

1975 GMC 6500, 366 Engine, 24ft body, good condition; 30ft. Trailer Flatbed, single axle 215/869-2474
 1978 GMC 6500, 366, 5+2 trans., 16' dump, excellent condition; 1967 Mack DM400, tandem, 435 diesel, 22' dump 201-876-4680

1979 Mack F-model, (less rears), 5speed, 300(?) engine \$2,400 OBO or will sell parts. (215)484-2254. Lancaster County.

1980 Ford 150 extended cab, 2-tone, 351, 4sp, P/S, P/B, AM/FM cassette, 105,000m, \$1,800 (215)445-6866.

1980 Int. 1854, S model, 466 diesel, 5&2, PS, 28,000 GVW; 1981 Int 1854, S model, 466 diesel, 5 spd, 28,000 GVW 301-877-9889

1984 F250 Ford pickup XLT, 6.9 diesel, loaded, \$7,500. Martin Hardware, Schaefferstown, Pa. 717-949-6817 or 949-2549

1985 Ford F250, HD, 6.9 diesel, 4 spd, air, excellent condition, new tires, \$8,000. 717-756-2968

1987 Big Valley, 14', with 4' dressing room, real nice \$2,595. 717-597-5611.

1988 Ford 9' stake body, 7,000 miles, excellent condition, \$8,000 OBO (717)386-4545.

1988 Ford F800, 20' grain dump, cab rack, P/S, air-brakes, A/C, AM/FM, 5+2, excellent condition 717/896-8766 Dauphin County

1989 Monarch gooseneck stock trailer, 7x16, 7' high, fully lined, like new, \$4,500 717-756-2968

1989 Ponderosa Gooseneck, like new, 8' dressing room with 2 or 3 horse hauling and pack area. 717-597-5611.

366 & 427 CHEVY TRUCK MOTORS, plus a special high performance 396 for street use. All of these motors professionally built. Call Tony for information and prices. 717-762-7940

3 Ford LN600's, 2 1974 models, 1 1972 model. Well maintained, low mileage, 14' flat beds. Call 717-334-6777 8 am to 5 pm ask for Dan.

'67 Int 1600 tilt cab, 21,000 GVW, 14' grain bed w/ front cylinder lift, fair condition, \$1,500. (717)284-2115

1973 Ford F-150 Pickup truck, \$300 OBO. 1973 18' International flatbed truck, \$1,000 OBO. Call after 6PM 717-792-4999.

1973 Ford Louisville truck, dump bed w/operating winch, 20' bed, great for hauling, \$5,500. (717)354-2613.

WANTED
 Rollback truck with
 22 to 26' body
609/265-1695



1984 INT. S 1724
 Cab & Chassis, 345 Gas, 5 Speed,
 PS, PB, 8.25x20 Tires, Disk Brakes,
 12'6" C.A. 78,000 Mi.
\$7,250
 Call Eves (609) 466-9317

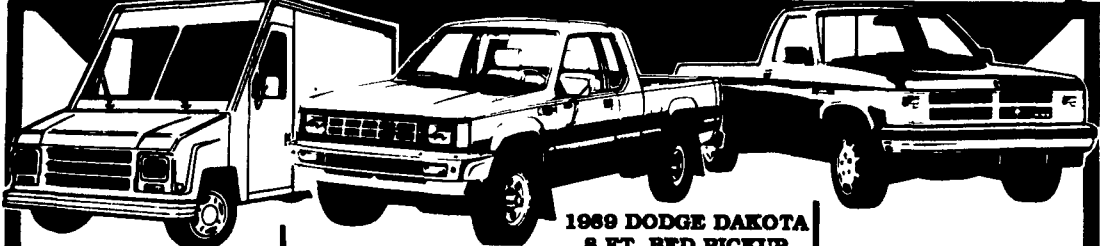


'69 White Compact, recently rebuilt V-6 Detroit, 10 spd. trans., Air Brakes, 30,000 GVW, 26' Flat Bed, New Tires, Batteries, Paint Job & Bed Floor. Excellent Hay or Christmas Tree Truck \$3200.
(717) 458-4515

RAM TOUGH TRUCK HEADQUARTERS

**DRIVE INTO OUR TRUCK
 CENTER TODAY & CHOOSE
 FROM OUR FINE SELECTION
 OF PICKUPS, 4x4's, VANS, MINI
 MOTOR HOMES & TRUCKS!**

**WINTER'S COMING!
 GET YOUR GO IN THE SNOW
 TRUCK AT LADD HANFORD'S
 TODAY!**



**1989 DODGE RAM 50
 EXTENDED CAB**
 2.6L eng., auto. trans., w/overdrive,
 p.s.b., am/fm stereo. Stk #7864
 Retail Price \$10,899
 FACTORY REBATE - 1,000
 LADD HANFORD DISCOUNT - 1,000
YOUR PRICE \$8,899

**1989 DODGE DAKOTA
 8 FT. BED**
 V6, auto. trans., p/s/b, SE decor,
 am/fm stereo, Stk #8019.
 Retail Price \$12,540
 FACTORY REBATE - 1,500
 LADD HANFORD DISCOUNT - 1,041
YOUR PRICE \$9,999

**1989 DODGE DAKOTA
 8 FT. BED PICKUP**
 V6, auto. trans., p/s/b, a/c, SE
 decor, sliding rear window, am/fm
 stereo cass., new demo, 5400
 miles Stk #7809
 Retail Price \$13,803
 FACTORY REBATE - 1,500
 LADD HANFORD DISCOUNT - 1,503
YOUR PRICE \$10,800

**1989 DODGE POWER
 RAM 50 4x4**
 2.5 L eng., 5 spd., p/s/b, am/fm
 stereo, extended cab. Stk #7688
 Retail Price \$13,142
 FACTORY REBATE - 1,000
 LADD HANFORD DISCOUNT - 1,192
YOUR PRICE \$10,950

**1989 DODGE W100
 4x4 PICKUP**
 318 V8, 4 spd., p/s/b, a/c &
 Much Much More! Stk #7628
 Retail Price \$16,014
 FACTORY REBATE - 2,000
 LADD HANFORD DISCOUNT - 1,714
YOUR PRICE \$12,300

**1989 DODGE
 W100 4x4**
 V8, auto. trans., p/s/b, a/c, &
 Much, Much More! Stk #7731
 Retail Price \$16,667
 FACTORY REBATE - 2,000
 LADD HANFORD DISCOUNT - 1,967
YOUR PRICE \$12,700

**1989 AEROMATE MINI
 WALK IN VAN**
 front whl. drive, auto. trans.,
 p/s/b, a/c, am/fm stereo cass.,
 bukhead w/door, new demo.
 7,700 mi. Stk #107
 Retail Price \$18,785
SALE PRICE \$15,900

**1989 DODGE W350
 DUMP TRUCK**
 4x4, 360 V8, 4-spd., p/s/b, am/fm
 stereo & Much Much More!
 Stk #7639
 Retail Price \$22,347
 FACTORY REBATE - 2,000
 LADD HANFORD DISCOUNT - 2,447
YOUR PRICE \$17,900

Tax and tags extra. Rebates apply where applicable.

WE CARE - WE'RE YOUR NEIGHBOR

LADD HANFORD

CHRYSLER • PLYMOUTH • DODGE • DODGE TRUCKS • IMPORTS

LOCALLY OWNED - LOCALLY OPERATED SINCE 1940 2596 W. Cumberland Street, Lebanon, PA (717) 273-4585 THE 1989 SERVICE PROFESSIONALS

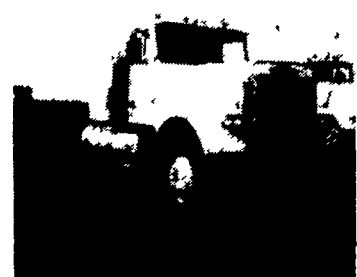





FOR SALE

3 - 1988 DODGE RAM LE350 VANS
 15 passenger, PS, AT, PW, A/C, Cruise control, tilt wheel. From 28,000 - 42,000 miles
 \$16,500 each
Days: 1-800-338-7989
Evenings: (717) 266-1934

1975 Wilson 44'x130', Hog Rail And Decking, 2 Rails In Nose, Dog-House In Rear, 24.5 Budd Wheels
TRANS EQUIPMENT, INC.
 717-859-2095

McDONNELL DOUGLAS TRUCK SERVICES INC.

Lancaster, PA • (717) 569-2648 • Ray Leed

 <p>1984 FREIGHTLINER, Tandem Axle Conv. Sleeper, NTC, 350, 9 Spd., P/S, A/C Spr Susp., 36" Slpr., Very Clean - Selling Price \$27,000</p>	 <p>85 KENWORTH K100, 350 NTC, 9 Spd., P/S, A/C, KW 8 Bag Air Ride susp., Very Clean, Selling Price \$25,500</p>	 <p>83 GMC ASTRO NTC 350, 9 Spd., P/S, A/C, Spr. Susp., Won't Last Long At \$11,900</p>
 <p>1984 MACK R-888ST, 350 Mack, 10 Spd., P/S, A/C, Camel Back Susp., Very Clean T/A R-Model Selling Price \$26,000</p>	 <p>80 GMC, 366 GM Gas, 5 Spd., P/S, 27,500 GVW, 16' Stake w/Lift Gate, Selling Price \$5,500</p>	 <p>85 FORD LN7000, 3208 Cat, 5 & 2 Spd., 28,000 GVW, 16' C&C, Reduced To \$13,000</p>

OTHER MAKES & MODELS TO CHOOSE FROM