

A Farm In Wolves' Clothing



The 13 acres of virgin hemlocks just across the road from the Oberlin home probably appear today much as they did in the 1790s when D. William Oberlin's great-great-grandfather hunted timber wolves there.

(Continued from Page B16)

pond, fed by seven springs, lined with white birch trees and decorated with lilies.

Across the township road from the homestead is what remains of the original hemlock forest along the banks of Leisure Run. The 13 acres of primordial trees are one of only three stands of virgin hemlocks remaining in Pennsylvania.

Ryen said one of the provisions of an early deed was that if this virgin forest was cut, the land was to revert to the Penn heirs.

With the Oberlin farm there are now 1,391 Century Farms in Pennsylvania, all designated since the program began during the state's Bicentennial celebration 1976.

To qualify as a Century Farm,

the land must have been owned by the same family for at least 100 consecutive years, a family member must currently live on the farm, and the farm must currently consist of at least 10 of the original acres or gross at least \$1,000 in farm produce each year.

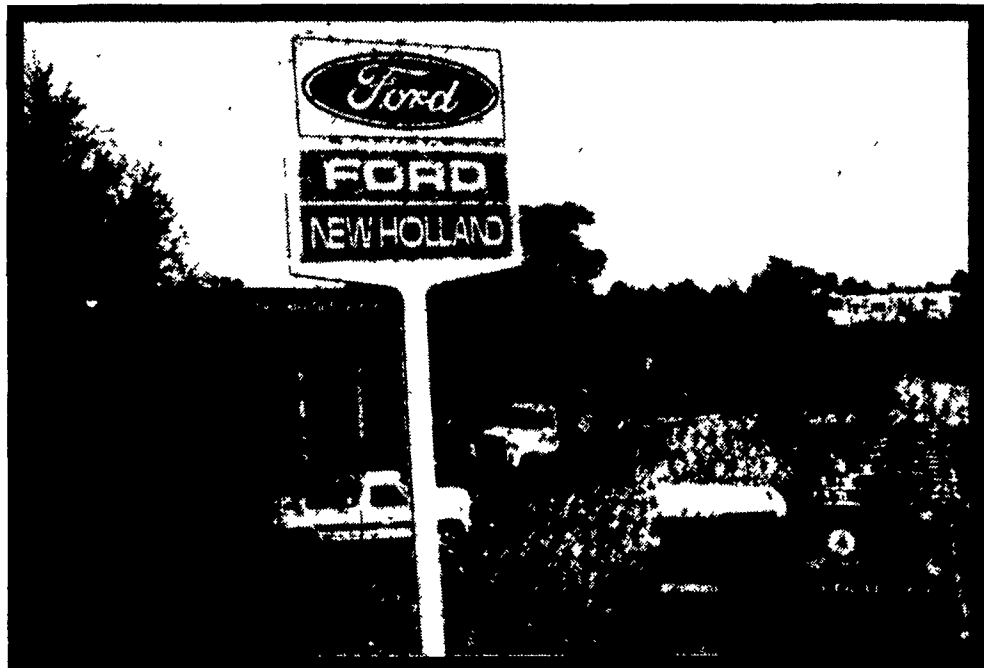
"Our farm families are the keystone of our state's economy," Secretary of Agriculture Boyd E. Wolf said in announcing the most recent recipients of the award.

"They work very hard to keep agriculture Pennsylvania's number one industry. The Century Farm Program allows us to recognize their dedication and honor them for their achievement."

According to a state Department of Agriculture spokesman, anyone who would like an application to apply for recognition as a Century Farm should call 1-800-AG PENNA.



Look To LANCASTER FORD TRACTOR UNDER THE SIGN OF QUALITY



FORD NEW HOLLAND FALL INCENTIVE PROGRAMS END NOVEMBER 30th!

FINANCE

0% For 24 Mos.*
1.9% For 12 Mos.
6.9% For 24 Mos.
8.9% For 36 Mos.
9.9% For 48 Mos.
10.9% For 60 Mos.

* Compact Diesels Only

OR

WAIVER OF
FINANCE
CHARGES
ON SOME
MODELS

TILL
JUNE 1, 1990

OR

PAY CASH
AND TAKE
ADVANTAGE
OF BIG
CASH REBATES

TRUCKLOAD SALE

4WD, Ag Or Turf Tires, Loaders,
Mowers And Other Attachments

Ford Compact
Diesel Tractors
And Skid Loaders
All Models
In Stock!



LANCASTER FORD
TRACTOR, INC.
The Counties Oldest &
Largest Ford Tractor
Dealer

1655 Rohrerstown Rd.
Lancaster, PA 17601
(717) 569-7063

BOWMAN'S STOVE SHOP

906 E. Main St., Ephrata, PA 17522
(717) 733-4973

Tues. & Wed. 10-6; Thurs. & Fri. 10-8; Sat. 10-4
Int. of Rtes. 322 & 222
Closed Mondays



CUSTOM
FIREPLACE
DOORS &
ACCESSORIES



GLIDE AND SHIFT, SAVE AND SAVE



2.75%
FINANCING
AVAILABLE!

For hard-working, time-saving operation on the job site, see the Kubota L2850GST.

Kubota's footwork-saving Glide Shift Transmission works for the operator during repetitive jobs like loading.

Still the only tractor you shift through all the gears - 8 forward and 8 reverse - without clutching. Eliminate gear clashing, and lengthen clutch and transmission life.

You work harder because high torque rise minimizes power loss.

Designed for efficient operation over a long life, this 29.5 HP diesel powered Kubota has power steering. Rear and mid PTO. Optional quick-attach implements.

For an economical tractor that saves you time, buy the Kubota L2850GST.



Nothing like it on earth.

DEMO UNIT...

L2550 GST w/Loader & Backhoe.....Excellent Buy!

USED KUBOTA'S IN STOCK

- (2) B8200, Hydro 4x4, w/Loader..... Ex. Cond.
- (1) 2850, 4x4, w/Loader..... 225 Hours
- (1) B7200, Hydro 4x4, w/Mower..... Very Good Cond.
- (1) R400 Articulating Loader & Backhoe..... 325 Hours

Full Line of Kubota Equipment Available At:

NICARRY EQUIPMENT CO.

RD #2, Box 2008, Reading, Pa. 19605 215-926-2441
Located: 4 Miles North of Reading On Rt. 61 - 3 Miles South of Leesport
Hours: Mon. thru Fri 8 to 5; Sat. 8 to 3