



HARVEST-TIME TIRE BARGAINS

QUALITY • SERVICE • DEPENDABILITY • ECONOMY

THE HARD-WORKING,
HARD PULLING TRACTOR
REAR
MULTI-ANGLE MB

- 15.5-38 6 Ply \$283.00** • Excellent drawbar pull with long-bar, short-bar lugs for improved traction
- 18.4-34 6 Ply \$370.00** • Designed for improved stability and roadability, plus reduced vibration
- 18.4-34 8 Ply \$410.00** • Strong angle-braced lugs have self-cleaning design
- 18.4-38 8 Ply \$466.00** • High-strength polyester cord body, and heavy duty rim shield protects tire from damage
- 20.8-38 8 Ply \$623.00**



Get the pull of your life with
MULTI-ANGLE RADIAL M.B

- Revolutionary 3-lug per pitch design improves traction and ride
- Computer designed "natural" shape casing improves tire body life
- Radial construction provides better traction, lower fuel and overall costs

- 18.4R34 ★ \$507.00**
- 18.4R38 ★ \$572.00**
- 18.4R42 ★★ \$681.00**
- 20.8R38 ★ \$795.00**
- 20.8R38 ★★ \$836.00**



**- Now You Can Buy
Safemark Tires At
Tremendous Savings**

**Contact A
Participating Dealer
Listed Below**
or
(Call 1-800-446-3543 for dealer nearest you.)

- Adams County**
Yingling's Implement
3291 Taneytown Rd.
Gettysburg, PA 17325
(717) 359-4848
- Franklin**
Byers Tire Service
3644 Warm Spring Rd.
Chambersburg, PA 17201
(717) 369-4327
- Armstrong**
Bowser Tire Center
R.D. #1 Box 114,
Cherry St. Exit
Worthington, PA 16262
(412) 297-3683
- Fitz & Stoneham**
5890 Buchanan
Trail East
Waynesboro, PA 17268
(717) 762-3614
- Bedford**
Ickes Farm Supply
R.D. #1 Box 417
Osterburg, PA 16667
(814) 276-3422
- Bruce B. Gamble & Sons**
P.O. Box 627
Concord, PA 17217
(717) 349-2670
- Berks**
Kantner's Tire Service, Inc.
230 S. Franklin St.
Shoemakersville, PA 19555
(215) 562-2567
- Fulton**
Clugston Farm Equipment
HCR 80, Box 22
Needmore, PA 17238
(717) 573-2215
- Blair**
James D. Kaurudar Equipment
R.D. #1 Box 103
Rt 867 South
Roaring Spring, PA 16673
(814) 224-4056
- Lancaster**
Leola Tire Service
258 W. Main St.
Leola, PA 17540
(717) 656-2574
- Rhode's Farm Supply**
RD 2, Box 219C
Williamsburg, PA 16693
(814) 832-2491
- Lebanon**
Lebanon Valley Implement Co., Inc.
705 E. Linden St.
Richland, PA 17087
(717) 866-7518
- Bradford/Sullivan**
Dacheux Service Center
R.D. #2 Box 216
Dushore, PA 18614
(717) 928-8400
- Miller-Lake, Inc.**
R.D. #2 Box 273A
Belleville, PA 17004
(717) 935-2335
- Pine Glen Farm Service**
R.D. #2 Box 166
Lewistown, PA 17044
(717) 899-7400
- Histand Farm & Home Service**
R.D. #1 Box 231
Rome, PA 18837
(717) 744-2371
- Northampton/Monroe**
Northampton Farm Bureau
300 Bushkill St.
Tatamy, PA 18085
(215) 759-3254
- Chester/Delaware**
J & L Tire Service
Rt 41 North
Chatham, PA 19318
(215) 869-0450
- Centre**
Dunkle & Grieb
R.D. #2 Box 14
Centre Hall, PA 16828
(814) 364-1421
- Northumberland**
Rovendale Supply
R.D. #2
Watsonstown, PA 17777
800-232-3253
- S.G. Lewis & Sons**
352 N. Jennersville Rd.
West Grove, PA 19390
(215) 869-2214
- Union**
Mifflinburg Farm Supply, Inc.
E. Chestnut St.
Mifflinburg, PA 17844
(717) 966-3114/3115
- Stoltzfus Farm Service**
Rt. 41 Box 99
Cochranville, PA 19330
(215) 593-2407/2408
- Washington**
Canonsburg Supply & Equipment Co., Inc.
R.D. #1 Box 247
Canonsburg, PA 15317
(412) 746-2500
- Clearfield**
Charlie's Tire & Service
RR #1 Box 655
Deer Creek Rd.
Morrisdale, PA 16858
(814) 342-0819
- Westmoreland**
J & M Machinery Company
R.D. #3 Box 147
Greensburg, PA 15601
(412) 668-7850/2276
- Dotterer Equipment, Inc.**
R.D. #3 Box 454
Mill Hall, PA 17751
(717) 726-3471
- York**
Scotty's Tire Service
R.D. #1
Blue Hill Rd.
Brodbecks, PA 17329
(717) 632-5971
- Cumberland**
Barrick Tire Sales
R.D. #4 Box 228
Newville, PA 17241
(717) 776-5762
- Dauphin**
Lyter & Deibler Tire Service
774 Tourist Park Rd.
Halifax, PA 17032
(717) 896-8477/3432
- Wilson Service Center**
R.D. #2
Stewartstown, PA 17363
(717) 993-2523/6101



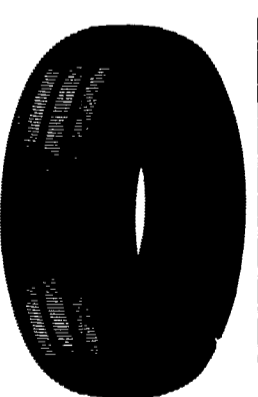
SUPER HYRID		
550-16	4 Ply TT	\$36.75
550-16	6 Ply TT	\$40.00
600-16	4 Ply TT	\$39.75
650-16	6 Ply TT	\$47.00
750-16	6 Ply TT	\$60.00
1000-16	8 Ply TT	\$88.00
1100-16	8 Ply TT	\$119.00

* Mfg. By Kelly Tires



UNIROYAL GOODRICH
WINTER TIRE TRACTION

Whitewall Size	Sale Price
P155/80R13	\$41.19
P165/80R13	\$42.86
P175/80R13	\$44.84
P185/80R13	\$47.02
P185/75R14	\$48.39
P195/75R14	\$50.61
P205/75R14	\$53.40
P205/75R15	\$54.82
P215/75R15	\$57.63
P225/75R15	\$60.46
P235/75R15	\$63.36



FARM UTILITY WAGON TIRES		
9.5L-15	6 Ply TT	\$47.75
9.5L-15	8 Ply TT	\$49.75
11L-15	6 Ply TT	\$50.00
11L-15	8 Ply TT	\$52.75
11L-16	8 Ply TT	\$65.00
12.5L-1510	Ply TT	\$80.00
12.5L-1612	Ply TT	\$107.00

* Mfg. By Kelly Tires



B/K TRACTION
BIAS LIGHT TRUCK TIRE

- All-terrain tread for 4-wheel drive vehicles
- Excellent grip in sand, mud and snow
- Continuous center rib gives slow, even wear
- Self-cleaning lug design
- Durable, long-wearing tread compound
- Available in 78 series, RV, wide base and conventional sizes



\$67 H78-15LT 6 Ply

Size	Price	Size	Price
700-14 6 Ply	\$50.06	31-10.50	
700-15 6 Ply	\$72.14	-15 4 Ply	\$84.25
800-16.5 8 Ply	\$71.33	950-16.5 8 Ply	\$91.20
L78-15 6 Ply	\$72.14	10-16.5 8 Ply	\$101.09
750-16 8 Ply	\$75.34	12-16.5 8 Ply	\$118.14
875-16.5 8 Ply	\$78.55		

BATTERY BARGAIN

\$45.00
5-26 515 AMPS

- Higher cranking than conventional batteries
- Sizes to fit most domestic and import cars and light trucks

FARM TRACTOR BATTERY

\$66.00
FC-30H 560 AMPS

- Rugged high impact case and cover for vibration resistance



- Increased starting power
- Built to last-season after season
- Made in the USA



- Dependable performance in all weather conditions
- Unique billboard vent appearance

SAFEMARK
Division of Pennsylvania Farmers' Assoc.
Camp Hill, PA 17011
CALL TOLL FREE
1-800-446-3543
For Dealer Nearest You

A Proud Tradition of Quality, Value and Service.

• QUALITY

• SERVICE

• DEPENDABILITY

• ECONOMY

SAFEMARK
Division of Pennsylvania Farmers' Association
Camp Hill, PA 17011