

**Union County DHIA
September, 1989
Rolling Herd Average**

Name	Brd.	No. Cows	% Days In Milk	Milk Lbs.	Fat Lbs.
Locust-Row-Farm	B3	60.2	92.1	20,274	827
Jacob S Stoltzfus	3	51.8	89.5	21,234	810
John F Stoltzfus	B3	53.5	90.1	21,344	779
Rapid Run Farm	3	37.8	87.5	20,293	772
Ridge Creek Farm	3	47.8	88.0	19,884	763
Kenneth Beiler	3	68.7	90.0	19,828	753
Amos M Stoltzfus	B3	45.3	87.3	20,243	752
Wilmer S Stoltzfus	B3	34.3	87.4	18,819	735
Leroy C Gotshall Jr	B3	55.8	88.1	21,410	730
Gene-Mar Farms	B3	78.2	90.2	19,223	724
Mifflin Hills Farm	3	54.5	86.5	20,572	722
Ivan B Martin	B3	41.5	86.7	20,357	717
Locust-Ridge Farm	B8	53.1	85.3	18,872	707

Elam Beiler	3	45.3	90.9	19,041	706
Jeffery J Vanhorn	B3	39.3	88.9	19,278	705
Popular-Vu-Farm	B3	31.7	88.4	19,513	701
Jonas Bender	B3	30.9	83.4	19,118	694
John K Stoltzfus	3	47.2	89.1	18,722	693
Melvin Z Musser	B3	39.1	89.5	19,954	692
Jonas R Zeiset	B3	52.1	88.8	19,181	688
Wilmer E Zook	B3	40.1	88.9	18,013	685
Dip N Hill Farm	B3	56.0	84.8	18,755	680
Steven R Sanders	B3	13.7	85.0	18,371	679
Kenlew Farms	B3	48.2	88.0	18,528	675
Joal-Ann Dairy	3	73.8	89.0	19,221	673
Mark A Mapes	B3	40.4	85.3	19,020	670
David Peachy	B3	44.5	86.7	19,170	670
Terry L Boob	B3	40.6	85.4	18,837	670
Ivan K Stoltzfus	3	42.7	83.0	18,606	660
Floyd W Martin	B3	38.1	84.5	18,122	659
Ron & Lina					

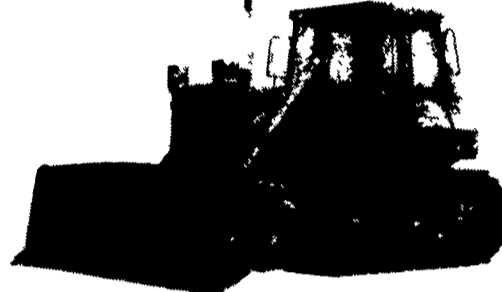
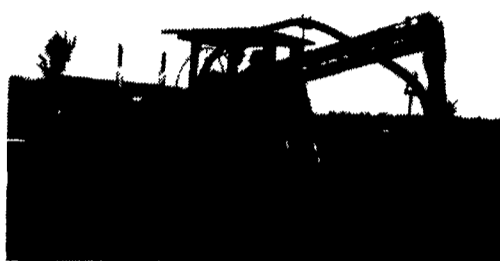
Hoffmann	B3	57.2	84.9	17,553	658
Ralph Dietrich & Son	B3	30.2	88.9	16,776	657
Aaron M Martin	B3	34.0	84.5	17,819	656
Zi-Wes Dairy Farm	3	48.1	90.8	17,947	655
Melvin K Stoltzfus	B3	57.3	85.0	18,216	652
Kerry + Janet Young	B3	23.3	83.2	17,618	650

**MILK
AMERICA'S HEALTH KICK™**

**Farm Drainage & Soil Conservation...
That's Us!**

**We Are Fully Equipped To
Install Tile With Laser
Beam Control**

**We Specialize In Soil
Conservation And Land
Improvement Work**



- Improved Land Use and Efficiency
- Better Soil Conservation
- Deeper Root Development
- Increased Crop Yield
- Longer Growing Seasons
- Improved Plant Quality
- Better Livestock Farming

**We're Equipped With:
Dozers, Pans And Excavators
To Handle Any Excavating Jobs,
Such As Terraces, Waterways,
Diversion, Ponds, Etc.**



COCALICO EQUIP. CO.

FARM DRAINAGE & EXCAVATING

RD#4, BOX 317, DENVER, PA. 17517 PH: 215-267-3808
717-738-3794

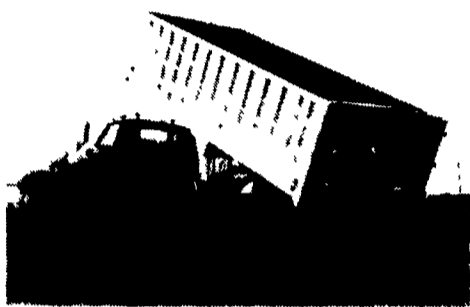


**ALUMINUM GRAIN BODIES
& ALUMINUM REPAIRS by**



*Rugged
Strength*

*Dependable
Performance*



These ultra-light bodies are designed for strength through engineering, not strength with bulk. For example a 16' grain body with tailgate and 48" sides weighs only 1490 lbs. complete. We'll build you any length or any side height up to 60"

Also available

- ★ Double swinging hay hauling tailgate
- ★ Barn door type tailgate
- ★ Slide out cattle chutes
- ★ Diamond Flooring
- ★ Pull out panel tailgates
- ★ Any size grain chute

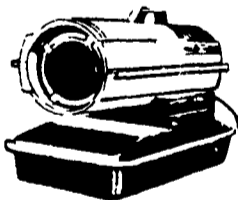
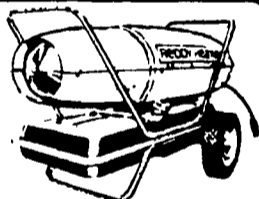
HEWEY WELDING

Box 2312, RD 4 Lebanon, PA 17042
(717) 867-5222

Fall

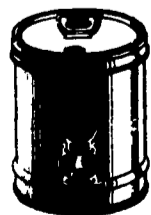
Specials

October Prices
Extended Thru
November

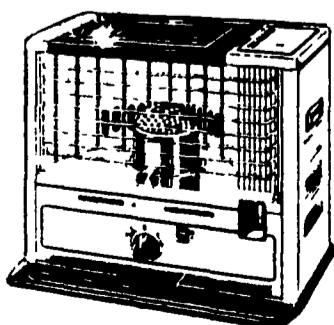


**REDDY
HEATER**

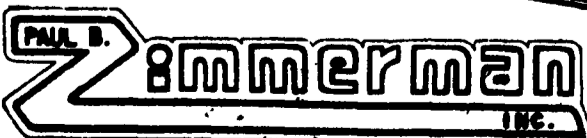
	Reg. Price	SALE PRICE
• R35.....	35,000 BTU Kerosene.....\$174.00	\$149.00
• R50.....	50,000 BTU Kerosene.....\$215.00	\$185.00
• R70.....	70,000 BTU Kerosene.....\$268.00	\$229.00
• R100.....	100,000 BTU Kerosene.....\$319.00	\$269.00
• R150.....	150,000 BTU Kerosene.....\$395.00	\$339.00
• RCP250.....	25,000 BTU LP Gas.....\$139.00	\$119.00
• KR10.....	10,500 BTU Kerosene.....\$144.00	\$124.00
• C22600.....	22,600 BTU Kerosene.....\$175.00	\$159.00



**We
Sell
Kerosene**



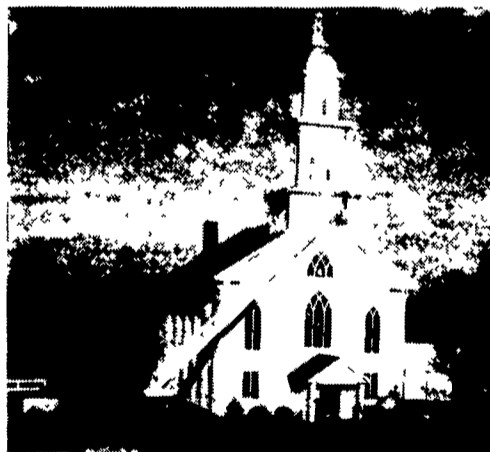
CLOSED THANKSGIVING
NOV. 23



295 WOODGORNER RD. • LITITZ, PA 17543
Phone (717) 738-1121

**TRUST
WORTHY
HARDWARE
DISTRIBUTORS**

**For A Professional Job: CALL ON THE
PAINTING & WATERPROOFING
SPECIALISTS**



**We Are
The
Fussy
One's**

Let Seal-Crete Dress Up Your Church In Its "Sunday Best"

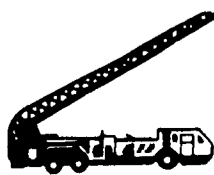
We Specialize In:

- Steeple Painting • Masonry Coating • Roof Coating
- Clear & Colored Water Proofing
- Masonry Cleaning & Restoration
- Sandblasting & Pressure Washing • Concrete Repairs
- INTERIOR & EXTERIOR

Don't Forget To Call On Us For Your Other Painting & Waterproofing Needs.

AGRICULTURE - COMMERCIAL - INDUSTRIAL - CHURCHES

For FREE Estimate CALL



Seal Crete Inc.

PAINTING & WATERPROOFING
RD 2, Box 417, Ephrata, PA 17522 • 717-859-1127