

# Angus Prices Advance To Another Record High

ST. JOSEPH, MO — Prices paid for registered Angus cattle hit a record high during the 1989 American Angus Association fiscal year as all other major Angus business indicators also made sizable increases over 1988, reports Richard L. Spader, Association executive vice president.

For the fiscal year ended September 30, the price of 12,652 Angus bulls sold at auction in 1989 averaged \$2,069 up from the 1988 record of \$1,940. Registered females brought \$1,713, compared with \$1,678 a year earlier.

Registrations of Angus cattle during the year totaled 156,697 head, up 9 percent from last year, and the third consecutive yearly increase. Transfers, which generally represent sales, totaled 94,628 head, an increase of just under 10 percent. More new Angus herds were started during the year as 1,730 cattle producers were issued new regular memberships an increase of 7 percent. In addition 933 new junior memberships were issued, up 5 percent from 1988.

Some of the biggest increases came in the Association's Angus

Herd Improvement Records (AHIR program). During the year Association members processed 297,249 birth, weaning and yearling weights through the program, a nearly 14 percent increase. Since 1962 there have been some 3.3 million weights processed through the AHIR program, providing one of the largest data bases in the beef cattle industry.

Demand for Angus cattle was boosted by the expanding Certified Angus Beef (CAB) program.

During the 1989 fiscal year an estimated 71 million pounds of CAB were sold at over 6,000

restaurants and more than 600 retail meat markets, an 11 percent increase. That is enough CAB to

provide each U.S. citizen with a 4.5 ounce portion of CAB.

## Last Chicago Beef Packer Packs It In

Lincoln Meat Company, the last beef slaughterer in Chicago, has closed. As a result, small feeder operations in a six-state area are finding it less profitable to market heifers.

Lincoln killed approximately 1,400 well-finished, medium-

frame heifers each week before it closed early last month.

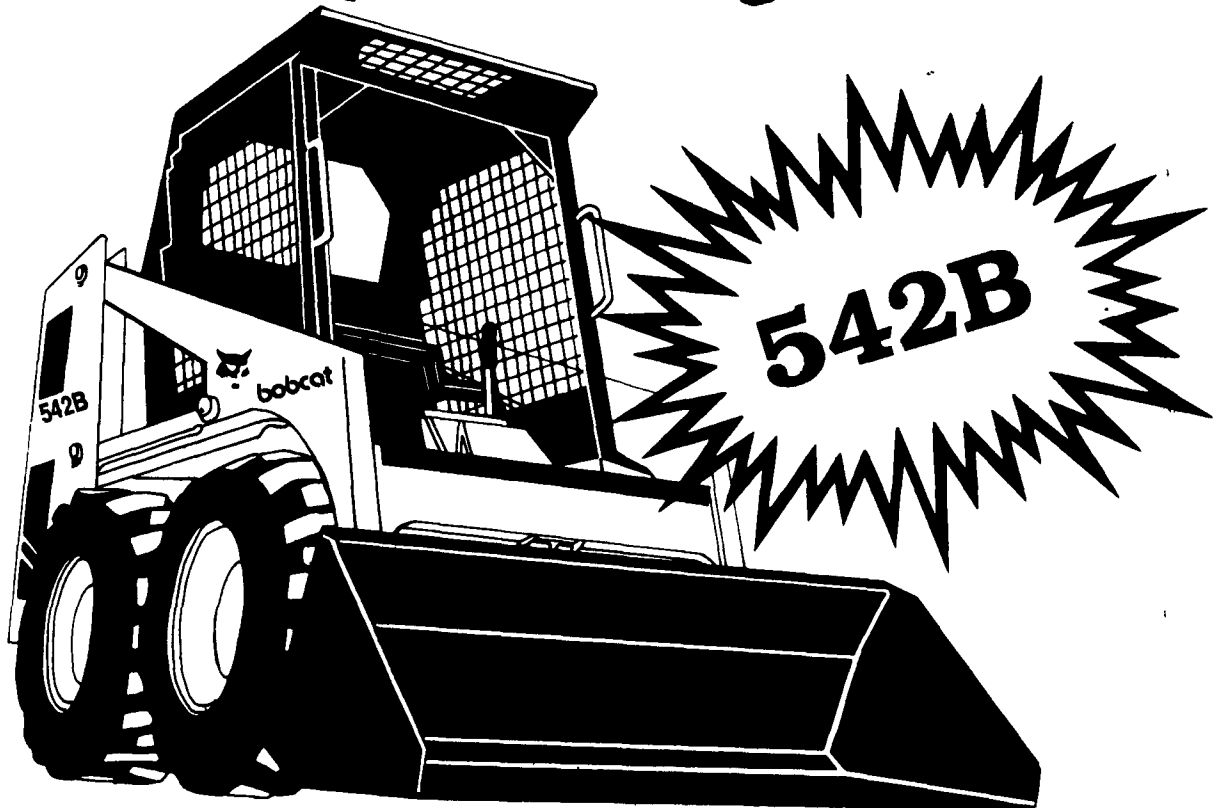
Lincoln closed when company owner Walter Mander pled guilty last year to making an illegal payment of \$200 to a USDA grader in January, 1984.

The prosecution never alleged

payments were to influence the grader to upgrade meat. Mander's attorney said payments were to prevent delays in grading. But USDA policy says anyone guilty of bribery can not be in the business.

*Reprinted from the November 2 issue of "Drovers Journal."*

# Carry the load on your jobsite without overloading your budget.



### Introducing the 542B Bobcat loader.

A hardworking machine designed to carry the load on your jobsite without overloading your budget... whether your jobs require handling bulk or bagged material, trenching, backhoeing, post hole digging, or more.

The 542B Bobcat is built to take on a full day's workload. And its compact frame allows you the versatility to work in tight corners and under low overhangs. The 542B features a powerful liquid-cooled gasoline engine and 800 lbs. rated operating capacity. It features

the exclusive Bobcat Bob-Tach system, along with a wide range of optional attachments for quick and easy attachment changes.

This Bobcat is built with the same tradition of quality design and workmanship found in all Melroe Bobcat skid-steer loaders. And backed by a nationwide dealer network for parts and service reliability that's second to none.

If you're looking for high performance, versatility and reliability without overloading your budget, stop in and see us about the new 542B Bobcat.

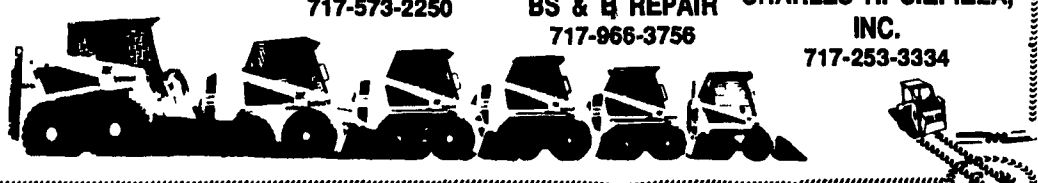
LOW RATES From Bobcat			
12 Months	24 Months	36 Months	Quality work - we're in it together!
7.9%	7.9%	9.9%	



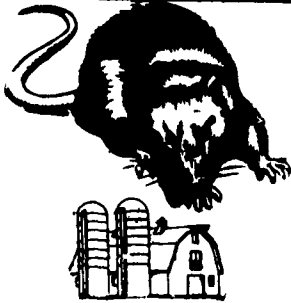
### bobcat DEALERS

Selected by Fortune Magazine as one of America's top 100 products

- |   |   |  |  |  |
|---|---|--|--|--|
| <b>Carlisle, PA</b><br>PETERMAN FARM EQUIPMENT<br>717-249-5338          | <b>Tunkhannock, PA</b><br>BARTRON FARM SUPPLY, INC.<br>717-836-4011 | <b>Martinsburg, PA</b><br>BURCHFIELD'S INC.<br>814-793-2194    | <b>Chambersburg, PA</b><br>CLUGSTON IMPLEMENT INC.<br>717-263-4103 | <b>West Lawn, PA</b><br>CLARKLIFT SERVICES<br>215-670-2950           |
| <b>Halfield, PA</b><br>LCL CONSTRUCTION EQUIP. SALE CO.<br>215-362-2510 | <b>Hanover, PA</b><br>SHEETS BROS., INC.<br>717-632-3660            | <b>Mill Hall, PA</b><br>DUNKLE & GRIEB<br>717-726-3115         | <b>Quarryville, PA</b><br>GRUMELLI'S FARM SERV.<br>717-786-7318    | <b>Honey Grove, PA</b><br>NORMAN D. CLARK & SON INC.<br>717-734-3682 |
| <b>Wilmington, DE</b><br>302-998-0128                                   | <b>Towanda, PA</b><br>S.P.E. INC.<br>717-265-4440                   | <b>Needmore, PA</b><br>CLUGSTON FARM EQUIPMENT<br>717-573-2250 | <b>Millinburg, PA</b><br>BS & B REPAIR<br>717-966-3756             | <b>Honesdale, PA</b><br>CHARLES H. SIEPIELA, INC.<br>717-253-3334    |
| <b>Lebanon</b><br>EVERGREEN TRACTOR CO.<br>717-272-4641                 |   |  |  |  |



**ATTENTION FARMERS... FREE ESTIMATES ON RODENT CONTROL**



RODENTS carry diseases which can endanger the health of your poultry flocks. Your business is raising them. Ours is protecting them.

**We Specialize In Sanitizing And Disinfecting Poultry Houses**

**Fhrlich**

Since 1928

Pest control is too important to trust to anyone else

Lancaster, PA 397-3721

Lewistown, PA 248-0983

State College, PA 237-7607

# afs

*"We not only give you what we have; but also what you want."*

**SPECIALIZING IN:**

- Grain Drying
- Handling
- Storage
- Milling Equipment

At 606 E. Evergreen Rd.  
Lebanon, PA 17042  
(717) 274-5333