

# Regional Poultry Meeting To Focus On Salmonella

NEWARK, DE — The regional Practical Poultry Biosecurity meeting of the Mid-Atlantic Cooperative Extension Poultry Health and Management Unit will be held on Monday, December 11, from 8:30 a.m. to 3:45 p.m., in room 125 Clayton Hall on the campus of the University of Delaware in Newark. The meeting is sponsored by the Cooperative Extension of the University of

Delaware, Cornell University, the University of Maryland, Rutgers, Pennsylvania State University, Virginia Tech and West Virginia University. USDA and the Departments of Agriculture of Delaware, New Jersey and Maryland are also sponsors.

This year's topic is "Salmonella: Risk/Benefits, Welfare Issues and Training Aids." Sessions will include "Is Our Approach to Sal-

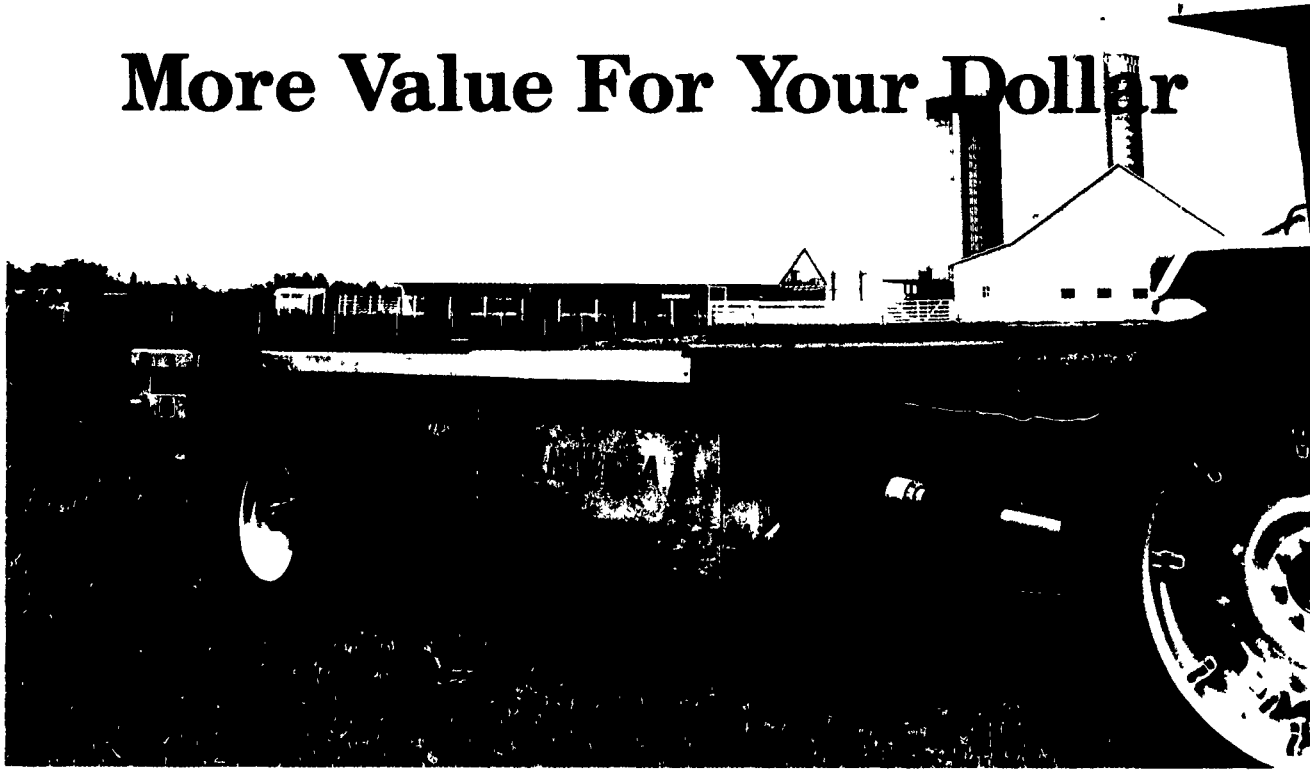
monella Enteritidis Rational?"; "Live Market Update"; "Vehicles of Disease Transmission"; "Making Biosecurity Work"; "Economics of Everyday Disease Prevention"; "Psychological Factors Affecting Change"; and "Animal Welfare Issues for Today." The program will also include an introduction to and preview of biosecurity instructional videotapes. Preregistration (before Novem-

ber 27) is \$30; late registration (after November 27) is \$35. Preregistration includes lunch. Lunch for late registrants will depend on cancellations. Programs of the Delaware Cooperative Extension System are open to everyone regardless of race, color, sex, handicap, age or national origin. To register send a check payable to Delmarva Poultry Industry to Dan Palmer, Poultry Ext. Special-

ist, College of Agricultural Sciences, Research and Education Center, RD #2, Box 48, Georgetown, DE 19947. There will be late registration at the conference from 7:45 a.m. to 8:30 a.m.



## More Value For Your Dollar



The 3600 Series Manure Spreader: available in 90, 150, 180, 220, 260, 320, 390 bushel capacities.

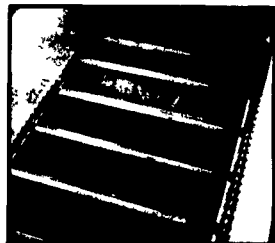
### Step up in size at a down to earth price.

You can own the New Idea Model 3626 Manure Spreader with 260 bushels of capacity. It's one of seven models we offer in our 3600 Series Manure Spreader line. And it's proof that when you compare quality and features to price, New Idea comes out ahead by offering the most for each dollar you spend.

### Consider the features:

- 1-piece copper bearing steel sides with culvert grade galvanizing for greater strength and durability.

- Long lasting, durable Clad-Tuff™ super slick floor with smooth fiberglass bonded to wood for freeze resistance and easier movement of



Culvert Grade Galvanized Box With Clad-Tuff™ Super Slick Floor

the material to the beater.

- Constant velocity PTO joints for smoother, chatter-free operation. The New Idea 3600 Series Manure Spreaders are built to do the job...and we back them with a full warranty, including ten year parts and labor coverage on the floor and sides. Financing programs are available through Allied Products Financial Services Corporation. To increase your dollar's value, visit your New Idea dealer today. Or call 1-800-543-9598. In Ohio, call collect 1-513-228-0103 and ask for operator 299.



WHITE-NEW IDEA FARM EQUIPMENT COMPANY  
123 West Sycamore Street  
Coldwater Ohio 45828

Division of ALLIED PRODUCTS CORPORATION

## SEE YOUR NEW IDEA DEALER TODAY

### PENNSYLVANIA

**Airville**  
FARMERS EQ. & SUPPLY CO., INC.  
717-862-3967 or 3968

**Bechtelsville**  
MILLER EQUIPMENT  
215-845-2911

**Bellefonte**  
IVAN J. ZOOK & SONS, INC.  
717-935-2948

**Bethel**  
ZIMMERMAN'S FARM SERVICE  
717-933-4114

**Cochranville**  
STOLTZFUS FARM SERVICE  
215-593-2407

**Cresson**  
HINES EQUIPMENT  
814-886-4183  
**Bellwood**  
814-742-8171

**Dover**  
GEORGE N. GROSS, INC.  
717-292-1673

**Easton**  
FANCY FURROW FARMS AG. EQ.  
215-252-8828

**Ephrata**  
ROY H. BUCH, INC.  
RD 2  
717-859-2441

**Everett**  
SOLLENBERGER EQUIPMENT,  
INC.  
814-652-5223

**Gettysburg**  
YINGLING'S IMPLEMENTS  
717-359-4848

**Greencastle**  
MEYERS IMPLEMENTS, INC.  
717-597-2176

**Honesdale**  
MARSHALL MACHINERY, INC.  
717-729-7117

**Jersey Shore**  
THOMAS L. DUNLAP  
717-398-1391

**Jerseytown**  
WILLIAM F. WELLIVER  
717-437-2430

**Kittanning**  
W.C. CRYTZER EQUIP., INC.  
412-543-2441

**Klingerstown**  
STANLEY'S FARM SERVICE  
717-648-2088

**Lebanon (Fontana)**  
UMBERGER'S OF FONTANA  
RD 4  
717-867-5161

**Maxatawny**  
N.H. FLICKER & SONS, INC.  
215-683-7252

**Mifflinburg**  
BS & B REPAIR  
717-966-3756

**Mill Hill**  
DUNKLE AND GRIEB  
717-726-3115

**New Holland**  
A.B.C. GROFF, INC.  
717-354-4191

**Oakland Mills**  
PEOPLES SALES & SERVICE, INC.  
717-463-2735

**Quakertown**  
C.J. WONSIDLER BROS.  
215-536-1935

**Quarryville**  
A.L. HERR & BRO.  
717-786-3521

**Somerset**  
LINCOLN SUPPLY &  
EQUIPMENT CO.  
814-629-5621

**Spring Mills**  
RT. 45 SALES  
& SERVICE  
RD 1  
814-422-8805

**Tunkhannock**  
ACE- JURISTA, INC.  
717-836-2610

### MARYLAND

**Churchville**  
WALTER G. COALE, INC.  
301-734-7722  
301-879-1434

**Frederick**  
KNOTT & GEISBERT, INC.  
RD 2  
301-662-3800

**Hagerstown**  
ANTIETAM FORD TRACTOR  
301-791-1200

**Lineboro**  
WERTZ GARAGE, INC.  
301-374-2672

**Rising Sun**  
BIGGS, INC.  
301-658-5531

### NEW JERSEY

**Bridgeton**  
LESLIE FOGG INC.  
609-935-5145

**Columbus**  
REED BROS. EQUIPMENT  
609-267-3363