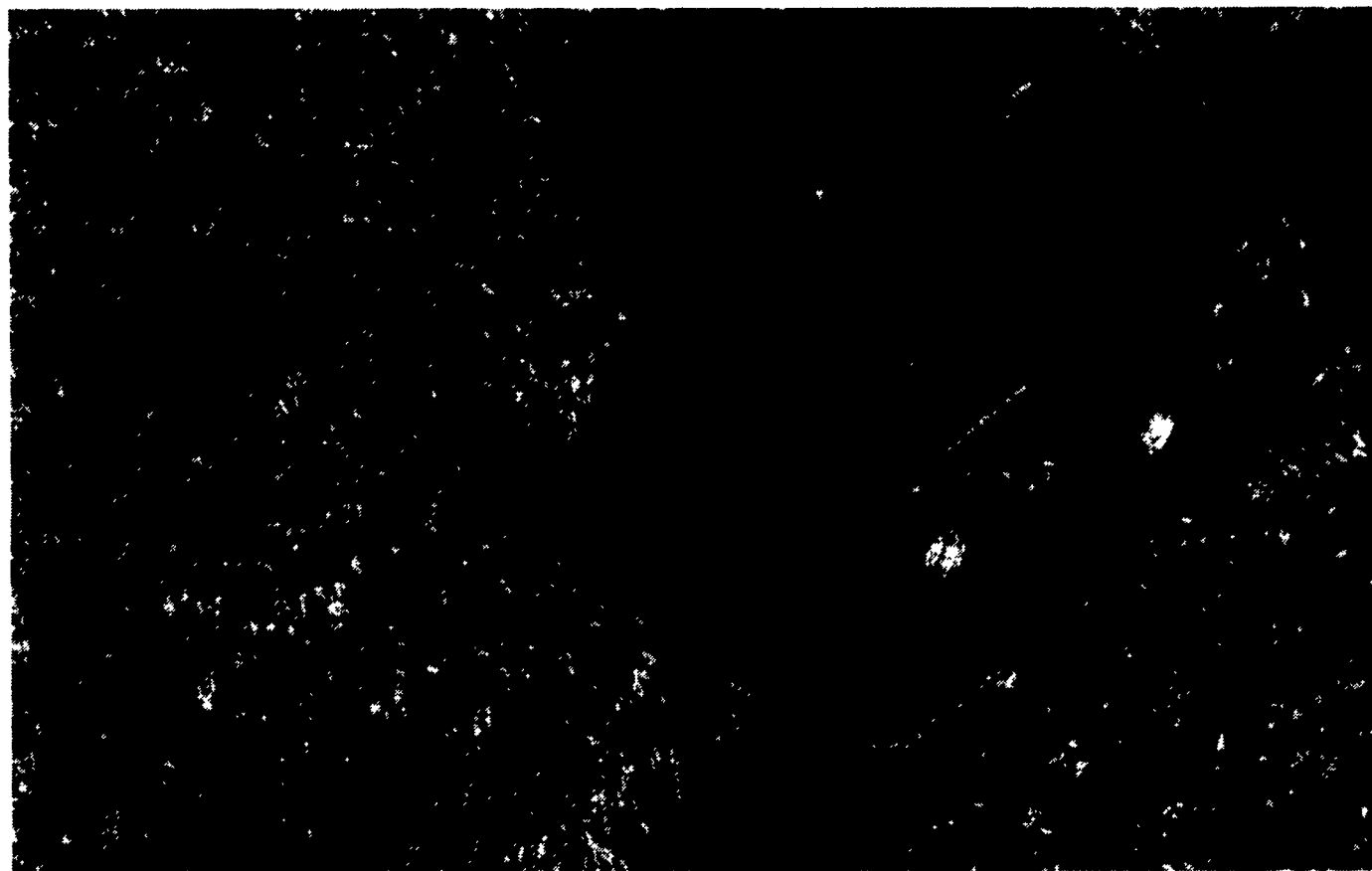


THE BRAGGING STOPS. IN THE FIELD



Axial-Flow Combines Are Simply More Productive

Over the past twelve years the Case IH *axial-flow* combines have proven themselves to be more productive than the combines previously owned by our customers. In tall crops, short crops or down crops; bumper crops or drought crops the *axial-flow* combines put more crop in the bin and, therefore, return more market dollars to you. The Case IH *axial-flow* is simply more productive in the field where the bragging stops.

HOOBER:

Axial-Flow **production specialists**

1. Every new combine Hooper sells is expertly predelivered and started in the field by a professional combine mechanic; experienced in setting and adjusting for all common crops.
2. Hooper's professional combine mechanics drive fully equipped combine service trucks, stocked with commonly used wearing parts. When called to service or repair an *axial-flow* combine, they carry with them the tools and equipment to do the job and get you back to the field fast.
3. Hooper's Parts Department has the largest combine parts inventory in the East. Daily pick-ups at the Case IH Parts depot help to provide fast emergency parts availability. Hooper's expert combine PARTS service provides you minimum downtime and maximum productivity.

INCREASE YOUR HARVEST PRODUCTIVITY WITH A
 **AXIAL-FLOW COMBINE FROM**
C.B. HOOBER & SON, INC.

All New & Used Products
Backed By Hooper
Parts & Service

(717) 768-8231

HOOBER

C.B. HOOBER & SON INC.

INTERCOURSE, PA



