

NEW
Challenger 1800 plastic mulch lifter, by Rainbow Irrigation. Now a mulch lifter the small farmer can afford. List Price \$875. This plastic lifter will challenge all other lifters. For more information call

215-445-6976

USED TRACTOR & COMBINE PARTS

Large Selection
Save 50%

W.C. Littleton & Son Inc.
P.O. Box 169
Laurel, DE 19956
302-875-7445

1 FARM EQUIPMENT

New JD 755, MFWD/loader...\$10,995
New JD 770, MFWD.....\$10,100
New JD 855, MFWD.....\$10,500
Used JD 850 tractor/mower/
front blade.....\$7,995
New JD 316/46 mower.....\$4,765
Stanley A. Klopp Inc.
215-488-1510

JD 4020
Synchro
\$5,900 OBO
Belmont Farm
301-833-9091



FORD 2810 4WD
w/QT Loader, 300 Hrs.
\$13,000

Also Available: Ford 6610, 4 WD,
very good condition, new rubber
\$12,500

Belmont Farm
301-833-9091

Best Buys in Used Equipment

TRACTORS & LOADERS

Case 580D Loader Backhoe
MF 30B Tractor Loader
Case 1845 Unloader w/Backhoe
Case 1845 Diesel Unloader

IMPLEMENTS

Gehl FB99 Forage Blower
Martin 2100 Vanguard Spreader
J.D. 660 Bar Rake
Oliver 242 Disk Harrow 10'
Lely 7' Disk Mower 3 Pt.
Knight Little Auggie Mixer Feeder
D130 Backhoe Fits Skid Loader
Case Garden Tractors
NH #8 Forage Box (No Roof)
Beck 5 Ton Utility Trailer
Badger Forage Box w/Roof
New Idea 279 Cut-Ditioner
Hesston 10' Hydraswing Mower
Woods-Belly Mower

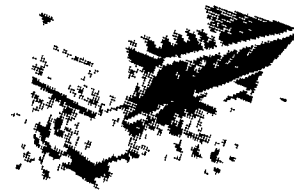
A.L. HERR & BRO.
Park Ave., Quarryville, PA 17566
(717) 786-3521
We Ship Parts U.P.S.



Are You Putting Your Dollars Where The Steel Is?

LUCKNOW TMR MIXER

Heavy Duty Primary Drive System w/ Heavy Duty 100 & 140 Standard Sized Chains, Designed For Easy Maintenance.



Standard Discharge Carries Approximately 18" Past Wheel Hydraulic Driven w/Double Unloading Auger.

The Most Durable And Heaviest Built Mixer Available Today

REBUILDING TMR MIXER WAGONS

For Pricing, Parts and Service

Call **YOUR FARM NEEDS, INC.**
Robert M. Vanderbosch - Robert J. Barber
Ohio, N.Y. • 716-257-9775

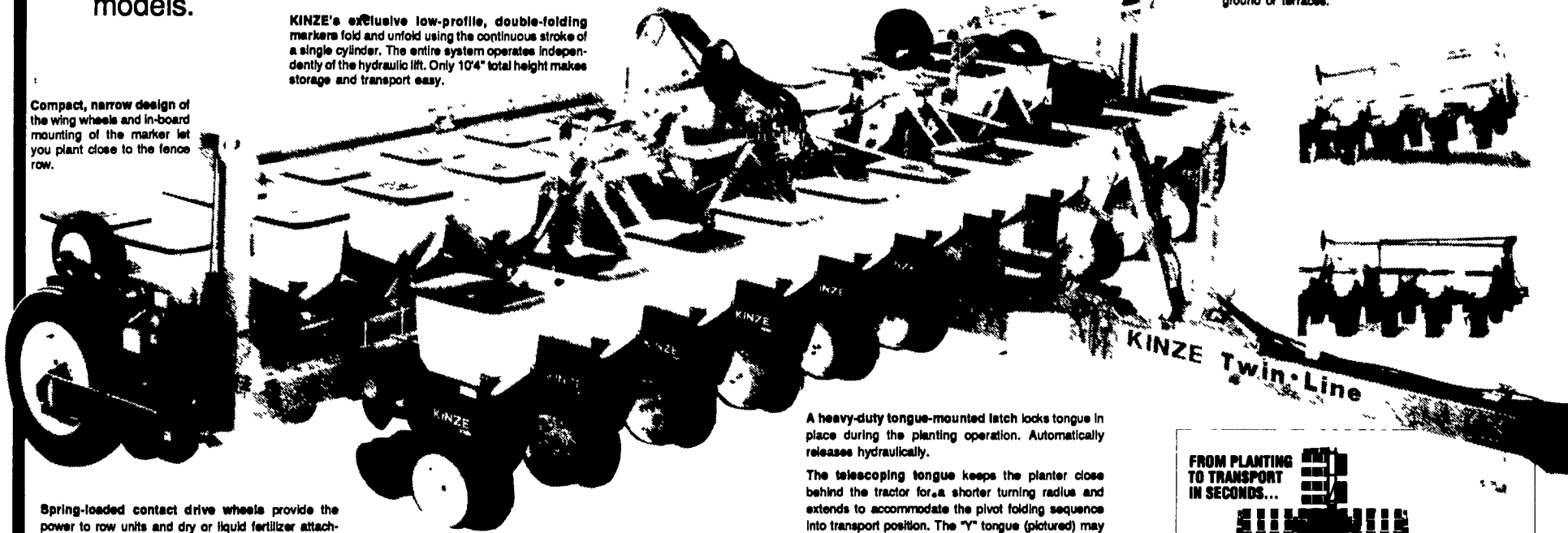
HANDLING EATON ELECTRONIC SCALES
PLATFORM SCALES
USED MIXERS ALSO AVAILABLE

KINZE BEST PRICES OF THE 1989-90 SEASON NOW!!

Meet the big, hydraulic folding planter with all the extras. Planting to transport in seconds. Fertilizer options. No-till options. Narrow row options. Plus, out-standing ridge-till capability. In 8-, 12- or 16-row models.

KINZE's exclusive low-profile, double-folding markers fold and unfold using the continuous stroke of a single cylinder. The entire system operates independently of the hydraulic lift. Only 10'4" total height makes storage and transport easy.

Compact, narrow design of the wing wheels and in-board mounting of the marker let you plant close to the fence row.



Wings flex for uneven terrain. Hydraulic cam locks allow the wings to flex in the field, lock rigid for transport. Each wing on all models can flex 8° up or down. Great for rolling ground or terraces.

Spring-loaded contact drive wheels provide the power to row units and dry or liquid fertilizer attachments through easy-access end-mounted transmissions. A heavy-duty 7/8" drive shaft and No. 40 roller chain tie the entire system together. Extra precision-cut plated sprockets give you more combinations than ever before. And rates are easy to change...no tools required. Clean, simple design. Easy to operate. Easy to maintain.

Out-board mounted wing lift/drive wheels eliminate an extra wheel track in the field. Help gauge row spacing...without increasing the overall width of the planter. Compare!

With twin tool bars and patented KINZE push units, you can set your row spacings down to 15", 18", 19" or set it up for liquid or dry fertilizer attachments

Master slave lift system. Trouble-free design.

Precision Placement! You want early seed germination. KINZE "Precision Placement" Row Units deliver...with the finest technology in the field for seed-to-soil contact. Spring-loaded parallel arm suspension gives you all the flexibility you need. Each unit is independently adjustable. Double disc openers and V-closing wheels create the perfect environment for early seed germination. Precision placement. Every time. Rugged, molded fiberglass seed boxes carry up to 1.8 bushels of seed. Also available with a 70 lb. capacity insecticide hopper...or a combination herbicide/insecticide hopper with center-mounted aluminum plate divider.

A heavy-duty tongue-mounted latch locks tongue in place during the planting operation. Automatically releases hydraulically.

The telescoping tongue keeps the planter close behind the tractor for a shorter turning radius and extends to accommodate the pivot folding sequence into transport position. The "Y" tongue (pictured) may be used to equip your Twin-Line II with interplant push units, or dry or liquid fertilizer attachments. An optional narrow "T" tongue may be used for fertilizer in special applications.

A transport latch post, mounted on the front of the tongue, supports and locks the planter in place during transport.

Plenty of ground clearance. Positive balance also keeps weight on the hitch in both planting and transport.

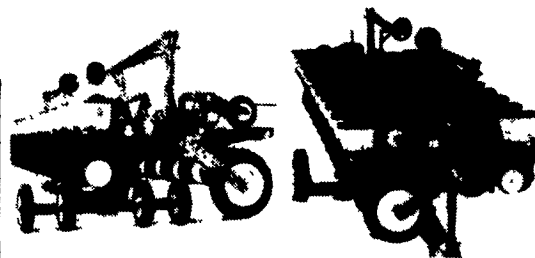
Outstanding transport stability in a big capacity planter! Transport widths as narrow as 11'2"...depending on row widths and equipment used. Transport wheels track on the same line as your tractor duals.

FROM PLANTING TO TRANSPORT IN SECONDS...



It's easy! Hydraulic/electric controls let you lock the wings rigid, extend the telescoping tongue, raise the planter frame to transport height, and rotate the planter into transport position.

CENTER PIVOT LIFT ROTATE TRANSPORT



REMOTE CONTROLS

Control console switches let you activate the marker assemblies, the point row clutch controls and the folding sequence for transport/planting positions. (Three remote dual hydraulic outlets required. Clutch control optional on 8-rows.)
Point row clutches let you shut off either half of the planter. (Optional on 8-rows)



HEAVY DUTY FRAME MOUNTED NO-TILL COULTERS ARE AVAILABLE FOR SPRING

BINKLEY & HURST BROS. INC.

SALES PARTS SERVICE

133 Rothsville Station Rd.

Lititz, PA 17543

Located 1/2 Mile North of Rothsville

(717) 626-4705

Hours

Mon-Fri 7 AM - 5 PM

Sat 8 AM - 11:30 AM

Sun Closed - Ford Day

After 5 PM

EMERGENCY PARTS DEPT. (717) 626-0888 (717) 933-4753 (717) 859-8768



Now Is The Time To Order Your New Kinze Planter From 4 Row To 12 Row