

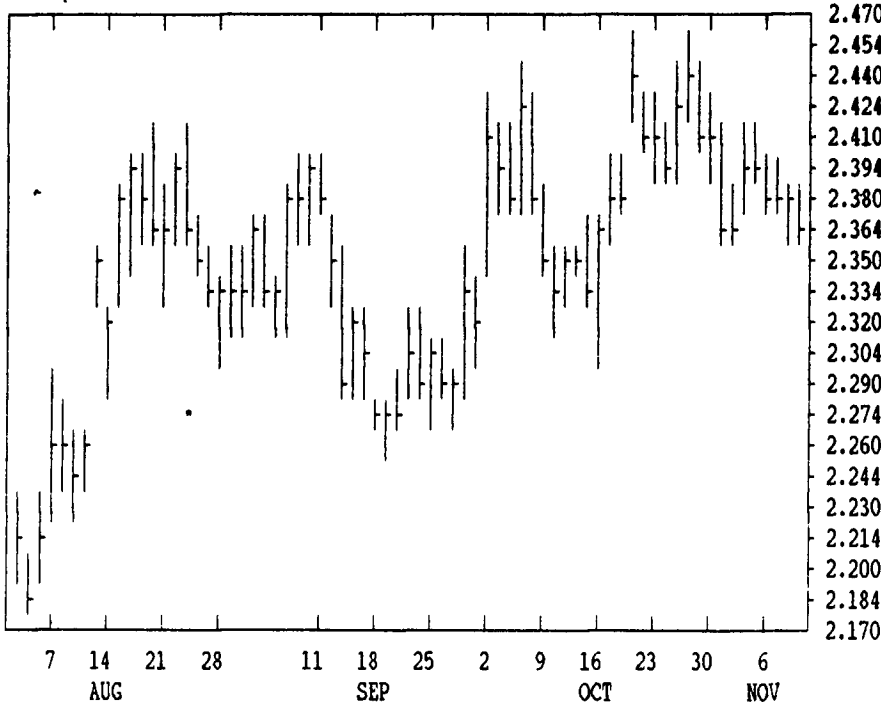
GRAIN, CATTLE AND HOG FUTURES MARKETS

From DTN farmer satellite daily update. Service phone: (717) 691-7009.

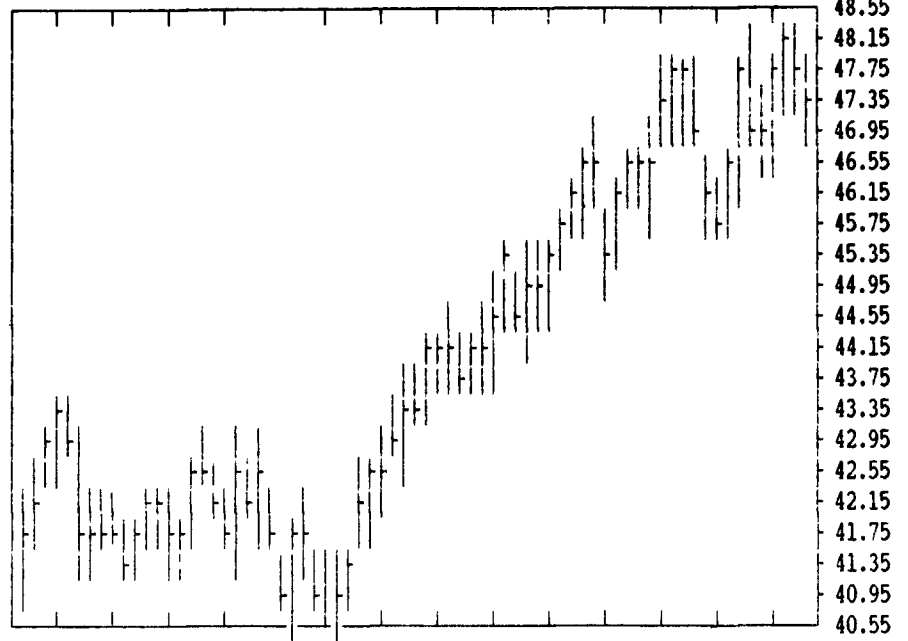
(Closing bids: Thursday, November 9)

LIVE CATTLE				FEEDER CATTLE				LIVE HOGS						
	HIGH	LOW	LAST	CHG		HIGH	LOW	LAST	CHG		HIGH	LOW	LAST	CHG
DEC	7495	7455	7482*	+15	NOV	8320	8295	8317*	+5	DEC	4775	4722	4752*	-28
FEB	7467	7415	7455*	+13	JAN	8275	8227	8267*	+15	FEB	4795	4735	4770*	-15
APR	7470	7420	7455*	+15	MAR	8125	8075	8125*	+38	APR	4482	4435	4467*	-10
JUN	7172	7130	7165*	+20	APR	8030	7975	8030*	+43	JUN	4875	4835	4870*	-12
AUG	7000	6950	6990*	+35	MAY	7970	7915	7960*	+40	JUL	4895	4850	4885*	-22

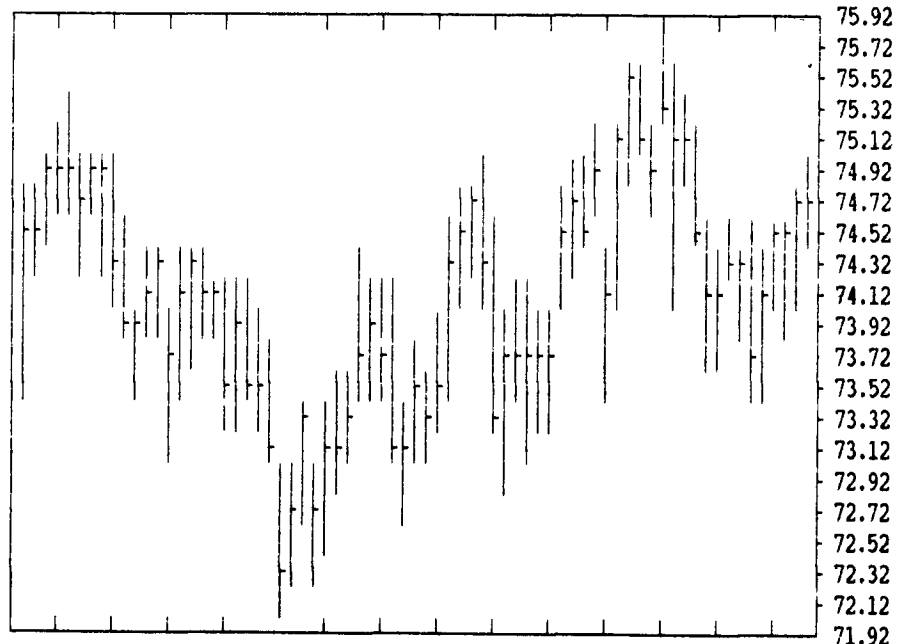
DTN GRAINS 16 DEC CORN CONTRACT HIGH: 2.950 LOW: 2.184



DTN LIVESTOCK 17 DEC LIVE HOGS CONTRACT HIGH: 48.40 LOW: 40.55



DTN LIVESTOCK 18 DEC CATTLE CONTRACT HIGH: 75.75 LOW: 69.40

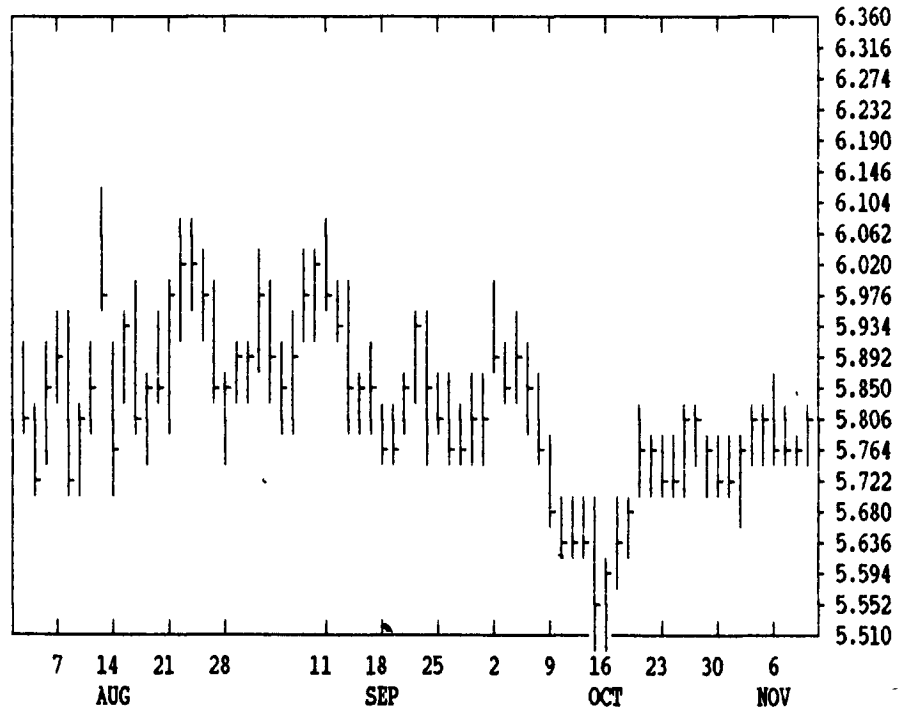


DTN FUTURES 10 11/09 TECHNICAL COMMENTS

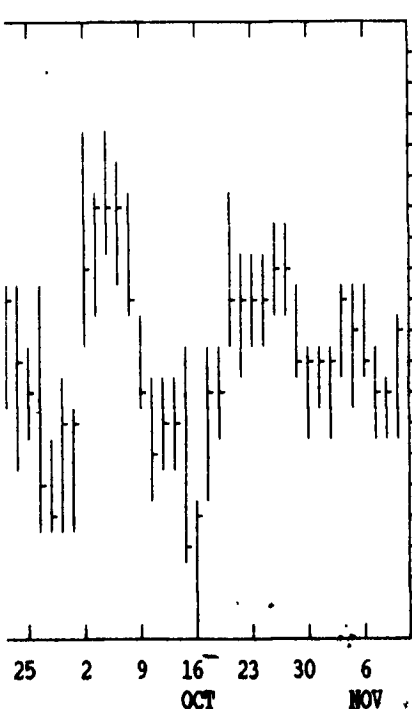
	CLOSE	MOVING AVERAGES			PAST WEEK'S (ENDING 11/03)			CURRENT		
		4-DAY	9-DAY	18-DAY	HIGH	LOW	CLOSE	SUPPORT	RESISTANCE	
DEC WHEAT	4.03 1/4	4.04 1/2	4.01 1/2	4.03 1/2	DEC WHT	4.32	3.94	3.98 1/2	3.87 1/2	4.15
JLY WHEAT	3.57 1/4	3.57	3.53 7/8	3.54 1/8	JLY WHT	3.54 1/2	3.47	3.49	3.42	3.60
KC DEC WHT	4.06 1/2	4.05	4.01 7/8	4.01 7/8	KC DEC	4.04	3.94 3/4	3.96 1/2	3.88	4.15
KC JLY WHT	3.60 1/4	3.58 1/8	3.54 1/2	3.54 1/8	KC JLY	3.55 1/2	3.46	3.49	3.30	.
DEC CORN	2.36 1/2	2.37 5/8	2.38 1/2	2.40	DEC CORN	2.42 3/4	2.37 1/4	2.41 3/4	2.30	2.48
MAR CORN	2.40 3/4	2.41 3/8	2.42 1/4	2.43 5/8	MAR CORN	2.45 1/2	2.40 3/4	2.44 1/4	2.35	2.55
DEC90 CRN	2.39 1/2	2.39 1/8	2.38 3/4	2.39 1/4	DEC90 CN	2.40 3/4	2.36 3/4	2.41 1/4	2.30	.
NOV BNS	5.67 3/4	5.64 7/8	5.64	5.63 1/4	NOV BNS	5.68 3/4	5.56 1/2	5.61 3/4	5.40	5.85
JAN BNS	5.80 1/4	5.78 1/4	5.77 3/4	5.76 1/3	JAN BNS	5.83 1/2	5.70 1/4	5.75 1/2	5.70	6.00
NOV90 BNS	5.98 1/4	5.94 1/2	5.90 1/2	5.85 7/8	NOV90 BN	5.93	5.81 1/2	5.83 3/4	5.50	6.00
DEC MEAL	183.50	182.45	182.83	183.39	DEC MEAL	184.60	180.90	182.80	180.00	189.00
DEC OIL	19.35	19.27	19.26	19.13	DEC OIL	19.46	18.99	19.23	18.50	19.50
DEC CTTL	74.82	74.62	74.36	74.71	DEC CTTL	74.65	73.65	74.12	73.50	77.00
FEB CTTL	74.55	74.29	73.97	74.26	FEB CTTL	74.25	73.17	73.42	72.50	74.50
NOV FDRS	83.17	83.07	82.96	83.01	NOV FDRS	83.25	82.20	82.40	81.30	84.50
DEC HOGS	47.52	47.84	47.27	47.09	DEC HOGS	48.40	45.65	46.17	45.00	48.40
FEB HOGS	47.70	47.81	47.05	46.53	FEB HOGS	47.90	45.17	45.62	45.20	48.32
FEB BELS	63.17	61.94	59.21	55.83	FEB BELS	59.60	51.70	51.85	53.00	.

SOYBEANS			SOYBEAN MEAL			SOYBEAN OIL					
NOV	5690	5630	5676* +46	DEC	1836	1813	1835* +17	DEC	1941	1919	1935* +13
JAN	5830	5764	5802* +34	JAN	1821	1803	1820* +13	JAN	1962	1943	1959* +15
MAR	5940	5894	5926* +30	MAR	1818	1800	1816* +10	MAR	2005	1986	2002* +15
MAY	6044	6000	6032* +26	MAY	1808	1793	1807* +10	MAY	2040	2023	2039* +16
JULY	6114	6070	6104* +24	JULY	1803	1793	1802* +8	JULY	2070	2052	2070* +17
AUG	6110	6090	6104* +24	AUG	1802	1794	1795* +10	AUG	2075	2065	2075* +17
SEP	6020	6000	6010* +26	SEP	1802	1791	1800* +13	SEP	2085	2075	2082* +17
NOV	6000	5960	5982* +20	OCT	1798	1792	1797* +7	OCT	2095	2085	2092* +20

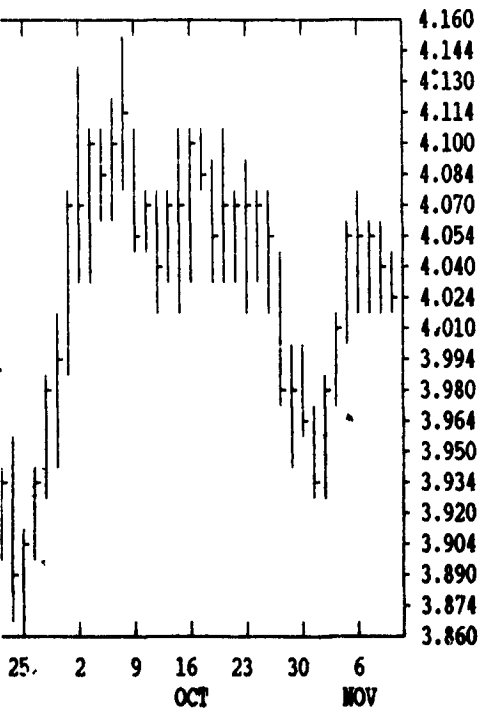
DTN GRAINS 22 JAN SOYBEANS CONTRACT HIGH: 7.670 LOW: 5.510



DTN GRAINS 23 DEC SOYMEAL CONTRACT HIGH: 270.0 LOW: 175.5



DTN GRAINS 18 DEC WHEAT CONTRACT HIGH: 4.404 LOW: 3.780



CORN				CHICAGO WHEAT				K.C. WHEAT						
	HIGH	LOW	LAST	CHG		HIGH	LOW	LAST	CHG		HIGH	LOW	LAST	CHG
DEC	2380	2362	2364*	-14	DEC	4040	4022	4032*	-4	DEC	4070	4046	4064*	+14
MAR	2414	2404	2406*	-6	MAR	4076	4054	4070*	-4	MAR	4020	4002	4020*	+4
MAY	2452	2444	2446*	-4	MAY	3876	3852	3866*	-14	MAY	3870	3844	3860*	-4
JULY	2490	2480	2482*	-2	JULY	3582	3564	3572*	-6	JULY	3610	3590	3602*	+6
SEP	2430	2414	2414*	-4	SEP	3624	3614	3614*	-10	SEP	3654	3610	3654*	0
DEC	2400	2382	2394*	+6	K.C. SORGHUM				MINN WHEAT					
MAR	2464	2450	2462*	+6	DEC	2144	2140	2144*	-6	DEC	3872	3862	3870*	+2
OATS				MAR	2190	2180	2184*	-14	MAR	3974	3960	3970*	0	
DEC	1424	1416	1424*	+2	MAY	2254	2214	2230*	-10	MAY	3942	3920	3920*	-16
MAR	1540	1526	1536*	+4	JULY	2250*		-10	JULY	3750	3740	3744*	-10	
MAY	1602	1590	1602*	+10	SEP					SEP	3720	3710	3710*	-6