

Adams Co. DHIA

dhia Monthly Report

Pennsylvania Dairy Herd Improvement Association

September, 1989
Rolling Herd Average

Name	Brd.	No. Cows	% Days In Milk	Milk Lbs.	Fat Lbs.
Leroy Deputy	B3	118.2	85.3	20,450	782
R+K Cunningham	B3	45.4	85.4	18,858	766
Penn Gate Farm	3	67.7	84.9	18,905	765
Roy A Weaner Jr	3	65.1	88.8	19,101	755
Brown Valley Farm	3	71.7	88.3	17,563	710
Wayne H Rodgers	B3	94.4	87.1	18,066	693
Michael Danner	B3	50.5	89.8	18,647	691
Lagging Stream Farm	B3	130.6	84.8	16,528	675
Ray Dutterer	G8	69.2	88.7	17,744	674
Ber Crk	3	69.3	85.1	17,285	673
Robert C Hoffman	3	26.7	85.6	18,192	668
Way Brite Farms	B3	144.7	90.3	17,699	667
Frank Ludwig	B3	37.4	84.9	16,802	662
Yellow Buttercup Farm	3	178.4	88.8	16,108	659
Jeff+Mary Kay Roche	3	58.0	85.3	20,208	650
Jeff Mary Kay Roche4	3	9.3	82.5	13,165	649

Buttonwood Farms	3	154.1	85.6	16,528	647
John J Hess	B3	165.0	84.7	18,700	646
Adam F Lobaugh	3	37.2	89.3	16,797	642
Kehr Acres	3	84.7	87.5	15,957	638
Zeppdale Farms	B3	119.1	89.0	17,282	636
Jo Jen Hess	8	10.7	80.4	19,193	638
MJ Starner & Sons	B3	136.5	85.9	16,622	633
MR & CS Durboraw	3	63.4	90.1	16,408	632
Stoner Dairy	G8	74.2	87.4	16,514	632
Donald Todt	B3	55.1	86.3	16,588	631
Kraybill Miller	G8	38.8	91.1	16,322	622
Larry Holtzinger	B3	43.4	87.0	16,302	616
Leroy Basehoar	B3	75.2	80.4	15,402	602
Rhodes Enterprise II	G3	55.4	91.9	17,251	593
Pleasant Acre Farms	G3	71.0	87.1	15,085	586
Getty Acres	B3	192.1	83.5	16,521	584
Robel Acres	3	90.0	89.4	15,337	582
Robert & Linda Meyers	B3	90.5	87.5	14,914	578
Piney Lane Guernseys	2	56.7	88.2	12,231	573
Fred-Chris McGillvray	B3	73.7	83.6	17,078	573
Melanie A Houser	4	3.6	87.9	10,800	562
Kenneth H Wenger	B3	78.8	83.9	15,299	562
Richard K Herr	B3	184.7	83.1	15,458	545
Grove Bros	B3	74.0	81.3	16,238	542
Charles E Mayers	G3	46.4	96.1	13,819	540
Pennstead Farm	B8	43.8	87.4	12,652	518
Roger L Sprague	B3	55.1	88.7	14,969	514
Robert L Rohrbaugh	B3	73.5	86.9	13,572	499
Hubert R Brown Sr	B8	66.0	83.0	12,948	491
Guy Sprague	B3	22.4	85.1	13,339	479
Shamrock Farm	G3	64.2	74.9	11,685	419

Lactations

Stoner Dairy

Lancaster Farming Saturday, November 11, 1989-D11

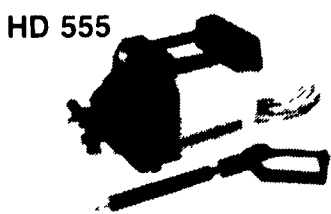
203	3	3-4	305	17,927	4.3	782
Brown Valley Farm	3	1-11	305	18,997	4.1	792
Sing	3	2-1	305	18,817	3.7	712
Sheryl	3	2-1	305	18,817	3.7	712
Penn Gate Farm	3	4-10	305	29,159	4.1	1020
Silver	3	3-7	305	26,187	4.0	1067
Brandy	3	2-7	305	20,678	3.8	799
Alexa	3	2-2	305	19,375	3.6	705
Empress	3	2-2	305	19,375	3.6	705
Pennstead Farm	3	6-9	305	15,831	4.5	718
Nelly 6	3	0-0	305	15,696	4.6	731
Pat	3	0-0	305	15,696	4.6	731
Adam F Lobaugh	3	4-5	303	21,387	3.9	836
Idona	3	4-5	303	21,387	3.9	836
MR & CS Durboraw	3	4-9	305	20,311	4.1	837
D 42D	3	4-9	305	20,311	4.1	837
MJ Starner & Sons	3	5-5	295	18,076	3.8	700
416	3	6-3	305	21,504	3.9	843
150	3	6-3	305	21,504	3.9	843
87	3	4-5	303	18,011	4.1	752
Leroy Basehoar	3	3-0	305	18,708	3.8	717
20	3	3-0	305	18,708	3.8	717
Donald Todt	3	5-6	305	19,951	3.7	756
65	3	3-10	305	17,599	4.1	738
16	3	3-10	305	17,599	4.1	738
37	3	2-8	305	16,393	4.3	717
Buttonwood Farms	3	6-8	305	20,738	3.9	811
Annie	3	5-11	298	21,017	4.1	874
Kitty	3	5-8	299	19,303	4.2	815
Amanda	3	4-7	305	20,382	3.7	759
Rachael	3	4-0	305	18,782	4.3	811
Sophia	3	3-4	305	21,150	3.7	786
Scarlet	3	3-2	305	18,543	3.8	708
Ivorey	3	3-2	305	18,543	3.8	708
Roy A Weaner Jr	3	6-3	305	24,224	3.6	873
28	3	6-3	305	24,224	3.6	873

(Turn to Page D12)

Fall Clearance Sale

High Pressure Washers

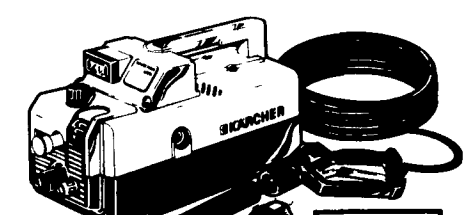
Cold water at high pressure. Powerful: 800 psi. Lightweight: only 33 lbs. Goes anywhere the dirt is 115 V Reconditioned



\$199⁰⁰
(HD 555)
6 Only

FREE!
Special brush attachment included with each unit. A \$33.95 value.

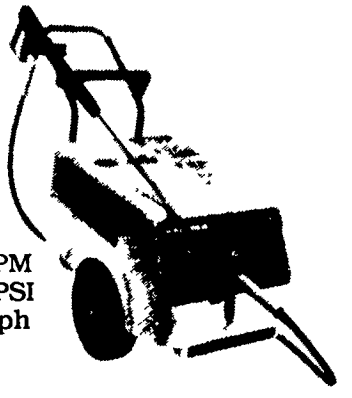
2.2 gpm 1000 psi 115V



FREE!
Special brush attachment included with each unit!

Reconditioned (HD570)
10 Only
\$349⁰⁰

Reg. \$2195.00. **NOW \$1495⁰⁰**
(New In Box)
(HD 1010 WS)
4 Only



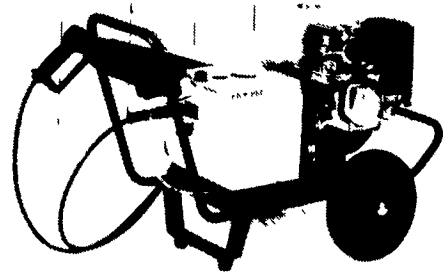
4.0 GPM
2000 PSI
2201 ph

Reg. \$1395.00. **NOW \$995⁰⁰**
(New in Box)
HD 750 WS
4 Only



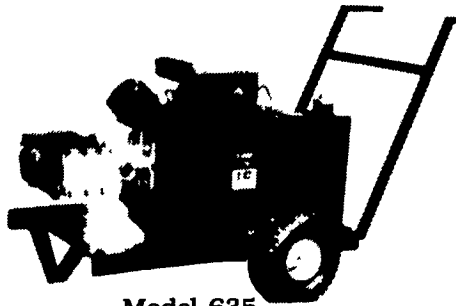
Now! HD 750 WS
Mobile high-pressure cleaner for all purposes!
Robust. High Performance.
3.0 gpm 1500 psi
220 i ph

Gas Engine Powered



Reg. \$3295.00. **NOW \$1,995⁰⁰**
(HD1050B)
(New In Box)
5 Only

Model HD 1050B
11 HP Honda
4.2 gpm 2800 psi



Model 635
18 HP B&S
6 gpm 3000 psi
Reg. \$3495.00
now \$1,895⁰⁰ (1 only)
Model 635

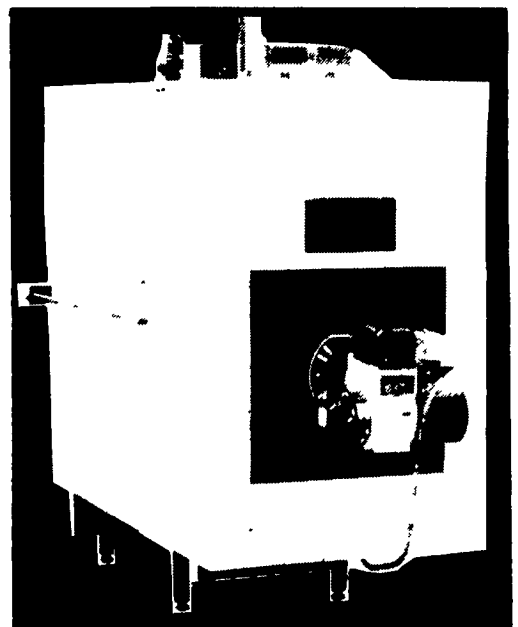
Kochel Equipment Co.
Rt. 23
Elverson, PA 19520
PA 800-922-9680 215-286-5519

FRANK A. FILLIPPO, INC.

- WANTED -
DISABLED & CRIPPLED COWS, BULLS & STEERS
Competitive Prices Paid
Slaughtered under government inspection

Call: Frank Fillippo -
Residence - 215-666-0725
Elam Ginder - 717-367-3824
C.L. King - 717-786-7229

Multifuel Boilers and Furnaces Available In Residential And Commercial



(Rear view of multifuel boiler)

Wood, Coal and Oil

- Additional Models:
- Waste Oil Boilers & Furnaces
 - Automatic Coal Stokers
 - Hand Fired Central Heating Systems
 - Wood Burning Space Heaters
- See These Heating Systems At:
PENN MFG. CO.
393 W. Lexington Rd.
Lititz, PA 17543
Call (717) 626-1397 or 627-2303