

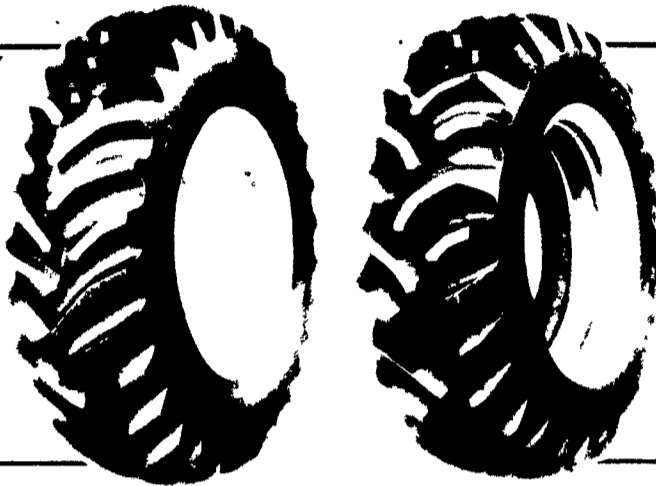


# BUMPER CROP of VALUES

## Dyna Torque Radial

- Revolutionary three-lug/pitch design improves traction and ride
- Computer designed "natural" shape casing improves tire body life
- Radial construction provides better traction, lower fuel and overall costs

FARM FOR LESS IN 1989!



## Dyna Torque II

- Excellent traction with long-bar, short-bar lugs
- Designed for improved stability and roadability plus reduced vibration
- Strong angle-banded lugs have self-cleaning design
- High-strength polyester cord body and heavy duty rim-shield help protect tire from damage

CALL YOUR GOODYEAR DEALER LISTED BELOW

## Farm Utility Tire

- Strong, long wearing
- High flotation
- Heavy load capacity
- Rugged 3-T cord body

OUR PREMIUM CASING VALUE PRICED!



## Dyna Rib

- Designed for higher horsepower two-wheel-drive tractors
- Better mobility and more uniform pressure distribution than three-rib design
- Bead area protected by thick rubber shield
- Excellent flotation and mobility, smooth ride, uniform ride

THE ANSWER TO THREE RIB FAILURES!

**HOT DEAL!**



### 4 Rib

750-16 6 Ply TT	\$65.00
95L15 6 Ply TT	\$71.00
11Lx15 6 Ply TT	\$85.00
11Lx15 8 Ply TT	\$89.00
1000-16 6 Ply TT	\$93.00
1000-16 8 Ply TT	\$95.00
1100-16 6 Ply TT	\$108.00
1100-16 8 Ply TT	\$114.00

## SPECIAL PURCHASE

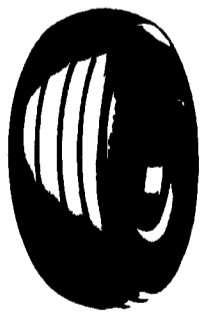
### WRANGLER RADIALS P235/75R15

P Wrangler SL OBL	<b>\$99<sup>95</sup></b>
P Wrangler SL OWL	
P Wrangler XL OBL	
P Wrangler XL OWL	
Wrangler AT OWL	

YOUR CHOICE

Qty's. Limited...No Rain Checks...Hurry!  
Sale Ends Nov. 30

### FARM UTILITY WAGON TIRES



95L-15 6 Ply TT	\$49.00
95L-15 8 Ply TT	\$51.00
95L-15 6 Ply TL	\$54.00
95L-15 8 Ply TL	\$56.00
11L-15 6 Ply TT	\$52.00
11L-15 8 Ply TT	\$49.95
11L-15 8 Ply TL	\$59.00
12L-15 10 Ply TT	\$73.00

### BIAS PLY SPECIALS

#### 750x16 Size

Rib Hi Miller C TL.....	\$69	Custom X Grip CTL.....	\$79
Rib Hi Miller D TL.....	\$79	Custom X Grip DTT.....	\$82
Tracker LT D TL.....	\$79	Custom X Grip DTL.....	\$86
Super H Miller D TT.....	\$79	Custom X Grip ETL.....	\$99
Super H Miller D TL.....	\$84	Tracker XG DTL.....	\$82
Super H Miller E TL.....	\$91	Trac. Sur Grip CTL.....	\$77
		Trac. Sur Grip DTL.....	\$79

Qty's. Limited...No Rain Checks...Hurry!  
Sale Ends Nov. 30

**The American Farmer & Goodyear**  
The Partnership Continues Growing

See Your Independent Dealer For His Price And Credit Terms. Price And Credit Terms As Shown At Goodyear Commercial Tire Centers In All Communities Served By This Newspaper.

<b>Peoples Sales &amp; Service Inc.</b> Oakland Mills, PA 717-436-2735	<b>Caldwell's Tire Service Inc.</b> Rt. 213 South Chestertown, MD 301-778-5585	<b>Zimmerman Farm Service</b> School Rd Bethel, PA 717-933-4114	<b>Colledge Tire</b> 510 W State St Kennett Square, PA 215-444-5030	<b>Goodyear Commercial Tire Center</b> 165 Keystone Rd. Chester, PA 215-494-2160	<b>Lebanon Valley Imp. Co.</b> 700 E. Linden St. Richland, PA 717-868-7518	<b>Horlacher &amp; Sherwood</b> 153 E. Tioga Tunkhannock, PA 717-836-1116	<b>Henry Tire Service</b> 3108 W Mkt St York, PA 717-792-9779	<b>Goodyear Commercial Tire Center</b> I-81, Rt 39 Harrisburg, PA 717-657-1005	<b>Goodyear Auto Service Center</b> 260 W. Hamilton Ave. State College, PA 814-238-4955
<b>P. Lebzelter</b> Rt. 72 & Lauch La. Lancaster, PA 717-569-3776	<b>Dices Tire Shop</b> 1421 Lincoln Way Chambersburg, PA 717-264-9312	<b>Sunbury Frame</b> 5th & Arch Sts. Sunbury, PA 717-286-4921	<b>Kirkwood Tires, Inc.</b> 1929 Kirkwood Hwy. Newark, DE 302-737-2460	<b>GOODYEAR</b>			<b>BHM Farm Equipment</b> RD 1 Rt. 934 North Annaville, PA 717-867-2211	<b>Shueys Sales &amp; Service</b> Jonestown Road Ono, PA 717-865-4915	<b>Umbergers of Fontana</b> RD.#4 Lebanon, PA 717-867-5161