

**Public Auction Register**

Closing Date Monday 5:00 P.M.  
of each week's publication

SAT DEC 2 - 10AM, Personal Property & Buildings, located along Hartz Store Rd., Brecknock Twp., Berks Co., Dale Green, owner, Horning Farm Agency, Aucts

SAT DEC 2 - 11AM, Business Liquidation, 3 heavy wreckers, roll back truck, garage tools, Campbell, NY, Stafford's Repair, owner, Pirrung Auctioneers, Inc

SAT DEC 2 - 2PM, Secluded, wooded 2 acre bldg lot off Red School Rd., Caernarvon Twp., Lanc Co., Zoned Residential, Gilbert & Dorothy Lytle, owners, Horning Farm

**Agency, Aucts**

SAT DEC 9 - 9AM, 89 Acre Farm, 1 mi. W. off Rt 25 at Sacramento, along the Sacramento to Klingerstown Rd in Hubley Twp., Western Schuylkill Co., PA, Estate of Annie R. Martz, Mike and George Deibert, Aucts

SAT DEC 9 - 9:30AM Sharp Farm Toys, Dealers Promo Tractors, etc., located at Newberrytown Fire House, Newberrytown, PA, Ike Eichelberger, Auct

SAT DEC 9 - 10AM, Hardware, building materials, lots of lumber, located at 347 W Bridge St., Phoenixville, PA, Shanaman's Lumber, owner, Horning

**Farm Agency, Aucts.**

FRI DEC 13 - 1:30PM State Graded Feeder Pig Sale, Carlisle Livestock Market, Inc Exit 12 Off I-81, Phone 717-249-4511

THURS DEC 14 - 10AM, Real Estate, 5 building lots, located W Caln Twp., Honey Brook Rd from Compass red light take Rt 10 N approx. 1 mi., at White-man's Mower Shop take Cambridge Rd. S. 6/10 mi to auction site, James N Cairns Estate, Ira and Dale Stoltzfus, Aucts

FRI DEC 15 - 11AM, Modern Farm Equip, International & John Deere Tractors, located along Rt 501 just N of Bethel, PA, David Younker, owner, Horning Farm Agency, Aucts

FRI DEC 22 - 1:30PM State Graded Feeder Pig Sale, Carlisle Livestock Market, Inc. Exit 12 Off I-81, Phone 717-249-4511

SAT DEC 30 - 5PM, Farm Toy Auction, at the Farm & Home Center off Rt 72 near Lancaster, PA, Toy Show opens at 9AM same day, Dale Stoltzfus, Auct

**JANUARY**

SAT JAN 6, Mark and Marjory Tait Dairy Herd Auction, Campbell, NY, Pirrung Auctioneers, Inc.

FRI JAN 26 - 10AM, 105 Acre Farm, located from Lewisburg take Rt. 45 W. approx 3 mi to Hoffa Mill Rd, turn right .5 mi to farm on right, Jacob S. Stoltzfus and Betty L. Stoltzfus, owners, Elton Horning and Ron Bard, Aucts

SAT JAN 27 - 11AM, Super Line of Late Model John Deere Grain Farm Equipment, Davidsons Mill Lane, Jamesburg, NJ, Clarence and Marilyn Dey, owners, Col Fred R Daniels Auctioneers, Inc

**FEBRUARY**

FRI FEB 22 AND SAT FEB 23 - 9AM Each Day, Antique Tractors, Engines, New, Used and abuse farm equip., 10 mi E. of Lancaster, 2 1/2 mi W. of New Holland, turn off Rt. 23 on S. Groffdale Rd, turn left on Musser School Rd, Lanc Co., PA, Elias S. Beiler, owner, Robert E. Martin and Son, Aucts

SAT FEB 24 - 9AM, Consignment Sale, Frederick Fairgrounds, Frederick, MD, Equine Service of Maryland

**MARCH**

MON MARCH 5 - 9AM, Annual Spring Consignment Auction of Farm Equipment, Lebanon Area Fairgrounds, Lebanon, PA, Lebanon Valley Auction Co., Inc

SAT MAR 10 - 10:30AM, A Nice Line of Farm Equipment, Grand View Rd., Skillman, NJ, Leonard James, owner, Col. Fred R Daniels Auctioneers, Inc

**Dairy and Livestock Sales**

**DEALER IN ALL KINDS OF LIVESTOCK**

Also Crippled & Down Cattle

**MARLIN S. IRWIN**

Quarryville, PA  
PH: 717-786-3016

**DAYTIME DAIRY COW SALE**  
*Friday,*  
**November 17, 1989**  
12:00 Noon

Selling at Kling's Dairy Sale Barn, located 15 miles North of Carlisle on route 74, 2 1/2 miles N.E. of Landsburg, Perry Co., Pa.

**100 HOLSTEINS - 2 JERSEYS**

Selling for Art Kling - 25 Fresh & Close Cows & 1st-Calf Heifers; Approx. 1/2 Registered - Some with Production Records.

Sires of Registered Animals include - Walkway Chief Mark, Modik Valiant Count, Chairman, Quality Ultimate, Butlerview Matador, Marlin, Coldsprings Ira and others. "Top Young Cattle that are Producing!" 2 Springing 1st Calf Grade Jerseys selling also.

Selling for Norman Rosenberry, 4442 Jack Rd., Chambersburg, Pa.

Complete Milking Herd Dispersal Consisting of 75 Holstein (2 Red/Whites); 25 Sell recently fresh - 15 Springers - Balance in Different Stages.

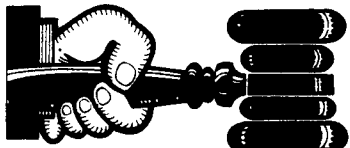
This is a Free-Stall Herd - Milked in a Parlor (Emphasis on Good Udders & Good Feet & Legs). Young Herd that has Several fresh cows milking heavy - Well-Cared for.

Ready to go to work! Don't Miss This Herd if You Need Milk! Also, Several local consignments of Springing 1st-Calf Heifers due shortly.

Sale Managed By-



R.D. #1, Box 66  
Landsburg, Pa. 17040  
717-789-3883 (Office) - Lic. #500



**AUCTIONEER'S DIRECTORY**

**DWIGHT D. MILLER AUCTIONEER**  
**QUALITY SERVICE**

RD#2 Box 2716  
Bethel, Pa.  
(717) 933-5736

**ELTON HORNING FARM AGENCY**

REAL ESTATE - AUCTIONEER  
MORTGAGE BROKER - APPRAISALS

**RON & BOB BARD**  
717-786-1146 — 717-786-4246

**Kreider & Kline Auctioneers**

COMPLETE PROFESSIONAL AUCTION SERVICE  
**REAL ESTATE — FARMS & RESIDENTIAL**  
PERSONAL PROPERTY — ANTIQUES —  
FARM STOCK SALES — LIQUIDATIONS

RANDAL V. KLINE  
AUCTIONEER-REALTOR  
717-733-1006

LLOYD H. KREIDER  
AUCTIONEER  
717-786-3394

ROY E. GOOD, JR.  
AUCTIONEER  
215-445-4309

**ROGERS COMMUNITY AUCTION INC.**

Located 8 Miles East Of  
Lisbon, Ohio Or One Mile West Of  
Rogers, Ohio On St. Rt. 154.

**FRIDAYS**

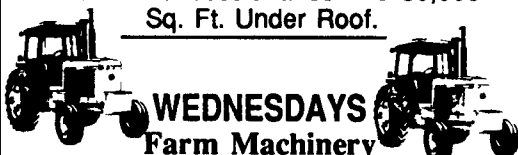
Produce, Egg, Miscellaneous Auction  
Starts At 6 P.M.

Poultry Auctions Start At 7 P.M.

Doors Open At 7:30 A.M.  
To Accept Consignments

**Open Air Market All  
Day And Evening**

Doors Open At 7:30 A.M. To Rent  
Market Spaces. Over 2.5 Miles Of  
Outside Concessionaires And 30,000  
Sq. Ft. Under Roof.

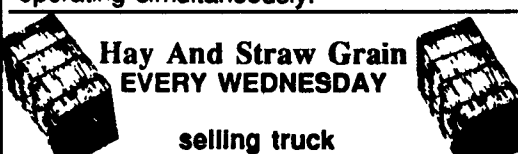


**WEDNESDAYS**

**Farm Machinery  
Consignment Auction**

The F... **WEDNESDAY EVENING**  
**OF EACH MONTH at 6 P.M. sharp.**

We are open the preceding Tuesday of each sale day to check in consignments from 8 A.M. to 8 P.M. Handling farm machinery, lawn and garden equipment, tools, fire wood, cut lumber and related miscellaneous items. Five auctioneers operating simultaneously.



**Hay And Straw Grain**  
**EVERY WEDNESDAY**

selling truck  
load lots by the bale or ton  
starting at 1 P.M.

Barn Opens at 8 A.M. to Consign  
**Jim and Ken Baer**

**Auctioneers and Managers**

Phone (216) 227-3233 or (216) 227-3236  
"Sells Every Week Since 1955"

**PROFESSIONAL Auctioneering**

PAUL E. MARTIN  
R.D. 1, Box 553  
Stevens, Pa. 17578

JOHN D. STAUFFER  
217 Andrea Dr.  
Lititz, Pa. 17543

Complete Auction Service We assist you and advise you from the planning stages of your auction to the completion of your auction

For A Consultation In Your Home Call  
Paul (717) 733-3511 — John (717) 665-5099  
Licensed and Bonded

Auctioneer:  
Steve Petersheim:



**COMPLETE AUCTION SERVICE**

**Antiques  
Household Goods  
Farm Equipment  
Real Estate**

Take Note - Our New Phone Number  
215-593-2828

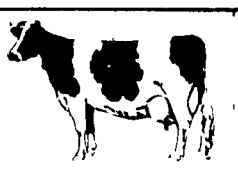
**SALE EVERY TUESDAY**

Graded Sale  
1st Tuesday each month  
2 P.M.  
Horse Auction  
2nd Saturday each month  
1 P.M.



Marshall, Va  
703-364-1566

**NEW HOLLAND SALES STABLES, INC.**



Located 12 Miles East of Lancaster, just off Rt. 23,  
New Holland, Pa.

**SPECIAL DAIRY SALE CONSIGNMENTS**

For  
**WEDNESDAY, NOVEMBER 8, 1989**

Helper Sale Starts At 11:00 A.M.  
Fresh Cows & Springers At 12:00 Noon

8 Vaccinated Heifers, 4 month bred, Sire Power breeding, out of a top herd from Wayne County. Consigned by John Wetmore.

1 top load fresh cows from Franklin County, some cows milking 70 to 90 lbs. per day. Consigned by Marvin Eshleman.

1 top load fresh cows from Wisconsin, some cows milking 70 to 80 lbs. per day. Consigned by Dale Hostetter.

25 head Grade Vaccinated open heifers, 2 Red & Whites. Records on the Dams.

- Also Selling
- \* 1 load fresh and springer cows consigned by Norman and David Kolb.
  - \* 1 load fresh and springer cows consigned by Merle Brenneman.
  - \* 1 load fresh and springer cows consigned by Marvin Eshleman.
  - \* 1 load fresh and springer cows consigned by Raymond Smucker.
  - \* 1 load fresh cows consigned by Dale Hostetter.
  - \* 1 load fresh cows consigned by Albert Albright.

**PLUS MANY MORE CONSIGNMENTS**  
For More Information Contact:

Abe Diffenbach 225L  
717-354-4341-Barn

Norman Kolb  
717-397-5538