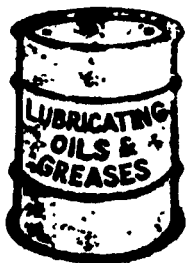


1 FARM EQUIPMENT

Larry L. Adair



Quality Lubricants Since 1976

(717) 755-8638

55 Gal. Drums

Major Brand Oil Now In Stock

- 15W40 **\$178.60**
- SAE 30 Series 3 & Better **\$174.73**
- Tractor Fluid **\$180.84**

With Drum Deposit, Or Exchange For A Good Drum
Delivered Free In A 50 MI. Radius of York, PA
Will Be At

New Holland Sales Stables
2nd & 4th Mondays Of Each Month
9 AM - 1 PM

1974 John Deere 440-B Log Skidder, 18 4x26 tires w/1 set ring chains, low hours on rebuilt engine, new radiator, excellent condition Ready for work \$14,000 215/538-2855

1975 IH 815 Combine, hydrostatic, 12' grain head, 6 row corn head, \$6,000 301-898-7426

1977 Chevy 4WD 3/4 ton Pickup, P/S, Automatic, needs transmission \$800 717/534-1253

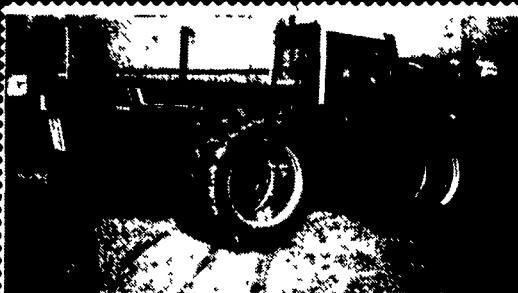
NH 518 Manure Spreader
NH Model 256 Rake excel. cond.
Farmhand Wheel Rake Used 737 Huskers
Used 838 Husker
Used 323 1 row pickers
Used NI 324 329A Picker Sheller
Good Used Lawn and Garden Tractors and Mowers
Good Used Snapper heads for uni-system 3 or 4 row

ROY H. BUCH INC.
Ephrata
717-859-2441



1984 Case W36
4 Yard, Good Cond.
\$25,000

Belmont Farm
301-833-9091



IH 3588 2+2 Tractor
Duals Front & Rear, 3 Remote Outlets & Dual PTO, Like New Condition, Always Shedded

\$21,000 OBO.

Call 302-697-2639

After 6 PM

C'MON IN AND BROWSE THROUGH TINKERER'S ROW

These machines are "AS IS" TRACTORS

- JD: 3010, utility, gas w/front end loader; 730 diesel, direct start; 440 diesel dozer; 60, MC dozer w/blade.
- IHC: 574 diesel w/2250 quick-attach FE ldr.; 350 utility.
- FARMALL: H; 450; Cub; Super C, fast hitch w/2-row cultivator; 560 gas, fast hitch; Super M, WFE.
- FORD: 8N w/forklift attachment; 8N; 3000.
- AC: B; B w/side mower; G w/cultivator; HD-5 crawler/loader HD-4 crawler/loader
- LONG: 560 Huber Maintainer.
- CASE: 580 diesel w/FE ldr, 530 TLB; DC
- CAT: D2 Crawler (No Blade).

MARSHALL MACHINERY, INC.

Route 652, 5 Miles East of Honesdale, Pa. Directly Off Route 6.

Call Us: (717) 729-7117

We're Open 6 Days A Week - Monday Through Saturday 8-5

bobcat

- Bobcat 825, Perkins diesel, 66" bucket..... **\$6,900**
- Bobcat 743, 60" Bucket..... **\$11,500**
- Bobcat 743 w/909 Backhoe, 4 buckets..... **\$16,000**
- Bobcat 743, diesel, needs work..... **\$3,200**
- Bobcat 641, diesel..... **\$5,500**
- Bobcat 600, 54" Bucket..... **\$3,500**

Call **JIM NIXON** for Prices, Information

LCL Construction Equipment
2590 Unionville Pike
Hatfield, PA 19440
(215) 362-2510



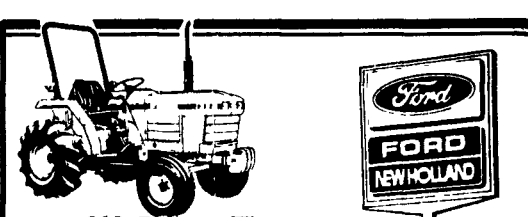
- MF 510 Diesel Combine
- MF 13 ft. Table Pickup Reel
- MF 750 Diesel Hydro Combine
- MF 1859 13 ft. Floating Cutterbar
- MF 1144 Corn Head (New Paint)
- JD 440 Diesel Combine

OTHER EQUIPMENT ON OUR LOT

- MF 85 Diesel
- MF 165 Diesel 28" Rubber
- MF 65 Gas 38" Rubber
- Ferguson To 20 With Loader
- MF 124 Baler With Thrower
- Gehl 2500 A Skid Loader (New Paint)
- Gehl 95 Grinder Mixer
- 3 Pt. Hitch Snow Blower (540 PTO)
- 1973 Dodge D200 4WD With Myer's 7 Ft. Power Angle Snow Plow
- 1983 IH 1850 B With DT466 Diesel 21 Ft. Stake Body And Power Lift Gate

WEB SNYDER, INC.
RD #1 Watsonstown, PA 17777
717-538-5555

Also See Or Call Us Today For Your Best Deal On New Gehl And Massey Equipment



- NH 320 Baler w/Thrower
- Ford 5500 TLB w/4 In 1 Bucket
- Ford 5000 Dsl. SOS, WF
- Woods C-80 Rotary Cutter
- NH 488 Haybine
- (2) NH 489 Haybine
- Ford 138 Soil Keeper
- NH 358 Grinder Mixer
- NH 352 Grinder Mixer
- Ford 7710 4WD, Excel.
- NH 461 Haybine
- NH 717 Harvester w/2R Cornhead
- NH #36 Crop Chopper
- NH #26 Blower
- NH 707 Harvester w/2 Heads
- JD 336 Baler w/Kicker
- NH 278 Baler w/Thrower
- Ford 671 Dsl.
- NH L555 Skid Loader
- JD 410 TLB w/Cab
- Woods HS 105 Side Mower
- TW30 w/Duals, Excel. Cond.
- TW15 900 Hrs., Excel. Cond.
- NI 305 Corn Picker
- Int. 440 Baler w/Thrower
- MF 200 Harvester w/2R Head
- NH 890 Harvester, 3 Row Head
- Ford 1320 4WD, TLB, 200 Hrs., Excel. Cond.
- Ford 1510 4WD w/Lder., Excel. Cond.
- Ford 3910, 96 Hrs., Excellent
- Ford 2810, Low Hours
- Ford 8000 w/Ldr.
- Ford 642 4WD Combine
- Case 1740 Skid Loader
- Case 580C TLB
- Oliver 1855
- Ford 9N
- Brilliant 12' Roller Harrow
- Case 10' Disc
- Ford 7710 2WD, 135 Hrs., Excellent
- Ford 6600 w/Cab, Dual Power
- JD 2010 Track Loader

Special For October

- NH 716 Forage Wagon w/610 Running Gear
- \$6,495 Cash**

We Ship Parts UPS Daily

CHARLES S. SNYDER INC.
RD3 Tamaqua, PA 18252
Phone: 717-386-5945



USEL EQUIPMENT

Special

Lawn & Garden

326T Baler w/Spring Tension, #70 Belt Bale Thrower, Hydraulic Directional Pkg., Stub Axle, Hydraulic Drive, Wagon Hitch \$11,000 Save \$\$\$\$

- 1 - Grove forage wagon & running gear \$1,050
- 1 - (New) Deutz baler w/thrower \$7,100
- 1 - (New) Badger Straw chopper w/8HP Wisconsin engine \$1,750

New Badger Forage boxes in stock

- 1 - (New) Badger forage blower #BN2054 \$2,950
- 1 - AC 185 tractor

Used Bedding Chopper, like new, w/elect. motor

- 1 - 1850 Oliver w/Pront Wheel Assist
- NH Grinder Mixers 351 - 353 - 354
- 1 - IH 225 Self-Propelled Mower Conditioner
- 1 - 731 Bobcat Steerloader w/6' Bucket, Perkins Eng.
- 1 - New Idea 2 Row Picker Sheller, Pull Type

1 - AC A-438 Corn Head

1 - 489 Haybine (Fair)

1 - 270 NH Hayliner Baler

1 - IH 430 Baler w/Thrower

1 - IH 37 Baler w/Thrower

1 - KU 250 Deutz Rake Demonstrator

1 - NH 29' Bale Elevator

1 - 782 Harvester w/Forage Head

1 - Krelder Haybox on 8 Ton McCurdy Wagon Gear

Bunk Feeders, Taper Board Feeders & Elevators

#275 McCurdy Grain Boxes..... **\$875**

#275 McCurdy Grain Boxes and 8 Ton Wagon Gears Adjustable Tongue and Tires..... **\$1,950**

380 Series Zimmerman Elevators

- 28' Zimmerman Elevator w/55 Chain..... **\$1,775**
- 32' Zimmerman Elevator w/55 Chain..... **\$1,850**
- 36' Zimmerman Elevator w/55' Chain..... **\$2,065**
- 40' Zimmerman Elevator w/55' Chain..... **\$2,120**
- 44' w/62 Chain..... **\$2,430**
- 48' w/62 Chain..... **\$2,520**

Brake Winches Available For Competitive Elevators

36" Zimmerman 2 Stage Wall Fan w/1/2 HP Motor..... **\$688**

36" Zimmerman Portable Fan w/1/2 HP Motor..... **\$608**

48" Zimmerman Portable Fan w/1 HP Motor..... **\$743**

24" Circulating Fans

Show Ease Stalls & Fabrication

Gutter Grates - Windows

Cow Mats

Stainless Steel Stalls made to order

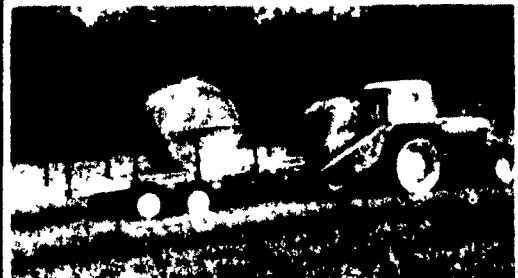
BHM Farm Equipment

RD#1 Annville, PA (717) 867-2211

Evenings 738-1718



The Hay Rider (Patent Pending) For Large Round Bales; Hay, Straw, Corn



Self Loading



Self Unloading

Also Available:

Dual wides for 40" and 48" wide bales

Saves Hay - Saves Feed - Saves Money

"Take the 'Adventure' out of moving large round bales."

Your Local Dealer Is:
STOLTZFUS FARM SERVICE, INC.

P.O. Box 99, Cochranville, PA 19330
PH: 215-593-2407