

Pakistan Group Visits Bedford County Farms

BY LINDA WILLIAMS
Bedford Co. Correspondent
MANN'S CHOICE (Bedford Co.) — A Group Study Exchange Program from Pakistan and representing Rotary International toured some Bedford County farms recently.

Five women and their group leader were hosted by the Bedford Rotary Club. Farms were included on their tour because Pakistan's livelihood is 70 percent dependent on agriculture.

"We are impressed with the modern methods of farming here," said Naheed Shah, a career diplomat with the Pakistan Foreign Service, and a member of the group.

"It is much more technical than ours, but then, we expected it would be."

The group visited farms in the Manns Choice area of Bedford County and took an in-depth look

at the Fair Farm owned and operated by Ralph Fair and his three sons, Tom, Richard, and John.

The Fairs milk 60 to 70 head of Holstein cattle and farm 640 acres of ground.

"Pakistan farms would have less acreage and all the cows would be milked by hand," explains Shah.

Few of the farmers in Pakistan would have an education. "Landowners, perhaps," says Shah, but definitely not those who do the farming." A farm in Pakistan would have as many as 30 to 35 persons working for a share of the crops.

The land is irrigated by canals. Punjeba has the most extensive irrigation system in the world.

Cotton, rice, leather, and tobacco are exported from the country. "In some years, sugar cane would

also be exported," Shah continues. Farmers raise angora goats and the wool is used for clothing although little wool is needed in this very warm country.

Those on the tour included Sameena Rahman, a journalist with the Pakistan Times; Nighat

Gohar, a lawyer and Field Assistant with the United Nations World Food Program at Peshawar; Ghazala Usman, a medical doctor; M. Navaid Kahn, a publisher; and Dr. Sabiha Mirza-Khan, a medical doctor; as well as Shah.

Rahman also visited the farm of

Dorothy and Donald Replogle in New Enterprise. The Replogles farm 450 acres of land and milk 120 cows.

Pakistan is spread over an area of 310,403 square miles and has a population of 107 million of which 97 percent are Moslems.



Naheed Shah, Nighat Goati, Ghazala Usman, Geraldine Fair, Sabiha Mirza-Khan, Sameena Rahman, John Remington Fair, (front) and M. Navaid Khan, Russell Fair, John Fair and Kay Fair (back) take time for a picture on the lawn of the Fair Farm near Manns Choice. A group study from Pakistan sponsored by Rotary International participated in the trip.

"I Dare You" Leadership Award Presented

CLEMENTON, NJ — Phaedra Niemczak, a member of the Golden Nuggets 4-H Square Dance Club, has been awarded the national "I Dare You" leadership award in recognition of her personal integrity, balanced living, and motivation for leadership. The honor was presented by Camden County 4-H at their annual 4-H awards night held at the 4-H Center in Blackwood on October 14.

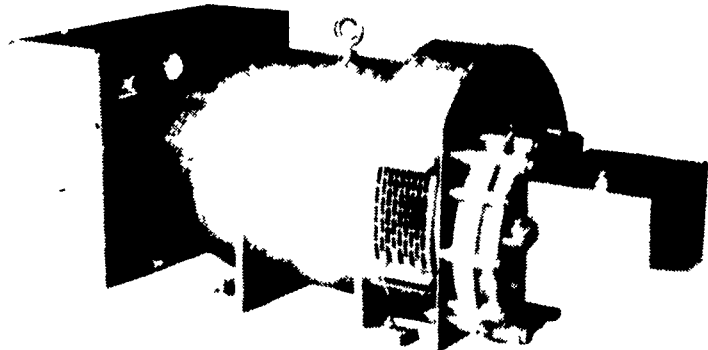
The "I Dare You" award is made available each year by the American Youth Foundation in cooperation with 4-H leaders and county agents across the country. The award was first offered in 1941 by William H. Danforth, founder of the Ralston Purina Company in St. Louis, who dared young people to achieve their highest potential and to influence others through lives of service. The award takes its name from the book, "I Dare You," written by Danforth, in which he commends the balanced life of mental, physi-

cal, social and spiritual developments as the back bone of leadership.

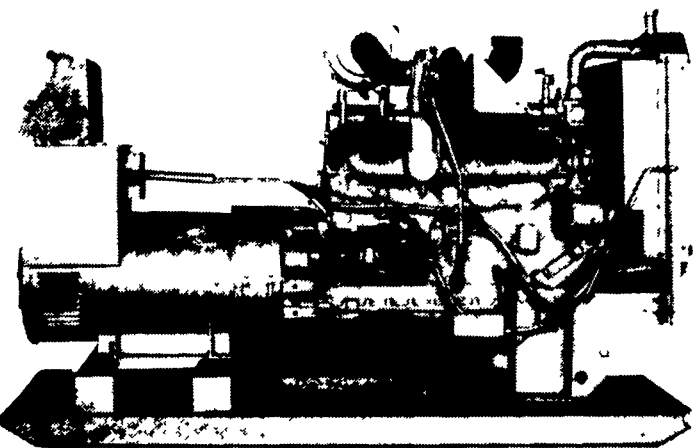
Phaedra was recognized for her outstanding contributions to 4-H as a teen leader. In addition to a certificate of recognition, Phaedra received a copy of Danforth's inspirational book, and a scholarship of \$250 to attend a two-week national leadership conference sponsored by the American Youth Foundation. More than 8,000 schools and 4-H programs participate in the "I Dare You" leadership award each year.

In 1924 Danforth helped establish the American Youth Foundation, a non-sectarian, not-for-profit organization committed to the service of youth through summer camps and leadership conferences. For more information about the "I Dare You" leadership award and the American Youth Foundation, contact their office at 1315 Ann Ave., St. Louis, MO 63104.

STANDBY GENERATORS



PTO Driven



Automatic Systems

MAXI-POWER INC.

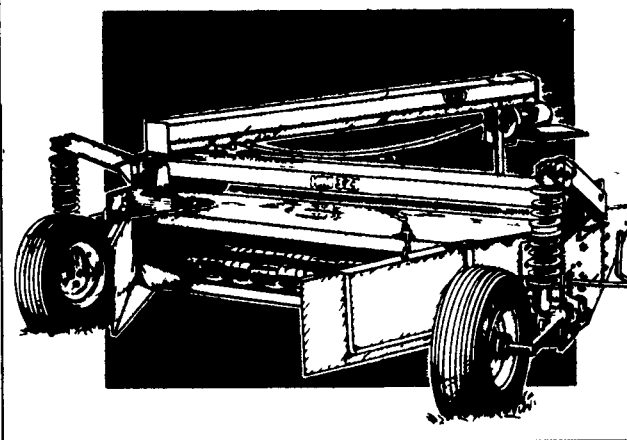
330 Fonderwhite Rd. Lebanon, PA 17042

24 Hr. Service

(717) 273-4544

Radio Dispatch

Fastest cut in the field



Get your hay in the windrow twice as fast as conventional systems with Vicor's KM mower conditioners.

High speed 3-bladed discs make 9000 cuts per minute lifting and slicing clean *without plugging*, even when hay is heavy and wet. Gentle, full width conditioning conserves leaves.

The patented drawbar and drive system lets you operate non-stop, cornering under full power without driveline vibration.

Want a faster harvest? Choose from four dependable KM models with working widths from 7' 10" to 10' 6", or the new 13' centrepivot unit.

And now, all models carry a new, two-year power train warranty!

See One Of
These
Dealers
For Details!

Penna. Dealers

BURCHFIELDS, INC.
112 S. Railroad St.
Martinsburg, Pa.
814-793-2194

STOUFFER BROS.
1066 Lincoln Way West
Chambersburg, Pa.
717-263-8424

MELVIN J. SHEFFER, INC.
121 Railroad St.
Hanover, Pa.
717-637-3808

TRIPLE H EQUIPMENT
RD 1 Box 141
Peach Bottom, Pa.
717-548-3775

M.M. WEAVER & SONS
189 N. Groffdale Rd.
Leola, Pa.
717-656-2321

Maryland Dealers

ELLIOTT EQUIP. & HARDWARE
Rt. 326 & Elliott Rd.
Easton, MD
301-822-8866

E.T. CLINE & SONS
510 E. Wilson Blvd.
Hagerstown, MD
301-739-2223

BEEMERVILLE EQUIP.
Rd 3, Box 610
Sussex, NJ
201-875-5672

SCHAPER BROS.
RD 8, Box 270
Bridgeton, NJ
609-455-1640

H.B. DUVALL
901 East Patrick St.
Frederick, MD
301-662-1125
(Outside MD) 1-800-423-4032

REED BROS.
Potticoat Bridge Rd.
Columbus, NJ
609-267-3383

