

### Public Auction Register

Closing Date Monday 5:00 P.M.  
of each week's publication

#### DECEMBER

FRI DEC 1 - 7:15PM,  
Feeder Cattle Sale, at  
Greencastle Livestock  
Market, Inc., Greencastle,  
PA, Lyle Reed, Auct

SAT DEC 9 - 9:30AM  
Sharp Farm Toys, Dealers  
Promo Tractors, etc.,  
located at Newberrytown  
Fire House, Newberrytown,  
PA, Ike Eichelberger, Auct

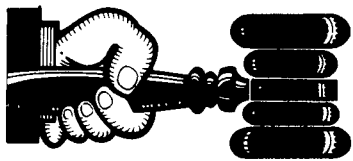
FRI DEC 13 - 1:30PM  
State Graded Feeder Pig

Sale, Carlisle Livestock  
Market, Inc. Exit 12 Off  
I-81, Phone 717-249-4511

FRI DEC 22 - 1:30PM  
State Graded Feeder Pig  
Sale, Carlisle Livestock  
Market, Inc. Exit 12 Off  
I-81, Phone 717-249-4511

#### FEBRUARY

SAT FEB 24 - 9AM, Con-  
signment Sale, Frederick  
Fairgrounds, Frederick,  
MD, Equine Service of  
Maryland



### AUCTIONEER'S DIRECTORY



**Kreider & Kline Auctioneers**

COMPLETE PROFESSIONAL AUCTION SERVICE  
**REAL ESTATE — FARMS & RESIDENTIAL**  
PERSONAL PROPERTY — ANTIQUES —  
FARM STOCK SALES — LIQUIDATIONS

RANDAL V. KLINE  
AUCTIONEER-REALTOR  
717-733-1006

LLOYD H. KREIDER  
AUCTIONEER  
717-786-3394

ROY E. GOOD, JR.  
AUCTIONEER  
215-445-4309

## ELTON HORNING FARM AGENCY



REAL ESTATE - AUCTIONEER  
MORTGAGE BROKER - APPRAISALS

**RON & BOB BARD**  
717-786-1146 — 717-786-4246



## Wolgemuth Auction Service

"If it's saleable, we'll sell it."

PERSONAL PROPERTY  
FARM EQUIPMENT  
REAL ESTATE, ETC.

Bob 717-665-6684 Dennis 717-664-3893

Auctioneer:

Steve Petersheim:  
Steve Jr.



## COMPLETE AUCTION SERVICE

Antiques  
Household Goods  
Farm Equipment  
Real Estate

Take Note - Our New Phone Number  
215-593-2828

## PUBLIC SALE

Of Household & Wood Shop Items

OCTOBER 21, 1989

at 9:00 A.M.

Located Along Rt. 501 In Reistville,  
4 Miles South Of Myerstown, Pa.

Floor stand drill press, 4" Rockwell jointer, 3 h.p. air compressor, 4 h.p. Briggs & Stratton engine, hyd. pump, lots of wood for small wood shop & firewood, some poplar boards & pine boards, Popular Mechanics books, do-it-yourself books, lots of wood working patterns, milk cans, tool boxes, old Express wagon, single trees & double trees, work bench, old kerosene heater, Remg. chain saw, boot jacks, hyd. jack, dinner bell, lots of bolts, wood screws & nails. **Household Items:** Empire bureau, card table, chairs, 2 seat lawn swing, books, dishes, comforters, afghans, blankets, old Self clocks, wooden wagon wheels, baskets, some crafts & lots of Coleman lanterns & load of other items too numerous to mention & one spring wagon - good shape.

Terms by

**Elam L. & Ruth Stoltzfus, Jr.**

Order Of Sale: Wood & Wood Items, Shop  
Items, Household Items. Spring Wagon 12  
Noon.

Lunch Stand

### REMSBURG

Sale  Service

#### JAMARIE FARM

#### MILKING HERD DISPERSAL

On the farm located near Hampstead in Baltimore Co., Md. From I-83 take Route 137 west (Mt. Carmel Rd.) 7 miles. Turn left on Pleasant Meadow Rd., farm is 1/2 mile on left. From Westminster take Rt. 27 to Rt. 482 and turn right to Hampstead. Turn right at light, go to next light and turn left onto Rt. 88. Go 4 miles and turn left past church onto Pleasant Meadow Rd. First farm on left.

**WED., OCTOBER 18**

10:30 A.M.

**150 REGISTERED HOLSTEINS**

126 Cows - 24 Close or Fresh Heifers  
50 First-Calf Heifers - 35 in Second Lactation  
60 Head Fresh July through Sept.  
45 Head Due Oct. and Nov.  
25 Sell with 18,000 to 20,000 Milk  
17 Sell with 20,000 to 24,410 Milk

All Selling:

No 56	6-2	365	23,730	4 5	1061
No 100	4-3	365	23,110	4 2	981
No 74	3-8	365	22,630	4 0	898
No 12	3-11	365	20,880	4 3	897
No 131	3-10	365	22,210	4 0	888
No 155	4-1	322	24,410	3 6	878
No 151	4-10	365	21,680	4 0	863
No 162	3-5	365	21,690	3 9	859
No 121	3-6	276	21,380	3 8	818
No 53	4-0	292	19,460	4 3	843

NOTE: This is a homebred herd rich in Astronaut and Chief breeding. Size, scale, and strength have been emphasized in the breeding program and the results are evident in the cows. This herd is scheduled for full production during fall base and is carrying a 3.9% test. A great opportunity to add to your milk check!

Tested for Interstate Shipment  
Examined for Pregnancy  
For catalogs contact:

Owner

**JAMES W. &  
ELSIE M. ARMACOST**

17218 Pleasant Meadow Rd.  
Upperco, MD 21155  
Ph. 301-239-7912

Sale Manager  
**REMSBURG SALE  
SERVICE**  
P.O. Box 177  
Jefferson, MD 21755  
Ph. 301-473-8214

## Dairy and Livestock Sales

### NOTICE

To assure that your  
Public Sale appears  
in the Public Sale  
Section we must  
have your advertise-  
ment by 5 P.M. Tues-  
day of each week's  
publication.

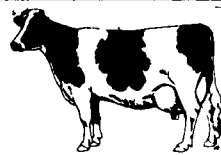
**DEALER IN ALL KINDS  
OF LIVESTOCK**

Also Crippled & Down Cattle

**MARLIN S. IRWIN**

Quarryville, PA  
PH: 717-786-3016

### NEW HOLLAND SALES STABLES, INC.



Located 12 Miles East of Lancaster, just off Rt. 23,  
New Holland, Pa.

#### SPECIAL DAIRY SALE CONSIGNMENTS

For

**WEDNESDAY, OCTOBER 18, 1989**

Heifer Sale Starts At 11:00 A.M.

Fresh Cows & Springers At 12:00 Noon

\*\*\*\*\*

Butler County Herd of 25 Head, 4 Just Fresh, 4 Springers, Balance in All Stages. Consigned by Robert Kennedy.

\*\*\*\*\*

4 Jersey Cows, 4 Jersey Heifers, from one herd.

\*\*\*\*\*

14 head fresh cows from New York State, some cows milking 70 to 90 lbs. per day.

\*\*\*\*\*

Also Selling

- \* 1 load fresh and springer cows consigned by Norman and David Kolb.
- \* 1 load fresh and springer cows consigned by Merle Brenneman.
- \* 1 load fresh and springer cows consigned by Marvin Eshleman.
- \* 1 load fresh and springer cows consigned by Raymond Smucker.
- \* 1 load fresh cows consigned by Dale Hostetter.
- \* 1 load fresh cows consigned by Albert Albright.

PLUS MANY MORE CONSIGNMENTS

For More Information Contact:

Abe Diffenbach 225L  
717-354-4341-Barn

Norman Kolb  
717-397-5533

## PUBLIC AUCTION

**WEDNESDAY  
OCTOBER 18, 1989**

10:00 A.M.

### G. NAOMI MCKINNEY ESTATE

LOCATION: 211 Frederick Street, Highspire, Dauphin County, Pa. Rt. 230 in Highspire at traffic light at Turkey Hill/Twin Kiss-north on White House Lane to stop sign-left .8 mile on Rosedale Avenue to Frederick Street.

#### ANTIQUES COLLECTIBLES

New England style grandfather clock; Duncan Phyfe drop wing dining room table; small corner cupboard; (3) drop wing tables; high dry sink; ladies writing desk; youth rope bed; cane rocker; **VICTORIAN**; buffet, set of 6 chairs, side chairs, (3) marble top tables, love seat, Rosebud chair, 3 pc. marble top bedroom suite; **OAK**; side by side; wardrobe, rocker, chest of drawers, washstand, sectional bookcase; upholstered wing chair; painted piano stool; nightstands; plank chairs; table top music box. Spinning wheel; piano stool; cradle; candle stand; brass pedestal marble top table; dough tray; milk cans; PRR lantern; baskets; wooden express wagon; small wooden wheelbarrow; Lightning sled; flower stand; **CLOCKS**; Seth Thomas mantle, Ansonia wall, Bristol shelf, New Haven wall.

Theodore Haviland French limoge china sest - serv. for 12 inc.; England bowl & pitcher; milk white punch bowl; china bathroom set; early china; asst. milk white; steins; 3 pc. Reading homemade train; balance scale; goblets; lots of glassware & china; flo blue; kerosene lamp; pewter; pictures; sad irons; candle mold; elec. lead dome lamp; mink coat & stole; Persian coat; marbles; Roseville; jewelry; Hamilton pocket watch; stamp collection; Edison Standard Phonograph w/horn; German rifle; iron & tin toys; crocks.

NOTE: Very partial listing - Many items still to be unpacked. Inspection after 8:00 auction day. Nice clean merchandise.

Auction By

**BETTY MCGHEE- Executrix  
BILL BYERS- EXECUTOR**

HARRY H. BACHMAN- Auctioneer  
AU-000033-L (717) 867-1809

TERMS: **CASH** - No out of state checks  
Food Available