

Philadelphia Vegetables
Oct. 11, 1989

CLEAR 47-63.
ARTICHOKES CA ctn 24-36s few 14.00 fair qual 9.00-10.00 mos 10.00 48s fair qual 8.00-9.00 60s fair qual 8.00.
ASPARAGUS ABOUT STEADY
CHILE 12-lb crt & ctn bchd 12s exlge few 15.00-18.00 occ high as 22.00 lge few 22.00 one lot 15.00 MEXICO 12-lb crt bchd 12s exlge, lge & std 20.00 sml 18.00.
BEANS LOWER various bu containers Round Green type unless otherwise stated SC 20.00 GA 15.00-20.00 mos 18.00 VA 16.00-18.00 fair cond 10.00 MD 12.00-15.00.
BEANS-LIMA NO SUPPLIES.

BEETS NJ crt bchd 12s 6.00 topped bubkt 10.00 OH topped 25-lb film bags 7.00.
BROCCOLI ABOUT STEADY CA ctn bchd 14s 11.00-11.50 mos 11.00 few 12.00 18s 11.50-12.00.
BRUSSEL SPROUTS CA 25-lb ctn 14.00-15.00.
CABBAGE ABOUT STEADY 1-3/4 buctn & crt med green unless otherwise stated NJ 4.50-6.00 mos 5.00 Red 6.00 PA 4.50-6.00 mos 5.00 lge 5.00 NY 50-lb sacks lge 4.50-5.00 MD 5- 5.50 CANADA ctn Savoy type 12s 9.00 Red 16s 8.00.
CARROTS ABOUT STEADY 48-1 lb film bags in film sacks CA med-lge 8.50-9.50 few 8.00 few 10.00 WA med 7.50-8.00 CO med-lge 7.25 50-lb sacks loose jumbo CA 7.00 CO 5.50 WA 6-6.50

CANADA 5-5.50 ctn bchd 24s CA 10.00 few 10.50.
CAULIFLOWER ABOUT STEADY CA ctn film wrpd 12s 12.00-14.00 mos 12.00-13.00 WA ctn film wrpd 12s 10.00-11.00 CANADA flat ctn 12s unwrpd 8.50-9.00.
CELERY ABOUT STEADY CA ctns 2-2-1/2 doz 10.00-11.00 few 11.50 4 doz 11.00 OH crt 2-2-1/2 doz 9.00 3 doz 8.00.
CHINESE CABBAGE OH 1-1/4 buctn 8.00-9.00 CA 50-lb ctn Nappa 11.00-12.00 Bok Choy 11.00-12.00.
CORN ABOUT STEADY wirebound crt approx 4-1/2-5 doz NY Yellow & White fair appear 8.00 FL Yellow fair qual 7.00 White fair qual 9.00.
CUCUMBERS ABOUT STEADY 1-1/9 buctns & ctns waxed medium unless otherwise stated NJ fair appear 12.00 sml fair qual 6.00-8.00 GA 14.00-16.00 fair

qual 10.00 NY 16.00-18.00 VA fair qual 10.00-12.00.
EGGPLANT ABOUT STEADY NJ 1-1/9 buctn & crt med 8.00 few 7.00 wrpd one lot few 12.00 GA 1-1/9 buctn med 10.00 fair cond 5.00-6.00 fair qual 6.00-7.00.
ENDIVE ABOUT STEADY OH 1-1/9 buctn 6-6.50 mos 6.00 NJ 1-1/9 buctn 5.00-6.00 CA ctn 24s 8.50.
ESCAROLE ABOUT STEADY OH 1-1/9 buctn 6.00-7.00 NJ 1-1/9 buctn 5.00-6.00 CA ctn 24s 9.50.
GARLIC per lb CA 30-lb ctn White Colossal 1.35 super jbo 1.25 exjbo 1.15-1.20.
GREENS ABOUT STEADY crt approximately 1-1/2 bu bchd unless otherwise stated NJ Collards 5.00-6.00 Mustard 6.00 Turnip Tops 6-6.50 mos 6.00 Kale 6.00-7.00.
LEEK LOWER NJ crt bchd 12s 10.00-12.00.
LETTUCE ICEBERG HIGHER ctn 24s unless otherwise stated CA 13.00-15.00 fair appear low as 12.00 film wrpd 24s

12.50-13.50 30s 11.00 NJ fair qual 7.00 AZ few sales 12.00- 14.00 ROMAINE HIGHER CA 24s ctn 16.00-18.00 mos 17.00 crt 21.00 NJ ctn 24s fair qual & cond 5.00 OH crt 24s 8-8.50 BIG BOSTON CA ctn 24s 9.00-11.00 few 12.00 OH crt 24s few 5.00-8.00 BIBB OH 12-qt bkt 6.00 LEAF CA ctn 24s 12.00-14.00 mos 12.00-13.00 Red 12.00-14.00 OH crt 24s incl Red 6.50-7.00.
MUSHROOMS STEADY PA 4-qt bkt med-lge 5.25-5.50 sml-med 4-4.50 10-lb ctn med 9-9.50 exlge 11.00-11.50 packages 10-12 oz 9-9.50 3-lb ctn Shiitake 18.00 fair qual 12.00-13.00 med 12.00.
OKRA SUPPLIES INSUFFICIENT TO QUOTE.
ONIONS-GREEN ABOUT STEADY ctn bchd 48s NJ 10.00 CA one lot 14.00 OH 8.50-9.00.
PARSLEY ABOUT STEADY bchd 5 doz Curly unless otherwise stated OH crt 9.00-12.00 few 8.00 Plain 10.00-12.00 few 9.00 CA ctn 10.00.
PEAS-GREEN NO SUPPLIES.
PEAS-SOUTHERN GA buhmpr Purple Hull fair cond 8.00-10.00.

LEESPORT FARMER'S MARKET, INC.

North end of Leesport, PA Turn East off Route 61

"WHERE FRIENDS MEET"

BERKS COUNTY'S ONLY WEEKLY CATTLE & SWINE AUCTION — WEDNESDAY AT 1 P.M.



FARMER'S MARKET Every Wednesday, 10 A.M. TO 9 P.M.

Garden Fresh Fruits & Vegetables - Bakery Fresh Cakes, Pies and Buns - Butcher Fresh Meats & Cheese - Sporting Goods - Clothing - Furniture - Jewelry - Used Items & Collectibles.

PHONE: 215-926-1307

BILL WEIST & WOODY WEIST, MGRS.

TIPS ON BUYING SEED CORN

Here's what one farm editor says —

"Buy '90 inputs in '89? Looks like it might be a good move, especially if you can get early bird discounts. But price breaks must be 8% to 10% to come close to matching alternative places for stashing extra cash."

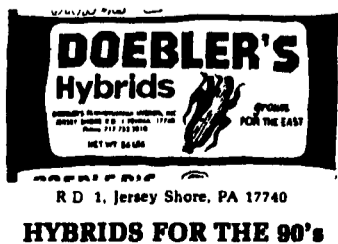
"Corn, soybean and wheat growers probably will open throttle a big further next year by planting more acres. Same holds for alfalfa growers."

"Buying ahead is one way to ensure that you get the seed you want in a first come - first served market. Legumes may be in tightest supply."




John Vogel in Money Trends.
Reprinted with permission from
Sept. 8, 1988 Pennsylvania Farmer

Folks at Doebler's couldn't agree more —

- That's why we offer a full 10% cash discount this fall on all seed corn. And you take that 10% on top of regular sale and volume discounts.
- Our new Dealer Alert program all but guarantees you get what you ordered. If we haven't got it, your dealer won't sell it. Simple as that.
- But don't buy on price alone. Check out quality, too. With all seed corn companies. Then see us. No one beats Doebler's on seed quality and hybrid performance. Sale ends November 15.



ATTENTION CATTLE FEEDERS
Start Them Off Right
With
LACTO-VITA

A concentrated supplemental water-soluble vitamins and DDS-1 Lactobacillus acidophilus (developed by University of Nebraska), for all livestock and poultry.

- It aids in getting animals off to a good start during periods of stress, reduced feed intake, shipping, diseases, extreme changes in weather, and ration changes. It implants beneficial bacteria and maintains normal intestinal flora and inhibits the growth of pathogenic organisms.
- Contains vitamins A, D₃, E, B₁₂, Riboflavin, and other B vitamins, and DDS-1 Lactobacillus acidophilus.
- Dosage: mix 4 oz. to 50 gallons of drinking water
- Packaged in 5 lb. pail, 6 pails in a case

UNITED AGRI-SERVICES, INC.
9201 Penn Ave. South #10 Minneapolis, MN 55431
1-800-422-3371
Distributor Warehouse, Ephrata, PA
UAS Products Are Available From The Following Dealers:

David S. Fisher Farm Oxford, PA	Levi J. Fisher Farm. Mill Hall, PA	Aaron S. Groff & Son Ephrata, PA 717-354-4631	Huber Animal Health Myerstown, PA 717-866-2246
K&M Farming Supplies Shippensburg, PA 717-432-7939	Kauffman Farm Supply Belville, PA 717-635-2131	Kauffman Farm Supply Mt. Pleasant Mills, PA 717-539-4871	David S. Smucker Farm Lykens, PA

HOOPER
C.B. HOOPER & SON, INC.
Intercourse, PA
(717) 768-8231

HOOPER EQUIPMENT, INC.
Middletown, DE
(302) 378-9555

TWO LOCATIONS
The Saving Place

WE SHIP PARTS DAILY
Via UPS - PPSH - BUS - AIR FREIGHT; ETC.



HOURS
Mon.-Fri. 7 AM-5 PM; Sat. 7 AM-Noon

**CALL US...
It Could Be We Have It**

case ih
Authorized
UPS Station

YOU STAY PUT
Pick Up Your
Phone And
Place Your
Parts
Order
With
Us