



(Continued from Page D12)

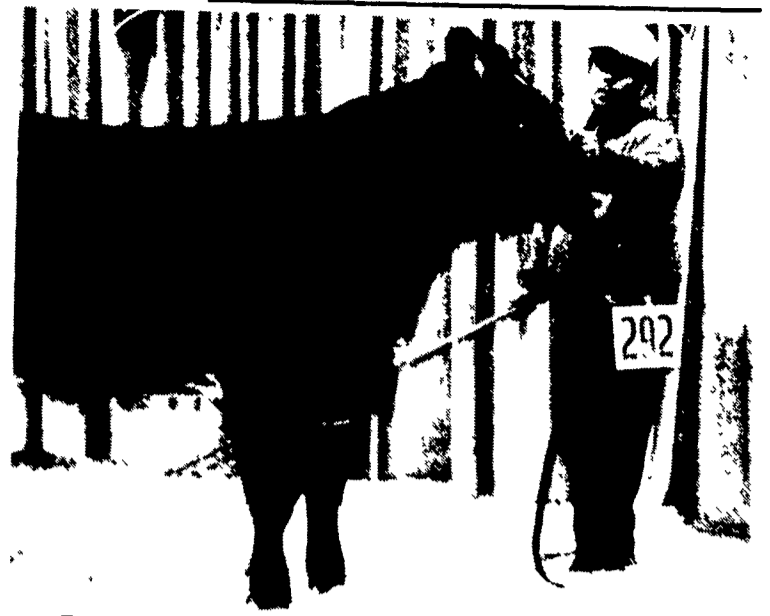
- Junior Yearling**
 1 Tami Lea Rose, PA, 2 Jamie Boyer, PA, 3 Seth Small, PA
- Senior Yearlings**
 1 Lori Limousin/John Lori, PA
- Calf Champion**
 Green Pastures & Fairlane Farms, OH
- Reserve Calf Champion**
 Circle L Limousin Land Co., OH
- Junior Champion**
 F.J. VA Runser
 Fairmount Farm, VA
- Reserve Junior Champion**
 Maple Lane Farm & Fairlane Farms, PA
- Senior Champion**
 Tami Lea Rose, PA.
- Reserve Senior Champion**
 Jamie Boyer, PA.
- Overall Grand Champion Female**
 F.M.: VA Runser
 Fairmount Farm, VA.
- Overall Reserve Grand Champion Female**
 Green Pastures & Fairlane Farms, OH
- Early Junior Bull Calves**
 1 Quail Run Ranch, PA
- Senior Bull Calves**
 1 Circle L Limousin Land Co., OH; 2. Green Pastures & Fairlane Farms, OH.
- Junior Yearling Bulls**
 1. Quail Run/Birchwood Farms, PA; 2. Fairlane Farm, OH, 3 J&J Limousin, PA



The grand champion Limousin bull at KILE was owned by Circle L Limousin from Burbank, Calif. At the halter is showman Jerry Talsma.

- Senior Two-Year-Old Bulls**
 1. Circle L Limousin Land Co., OH
- Calf Champion**
 Circle L Limousin Land Co., OH.
- Reserve Calf Champion**
 Green Pastures & Fairlane Farms, OH.
- Junior Champion**
 Fairmount Farms/Wulf & Son, VA
- Reserve Junior Champion**
 Quail Run/Birchwood Farms, PA
- Senior Champion**
 Circle L Limousin Land Co., OH.
- Pair Of Heifers**
 1 Circle L Limousin, OH; 2 A H Mosher, PA.
- Grand Champion Bull**
 Circle L Limousin, OH

- Reserve Grand Champion Bull**
 Green Pastures & Fair Lane Farms, OH.
- Get-Of-Sire**
 1. Green Pastures/Fairlane Farms, OH.
- Produce Of Dam**
 1. Green Pastures/Fairlane Farms, OH
- Best Five Heads**
 1 Circle L Limousin & Land Co., OH
- Premier Exhibitor**
 Circle L Limousin & Land Co., OH.
- Premier Breeder**
 Circle L Limousin Land & Co., OH.
- OPEN BREEDING CATTLE CHAROLAIS**
- Late Summer Yearling Females**
 1 Eric J. Irvine, PA
- Intermediate Champion**
 Eric J. Irvine, PA
- Grand Champion Female**
 Eric J. Irvine, PA



Fairmount Farm of Keswick, Va., represented by Kevin McLaren at halter, showed the grand champion Limousin at KILE.

- Senior Yearling Bulls**
 1 Sleepy Valley Farm, NJ
- Senior Champion Bull**
 Sleepy Valley Farm, NJ
- Grand Champion Bull**
 Sleepy Valley Farm, NJ.
- ANGUS**
- Junior Heifer Calf, Class 1**
 1 Lee E. Miller, MD, 2. Nichole High, PA; 3 Erdenheim Farm, PA.
- Junior Heifer Calf, Class 2**
 1 Jennifer Calderazzo, PA, 2 Thomas M. Bross IV, PA, 3 Charles Faller III, MD.
- Champion Junior Heifer Calf**
 Jennifer L. Calderazzo
- Reserve Champion Junior Heifer Calf**
 Lee E. Miller
- Late Senior Heifer Calf**
 Byrniey Farms, VA
- Early Senior Heifer Calf**
 T&J Farms, PA
- Champion Senior Heifer Calf**
 T&J Farms
- Reserve Champion Senior Heifer Calf**
 John P. Hausner
- Early Summer Yearling Heifer**
 1 Indian Creek Farm, PA, 2 Susan Eishenhour, PA, 3 Jennifer L. Calderazzo
- Champion Intermediate Heifer**
 Indian Creek Farm
- Reserve Champion Intermediate Heifer**
 Susan Eishenhour
- April Junior Yearling Heifer**
 1 Indian Creek Farm, 2 John P. Hausner, VA, 3 Mary Godfrey, PA
- March Junior Yearling Heifer**
 1 Sandra Eishenhour, PA, 2 Lee E. Miller & Trevaillon Farm, MD, 3 Erdenheim Farm
- Early Junior Yearling Heifer**
 1 Indian Creek Farm, 2 Tefanie M. Dietz, PA, 3 Joshua Cowell, PA.
- Champion Junior Female**
 Indian Creek Farm
- Reserve Champion Junior Female**
 Indian Creek Farm
- Late Senior Yearling Female**
 Jeffrey Angle, NJ
- Champion Senior Female**
 Jeffrey Angle

(Turn to Page D14)

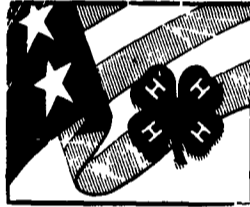
Poultry Pointers

(Continued from Page D11)

with vaccines being developed, may be an additional approach. However it is critical to remember that everyone involved in the production, process and marketing of poultry must play a role in pathogen control. Gains made in one area can be negated if improper methods are used later on in the

system.

The final and perhaps most important "player" in this scenario is the consumer or the food service employee who prepares the food product. By adequately cooking food and avoiding post-cook contamination, we as consumers can do much to assure that our food supply is safe.



DAIRY & CATTLE FARMERS

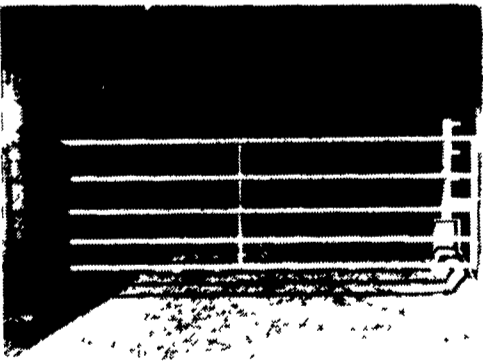
Let Us Design Your Feed Lots To Best Meet Your Needs

CUSTOM BUILT GATES

- * Heavy Hinges & Spring Latch
- * Posts Free From Sharp Edges
- * 2" OD 11 ga. Tubing

SELF LOCKING PANELS

- 3 Sizes
- Cows
- Heifers
- Calves



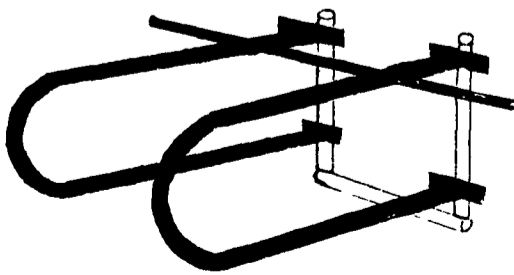
FEED THRU FENCING

Vertical And Slanted Bars



LOOP STYLE FREE STALLS

- * Clamped Cross Over Pipe
- * Mounting - T Angles
- * 2 1/2" OD Tubing 105 Wall



1805 Mountain Rd.
 Manheim, PA 17545

**KREIDER
 MFG. CO.**

(717) 665-6259
 1-800-447-4863

D.S. MACHINE SHOP

238B Old Leacock Rd., Gordonville, PA 17529

INTRODUCING

NEW STYLE STOVES

- LARGE GLASS DOORS • ENERGY EFFICIENT

**PLACE YOUR ORDER NOW!
 FOR EARLY DELIVERY**

CUSTOM BUILT HIGH PRESSURE WASHERS



— UPS Service —



PERSONAL AUTO INSURANCE FOR FARMERS

Now, we have coverage for your personal car or pickup. Another service from the #1 insurer of farm owners in your area.



Old Guard MUTUAL INSURANCE COMPANY

2929 Litz Pike, Lancaster, PA 17604 717-569-5361

ROBINSON-CONNER, INC.
 4750 Delbrook Road
 P.O. Box 1220
 Mechanicsburg, PA 17055
 (717) 761-1919

**KRONENWETTER INS.
 AGCY, INC.**
 21 North St. Marys Street
 St. Marys, PA 15857
 (814) 364-1027

**ALBRIGHT INSURANCE
 AGENCY**
 14 S. 4th Street
 Hamburg, PA 19526
 (215) 562-7818

AMOS J. BALSBAUGH, JR.
 P.O. Box 323
 Schaefferstown, PA 17088
 (717) 949-6534