

Family Day At KILE

(Continued from Page A1)

goat will be performing throughout the day. Blaze will amaze you and your youngsters with his balloon-blowing feats. Ed and Geraldine Berbaum will stroll through the complex entertaining you with songs.

Of special interest to young and old alike is the Pioneer Farm Display. The display features old-time machinery such as antique tractors, equipment and engines. They will be demonstrating apple butter making, corn shelling, the making of corn meal, baling and thrashing. Apple butter will be available for sale to the public.

Agway Racing Pigs will present six shows throughout the day to entertain you. Pigs named "Miss Pennsylvania", "Betty Bacon", and "Go Scat Go" will run the race to the finish. Each 15 minute show features four heats.

Educational Exhibits are displayed throughout the complex to provide you with information on varied areas. The Kessler "Nittany Lion" petting zoo will be open all day for your family to enjoy. Ag



Samuel E. Hayes, Jr.

Commodity Food Booths are set up to tantalize your tastebuds.

Why not plan to "Spend Some Time in the Country" with your family at the 1989 Keystone International Livestock Exposition at the Farm Show Complex in Harrisburg, PA.

Schuylkill Fairgrounds Mortgage

(Continued from Page A22)

have many volunteers. Many of them virtually live at the fairgrounds in the weeks before the fair to help make sure it comes off. We built our milk house with volunteer labor and enclosed an old pavilion to make the craft building. It's funny. A lot of times people don't seem enthusiastic when they join the fair association. But once they get started they just can't break away. It just seems to grow on you," Allison mused.

"The fair is great. It's too bad we can't have it every week of the year, but we are looking for other ways to keep the fairgrounds in use," Craig said.

F.A.R.M. is working to fill the fairgrounds with activities throughout the year. Complete with three ponds, a trout stream, wetlands and forest, the site is ideal for environmental education. According to Morgan, the

district manager for the Schuylkill Co. Soil Conservation District, the group is working to establish a nature center on the site complete with nature trails. The center would be staffed by a full-time environmental education person. "The center will be for the young and old. We are even working to make a nature trail for the handicapped," Morgan explained. The Blue Mountain High School Envirothon team, last year's national winners, trained on the site.

Among the proposed uses of the facilities are: Aquatic life collection and identification, electrical fish shocking in the stream, stream and pond studies, and forest management activities.

"We also hope to have companies use the facilities for picnics," Allison added. A model farm and farm museum are also possibilities in the future.

"We need to get the mortgage paid off or may we may have to increase rates at the fair. This year we charged three dollars a car. Of the fair association's \$127,000 budget only \$27,000 comes from fair week. After all if we can't pay our bills we have to go out of business," Morgan said.

With the fair's amazing popularity and the site's potential it would be a shame to let this dream fade away for a lack of funds. Individuals and business interested in joining the fair association can contact Rev. Jim Swenk (717) 345-2923. Those wishing to help F.A.R.M. pay off the mortgage should call Pat Evanchalk (717) 345-4048 or send their tax deductible gifts to: The Foundation for Agriculture and Resource Management, P.O. Box 125, Schuylkill Haven, PA 17972.

LANDOWNERS

Sell Your Land for What It's Really Worth.

Why let a developer get the lion's share of the profits from the sale of your land.

The *appraised* value of your farm or other acreage, is not the *true* value of your land. Whereas a developer may offer you the appraised amount, he may in fact receive more than twice that amount per acre after the land is subdivided.

Land Management Services Inc.

maximizes your profits by assisting you with the planning and approvals required for you to develop your own land for sale.

If you are thinking about selling your land now or in the future, you owe it to yourself to find out more about our program.

Call Pamela Brown:

In New Jersey 1-609-953-8944

In Delaware 1-302-888-2489

In Pennsylvania 1-215-459-4403

Offices in Medford, NJ, Wilmington, DE, Philadelphia, PA



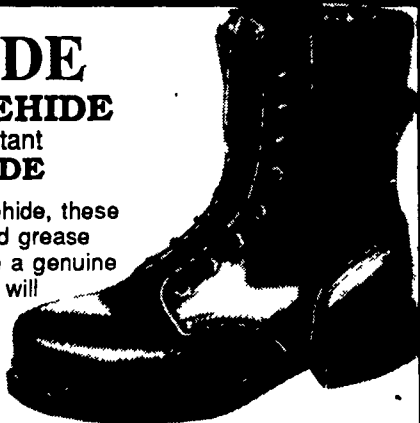
Serving Southeastern Pennsylvania, Southern New Jersey & Delaware

a subsidiary of the Ragan Design Group

HORSEHIDE GENUINE HORSEHIDE

Barnyard Acid Resistant
AMERICAN MADE

Made of tough, long wearing horsehide, these shoes stand manure, silage, oil and grease better than cowhide. Shoes feature a genuine Goodyear welt, nitro cork sole that will not track, steel shank, padded collar, cushion insole and arch support. Ideal for barn use. Sizes 7-13 including 1/2 sizes. 1st quality. Our experience shows that horsehide outlasts good cowhide by 50% or more for farm use.



STYLE	WIDTH	PRICE	SIZE	TOTAL
6 Inch	D, EE, EEE	\$54.95		
8 Inch	D, EE, EEE	\$56.95		
8" Steel Toe	EE Only	\$61.95		
8" Insulated,	snow grip sole	\$64.95		

We ship in 24 hours
We pay shipping

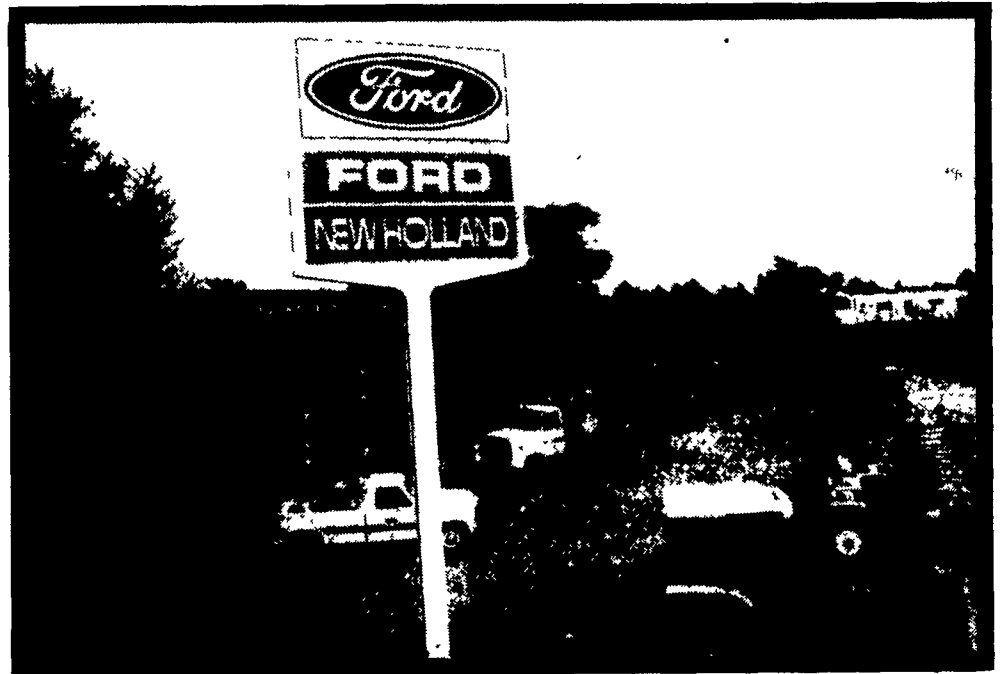
NY Add 7% Tax
Grand Total

W-R SUPPLY CO.
Lake Craine Rd.
Box 388
Earlville, N.Y. 13332
1-800-533-1675

CUSTOMER _____
ADDRESS _____
TOWN _____
STATE _____ ZIP _____

VISA — Phone orders shipped same day — Mastercard

Look To LANCASTER FORD TRACTOR UNDER THE SIGN OF QUALITY



FORD NEW HOLLAND FALL PROGRAMS

FINANCE
0% For 24 Mos.*
1.9% For 12 Mos.
6.9% For 24 Mos.
8.9% For 36 Mos.
9.9% For 48 Mos.
10.9% For 60 Mos.
* Compact Diesels Only

OR

WAIVER OF FINANCE CHARGES TO JAN., 1990

OR

PAY CASH AND TAKE ADVANTAGE OF BIG CASH REBATES

SKID LOADER SALE OVER-STOCKED MUST SELL!

Visit The Ford Tractors Under The Sign Of Quality At The Fairs:
ASK ABOUT FAIR SEASON DEALING DISCOUNTS

- ELIZABETHTOWN FAIR August 21-26
- SOLANCO FAIR September 20, 21, 22
- WEST LAMPETER FAIR September 27, 28, 29
- MANHEIM FAIR October 2 thru 7



LANCASTER FORD TRACTOR, INC.
The Counties Oldest & Largest Ford Tractor Dealer
1655 Rohrerstown Rd.
Lancaster, PA 17601
(717) 569-7063