



FUTURES MARKET TRENDS GRAIN AND LIVESTOCK

This market information provided by ACRES. ACRES is a copyrighted market information service developed by the American Farm Bureau and available to Pennsylvania farmers on a daily basis through Pennsylvania Farmers' Association Farm Management Services. For additional market comments and trading service contact PFA Commodity Futures Service. (717) 761-2740

(Continued from Page A3)

at \$5.76-1/2 after trading in a range from \$5.76 to \$5.82. Meal closed from 10 higher on the October to 130 lower on the March on selling tied to profit-taking. Subsequent to the close, the USDA announced a sale of 200,000 metric tonnes to the Soviet Union.

ACRES WHEAT UPDATE: Wheat futures prices closed from 1/2 cent lower on the December option to 1-3/4 cents higher on the May today with gains made late in the session on a short covering rally. Trading was light with profit-taking and long liquidation featured. Prices strengthened on news that Egypt had purchased 475,000 metric tonnes of export bonus with gains pared by the absence of further export developments. Additional sales were tied to reports of good planting progress and favorable moisture levels. December settled 1/2 cent lower at \$4.09-1/4 after trading in a range from \$4.07-1/2 to \$4.11.

ACRES CATTLE UPDATE: Live cattle futures settled from unchanged on the April option to 30 lower on the October, with losses on the spot option prompted by continued heavy delivery postings. Further pressure was in response to sluggish retail demand with losses held in check by reports of active fed cattle sales at steady to firm prices along with

ideas that packer inventories were dwindling. Feeders settled higher from 10 to 40 points on buying tied to firming cash fundamentals. Talk continues about the unusually large number of deliveries being demanded with concerns surfacing that these cattle are ready to go to the packer with interest in November contracts fading.

CME FEEDER SETTLEMENT PRICE: 10/02/89 \$ 83.32 up \$.13.

NEXT DAY OUTLOOK: CASH PRICES - steady
FUTURES - steady to mixed.

ACRES HOG UPDATE: Live

hog futures staged a minor reversal today and ended the day from 33 to 63 points lower on selling tied to long liquidation and profit-taking. Further pressure was attributed to heavier than expected movement on Tuesday with losses held in check by reports of strong fresh wholesale pork markets as higher prices were quoted for loins, hams and bellies. Additional support came from reports of higher cash prices. Bellies were also lower on long liquidation and spillover weakness from the live hogs with losses held at a minimum by reports of active frozen belly movement.

Greencastle Livestock

Greencastle, Pa.
Monday, Oct. 2, 1989

SLAUGHTER CATTLE RECEIPTS: 534 HD. **SLAUGHTER STEERS:** 110 HD. TREND: STEADY - 1.00 LOWER. **HIGH CHOICE & PRIME 2-4 CHOICE** 2-3 950-1075 LBS. 68.00-71.00, **CHOICE 2-3** 1075-1375 LBS. 68.00-72.00, **CHOICE 2-3 OVER 1375 LBS.** 67.00-71.00, **CHOICE 4 ALL WEIGHTS** 64.00-67.00, **SELECT & CHOICE 1-2** 950-1100 LBS. 65.00-69.00, **SELECT & CHOICE 1-2** 1100-1375 LBS. 64.00-69.00, **SELECT & CHOICE 1-2 OVER 1375 LBS.** 64.00-67.00. **HOLSTEINS:** **CHOICE 2-3** 1050-1450 LBS. 60.00-66.50, **SELECT 1-2** 1050-1450 LBS. 57.00-61.00. **SLAUGHTER HEIFERS:** 78 HD. TREND: STEADY 1.00 LOWER. **CHOICE 2-3** 850-1000 LBS. 64.00-69.00, **CHOICE 2-3** 1000-1250 LBS. 65.50-70.50, **CHOICE 4 ALL WEIGHTS** 60.00-64.50, **SELECT & CHOICE 1-2** 850-1000 LBS. 63.00-67.75.

SELECT & CHOICE 1-2 1000-1250 LBS. 65.00-68.75. **HOLSTEINS:** **CHOICE 2-3** 1000-1350 LBS. 58.00-64.00, **SELECT & CHOICE 1-2** 1000-1350 LBS. 53.00-57.75. **SLAUGHTER BULLS:** 24 HD. TREND: STEADY. **YIELD GRADE 1 ALL WEIGHTS** 59.00-67.00, **YIELD GRADE 2 ALL WEIGHTS** 51.50-58.50. **BULLOCKS:** 3 HD. **CHOICE 1-3** 1150-1375 LBS. 62.50-66.00. **COWS:** 319 HD. TREND: 1.00 HIGHER. **BREAKING UTILITY & COMMERCIAL** 47.00-53.50, **CUTTER & BONING UTILITY** 46.00-52.50, **CANNER & LOW CUTTER** 45.50 & DOWN.

STOCKER & FEEDER CATTLE RECEIPTS: 118 HD. TREND: GOOD DEMAND. **BEEF TYPES:** 200-400 LBS. **STEERS** 85.00-99.00, **BULLS** 82.00-93.00, **HEIFERS** 72.00-84.00; 400-600 LBS. **STEERS** 74.00-86.00, **BULLS** 68.00-74.00, **HEIFERS** 67.00-74.50; 600-800 LBS. **STEERS** 68.00-76.00, **BULLS** 60.00-66.00, **HEIFERS** 62.00-68.50; 800-975 LBS. **STEERS** 64.00-69.00, **BULLS** 54.00-60.25, **HEIFERS** 57.00-63.00. **HOLSTEINS & DAIRY**

CROSS: 200-400 LBS. **STEERS** 80.00-90.00, **BULLS** 75.00-84.00, **HEIFERS** 88.00-91.00; 400-600 LBS. **STEERS** 70.00-83.00, **BULLS** 60.00-64.50, **HEIFERS** 60.00-71.00; 600-800 LBS. **STEERS** 60.00-68.00, **BULLS** 52.00-59.00, **HEIFERS** 60.00-64.50; 800-975 LBS. **STEERS** 56.00-60.50, **BULLS** 52.00-57.00, **HEIFERS** 55.00-60.00.

CALVES: 639 HD. **VEAL CALVES:** TREND: STEADY TO STRONGER. **CHOICE** 150-300 LBS. 90.00-110.00, **GOOD** 150-300 LBS. 75.00-89.00, **GOOD** 80-100 LBS. 83.00-93.00, **STANDARD** 80-100 LBS. 75.00-82.00, **STANDARD** 80 LBS. & DOWN 74.00 & DOWN. **CALVES RETURNING TO THE FARM:** TREND: STEADY. **HOLSTEIN BULLS OVER 100 LBS.** UP TO 160.00, **BULK** 135.00-152.00, **UNDER 100 LBS.** UP TO 145.00, **BULK** 120.00-135.00, **HOLSTEIN HEIFERS OVER 100 LBS.** UP TO 167.00, **UNDER 100 LBS.** UP TO 125.00; **BEEF TYPE BULLS OVER 90 LBS.** UP TO 128.00, **BEEF TYPE HEIFERS OVER 90 LBS.** UP TO 110.00.

SHEEP & LAMBS: 39 HD. **LAMBS:** TREND: 3.00 LOWER. **CHOICE** 80-100 LBS. 53.00-57.00, 100-120 LBS. 52.00-56.00, 120 & OVER 40.00-48.00; **MEDIUM & GOOD ALL WEIGHTS** 50.00-52.00; **FEEDER LAMBS** 60-85 LBS. 60.00-63.00. **SHEEP:** **EWES LEAN** 18.00-22.00, **EWES FAT** 16.00-19.00, **YEARLINGS** 30.00-36.00, **BUCKS** 15.00-19.00.

GOATS: 74 HD. **SMALL** 12.00-24.00, **MEDIUM** 25.00-49.00, **LARGE** 50.00-85.00.

HOGS, SOWS & BOARS: 220 HD. **HOGS:** **BARROW & GILTS** TREND: 1.00 LOWER. 210-250 LBS. 43.00-46.50, 250-260 LBS. 44.50-46.00, 260-270 LBS. 41.00-43.75, 270-300 LBS. 39.00-42.25. **LIGHT HOGS:** 140-180 LBS. 36.00-39.00, 180-210 LBS. 38.00-41.50. **SOWS:** TREND: STEADY. **GOOD SOWS UNDER 400 LBS.** 35.00-38.50, **GOOD SOWS OVER 400 LBS.** 34.00-38.00, **CULL SOWS ALL WEIGHTS** 20.00-31.00. **BOARS:** TREND: STEADY. 180-210 LBS. 30.00-33.00, 210-260 LBS. 33.00-34.00, 260-300 LBS. 29.00-32.50, 300 LBS. & OVER 30.00-32.75.

FEEDER PIGS: (BY THE HEAD) 20-30 LBS. 12.00-15.00, 30-40 LBS. 12.00-18.00, 40-50 LBS. 19.00-20.00; 50-60 LBS. 20.00-26.00.

SALE EVERY MONDAY AT 2:00 PM & EVERY THURSDAY AT 1:00 PM. HAY & STRAW SALE EVERY MONDAY & THURSDAY AT 11:30 AM. SPECIAL FEEDER CATTLE SALE: FRIDAY, OCT. 6 AT 7:15 P.M. SPECIAL FEEDER PIG SALE: SATURDAY, OCT. 28 AT 1:00 P.M.

New Holland Dairy

New Holland Sales Stables
Wednesday, Oct. 4, 1989
Report supplied by auction

REPORTED RECEIPTS OF 105 COWS, 28 HEIFERS, AND 5 BULLS. HEIFER MARKET STRONGER; BETTER COWS STRONGER; BALANCE STEADY.

PA FRESH COWS, 825.00-1025.00, **SPRINGERS** 1050.00-1275.00. **PERRY CO. FRESH COWS,** 750.00-1225.00.

PA FRESH COWS, 910.00-1275.00. **NY FRESH COWS,** 1150.00-1775.00. **PA FRESH COWS,** 890.00-1750.00. **NY FRESH COWS,** 1110.00-1650.00. **HERD OF 21 HEAD, ALL STAGE COWS,** 540.00-1425.00. **HERD OF 15 HEAD, ALL STAGE COWS,** 500.00-975.00.

LOCAL SPRINGING HEIFERS, 790.00-1010.00.

SHORTBRED, 660.00-710.00. **OPEN,** 375.00-470.00.

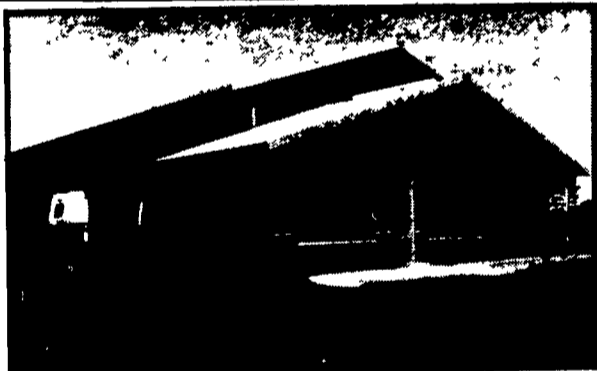
BULLS, 630.00-800.00. **LOCAL COWS,** 680.00-1220.00.

Indiana Livestock

Homer City, Pa.
Thursday, October 5

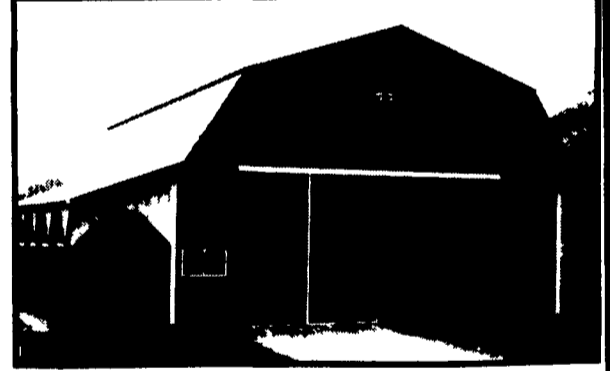
Report supplied by PDA
REPORT NOT AVAILABLE.

WOOD AND STEEL BUILDINGS



TOWN

- Retail Stores
- Light Commercial
- Storage Bldgs.
- Offices & Shops
- Garages
- Mini-Warehouses
- Industrial, Mfg. Facilities



NAZARETH BUILDING SYSTEMS, INC.
Nazareth, PA
PH: 215-837-7700

TRIMARK BUILDING CONTRACTORS, INC.
So. Vineland, NJ
PH: 609-825-1990

AMERICAN BUILDINGS & CONTRACTING
Hawley, PA
PH: 717-226-2959

KNOXVILLE CONSTRUCTION
Knoxville, PA
PH: 814-326-4188

GOMPFF CONSTRUCTION CO., INC.
Street, MD
PH: 301-692-5350

ANCHOR BUILDING SYSTEMS
Deale, MD
PH: 301-867-7233

FOUR COUNTIES CONTRACTOR, INC.
Coalport, PA
PH: 814-672-5751

TRI-COUNTY AGRI-SYSTEMS
Swedesboro, NJ
PH: 609-467-3174

PHIC BUILDERS
Pottstown, PA
PH: 215-323-4070

DOUTT & SNYDER CONTRACTORS
Roaring Springs, PA
PH: 614-224-4303

W.R. MOODY, CONTRACTOR
West Newton, PA
PH: 412-872-6804

MATTSON ENTERPRISES
Burlington, NJ
PH: 609-386-1803

LESTER™

COUNTRY

- Machinery Storage
- Farm Shops
- Hobby Barns
- Dairy Barns
- Livestock Housing
- Horse Arenas
- Open Fronts
- Poultry Housing

For More Information, Contact Your Local LESTER Builder.

BUTLER MFG. CO.

Attn: P.E. Hess
P.O. Box 337, Oxford, PA 19363

- Please send info. on LESTER Buildings
 I'm interested in a LESTER Dealership

Name _____
Address _____
County _____ Zip _____
City _____ State _____
Phone (area code) _____

J.E.N. CONSTRUCTION
Toms River, NJ
PH: 201-240-7488

H.R. WEAVER CONSTRUCTION
Annville, PA
PH: 717-838-3753

FISHER CONSTRUCTION
Wellsville, PA
PH: 717-292-3692

MAJOR BUILDINGS, INC.
Johnstown, PA
PH: 814-535-7716

CLIFFORD E. BOLLINGER ASSOCIATES
Denver, PA
PH: 215-267-6046

REYNOLDS & YELLOT CO., INC.
Reisterstown, MD
PH: 301-833-1804

C & M SALES INC.
Honesdale, PA
PH: 717-253-1612

GEESAMAN-ROCK CONSTRUCTION INC.
Rouzvillle, PA
717-762-1116

ARCTIC INVESTMENT CONTRACTORS
Red Lion, PA
PH: 717-757-2335

O.A. NEWTON & SON CO.
Bridgeville, DE
PH: 302-337-8211

GEORGE W. HOY & SON, INC.
Lock Haven, PA
PH: 717-748-7375

MYERS BUILDING SYSTEMS, INC.
Clearspring, MD
PH: 301-582-4200