

New Holland Horses

New Holland Sales Stables
New Holland, PA
Monday, Oct. 2, 1989

REPORT SUPPLIED BY AUCTION
REGISTERED RECEIPTS OF 355
HEAD OF HORSES, MULES AND
PONIES. MARKET STEADY.

DRIVING HORSES 410.00-2500.00.
RIDING HORSES 375.00-700.00.
LIGHTWEIGHT KILLERS
180.00-400.00.
HEAVYWEIGHT KILLERS
450.00-600.00.
MARES 40.00-110.00.
COLTS 30.00-55.00.
GELDINGS 40.00-110.00.
LARGER PONIES 150.00-290.00.

Isennock Auction

New Park, Pa.
Monday, Oct. 2, 1989

Report supplied by auction

SLAUGHTER COWS: GOOD
47.50-50.00; LOW TO GOOD
45.25-47.00; LOW AND SHELLS 44.50
AND LOWER.
VEAL CALVES: 130-145 LBS.
83.00-89.00; 110-120 LBS. 120.00-144.00;
95-105 LBS. 98.00-136.00; 80-90 LBS.
79.00-116.00; WEAK 93.00 AND
LOWER.
FARM CALVES: 1 AT 290 LBS. 84.00;
140-190 LBS. 64.00-65.00; 100-110 LBS.
94.00-139.00; 80-95 LBS. 90.00-107.00;

75 LBS. AND LOWER 89.00 AND
LOWER.

FEEDER CATTLE: STEERS 425-600
LBS. 71.00-81.00; 865 LBS. 69.75; HEIF-
ERS 625-675 LBS. 65.00-67.50; 720-975
LBS. 48.00-54.00.

BULLS: 1 AT 1675 LBS. 62.75.
SOWS: 330-410 LBS. 26.25-30.00;
425-515 LBS. 33.50-35.00.

BOARS: 1 AT 215 LBS. 31.00.
HOGS: 200-240 LBS. 39.00-42.00.
FEEDER PIGS: 22.00 HEAD.
SHEEP: 130 LBS. 26.00; 85-110 LBS.
50.00-52.00.

GOATS: MEDIUM 47.00-50.00.
HOG BUYING STATION PAID 46.75
ON MONDAY.

Peoria Cattle

Peoria, Illinois

Thursday, October 5, 1989

WEEKLY CATTLE SUMMARY
CATTLE: TRADING ON SLAUGHTER
STEERS FAIRLY ACTIVE AND SLOW
ON HEIFERS SLAUGHTER STEERS
STEADY TO INSTANCES .50 LOWER.
SLAUGHTER HEIFERS STEADY TO
1.00 LOWER. SUPPLY MAINLY
SELECT TO AVERAGE CHOICE
SLAUGHTER STEERS AND HEIFERS.
RECEIPTS THIS WEEK ABOUT 960 AS
COMPARED WITH 1023 A WEEK AGO
AND 1391 A YEAR AGO.

SLAUGHTER STEERS: CHOICE 2-4
1050-1300 LBS. MOSTLY 67.50-69.00
SELECT & CHOICE 2-3 1000-1250 LBS.
64.50-67.50 SELECT 2-3 950-1150 LBS.
62.00-64.50.

SLAUGHTER HEIFERS: CHOICE 2-4
950-1150 LBS. MOSTLY 66.00-68.00
LOAD 1175 LBS. 68.25 SELECT &
CHOICE 2-3 900-1050 LBS. 63.00-66.00
SELECT 2-3 800-1000 LBS. 59.00-63.50.

COWS: BREAKING UTILITY AND
COMMERCIAL 46.50-52.50 CUTTER
AND BONING UTILITY 1-2
45.50-53.00, FEW 57.00 FEW HIGH

DRESSING 54.00-57.00.
BULLS: YG 1-2 1150-2245 LBS.
55.50-66.75, MOSTLY 62.00-65.00.

BINKLEY & HURST BROS. INC.

133 Rothsville Station Rd. • Lititz, PA 17543
Phone 717-626-4705

WE SHIP PARTS DAILY

Store Hours
Mon.-Fri. - 7 AM - 5 PM
Sat. - 7 AM - 11:30 AM
Sun. Closed - Lord's Day

HIGH PRESSURE WASHERS:

David Brown

GEHL

Egger Beaver TRAILERS

SUNFLOWER

Dependable in All Weather
ONLY **39.88**

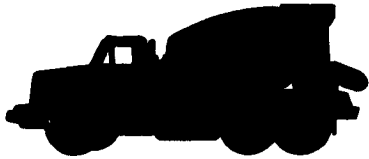
420 Cold Cranking Ampe
67 Min. Reserve Capacity
50 Month Warranty

PARTS VALUE OF THE MONTH

And Much More!

Busy As A Bee?

Your Parts Are Just A Phone Call Away!



COCALICO CONCRETE

Ready Mix Concrete For Every Purpose

SERVICE IS OUR BUSINESS

- Quality Controlled Concrete
- Radio Equipped Fleet
- Mix Uniformity thru Automation

For Prompt
Courteous Service Call
(215) 267-7591
Toll Free **(800) 422-8107**

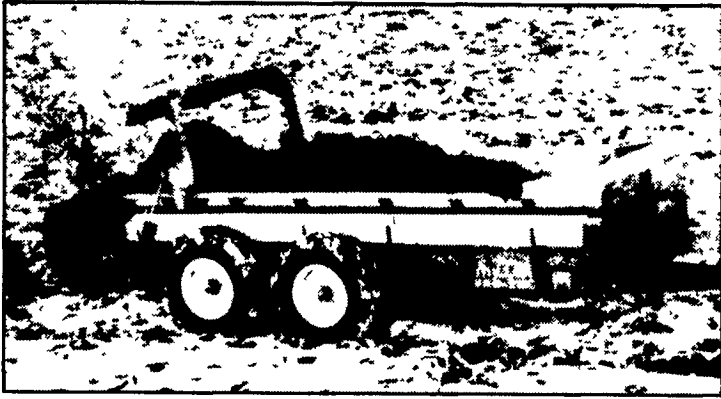
COCALICO CONCRETE



R D 3, DENVER, PA

CRUSHED STONE • READY MIXED CONCRETE • ASPHALT PAVING

MILLER PRO MANURE SPREADERS



Designed for the Professional Farmer

Extra Heavy Duty Design

When you get a Miller Pro Manure Spreader, you get more than just the basics. You get a piece of equipment which has been designed to outlast and out-perform other spreaders on the market. Compare these Miller Pro features

- Solid polyethylene plastic tongue-in-groove board floor and sides (not just poly liners) eliminate freeze-up and will not rot or decay.
- Unitized frame weldment 3/16" crossmembers and wrap-

around steel corners provide extra rigid support.

- Galvanized steel flares and splash guards resist rust and corrosion.
- Durolon bushings last up to 10 times longer than bronze bushings.

Extensive Warranty

- Lifetime warranty on the polyethylene floor and sides.
- Two years on all parts.
- One year on labor.

Contact your local Miller dealer or Miller St. Nazianz for details.

MILLER ST. NAZIANZ

(St NAY-zee-anz)

505 E. Main St. • St Nazianz, WI 54232
414-773-2121 • Fax. 414-773-2649

Represented by **Allied Farm Equipment, Inc.**

6055 Corporate Drive
East Syracuse, NY 13057
Phone. 315-463-5276

3721 Manoning Avenue
Youngstown, OH 44509
Phone 216-799-3231

BLUE CHIP STEERS CONTINUES WINNING TRADITION

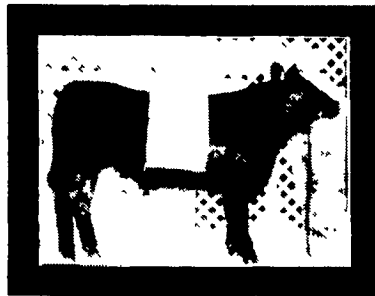
BLUE CHIP CLASSIC Club Calf Sale

Friday, October 13, 1989
7:00 p.m.

FAYETTE COUNTY FAIRGROUNDS
4 miles South of Connellsville, PA — 6 miles North of Uniontown, PA
Along Route 119 near Connellsville Airport

45 STEER CALVES

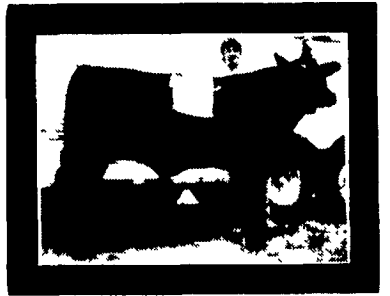
April and May Calves, Maine, Chianina Crosses Out of Power Play, Wheels or Sugar Ray



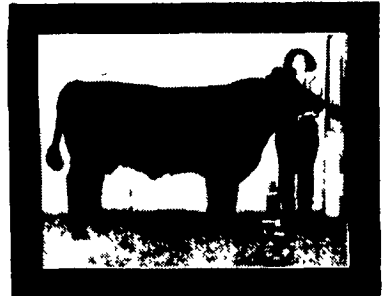
Grand Champion
1989 Fayette Co Fair



Champion Middleweight
1987 PA Farm Show



Grand Champion — Bedford Co Fair
Reserve Champion — Fayette Co Jackpot Show



Grand Champion
1989 Washington Co Fair

1989 WINNERS

- Class Winner
Keystone Classic
- Grand Champion
Fayette County Jackpot Show
- Grand Champion
Fayette County Fair
- Grand Champion
Greene County Fair
- Reserve Champion
Greene County Fair
- Grand Champion
Washington County Fair
- Reserve Champion
Washington County Fair
- Grand Champion
Westmoreland County Fair
- Reserve Division Champion
Somerset County Fair

1988 WINNERS

- Division Champion
Northwest Keystone Classic
- Reserve Grand Champion
Fayette Co. Jackpot Show
- Grand Champion
Fayette Co. Fair
- Reserve Grand Champion
Fayette Co. Fair
- Grand Champion
Fayette Co. Fair Open Show

1988 WINNERS

- Reserve Champion
Fayette Co. Fair Open Show
- Grand Champion
Bedford Co. Fair
- Grand Champion
Washington Co. Fair
- Reserve Grand Champion
Washington Co. Fair
- Reserve Division Champion
Somerset Co. Fair

1988 WINNERS

- Grand Champion
Westmoreland Co. Fair
- Reserve Grand Champion
Westmoreland Co. Fair
- Lightweight Champion
Indiana Co. Fair
- 2 Class Winners
Maryland State Fair
- Reserve Champion Crossbreed

BILL WORK - 412-437-6188
DONALD WITT - 412-455-2489

For More Information Contact:
JEFF LOCKE - 513-828-1487

BOB WORK 412-438-5566
JIM WORK - 304-599-5048