



1967 John Deere 440A Log Skidder
With Winch & ROPS, New Paint,
18.4x26 Tires (Fair).

\$9,500

Wengers, Inc.

251 S. Race St., Myerstown, Pa. 17067
717-866-2135 1-800-451-5240

**RINGO HILL FARMS
Of Potter Co.
Port Allegheny, PA
(814) 544-7385
OR
(215) 346-7340
PRIVATE SALE**

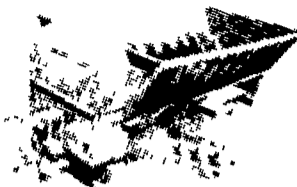
New Equip.

- 16' Tilt Bed Trailer.....\$1,500
Dual Axle Brakes
- 5x10 Tilt Bed Trailer.....\$700
- Post Hole Digger.....\$450
- 7' Scraper Blade.....\$240
Snow Or Dirt
- 5' Bush Hog Mower.....\$550
- Used Bush Hog Mower.....\$350
- 9N Ford.....\$2,000
- MF 30.....\$2,800
- Kubota.....\$7,500
- 2850 Diesel, 4 WD Loader, 900 hrs.

Are You Putting Your Dollars Where The Steel Is?

LUCKNOW TMR MIXER

Heavy Duty Primary
Drive System w/
Heavy Duty 100 &
140 Standard Sized
Chains, Designed
For Easy
Maintenance.



Standard Discharge
Carries Approx-
imately 18" Past
Wheel Hydraulic
Driven w/Double
Unloading Auger.

**The Most Durable And Heaviest Built Mixer
Available Today**

REBUILDING TMR MIXER WAGONS

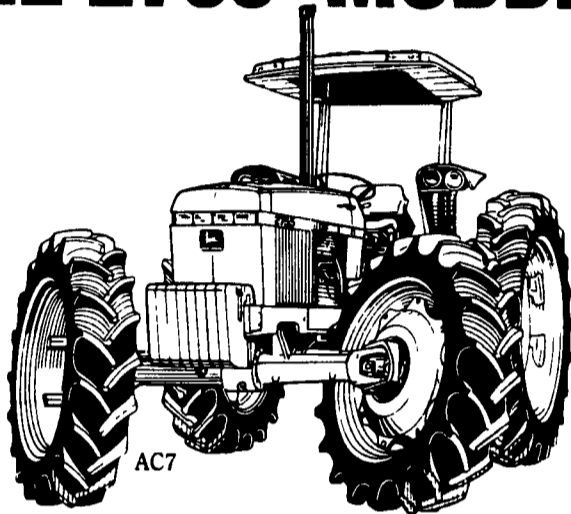
For Pricing, Parts and Service

Call **YOUR FARM NEEDS, INC.**

Robert M. Vanderbosch - Robert J. Barber
Otto, N.Y. • 716-257-9775

**HANDLING EATON ELECTRONIC SCALES
PLATFORM SCALES
USED MIXERS ALSO AVAILABLE**

THE 2755 'MUDDER'



- John Deere's hi-clearance tractor was born to live in mud. And get work done for you where most other tractors can't move.
- It comes with MFWD and big front wheels plus deep-cleated tires for traction. There's plenty of clearance for tall crops. New walk-through deck. Up to 10 percent more fuel efficient.



LEADERSHIP YOU CAN COUNT ON

**USED EQUIPMENT
TRACTORS**

- 1977 Int. 364 diesel, utility tractor w/loader, excellent condition
- JD 4440 row crop tractor w/cab, air, power shift trans., 20.8x38 tires
- Ferguson model T30 utility tractor w/loader & 3 pt. hitch

HAY TOOLS

- (2) JD 1209 mower conditioners
- (2) JD 336 balers w/ejectors
- JD 346 baler w/ejector
- JD 1327 Impeller mower conditioner

COMBINES & HARVESTERS

- JD 7720 combine w/4WD, excellent condition, 643 corn head, 215 flex platform
- NI Uni System, diesel powered w/4WD, 3 row forage harvester unit w/pickup & 3 row picker unit

MISC.

- 45 h.p. Hydra-mac skid steer loader
- (2) JD 7000 six row planters
- 18' trailer w/tandem axles & brakes
- NI tandem axle box spreader w/hydraulic endgate

Norm Shores & Son Tractor

Towanda, PA

717-265-9014

Delivery Available Anywhere

USED TRACTORS

- Ford TW30, cab and air, duals, 3600 hrs., excel.
- Ford TW30, cab, air, 4WD, 20.8x38 tires, dual power, very nice!
- Ford TW20 Factory Cab, 20x38 Tires, Weights, Very Nice
- Ford 8210, cab, air, syncro mesh, 500 hrs., like new
- Ford 8210 cab, air, 4WD, low hours, like new
- Ford 7710 factory, cab, air, dual power, very nice
- Ford 7710, cab, air, synchro-mesh, 3 remotes, 38" tires, 940 hours, excellent
- Ford 7700, 2 WD, 2 remotes, dual power, nice cond.
- Ford 7700 2 WD, cab, air, 2 remotes, dual power, extra nice
- Ford 7700 4WD cab, air, dual power, dual remotes, blue power special, very nice
- Ford 7000D dual remotes, weights, extra nice
- Ford 6610 4WD w/Ford 777F QT loader, 1700 hrs., very nice
- Ford 6600 row crop, dual power
- Ford 5610, 4 WD, 2 remotes, 2 pumps, weights, extra nice
- Ford 5000 1975, Dual Power 1900 Hours, Turbo, NICE
- Ford 5000 Diesel, 1968, 2700 actual hours, excellent
- Ford 5000 1970 Diesel, 8 Spd. Good Condition
- Ford 4610 4 WD w/776 D QT Ldr., excellent, 1600 hrs.
- Ford 4000 Gas 8 spd. PS, good cond.
- Ford 3400 Del. Ind. Loader, 3 Pt., LPTO, 800 Hrs., Excellent
- Ford 2000 Gas w/ldr., power steering, 6 SP w/Ldr.
- Ford 601 Gas 4 spd. Power steering, original JD 4440, 1980 20x38 tires, weights, 3300 hours, QR, very nice
- JD 4430, 1977, air, quad, 3400 actual hours, excellent
- JD 4020 cab, air & heat, 1971 model 38" tires and weights, excellent
- JD 3020 Side console, 2 remotes, weights, new motor, excel.
- JD 3010 Gas, WF, Good Cond.
- JD 2940, 4WD, w/ROPS and enclosure, very nice
- JD 2940 3200 Hours, Nice Cond.
- Oliver 88 gas, clean and original
- IH 1066 cab, air, 20.8x38 tires, 2 remotes, excellent

USED TILLAGE

- JD 1240 4R plateless planter, dry fert., good cond.
- JD 1240 4R plate Planter, double disk openers, insecticide boxes, nice
- White 5400, 6R planter, dry fert., monitor, no-til, disc openers, excellent
- White 543 4R Planter, double disk openers, insecticide boxes, excellent
- MF 9 tooth 3 pt. chisel w/gauge wheels, nice
- Case 7 Tooth, 3 pt. Chisel adjustable gauge wheels, new paint and shovels
- Ford 151, 4x18 Spring Reset Plow, w/coulters, (White 508)
- Oliver 3x16 Cushion trip, semi-mount plow, excellent
- IH 5100, 16 disc, grass seed, fert, planted 25 acres
- IH 370 11' Disk, excellent
- Kewanee 12' cultmulcher, late style, inside wheels, very good
- JD 220 20' centerfold disc, black gang, 20" deepdish blades, excellent
- Glenco 12' field cultivator, 3 pt., w/gauge wheels

USED FORAGE EQUIPMENT

- NH 892 w/824 2 RN electric controls, reconditioned, field ready
- NH 892 w/900 pickup, 824 2 RN corn, electric controls, almost new
- NH 892 w/3 RN auger base pickup, elect. controls, metal alert, very good cond.
- NH 770, 2 RN corn, hay pickup, heavy duty drive, excellent
- Fox Maxi one, self-propelled harvester, diesel, hydro, 4 WD, 3 RN, low profile, works excellent
- Papec, 3 beater wagon w/roof tandem, gear, works good (Dion unit)
- JD 3960, 2 RN, 7' pickup, elect. controls, nice
- Gehl CB600 electric sharpener, 2RN corn, excel.
- Gehl 1000, 2R adjustable corn, wide pickup, elect. controls, very good condition

USED HAY EQUIPMENT

- NH 256 Rake with dolly wheel
- NH 258 Rake w/rubber teeth
- NH 273 w/thrower
- NH 269 w/thrower
- NH 311 w/bale chute, excellent
- NH 310 w/#70 Thrower, very nice
- NH 488 haybine, excellent
- NH 848 Round Baler, 1 yr. old, excellent
- NH 489 Haybine, very nice
- NH 495 12' haybine, good condition
- NH 479 Haybine
- NH 499 12' hydro swing, excellent
- JD 1209 Haybine late model
- JD 640 rake w/dolly wheel
- Vicon Disc Mower Conditioner, Excellent
- NH 847 round baler, excellent

PICKERS

- NI 323, 1R
- JD 300 w/3RN head, excellent

USED HARVESTER HEADS

- NH 880W Hay Head
- NH 890 2 RW Corn
- NH 770 corn head
- Gehl 2R Snapper head
- JD 3RN corn head
- JD 2RW w/clutch
- JD 2RN without clutch
- NH 770W hay head
- NH 717 2RN corn, excellent

CONSTRUCTION EQUIPMENT

- Ford 420 w/loader
- JD 555 A Loader, crawler loader w/ripper, ROPS, Excel.
- JD 450C 6 Way Dozer

MISCELLANEOUS

- JD 146 Loader with a deluxe valve, excellent
- Several Used Hay Wagons
- Several Used Gravity Boxes
- Ford 778 B loader fits 7700 or 7710

Mon.-Fri. 7:30-5;
Sat. 7:30-12
Other hours by appointment

HONDA

STIHL
THE WORLD'S LEADING CHAINSAW BRAND

**OXFORD
GREENLINE**

1100 Limestone Rd., Oxford, PA
215-932-2753

