

**Southeast And
Central Virginia
Area Livestock
Summary**

Smithfield And Southside
(Blackstone), Va.

Wednesday, October 4, 1989

ALL TRENDS COMPARED TO LAST WEDNESDAY SOUTHSIDE CATTLE SOLD ON OUT WEIGHTS.

SLAUGHTER HOGS 165 HEAD - BARROWS AND GILTS 1.50 LOWER. SLAUGHTER SOWS 75 CENT TO 1.00 HIGHER. BOARS 1.00-1.50 HIGHER. SOWS US 1-3 300-500 LBS 36.25-36.75 500 LBS & OVER 38.25-38.95 BOARS 34.00-34.60; SMOOTH LIGHT BOARS 38.00.

SLAUGHTER CATTLE 100 HEAD - NO TRENDS REPORTED.

SLAUGHTER COWS 86 HEAD CUTTER & BNG.UT. 1-3 44.00-51.00 BRKG.UT. & COMM. 2-4 45.00-51.25 1 AT 53.00 CANNER & LOW CUTTER 1-2 40.00-45.00.

SLAUGHTER BULLS 14 HEAD; 1-2 900-1300 LBS 58.00-63.00 1-2 1300-1600 LBS 56.50-61.75 1-2 1600 LBS & OVER 60.00-60.75.

FEEDER CATTLE 256 HEAD - NO TRENDS REPORTED. STEERS; MED.&LARGE 2 400-500 86.00-88.00 500-600 82.00-85.50 600-700 77.00-78.00 700-800 73.00-75.00.

HEIFERS; MEDIUM 1 SMALL 1 MED.&LARGE 2 300-400 76.00-77.00 66.00 74.50-77.00 400-500 75.00-77.00 60.00-70.00 66.00-74.00 500-600 73.00-77.50 58.50-67.00 65.00-66.00 600-700 --- 60.00-62.50 --- 700-800 65.50 --- FEEDER BULLS; MED. 1 SMALL 1 MED.&LARGE 2 200-300 LBS 95.00-106.00 --- 85.00-104.00 300-500 LBS 70.00-87.50 66.00-84.00 74.00-87.00 500-700 LBS 59.00-65.00 57.00-73.50 ---

BABY CALVES RETURNED TO FARMS 28 HEAD NEWBORN TO 4 WK OLD 25.00-70.00 PER HEAD. OVER 100 LBS 85.00-100.00 PER CWT.

**Four States
Livestock**

Hagerstown, Md.

Wednesday, Oct. 4, 1989

Report supplied by Auction

COWS: UTILITY 48.00-52.50; HIGH DRESSING 53.00-57.00; CANNERS 45.00-48.00; SHELLY 44.00 DOWN.

BULLS: YG#1 60.00-62.25; YG #2 53.00-59.00.

FED STEERS: STANDARD 56.00-59.25.

FED HEIFERS: SELECT 59.00-62.50. VEAL CALVES: 150-250 LBS. GOOD 80.00-90.00; STANDARD 70.00-80.00; CULLS 85-120 LBS. 90.00-101.00; 50-80 LBS. 70.00-90.00; WEAK AND ROUGH 65.00 DOWN; FARM CALVES, HOLSTEIN BULLS FEW UP TO 169.00; #1 90-125 LBS. 140.00-160.00; #2 85-110 LBS. 100.00-135.00; HOLSTEIN HEIFERS 90-120 LBS. 120.00-150.00; BEEF X BULLS UP TO 111.00.

BUTCHER HOGS: US #1 AND 3, 1275 LB. AT 43.75.

SOWS: 300-500 LBS. 35.00-37.75; 500-700 LBS. 36.00-39.00.

BOARS: GOOD 32.00-33.25; THIN OR ROUGH 25.00-30.00.

STOCK CATTLE: STEERS 200-300 LBS. 89.00-97.00; 300-600 LBS. 70.00-88.00; 600-700 LBS. 60.00-74.00; 700-900 LBS. 60.00-72.00; 900-1050 LBS. 57.00-67.00.

HEIFERS: 300-500 LBS. 65.00-75.00; 500-700 LBS. 60.00-70.00; 700-850 LBS. 55.00-62.00.

BULLS: 400-600 LBS. 60.00-70.00. DAIRY REPLACEMENTS: SPRINGERS UP TO 900.00; FRESH 700.00-800.00; JERSEYS 350.00-410.00.

LAMBS: 80-110 LBS. HIGH CHOICE TO PRIME 60.00-65.00; GOOD 60-80 LBS. 55.00-62.00.

SHEEP: 24.00-29.00; YEARLINGS 30.00-38.00.

GOATS: LARGE 52.00-64.00; MEDIUM 30.00-50.00; SMALL 12.00-25.00.

PIGS AND SHOATS: BY THE HEAD, 15-30 LBS. 10.00-18.00; 30-50 LBS. 19.00-28.00; 50-70 LBS. 25.00-32.00; BY THE POUND, 160-190 LBS. 37.00-40.50; STOCK BOARS 215-260 LBS. 33.00-35.25.

NOTE: NEXT WED., OCT. 11, SPECIAL FEEDER CATTLE SALE. ALREADY PROMISED 4 FANCY SIMMENTAL X STEERS 400-600 LBS., GOOD ENOUGH FOR 4-H PROJECTS; ALSO 17 MO. OLD REGIS. HOLSTEIN BULL Sired BY MANDINGO, WRIGHTS APPROX. 1000 LBS.

FED HEIFERS: NO SELECT OR CHOICE OFFERED, A FEW COMMERCIAL 51.00-53.00.

VEAL CALVES: 1 CHOICE 195 LBS. AT 87.00; GOOD 70.00-80.00; STANDARD 65.00-75.00; CULLS 85-120 LBS. 85.00-94.00; 50-80 LBS. 75.00-85.00; WEAK AND ROUGH 68.00 DOWN.

FARM CALVES: HOLSTEIN BULLS #1 90-120 LBS. 125.00-151.00; #2 90-110 LBS. 100.00-125.00; HOLSTEIN HEIFERS 90-120 LBS. 100.00-130.00.

BUTCHER HOGS: US #1 AND 3 215-260 LBS. TO 46.50.

SOWS: NONE.
BOARS: TO 32.00.
STOCK CATTLE, STEERS: 300-500 LBS. 73.00-80.00; 500-700 LBS. 64.00-77.00.
HEIFERS: SMALL AND MEDIUM FRAME 300-500 LBS. 65.00-72.00; 500-700 LBS. 60.00-70.00.
BULLS: 300 LBS. TO 78.00.
SHEEP: FEW OFFERED.
PIGS AND SHOATS, BY THE HEAD: 20-30 LBS. TO 21.00; 40-50 LBS. TO 24.00; 1 LOT 70 LBS. AT 37.00.

**Frederick Livestock
Auction**

Frederick, Md.

Monday, Oct. 2, 1989

Report Supplied by Auction

SLAUGHTER COWS: UTILITY 47.00-50.25; CANNERS 45.00-48.00; SHELLY 45.00 DOWN.

BULLS: YG#1 TO 63.25; YG#2 54.00-58.50.

FED STEERS: NONE OFFERED.

Leesport Farmers' Market, Inc.

Leesport, Pa. (215) 926-1307

**SPECIAL
FEEDER CATTLE SALE**

• Consignments Welcome

**FRIDAY, OCT. 27, 1989
7:30 P.M. Bill Weist**

**STORAGE
TRAILERS**

For Rent

- ★ Delivered To Your Location
- ★ Safe And Inexpensive Storage

KEENS

SERVICES INC.



717-626-5420

850 Keens Road, Lititz, PA 17543

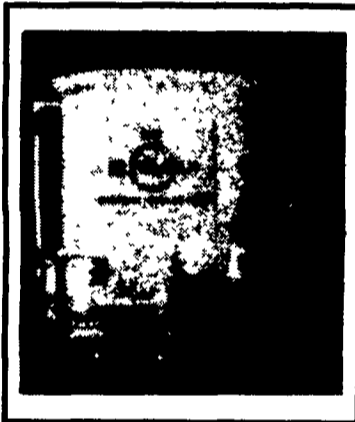
MILLER DIESEL INC.

DIESEL FUEL INJECTION & TURBO CHARGER SPECIALIST
6030 Jonestown Road
Harrisburg, PA 17112
Phone 717-545-5931 - Interstate 81 Exit 26

"GLYCLEAN"

ANTI-FREEZE RECYCLING SYSTEM

- RESTORES USED ANTI-FREEZE TO BETTER THAN ORIGINAL CONDITION
- REDUCES HAZARDOUS WASTE
- \$\$\$ BIG SAVINGS \$\$\$



FOR COMPLETE INFORMATION, WRITE OR CALL



2020 Horseshoe Rd
Lancaster, PA 17601
Phone 717-397-0035

**Protect Your Alfalfa
This Winter
By Fall Topdressing**

Your Choice Of
Fluid Fertilizer

3-10-30

or

0-0-40

**POTASH
&**

Princep Cal 90/Alfalfa Label

Also This Fall Is The Time For
Soil Testing. Just Contact Us At

717-397-0035

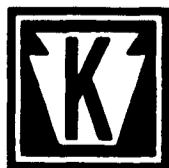


BEEF FEEDS

TO FIT YOUR NEEDS

- **KM Beef Receiver Medicated**
Feed To Cattle For 14 Days After Arrival
- **KM Steer 32% Concentrate**
Feed 2 Pounds Per Head Per Day
- **KM Beef 34% Concentrate**
Contains All Natural Protein
Feed 2 Pounds Per Head Per Day
- **KM Beef 40% Concentrate**
Feed 1 1/2 Pounds Per Head Per Day
- **KM Cattle 40% Concentrate**
Feed 1 1/2 Pounds Per Head Per Day
- **KM Beef Grower Base Mix**
Feed 1/4 Pound Per Head Per Day
- **KM Beef Finisher Base Mix**
Feed 1/2 Pound Per Head Per Day
- **Purina Special Feedlot 40 Concentrate**

* Bovatec and Rumensin options available*



KEYSTONE MILLS

Serving Agriculture Since 1880

R.D. 3
Ephrata, PA 17522
(717) 354-4616

1975 Route 336
Romulus, NY 14541
(315) 549-2578