

West Germans Exchange Ideas, Friendship

(Continued from Page A20)

Delaware, New York, and Pennsylvania. The West Germans were amazed when they visited Wen-Crest Farms and discovered the 95 Holstein rolling herd average is 19,700 pounds. West Germany has a quota system, which offers no incentive for the farmers to increase their herd average. The West German's average herd varies from six to 40 cows. They use stauchion barns and no parlors or free stalls.

Glenn and Jean Wenger and Steven and Bonnie Wenger farm 500 acres on Wen-Crest Farms. In addition to their Holsteins and crop farming they also raise 210,000 turkeys. The visitors remarked that they grow turkeys on a much smaller scale, but they raise toms to 30 to 40 pounds compared with

this area's average of 15-pound hens.

While many farmers find visitors an inconvenience, those who participated in the tour expressed their pleasure in the exchange.

Leon Arnold said, "It was fantastic. The tour just got over too quickly."

Shirley Krall, who instigated the visit in the Lebanon area, remarked, "The tour gave us an incentive to get our farm nice. We learned as much from them as they did from us."

With hugs, smiles and handshakes the visitors expressed their enthusiasm for the hospitality and the beauty of the area.

"These tours promote friendship and positive public relations," Jeffrey Werner, LCGA president remarked. "We hope to do it again."

Steam-O-Rama Scheduled

WINDSOR (York Co.) — The Early American Steam Engine Society is holding the 32nd annual Steam-O-Rama on September 28 through October 1 near Windsor, Pa.

The four-day event will include an exhibit area with vehicles such as steam engines, calliopes, antique tractors, rumely oil pulls, balers, and threshers. Also on the grounds will be a flea market, antique cars, a black smith shop and an operating saw mill.

On Friday, September 29, Country Image will provide musical entertainment from 7:00 p.m. to 11:00 p.m. Appearing on Saturday will be Sunny Lee & The

Countrymen at the same time.

There will be a drawing for a 1941 Allis Chalmers B on October 1 at 4:00 p.m. and daily drawings for five meal tickets each day.

There will plenty to eat including sausage sandwiches and Ponhaus cooking.

To get to the event, take I-83 to Exit 7; take Route 124 east for 7.5 miles to Manor Road, turn right onto Manor Road and take it 1.3 miles to the show grounds.

For moer information, contact Sue Knaub at 717/244-2912; Donald Anderson at 717/244-2039; Gloria Peters at 717/244-2954; or Glenn Wallick at 717/845-4761.



To find ways to preserve the family farm, West German farmers toured three farms in Lebanon County.



During the farm tour at Tom and Shirley Krall's dairy, Brandon Bollinger, 2, found a friend, Ted the dog, to take a rest with him.

BROCK—the surprising bin that won't 'surprise' you later



From the leader in feed and grain storage technology

It's no surprise—people want to buy bins that work. At BROCK, we've earned a reputation as the leader in feed and grain storage technology. BROCK has many years of experience in designing and offering innovation and high quality products that work better than any other brand and with none of the unpleasant "surprises" cheap bins can hide. In fact, BROCK's high quality bins will likely cost you less in the long run, plus offer you a lot of pleasant surprises like our exclusive, simple-to-use SHUR-LOCK® Lid Opener and unique user-friendly ladder system.

See your BROCK dealer now for a quote on feed or grain storage bins and genuine FLEX-AUGER® Conveying Systems.



BROCK
Make BROCK your first choice

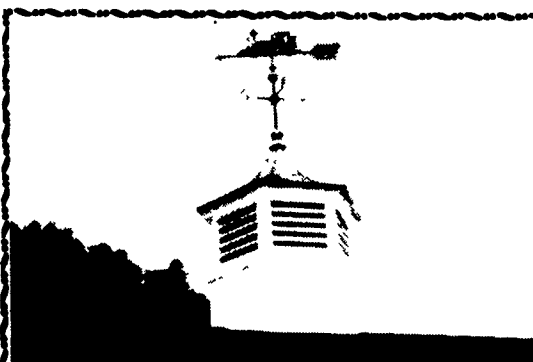
SEE FARMER BOY AG NOW!

Your Authorized BROCK Distributor

Swine & Poultry Systems Specialists

FARMER BOY AG.

410 E. LINCOLN AVE. MYERSTOWN, PA 17067 PH 717-866-7565
Hours: M-F 7:00-5:00; Sat. 7:30-11:30 24 Hour Service We Ship UPS



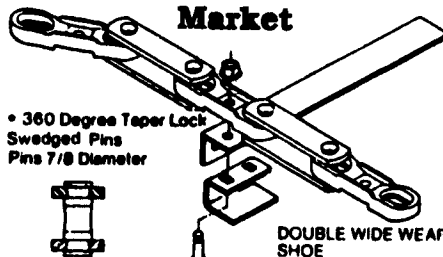
Country Cupola

Cupola's & Weathervanes
"Specializing In Copper-Roof Cupolas"
Large Selection Of Styles & Sizes
Give Your Property A Touch
Of Class

Wholesale - Retail
(717) 733-7809
Ask For Ken

SPECIAL SALE

• Heaviest Chain On The Market

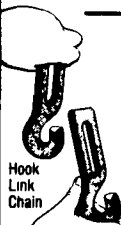


• 360 Degree Taper Lock Swaged Pins Pins 7/8 Diameter

DOUBLE WIDE WEAR SHOE

As Low As
\$6.50 per ft.

All types of chain available
FULL LINE BARN EQUIP.
SALES & SERVICE
1820 Millcreek Road, York, PA 17404
(717) 292-6668 or 764-0494



Underwriters Laboratories
Approved Master Labeled
Lightning Rod Systems

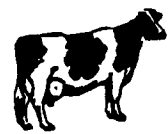


TEATES LIGHTNING PROTECTION

L.P.I. Certified Master Installer
Farm, Residential and Commercial

TIM SHAFFER
(717) 374-7090

P.O. Box 234
Freeburg, PA 17827



SUPER DAIRY #155



Choice of Dairyman's Stress Pack

Put **SUPER DAIRY** beside any other product row for row for 100 days, then you will see why it's *choice*.

ADVANTAGES: No Milk Throw-Away, No Drug Residue, Palatability, Top Dress or Grist Mix. Mfg. by H.F.S., less cost

IMMU-WHEY

265 cc Bottle

Natural Health Aid To Prevent Mastitis

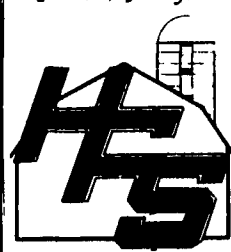


CLEAN COW

265 cc Bottle

For Post Calving Uterine Health

Our Products Are Known For Results. Remember, You Get More For Your Dollar At H.F.S.



HESS FARM SUPPLY INC.

R.D. 2,
New Holland, PA 17557
Phone: 717-354-7972