

# Hand Signals

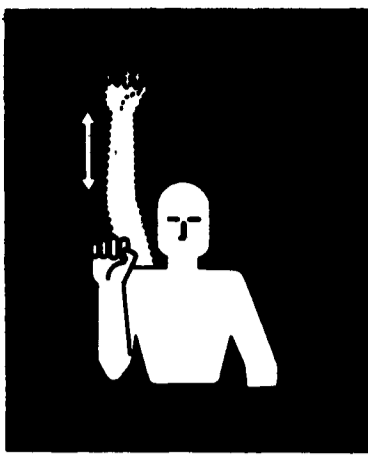
(Continued from Page A10)

You probably use more signals than you realize. However, uniformity is the key point and reason enough to get the farm or ranch crew together for a training session.

One person should study the hand signals ahead of time so that he/she can demonstrate them accurately and explain the circumstances when they are to be used. Each person, including family members only infrequently involved, should have the opportunity to practice a particular signal before going on to a new one.

After the initial orientation, take every opportunity to use the signals under real working conditions. If anyone is unsure, sloppy in execution or has just plain forgotten them, an on-the-spot review is needed in order to have the whole crew working as a team.

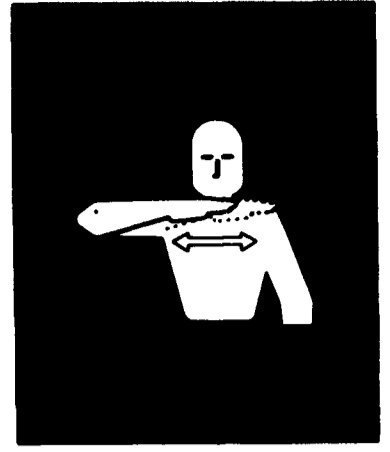
Encourage neighbors to join you in use of the hand signals during the times when cooperative work is being done. This is National Farm Safety Week, and anything you can do to protect yourself, your family and your farm workers, will be worth the effort.



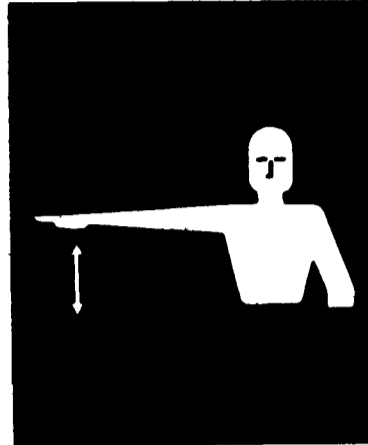
**SPEED IT UP-INCREASE SPEED**—Fist upward to the full extent of the arm and back to the shoulder repeatedly.



**STOP**—Raise hand upward to the full extent of the arm, palm to the front. Hold signal until understood.



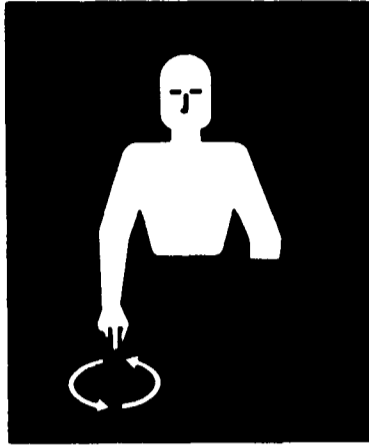
**STOP THE ENGINE**—Draw right hand across the neck in a "throat cutting" action from left to right.



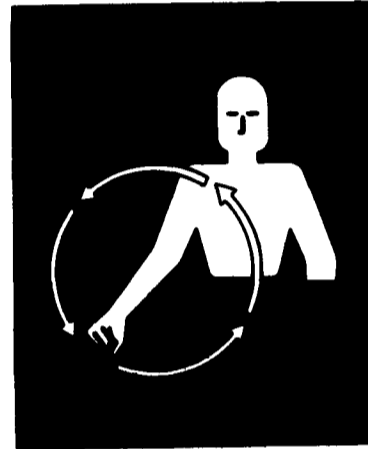
**SLOW IT DOWN-DECREASE SPEED**—Arm horizontal to the side, palm down. Wave arm downward to 45° repeatedly.



**RAISE EQUIPMENT**—Make a circular motion with either hand at head level.



**LOWER EQUIPMENT**—Make a circular motion with either hand pointing to the ground.



**START THE ENGINE**—Simulate cranking of vehicle by moving arm in a circular motion at waist level.



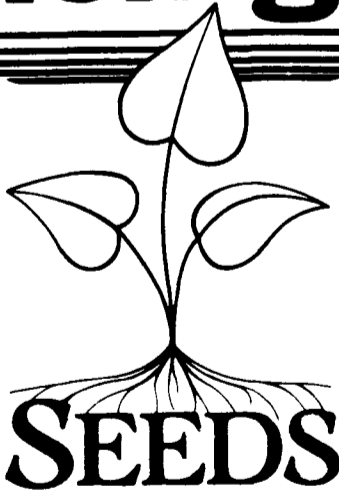
- Keep children away from danger all day, every day...
- Equip tractors with rollover protection and keep all machinery guards in place...
- Always follow label directions when applying pesticides and using chemical products...
- Please work, drive, play and live each day with care and concern for your safety and that of your family and fellow citizens.

National Safety Council and Farm and Industrial Equipment Institute.

## MILK. IT'S FITNESS YOU CAN DRINK.

Now Is The Time To Consider

# Chemgro



**High Quality, High Producing  
Seed Corn For Less Cost  
GUARANTEED PERFORMANCE  
Take The Chemgro Challenge**

I am interested in (Please  )

- 1989 Yield Data
- Dealership

**CHEMGRO**

Box 218  
East Petersburg, PA 17520

(717) 569-3296 1-800-346-4769 (GROW)

- Guaranteed Performance
- More Information

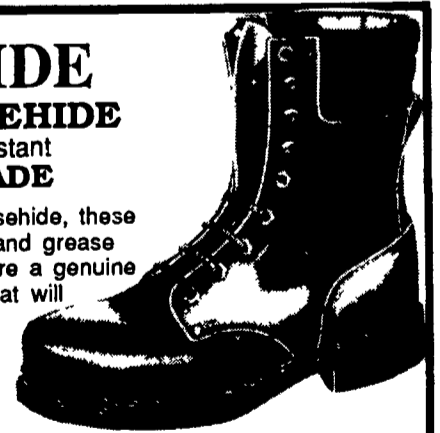
**WAYNE WALBERT**

RD 2, Box 404  
Delmar, DE 19940

(302) 846-9510

## HORSEHIDE GENUINE HORSEHIDE Barnyard Acid Resistant AMERICAN MADE

Made of tough, long wearing horsehide, these shoes stand manure, silage, oil and grease better than cowhide. Shoes feature a genuine Goodyear welt, nitro cork sole that will not track, steel shank, padded collar, cushion insole and arch support. Ideal for barn use. Sizes 7-13 including 1/2 sizes. 1st quality. Our experience shows that horsehide outlasts good cowhide by 50% or more for farm use.



STYLE	WIDTH	PRICE	SIZE	TOTAL
6 Inch	D, EE, EEE	\$52.95		
8 Inch	D, EE, EEE	\$54.95		
8" Steel Toe	EE Only	\$59.95		
8" Insulated,	snow grip sole	\$62.95		

We ship in 24 hours  
We pay shipping

NY Add 7% Tax  
Grand Total

**W-R SUPPLY CO.**  
Lake Crane Rd.  
Box 388  
Earlville, N.Y. 13332  
1-800-533-1675

CUSTOMER \_\_\_\_\_  
ADDRESS \_\_\_\_\_  
TOWN \_\_\_\_\_  
STATE \_\_\_\_\_ ZIP \_\_\_\_\_

VISA — Phone orders shipped same day — Mastercard