

Lebanon Valley Livestock Auction

Fredericksburg, PA
September 12, 1989

CATTLE 158...PDA...Compared with last Tuesday's market: Slaughter cows unevenly steady. One Choice slaughter steer 69.25, few Select 65.00-69.00; two Choice Holsteins 66.50&66.75, few Select 61.75-65, few Standard 58.00-63.00, one Utility 57.00. Few Choice sl. heifers 63.75-67.25, few Select 61.75-64.00, one Holstein 54.25, one Standard 53.75. Breaking Utility & Commercial sl. cows 50.75-53.50, few 57.00, Cutter & Boning Utility 48.75-53.75, few to 55.25, Canner & Low Cutter 44.50-49.50, Shells down to 33.00. One Select Holstein sl. bullocks 60.25, two Standard 54.75&56.00. Few Yield Grade No. 1, 1450/1560 lbs. sl. bulls 58.00-62.75. Feeder Cattle: Large Frame No. 2, 445/700 lbs. Holstein steers 56.00-64.00.

CALVES 274...Vealers strong to 10.00 higher. Two Choice 93.00-95.00, few 285/375 lbs. 87.00-89.00, few Good 74.00-86.00, Standard & Good 80/110 lbs. 90.00-96.00, 70/75 lbs. 75.00-88.00, few Utility 50/70 lbs. 50.00-76.00. Farm Calves: Hol. Bulls No. 1, 85/120 lbs. 100.00-147, few down to 95.00, No. 2, 80/105 lbs. 85.00-125.00; Hol. Heifers 80/120 lbs. 95.00-158.00. Beef cross 85/135 lbs. bulls & heifers 96.00-101.00.

HOGS 256... Supply includes 46 sows ...Barrows and gilts weak to 1.00 lower. US No. 1-2 215/235 lbs. 42.00-42.25, 1-3 210/230 lbs. 41.75-42.00, lot 2-3 218 lbs. 41.00, 1-3 135/155 lbs. 30.75-31.50. Sows .50 to 1.00 lower. US No. 1-3 285/620 lbs. sows 33.50-35.50, few 44.50, Medium 285/490 lbs. 28.50-33.75. Boars 30.00-33.25.

FEEDER PIGS 9...Few US No. 1-3 27/45 lbs. feeder pigs 46.00-50.00 --- per

hundredweight.

SHEEP 5...Few Choice 105/130 lbs. spring slaughter lambs 54.00-57.00, one Good 70 lbs. 54.00.

GOATS 1...Small Kid 22.00 - per head.

Keister's Middleburg Auction

Middleburg, PA
September 12, 1989

CATTLE 473...PDA...Choice 975/1400 lbs. slaughter steers 67.85-72.85, one 73.75, few down to 66.00, Select 63.00-66.00; Choice holsteins 64.00-67.60, one 71.75, few Select 63.00-65, few Standard 58.00-60.00. Choice sl. heifers 64.25-69.25, couple 69.75, one 72.75, few Select 60.00-63.00. Breaking Utility & Commercial sl. cows 49.00-53.50, Cutter & Boning Utility 48.00-54.50, Canner & low Cutter 44.00-47.75, few to 55.00, Shells down to 37.00. Few Yield Grade No. 1, 1100/1775 lbs. sl. bulls 57.00-68.00, few No. 2, 715/1180 lbs. 50.00-57.25. FEEDER CATTLE: Few Medium Frame No. 1, 450/850 lbs. steers 66.00-77.00, one 86.00, few Large #2, 450/725 lbs. 64.00-73.00. Few Medium & Large Frame No. 1, 450/625 lbs. heifers 63.00-74.00.

CALVES 238...Few Choice vealers 87.00-95.00, Standard and Good 70/100 lbs. 72.00-84.00, couple 90.00, Utility 60/85 lbs. 65.00-75.00. Farm Calves: Holstein Bulls No. 1, 90/120 lbs. 98.00-148.00, No. 2, 90/120 lbs. 90.00-120.00; Hol. Heifers 90/120 lbs. 90.00-138.00.

HOGS 381...US No. 1, 220/245 lbs. barrows and gilts 45.50-46.50, 1-2 220/240 lbs. 44.50-45.50, 1-3 200/250 lbs. 43.00-44.00, 2-3 190/270 lbs. 38.00-43.00.

US No. 1-3 300/650 lbs. sows 33.00-35.50, few light weights 42.00, 2-3 300/600 lbs. 25.00-33.00. Boars 31.00-32.50.

FEEDER PIGS 320...US No. 1-3 20/35 lbs. feeder pigs 16.00-32.00, 40/65 lbs. 27.00-39.00, lot 100 lbs. 46.00 --- all per head.

SHEEP 62...Choice 55/110 lbs. spring slaughter lambs 59.00-68.00. Slaughter sheep 16.00-26.00.

GOATS 83...Large 45.00-90.00, one 115.00, Medium 30.00-40.00, Small 20.00-27.00 --- per head.

New Wilmington Livestock Auction

N. Wilmington, PA
September 11, 1989

CATTLE 350...PDA...Few Select & Choice slaughter steers 64.50-67.00, one 70.00, few Select 63.50-65.75, few Standard 58.75-61.25, Utility 53.00-58.25. Choice sl. heifers 65.50-68.75, few Standard 54.25-60.00. Breaking Utility & Commercial sl. cows 50.00-55.00, few 55.50-57.75, low yielding down to 47.00, Cutter & Boning Utility 47.50-52.50, Canner & Low Cutter 40.00-48.00, Shells down to 35.00. One Standard sl. bullock 61.00. Yield Grade No. 1, 1245/2155 lbs. sl. bulls 56.50-61.00, couple 62.75&65, few No. 2, 875/1265 lbs. 55.00-55.50. Feeder Cattle: Medium & Large Frame No. 1, 300/450 lbs. steers 80.00-93.00, few 100.00, few Med. & Large 340/570 lbs. 62.00-72.50. Medium & Large Frame No. 1, 300/500 lbs. heifers 74.00-83.00, 515/855 lbs. 58.00-69.00, Medium #2, 440/765 lbs. 51.50-60.00.

CALVES 310...Choice vealers 110.00-122.00, few Good 88.00-100.00, Standard & Good 90/120 lbs. 80.00-89.00, 60/85 lbs. 70.00-85.00, lot Utility 53 lbs. 63.00, few 45/60 lbs. 25.00-57.50. Farm Calves: Hol. Bulls 90/135 lbs. 100.00-144.00, No. 2 down to 80.00, 80/85 lbs. 80.00-88.00; Hol. Heifers 80/140 lbs. 85.00-140.00. Beef cross 80/140 lbs. bulls & heifers 86.00-135.00.

HOGS 503...US No. 1-2 225/255 lbs. barrows and gilts 42.00-42.50, 1-3 215/265 lbs. 40.60-42.00, lot 2-3 285 lbs. 39.25, 1-3

200/215 lbs. 36.10-41.00, lot 180 lbs. 35.50. US No. 1-3 340/600 lbs. sows 32.00-37.50. Boars 23.00-34.00.

FEEDER PIGS 33...US No. 1-3 15/30 lbs. feeder pigs 12.00-16.00, 30/45 lbs. 16.00-27.00, 60/90 lbs. 24.00-32.00 --- all per head.

SHEEP 157...High Choice & Prime 85/110 lbs. spring sl. lambs 62.00-70.00, few 70/80 lbs. 70.00-76.00, Choice 75/110 lbs. 56.00-64.00; Good & Choice 45/80 lbs. feeder lambs 49.00-59.00. Slaughter ewes 17.00-27.00.

GOATS 11...Few Large 39.00-46.00, few Medium 30.00-33.00, few Small 12.00-15.00 --- all per head.

Four States Livestock

Hagerstown, Md.

Wednesday, Sept. 13, 1989
Report supplied by Auction

COWS: UTILITY 48.00-52.00; HIGH DRESSING 52.00-55.00; CANNERS 45.00-48.50; SHELLY 44.00 DOWN.

BULLS: YG#2 55.00-58.50. FED STEERS: FEW LOW CHOICE UP TO 65.00 AND CHOICE HOLSTEINS UP TO 63.00.

FED HEIFERS: COMMERCIAL UP TO 56.50.

VEAL CALVES: CHOICE 89.00-96.00; GOOD 80.00-89.00; CULLS 85-120 LBS. 88.00-103.00; 50-80 LBS. 72.00-88.00; WEAK AND ROUGH 70.00 DOWN; FARM CALVES, HOLSTEIN BULLS #1 90-120 LBS. 125.00-154.00; #2 85-110 LBS. 110.00-140.00; HOLSTEIN HEIFERS UP TO 148.00; BEEF X BULLS 110.00-130.00.

BUTCHER HOGS: US #1 AND 3 215-260 LBS. 41.00-42.00; SOWS 300-650 LBS. #1 AND 2 35.00-36.25; #1 AND 3 33.00-35.00.

STOCK CATTLE: STEERS 300-500 LBS. 82.00-97.00; 500-700 LBS. 74.00-86.00; 700-800 LBS. 69.00-78.00; 800-1000 LBS. 60.00-71.00.

HEIFERS: 300-500 LBS. 67.00-78.00; 500-700 LBS. 63.00-78.00; 700-900 LBS. 59.00-70.00.

BULLS: 300-500 LBS. 76.00-88.00; 500-700 LBS. 69.00-78.00; 800-975 LBS.

56.00-66.00; 1000-1100 LBS. 57.00-59.00.

DAIRY COWS: 425.00-785.00.

BEEF TYPE STOCK COWS: BY THE POUND, 900-1200 LBS. 53.00-61.00.

LAMBS: CHOICE 80-110 LBS. 58.00-63.50.

SHEEP: UP TO 28.00.

GOATS: MEDIUM TO LARGE 49.00-57.00.

PIGS AND SHOATS: BY THE HEAD, 15-30 LBS. 13.00-25.00; 30-50 LBS. UP TO 26.50; 50-75 LBS. 29.00-39.00; BY THE POUND, 8 HEAD, 190 LBS. AT 38.00.

STOCK BOARS: 210-250 LBS. UP TO 32.25.

NOTE: NEXT WED., SEPT. 20, SPECIAL DAIRY CONSIGNMENT SALE. SEVERAL LARGE SPRINGING HEIFERS FROM DAMS PRODUCING 25,000 LBS. MILK.

Valley Livestock

Athens, Pa.

Monday, Sept. 11, 1989

Report supplied by auction
HOLSTEIN HEIFER CALVES TO 127.50.

VEAL CALVES TO 90.00.

VEALER BULL CALVES TO 157.50.

SLAUGHTER CALVES 75.00-96.00.

GRASSERS & FEEDERS 45.00-70.00.

LAMBS 54.00-68.00.

SHEEP 15.00-35.00.

HOGS 200 TO 250 LBS. 38.00-44.00.

SOWS 22.00-34.00.

BOARS 23.00-28.00.

PIGS EACH 12.00-28.00.

HEIFERS 50.00-59.00.

HOLSTEIN STEERS 52.00-58.00.

FEEDER STEERS 52.50-88.00.

BULLS 52.00-58.00.

COWS GOOD 48.00-53.00, top 55.00.

COWS MEDIUM 46.00-48.00.

COWS POOR OR SMALL 32.00-45.00.

CATTLE MARKET HIGHER.

CALF MARKET HIGHER.

GOATS TO 62.50.

HORSES, SMALL, TO 310.00.

PONIES, TO 60.00.

MILLER DIESEL INC.

DIESEL FUEL INJECTION & TURBO CHARGER SPECIALIST

6030 Jonestown Road

Harriburg, PA 17112

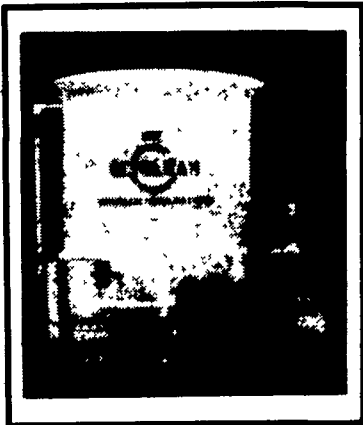
Phone 717-545-5931 --- Interstate 81 Exit 26

"GLYCLEAN"

ANTI-FREEZE RECYCLING SYSTEM

- RESTORES USED ANTI-FREEZE TO BETTER THAN ORIGINAL CONDITION
- REDUCES HAZARDOUS WASTE
- \$\$\$ BIG SAVINGS \$\$\$

FOR COMPLETE INFORMATION, WRITE OR CALL



HYTEST



Hytest has arrived in Pennsylvania!

Hytest gives you the best line-up of seed products in Pennsylvania. Choose Hytest Hybrid Seed Corn. 11 new hybrids... 2 winning years at NCGA Competitions... 3 national and 20 state winners.

Allstar Alfalfa is Hytest Hardy, a new generation alfalfa adapted to handle the rigors of the Northeast.

There's a winner in the Hytest line-up for you. Call us at 1-800-759-SEED for our complete line-up information package.

580 Fulton Street, P.O. Box 368LF3,

Buffalo, NY 14240

All products subject to Stanford Seed's warranty limitations.



KEYSTONE MILLS

"MAXI-SIL"

*Proven By Research
And Local Farm
Results
To Provide:*



- Faster fermentation...Promotes rapid drop in pH, which causes natural lactic acid producing organisms to grow at a higher rate.
- Less spoilage... Silage on exposed face of trench or pit silos remains palatable over a longer period of time.
- Flexible... Can be used in trench, pit, bag, or upright silos and with any forage crops used for silage.
- Cost Efficient...1 lb. of free-flowing Purina Maxi-Sil will treat a ton of silage.
- Non-corrosive... Will not damage equipment.
- Longer lasting... No refrigeration required and can be stored in any type facility.



R.D. 3
Ephrata, PA 17522
(717) 354-4616

1975 Route 336
Romulus, NY 14541
(315) 549-2578

Quality Products...Quality Service

* Trademark Ralston Purina Company

