

Friend's Stockyard, Inc.

Accident, Md. 21520

September 4, 1989

STOCK BULLS & STEERS (200 TO 400 LBS.) 80.00-98.00.

STOCK HEIFERS: 70.00-81.00.

SLAUGHTER STEERS: GOOD TO CHOICE 67.00-72.50; MEDIUM TO GOOD 62.00-66.50.

HOLSTEIN STEERS: HEAVY 56.00-63.50; LIGHT 55.00-60.00.

SLAUGHTER HEIFERS: GOOD TO CHOICE 63.00-70.00; MEDIUM TO GOOD 55.00-62.50.

BULLS: HEAVY 59.00-65.75; LIGHT 55.00-61.00.

COWS: FEW HIGH DRESSING 54.75; UTILITY HOLSTEIN 45.00-53.25; CANNERS 42.00-47.50; COMMERCIAL TO GOOD 43.00-46.50; CULL COWS 42.50 & DOWN.

VEALS: GOOD TO CHOICE 85.00-98.00, MEDIUM TO GOOD 65.00-82.50.

BOB CALVES: 50.00-77.00.

HOLSTEIN BULL CALVES: RETURN TO FARM 100-120 LB. 100.00-130.00.

HOLSTEIN HEIFER CALVES: RETURN TO FARM 100-120 LB. 80.00-120.00.

HOGS: TOP QUALITY 45.80-46.50; HEAVY 44.00-46.00; LIGHT 38.00-44.00.

SOWS: 30.00-35.50.

MALE HOGS: 27.00-31.00.

LAMBS: 60.00-64.00; FEEDER

LAMBS: 50.00-67.00.

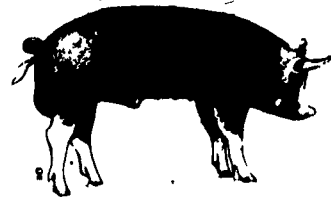
SHEEP: 10.00-20.00.

EGGS: (PER DOZEN) LARGE 79-90; MEDIUM AND SMALL, NONE AVAIL.

AND BULLS WERE STEADY AT THE MONDAY. RECEIPTS THIS WEEK ABOUT 1100 AS COMPARED WITH 1434 A WEEK AGO AND 1638 A YEAR AGO

SLAUGHTER STEERS: CHOICE 2-4, 1050-1300 LBS. 68.00-70.00, LOAD AND HALF LOAD 70.50. S ELECT AND CHOICE 2-3 1000-1250 LBS. 66.00-68.00 SELECT 2-3 950-1150 LBS. 63.50-66.50.

SLAUGHTER HEIFERS: CHOICE 2-4 950-1150 LBS. 67.50-69.00, LOAD AND



Peoria Cattle

Peoria, IL

Thurs., Sept. 7, 1989

CATTLE: TRADING SLOW. COMPARED WITH LAST WEEK SLAUGHTER STEERS AND HEIFERS MOSTLY 1.00 TO 1.50 LOWER. COWS

HONDA ENGINES

G100-2.2 HP No oil-alert\$220

GX-110 3.5 HP\$275

GXV120 4 HP, verticle shaft.....\$250

GX140 5 HP\$315

GX240, 8 HP\$445

GX240, 8 HP, Electric Start\$495

GX340, 11 HP\$530

GX340, 11 HP, Electric Start\$570

GX340 11 Hp w/2-1 Reduction..\$535

WH20X 5 HP, High Pressure,

High Volume Pump For

Irrigation Use.....\$570

Honda Generators - Call For Prices

All Engines Have Oil-Alert - Standard Shaft -

Recoll Start And Full 1 Year Warranty, Unless

Otherwise Stated. We Pay All Shipping And

COD Costs Except Next Day Air Service.

Daily UPS & RPS Service. Pa. Non-Farm Use,

Add 6% Sales Tax

* Orders Received Before 9AM Will Be

Shipped Same Day.

Burkholder Equipment

RD #5 Box 214

Shippensburg, PA 17257

(717) 532-3360 (717) 532-4519

COW MATS

Save Cows, Time,
And Bedding
One Piece Up To
100 Feet.



Bob Gabel

Route 16,
Chaffee, N.Y. 14030
Phone Collect 716-496-6025

"BELT BUSTERS"



Save on Flat Belts for Your Farm Machinery! We Will Make the Belt You Need and Ship Same Day by U.P.S. - We're Fast!

- ★ Bale Thrower Belts
- ★ Round Baler
- ★ Harvesting Machines Like Bean, Cherry, Grape, Etc.
- ★ Forage Box Belts for Gehl, Grove Kasten, New Idea, Etc.

SORRY, NO V-BELTS

Agricultural Belt Service

(Former Division of Bob Gabel Belting)

Rt. 16, Chaffee, New York 14030

PHONE 716-337-BELT

1989 Winners



Pennsylvania Dairy Princess and Promotion Services, Inc.

cordially invites you to attend the

33rd Annual Pennsylvania Dairy Princess Banquet and Coronation

on

Saturday evening, the twenty-third of September

Nineteen hundred and eighty-nine

5:30 Milk Punch Reception 6:30 Banquet

Harrisburg Marriott

4650 Lindle Road, Harrisburg, Pennsylvania

RSVP by September 19, 1989

Tickets \$14.00

Please send _____ tickets at \$14.00 each for the 33rd Annual Pennsylvania Dairy Princess Banquet and Coronation

To: Name _____

Address _____

**Return This Order Form And Your Check To:
Pa. Dairy Princess and Promotion Services, Inc.
214 South Street, Box 640, Clarion PA 16214**

or Call: (814) 226-7470

A FEED STRETCHERS SPECIAL!



The Grain Brain® Multifeeder Helps Conserve Feed And Boost Production

The most economical way to gain the advantages of multiple feeding for your herd.

The Grain Brain® system is simple to install, low cost, effective and easy to maintain. Studies show that multiple feeding with the Grain Brain® system allows you to increase production while lowering feed costs — all with no increase in labor and low initial investment. See us for details soon.

LAPP'S BARN EQUIPMENT



Sales & Service
5935 Old Philadelphia Pike, Gap, PA 17527
(717) 442-8134