



(Continued from Page A3)

Acres Cattle Update: Live cattle futures prices settled from 3 to 30 points on short covering tied to oversold conditions. Further buying was tied to reports that fed cattle sales were gaining momentum at slightly lower prices along with news late in the day that the Polish government was requesting 50,000 metric tonnes of bellies and beef from the U.S. Feeders were supported by spillover from the live cattle. October live cattle settled at \$72.37/cwt, up \$.12 after trading in a range from \$72.17 to \$72.55. September feeders posted a \$.07/cwt gain at \$82.07 after trading in a narrow range from \$81.90 to \$82.25.

CME FEEDER SETTLEMENT PRICE: 09/01/89 \$ 83.64 - down \$.01/CWT
NEXT DAY OUTLOOK: CASH PRICES - steady FUTURES - steady to mixed

Acres Hog Update: Live hog futures reversed today and ended the session higher from 5 on the Jul and Aug options to 88 on the December. Strength was in part tied to spillover from sharply higher pork bellies and light short covering. Gains were held in check by continued large receipts and cash market weakness amid the sentiment that packers were in pretty good shape inventory-wise. Underlying support was provided by ideas that cash prices would stabilize tomorrow. Bellies were sharply higher on news that Poland was seeking 50,000 metric tonnes each of U.S. pork bellies and beef as part of a food aid package.

Estimated Daily Livestock Slaughter

Under Federal Inspection
 September 6, 1989

	CATTLE	CALVES	HOGS	SHEEP
WED., 8/30/89 (EST)	123,000	9,000	343,000	24,000
WEEK AGO (EST)	127,000	9,000	326,000	23,000
WEEK TO DATE (EST)	248,000	21,000	689,000	49,000
SAME PD LT WK (EST)	375,000	25,000	973,000	60,000
SAME PD LT YR (ACT)	273,000	24,000	666,000	46,000

Oklahoma City Feed Cattle Weekly

Sept. 6, 1989

COMPARED WITH LAST WEEK'S CLOSE--FEEDER STEERS STEADY TO FIRM. FEEDER HEIFERS STEADY TO WEAK. MODERATE DEMAND FOR STEERS. FAIR DEMAND FOR HEIFERS. HOLIDAY WEEK RUN VERY LIGHT; COMPLETE PRICE RANGES WERE NOT ESTABLISHED ON FEEDER CATTLE AND CALVES. SLAUGHTER COWS \$1.00-\$1.50 HIGHER. COW DEMAND GOOD. SLAUGHTER BULLS OVER 1500 LB. \$2.00 HIGHER, UNDER 1500 LB. \$2.00 LOWER. RECEIPTS THIS WEEK 2,100 HEAD; LAST WEEK 8,443; LAST YEAR 6,261. SUPPLY INCLUDED 55% FEEDER STEERS AND HEIFERS; 28% CALVES AND LIGHT YEARLING STOCKERS; 17% COWS AND BULLS. BULK QUOTES FOR THE WEEK FOLLOW:

FEEDER STEERS: MEDIUM AND LARGE FRAME 1, 325-375 LB. \$105.75-\$108.00; 425-500 LB. \$95.00-\$99.00 (MOST LOTS UNDER 500 LB. MIXED STEERS & BULLS); 500-600 LB. \$88.50-\$96.00; 600-700 LB. \$83.25-\$87.50; 725-800 LB. \$81.75-\$83.50; 925-950 LB. \$76.50-\$76.75. **LARGE FRAME 2 HOLSTEINS,** 775-850 LB. \$69.00-\$72.50; 965 LB. LOT \$65.00.

FEEDER HEIFERS: MEDIUM AND LARGE FRAME 1, FEW 195-210 LB. \$101.50-\$108.00; 305 LB. LOT \$92.75; 350-500 LB. \$85.00-\$90.25; 500-600 LB. \$80.00-\$84.25; FEW LOTS 600-750 LB. \$79.00-\$79.25.

SLAUGHTER COWS: BREAKING UTILITY AND COMMERCIAL Y.G. 3-5 \$48.25-\$51.50, HIGH DRESSING \$51.75-\$55.25. **CUTTER AND BONING UTILITY Y.G. 1-2** \$49.25-\$53.00, FEW HIGH DRESSING \$52.00-\$53.75. **CANNER AND LOW DRESSING CUTTER**

OVER 800 LB. \$46.00-\$48.75; 700-800 LB. \$38.50-\$43.50.

SLAUGHTER BULLS: Y.G. 1, 1500-2175 LB. HIGH BONING AND DRESSING \$64.25-\$67.75, AVERAGE DRESSING \$60.00-\$65.00; 1075-1500 LB. AVERAGE DRESSING \$54.75-\$59.00.

REPLACEMENT COWS: PRE TESTED FOR BANGS, PREGNANCY, AND AGE MEDIUM AND LARGE FRAME NO. 1 MUSCLED COWS: 5-8 YEAR OLD 900-1150 LB. 5-7 MONTHS BRED \$58.00-\$65.00/CWT. 8-10+ YEAR OLD 900-1125 LB. 2-6 MONTHS BRED \$49.00-\$53.50/CWT.

Greencastle Livestock

Greencastle, Pa.

Monday, Sept. 4, 1989

SLAUGHTER CATTLE RECEIPTS: 333 HD. **SLAUGHTER STEERS:** 62 HD. TREND: STEADY. HIGH CHOICE & PRIME 2-4 CHOICE 2-3, 950-1075 LBS. 68.00-70.00, CHOICE 2-3 1075-1375 LBS. 68.00-71.00, CHOICE 2-3 OVER 1375 LBS. 67.00-70.50, CHOICE 4 ALL WEIGHTS 64.00-68.00, SELECT & CHOICE 1-2 950-1100 LBS. 67.00-69.75, SELECT & CHOICE 1-2 1100-1375 LBS. 65.00-68.00, SELECT & CHOICE 1-2 OVER 1375 LBS. 62.50-66.00. **HOLSTEINS:** CHOICE 2-3 1050-1450 LBS. 64.00-66.00, SELECT 1-2 1050-1450 LBS. 59.00-62.50. **SLAUGHTER HEIFERS:** 21 HD. TREND: STEADY. CHOICE 2-3 850-1000 LBS. 65.50-69.75, CHOICE 2-3 1000-1250 LBS. 67.00-70.50, CHOICE 4 ALL WEIGHTS 63.50-66.00, SELECT & CHOICE 1-2 850-1000 LBS. 65.00-69.50, SELECT & CHOICE 1-2, 1000-1250 LBS. 64.00-68.00. **HOLSTEINS:** CHOICE 2-3, 1000-1350 LBS. 57.50-61.50, SELECT & CHOICE 1-2 1000-1350 LBS.

55.00-57.50. **SLAUGHTER BULLS:** 6 HD. TREND: STEADY TO 1.00 HIGHER. YIELD GRADE 1 ALL WEIGHTS 60.00-66.60, YIELD GRADE 2 ALL WEIGHTS 55.00-60.00. **BULLOCKS:** 7 HD. CHOICE 1-3 950-1150 LBS. 63.00-67.75, CHOICE 1-3 1150-1375 LBS. 64.00-66.50, SELECT 1-2 950-1250 LBS. 60.00-64.00. **COWS:** 237 HD. TREND: 2.00 TO 3.00 HIGHER. **BREAKING UTILITY & COMMERCIAL** 47.00-53.00, **CUTTER & BONING UTILITY** 48.00-55.00, FEW TO 57.00, **CANNER & LOW CUTTER** 47.50 & DOWN.

*** STOCKER & FEEDER - CATTLE RECEIPTS:** * INCLUDES RESULTS FROM FEEDER CATTLE SALE SEPT. 1ST. 189 HD. TREND: 189 HD. GOOD DEMAND. BEEF TYPES: 200-400 LBS. STEERS 90.00-106.00, BULLS 88.00-99.00, HEIFERS 80.00-89.00; 400-600 LBS. STEERS 84.00-97.00, BULLS 72.00-84.00, HEIFERS 80.00-89.00; 600-800 LBS. STEERS 70.00-87.50, BULLS 60.00-70.00, HEIFERS 68.00-79.00; 800-975 LBS. STEERS 64.50-72.00, BULLS 55.00-61.00, HEIFERS 62.00-67.50. **HOLSTEINS & DAIRY CROSS:** 200-400 LBS. STEERS 75.00-94.00, BULLS 73.00-91.00, HEIFERS 80.00-95.00; 400-600 LBS. STEERS 70.00-74.00, BULLS 60.00-66.00, HEIFERS 64.00-74.00; 600-800 LBS. STEERS 65.00-71.50, BULLS 57.00-61.00, HEIFERS 60.00-65.00; 800-975 LBS. STEERS 58.00-63.50, BULLS 52.50-57.50, HEIFERS 57.00-60.00. **CALVES:** 540 HD. **VEAL CALVES:** TREND: STEADY. CHOICE 150-300 LBS. 90.00-106.00, GOOD 150-300 LBS. 75.00-89.00, GOOD 100-150 LBS. 80.00-89.00, GOOD 80-100 LBS. 78.00-85.50, STANDARD 80-100 LBS. 72.00-78.00, STANDARD 80 LBS. & DOWN 71.00 & DOWN. **CALVES RETURNING TO THE FARM:** TREND: GOOD DEMAND. **HOLSTEIN BULLS** OVER 100 LBS. 130.00-150.00, UNDER 100 LBS. 115.00-140.00, **HOLSTEIN HEIFERS** OVER 100 LBS. UP TO 184.00, UNDER 100 LBS. UP TO 165.00, **BEEF TYPE BULLS** OVER 90 LBS. UP TO 130.00, **BEEF TYPE HEIFERS**, OVER 90 LBS. UP TO 125.00.

SHEEP & LAMBS: 40 HD. **LAMBS:** TREND: STEADY. CHOICE 80-100 LBS. 58.00-60.00, 100-120 LBS. 58.00-60.50, 120 LBS. & OVER 53.00-55.00; MEDIUM & GOOD ALL WEIGHTS 57.00-59.00; **FEEDER LAMBS** 60-85 LBS. 60.00-65.00. **LIGHT LAMBS,** 65.00-71.00. **SHEEP:** EWES

LEAN 19.00-22.50, EWES FAT 14.00-18.00, YEARLINGS 25.00-35.00, BUCKS 16.00-18.50.

GOATS: 11 HD. SMALL 22.00-31.00, MEDIUM 32.00-50.00, LARGE 55.00-81.00.

HOGS, SOWS & BOARS: 120 HD. **HOGS:** BARROW & GILTS TREND: 1.00 LOWER. 210-250 LBS. 44.00-46.00, 250-260 LBS. 45.00-45.50, 260-270 LBS. 43.00-44.00, 270-300 LBS. 39.00-40.00. **LIGHT HOGS:** 140-180 LBS. 36.00-38.00, 180-210 LBS. 38.00-41.50. **SOWS:** TREND: STEADY. GOOD SOWS UNDER 400 LBS. 34.00-38.50, GOOD SOWS OVER 400 LBS. 35.00-38.00, CULL SOWS ALL WEIGHTS 31.50 & DOWN. **BOARS:** TREND: STEADY. 180-210 LBS. 27.00-30.00, 210-260 LBS. 30.00-33.50, 260-300 LBS. 29.00-31.00, 300 LBS. & OVER 30.00-32.00.

FEEDER PIGS: (BY THE HEAD) NOT AVAILABLE.

SALE EVERY MONDAY AT 2:00 PM & EVERY THURSDAY AT 1:00 PM. HAY & STRAW SALE EVERY MONDAY & THURSDAY AT 11:30 AM. SPECIAL FEEDER CATTLE SALE: FRIDAY, OCT. AT 7:15 P.M. SPECIAL FEEDER PIG SALE: SATURDAY, SEPT. AT 1:00 P.M.

BEEF & PORK BARBEQUE MONDAY, SEPT. 11, 1989 ALL DAY. PLEASE PLAN TO ATTEND!

New Holland Horses

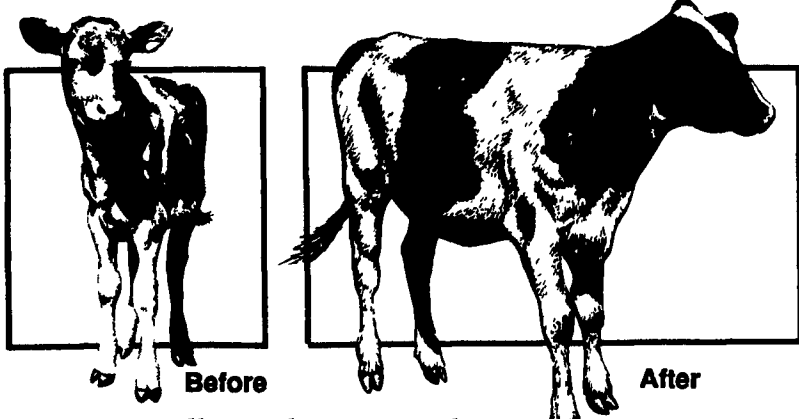
New Holland Sales Stables
 New Holland, PA

Monday, Sept. 4, 1989

REPORT SUPPLIED BY AUCTION REGISTERED RECEIPTS OF 315 HEAD OF HORSES, MULES AND PONIES. KILLER MARKET LOWER; RIDING HORSE MARKET STEADY.

DRIVING HORSES 410.00-1000.00. **RIDING HORSES** 375.00-800.00. **LIGHTWEIGHT KILLERS** 250.00-400.00. **HEAVYWEIGHT KILLERS** 450.00-585.00. **MARES** 40.00-100.00. **COLTS** 25.00-50.00. **GELDINGS** 40.00-100.00. **LARGER PONIES** 150.00-340.00.

You'll Get Your Heifers to Production Faster, With Less time and Money.



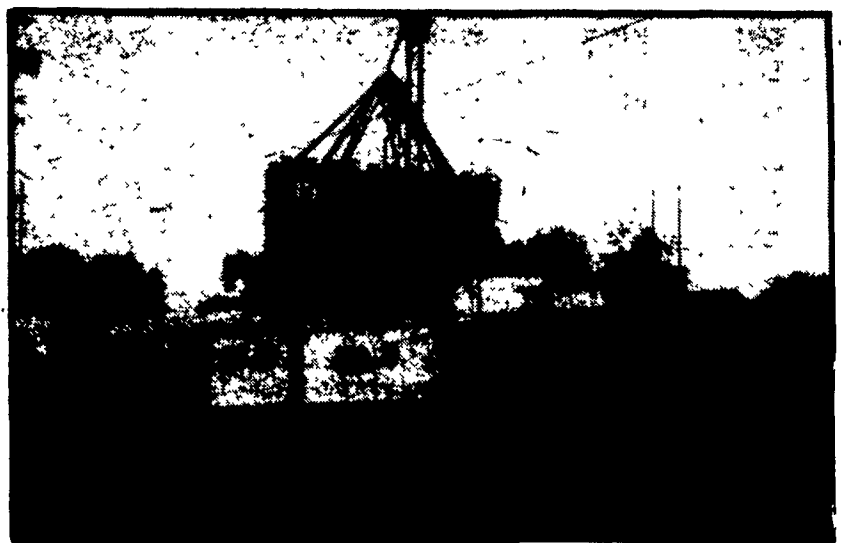
Manna Pro Milk Replacers are less expensive than milk and far easier to mix than most milk replacers. They're Istantized!



Order Now for Prompt Delivery and save \$2.00 A BAG!



Order Now For Prompt Delivery and save \$1.50 A BAG!



ROSS'S FEED AND GRAIN

(Formerly Manna Pro Country Store)
 27 North Church Street
 Quarryville, PA
 (717) 786-7361

- Specializing in grinding and mixing
- Custom soybean roasting
- Manna Pro feed dealer
- Manufacture of all types of animal feed
- Ample grain storage
- Thermolass

OTHER AREA DEALERS

DUCTHMAN FEED MILLS, INC.

25 East Church Road
 Stevens, PA 17578
 (717) 733-3020

BROWN REA, INC.

Serving the Atglen Community for over 70 Years.
 Atglen, PA 19310
 (215) 593-5149