

Lancaster Co. Livestock Market Auctions

Lancaster Livestock Auction

Monday, August 28, 1989
Report Supplied by USDA

Cattle	Calves	Hogs	Sheep	Goats
Monday's Auction	1042	154	673	1130 555
Last Monday's Auction	1007	148	372	898 407
Last Year's Auction	999	127	357	685 514

CATTLE: SLAUGHTER STEERS 1.00 LOWER; SLAUGHTER HEIFERS STEADY IN A LIGHT TEST; COWS UNEVENLY STEADY; BULLOCKS AND BULLS FIRM TO 2.00 HIGHER. SUPPLY INCLUDED 66% SLAUGHTER STEERS, 9% SLAUGHTER HEIFERS, 12% COWS, AND 13% BULLS.

SLAUGHTER STEERS: HIGH CHOICE AND PRIME 2-3 1100-1500 LB 72.00-74.00; CHOICE 2-4 1000-1500 LB 69.00-72.00, 1500-1600 LB 67.75-69.00; MIXED SELECT AND CHOICE 2-3 1000-1400 LB 66.00-69.00; SELECT MOSTLY YIELD GRADE 2 64.00-66.00; HOLSTEIN STEERS, CHOICE 1100-1500 LB 63.00-69.00, SELECT 1000-1500 LB 55.00-62.00.

SLAUGHTER HEIFERS: CHOICE 2-4 1000-1200 LB 67.00-70.00, 825-950 LB 66.00-69.00; FEW CHOICE 2 1000-1200 LB 71.00-73.00; FEW SELECT 2-3 1050-1200 LB 60.00-62.00.

COWS: BREAKING UTILITY AND COMMERCIAL 2-4 BULK 48.25-52.00, HI DRESSING 52.00-54.50, CUTTER AND BONING UTILITY 1-2 LO DRESSING 45.00-47.00, BULK 47.00-50.00, HI DRESSING 50.00-52.00. CANNER AND LOW CUTTER LO DRESSING 42.75-45.00, BULK 45.00-48.00.

BULLOCKS: CHOICE 1-3 1100-1400 LB 64.00-69.00.

BULLS: YIELD GRADE 1 1150-2100 LB 61.00-69.00, FEW 69.00-72.00; YIELD GRADE 2 1000-1700 LB 58.00-64.00.

VEAL CALVES: VEALERS FULLY STEADY; SLAUGHTER CALVES 10.00-15.00 LOWER.

VEALERS: CHOICE AND PRIME 280-360 LB 99.00-111.00; CHOICE 160-260 LB 90.00-99.00; HIGH GOOD AND LOW CHOICE 80-115 LB 83.00-88.00; STANDARD AND LOW GOOD 60-85 LB 73.00-83.00.

SLAUGHTER CALVES: CHOICE 300-475 LB 65.00-75.00.

RETURNED TO FARM: BULK 95-120 LB HOLSTEIN BULLS 112.00-125.00; SMALL FRAME 90-115 LB 89.00-110.00.

HOGS: COMPARED TO LAST WEDNESDAY BARROWS AND GILTS VERY UNEVEN, US 1-2 1.00 HIGHER, US 1-3 1.00 LOWER; SOWS STEADY.

BARROWS AND GILTS: US 1-2 210-250 LB 47.50-49.50; US 1 FEW 220-240 LB 49.50-50.75; US 1-3 215-260 LB 45.00-46.00.

SOWS: US 1-3 300-600 LB 34.00-37.00; US 2-3 400-600 LB 30.00-33.00.

BOARS: 450-700 LB 32.75-34.25.

SHEEP: SPRING LAMBS MOSTLY STEADY; SLAUGHTER EWES 5.00 LOWER.

SPRING LAMBS: CHOICE AND PRIME 80-110 LB 65.00-70.00; CHOICE 80-105 LB 62.00-67.00, 40-65 LB 70.00-90.00; GOOD TO LOW CHOICE 40-95 LB 50.00-63.00.

SLAUGHTER EWES: UTILITY AND GOOD 15.00-25.00; YEARLINGS AND TWO-YEAR-OLDS 25.00-45.00.

GOATS: ALL GOATS SOLD BY THE HEAD. LARGE 80.00-115.00, THIN 60.00-80.00; MEDIUM 45.00-55.00, THIN 35.00-45.00; SMALL, MAINLY KIDS, 35.00-45.00, THIN 25.00-35.00.

Vintage Livestock Auction

Tuesday, August 29, 1989
Report Supplied by USDA

Cattle	Calves	Sheep	Goats
Today	773	1078	5 0
Last Tuesday	617	1013	19 3
Last Year	981	896	3 0

CATTLE: SLAUGHTER STEERS FIRM; COWS FIRM TO 1.00 HIGHER; NOT ENOUGH OF ANY OTHER CLASS TO TEST MARKET TRENDS. SUPPLY INCLUDED 48% STEERS AND 47% COWS.

SLAUGHTER STEERS: HIGH CHOICE AND PRIME 2-4 1100-1650 LB 73.00-75.00; CHOICE 2 1100-1500 LB 72.00-74.00; CHOICE 2-4 1100-1500 LB 69.00-73.00; SELECT 2-3 1000-1500 LB 66.00-68.00.

SLAUGHTER HEIFERS: SCARCE.

COWS: BREAKING UTILITY AND COMMERCIAL 2-4 BULK 48.00-53.00, HIGH DRESSING 52.00-54.00. CUTTER AND BONING UTILITY 1-3 LOW DRESSING 45.00-47.00, BULK 47.00-51.00, HIGH DRESSING 50.00-53.00. CANNER AND LOW CUTTER LOW DRESSING 42.00-45.00, BULK 45.00-48.50.

BULLS: FEW YIELD GRADE 1 1200-1750 LB 64.00-66.75.

VEAL CALVES: VEALERS UNEVENLY STEADY. SUPPLY INCLUDED 78% IN GRADED SALE OF WHICH 76% SOLD TO RETURN TO FARM.

VEALERS: COUPLE HEAD OF CHOICE 150-235 LB 94.00-109.00; FEW HIGH GOOD AND LOW CHOICE 125-300 LB 70.00-92.00, 80-115 LB 82.00-91.00; STANDARD AND LOW GOOD 65-95 LB 70.00-90.00.

RETURNED TO FARM: HOLSTEIN BULLS, 275 HEAD 95-125 LB 124.00-126.00, 95 HEAD 90-114 LB 100.00-105.00, 139 HEAD 80-100 LB 88.00-90.00. HOLSTEIN HEIFERS, 71 HEAD 90-114 LB 139.00-161.00, 29 HEAD 83 LB 88.00; SMALL FRAME 90-110 LB 119.00-121.00.

SHEEP: SCARCE.

GOATS: SCARCE.

Lancaster Livestock Auction

Lancaster, Pa.
Wednesday, August 30, 1989

Cattle	Calves	Hogs	Sheep	Goats
Wed's Auction	19	5	573	0 0
Last Wed's Auction	35	8	295	0 0
Last Year's Auction	43	8	270	1 0

CATTLE: No market test.

SLAUGHTER STEERS: Choice 3-4 1300-1500 lb 69.25-70.75.

VEAL CALVES: No market test.

HOGS: Compared to Monday small supply barrows and gilts 1.00-2.00 lower, demand light; sows steady.

BARROWS AND GILTS: US 1-2 215-225 lb 45.00-47.50, US 1-3 215-250 lb 44.00-45.50.

SOWS: US 1-3 300-600 lb 34.00-37.00, US 2-3 450-600 lb 30.00-34.00.

BOARS: Few head 300-400 lb 30.00-31.00.

SHEEP: No market test.

GOATS: No market test.

Isennock Auction

New Park, Pa.
Monday, Aug. 28, 1989
Report supplied by auction

SLAUGHTER COWS: GOOD 48.75-49.25; LOW TO GOOD 45.25-47.00; LOW TO SHELL 43.75 AND LOWER.

VEAL CALVES: 240-280 LBS. 96.00-99.00; 120-130 LBS. 94.00-118.00; 100-110 LBS. 100.00-121.00; 85-95 LBS. 91.00-117.00; 80 LBS. 88.00 AND LOWER.

HEIFERS: 550-650 LBS. 54.00-60.00; 680-750 LBS. 37.50-39.00.

FEEDER BULLS: 400-470 LBS. 88.00-90.00; 1 AT 580 LBS. AT 70.00.

FAT STEERS: HOLSTEINS 1380-1490 LBS. 51.00-60.00; 990-1150 LBS. 66.50-69.50.

SOWS: 340-400 LBS. 30.00-32.50; 500-650 LBS. 31.50-33.50.

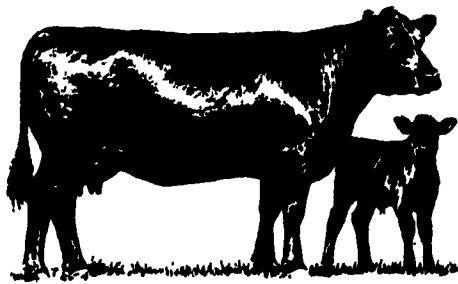
BOARS: 450 LBS. 28.00.

HOGS: 160-190 LBS. 38.00-40.00; 205-210 LBS. 36.00-41.50.

SHOATS: OVER 35 LBS. 23.50.

GOATS: SMALL 28.00.

BUYING STATION PAID 47 CENTS MONDAY.



New Holland Livestock Auction

Lancaster, Pa.
Thursday, August 31, 1989

Cattle	Calves	Sheep	Goats
Today	897	710	84 72
Last Thursday	1046	701	110 111
Last Year	953	533	122 89

CATTLE: Slaughter steers 1.00 lower; slaughter heifers scarce; cows 1.00 higher; bulls steady to 2.00 lower, most decline on yield grade 2. Supply included 56% slaughter steers and 33% cows.

SLAUGHTER STEERS: High Choice and Prime 2-4 1200-1500 lb 72.00-74.50; Choice 2-4 1000-1500 lb 68.50-72.00; Select 2-3 1000-1600 lb 66.00-68.00; Holsteins steers, Choice 2-3 1100-1750 lb 62.00-66.00, few Select 2 1100-1400 lb 55.00-60.00.

SLAUGHTER HEIFERS: Scarce.

COWS: LO DRESSING BULK HI DRESSING Breaking Utility and Commercial 2-4 49.00-53.00 52.00-54.00 Cutter and Boning Utility 1-3 46.00-48.00 48.00-52.00 51.00-53.00. Canner and low Cutter 42.00-45.00 45.00-48.50.

BULLOCKS: Few Choice 1-3 1055-1500 lb 64.00-68.25.

BULLS: Yield grade 1 1075-1550 lb 62.00-68.50; yield grade 2 975-2100 lb 55.00-62.00.

VEAL CALVES: Vealers mostly steady, with return to farm 10.00 higher Demand good for Holstein bulls and heifers to return to farm.

VEALERS: Choice and Prime 170-300 lb 100.00-112.00; Choice 170-350 lb 87.00-99.00; high Good and low Choice 150-330 lb 70.00-86.00, 80-120 lb 80.00-90.00; Standard and low Good 70-100 lb 70.00-90.00.

SLAUGHTER CALVES: Few head Choice 200-475 lb 83.00-95.00.

RETURNED TO FARM: Bulk 95-125 lb Holstein bulls 110.00-140.00, few 140.00-145.00; small frame 80-115 lb 83.00-100.00. Holsteins heifers, few head 90-120 lb 134.00-162.00; small frame 85-110 lb 82.00-102.00.

SHEEP: Spring lambs and slaughter ewes steady.

SPRING LAMBS: Choice 80-120 lb 55.00-65.00, 60-90 lb 70.00-90.00.

SLAUGHTER EWES: Utility and Good 14.00-20.00; Yearlings and two-year olds 28.00-46.00.

GOATS: All goats sold by the head. Couple head Large 75.00-90.00; Medium 55.00-65.00; Small 35.00-50.00.

Lancaster County Weekly

Lancaster, Pa.
Friday, September 1, 1989

Cattle	Calves
This Week	3050 1950
Last Week	2705 1870
Last Year	2976 1681

CATTLE: Slaughter steers and heifers steady; cows 1.00 higher; bullocks steady; bulls steady to 2.00 lower, with the decline on yield grade 2. Supply included 52% slaughter steers, 5% heifers, 26% cows, 7% bulls, with the balance feeders.

SLAUGHTER STEERS: High Choice and Prime 2-4 1100-1600 lb 72.00-75.00; Choice 2 1100-1500 lb 72.00-74.00; Choice 2-4 1000-1500 lb 68.50-72.00, 1500-1650 lb 67.50-69.00; Select 2-3 1000-1600 lb 64.00-68.00; Holsteins steers, Choice 2-3 1100-1700 lb 62.00-66.00, Select 2 1000-1500 lb 55.00-60.00.

SLAUGHTER HEIFERS: Choice 2-4 1000-1200 lb 67.00-70.00, 800-950 lb 66.00-69.00; few Choice 2 1000-1200 lb 71.00-73.00; few Select 2-3 1050-1200 lb 60.00-62.00.

COWS: LOW DRESSING BULK HIGH DRESSING Breaking Utility and Commercial 2-4 49.00-53.00 52.00-54.00 Cutter and Boning Utility 1-3 46.00-48.00 48.00-52.00 51.00-53.00. Canner and low Cutter 42.00-45.00 45.00-48.50.

BULLOCKS: Few Choice 1-3 1050-1500 lb 64.00-69.00.

BULLS: Yield grade 1 1075-2100 lb 61.00-69.00, few head up to 72.00; yield grade 2 1000-2100 lb 55.00-62.00.

VEAL CALVES: Vealers mostly steady, with return to farm 5.00-10.00 higher, most advance on heifers; slaughter calves steady. Demand very good for Holstein bulls and heifers to return to farm.

VEALERS: Choice and Prime 170-300 lb 100.00-112.00; Choice 170-350 lb 87.00-99.00; high Good and low Choice 150-330 lb 72.00-90.00, 80-120 lb 80.00-90.00; Standard and low Good 65-100 lb 70.00-90.00.

SLAUGHTER CALVES: Choice 300-475 lb 83.00-95.00.

RETURNED TO FARM: Bulk 95-125 lb Holstein bulls 110.00-140.00; small frame 80-115 lb 83.00-110.00. Few Holsteins heifers 90-120 lb 134.00-162.00; small frame 85-110 lb 82.00-102.00.

Greencastle Feeder Pig Sale

Saturday, August 26, 1989

STRONG DEMAND WITH HIGHER PRICES! PIGS UNDER 50 LBS. 30.00 TO 40.00 HIGHER. *PIGS OVER 50 LBS. 15.00 TO 20.00 HIGHER.

410 HEAD - GRADE 1 & 2: 154 HEAD 37-49 LBS. 75.00-89.00; 160 HEAD 50-59 LBS. 65.00-82.50; 54 HEAD 60-69 LBS. 59.00-67.00; 20 HEAD 83-91 LBS. 57.00-60.00.

73 HEAD - GRADE 2: 65 HEAD 37-49 LBS. 55.00-67.00; 8 HEAD 50-55 LBS. 56.00-58.00.

GRADE 2 & 3 AND AS IS: 51.00-66.00.

NEXT FEEDER PIG SALE AT GREENCASTLE LIVESTOCK AUCTION WILL BE HELD SATURDAY, SEPTEMBER 23, 1989.

PIGS GRADED AND WEIGHED ON ARRIVAL.

B&R CATTLE CO.
RD 1, Marietta, PA
17547
Office Phone:
(717) 653-8164
Specializing In
Stockers &
Feeders
JOHN BOWMAN
Ph: (717) 653-5728
RON RANCK
Ph (717) 656-9849

LEBANON VALLEY LIVESTOCK MARKET, INC.
1 mile East of Fredericksburg along Rt. 22
PHONE JONESTOWN 865-2881

Flea Market Auction every Tuesday at 12:30. Tools, Eggs, Produce, etc.
Buyers & Sellers Welcome



AUCTIONS MONDAY

9:00 A.M. — Slaughter Bulls, Heifers, Steers, Cows
10:00 A.M. — Goats, Veal Calves, Lambs
12 Noon — Slaughter Hogs
WEDNESDAY
8:00 A.M. — Slaughter Hogs
10:00 A.M. — Slaughter Bulls, Heifers, Steers, Cows
11:00 A.M. — Veal Calves, Lambs
FRIDAY
11:00 A.M. — Stocker and Feeder Cattle

SATURDAY
8:00 A.M. — Slaughter Hogs

Next Feeder Cattle Sale
Fri., Sept. 8 - 11:00 A.M.
Graded Cattle sold in lots of 10 or more

Closed Sat., Sept. 2, 1989
Open Labor Day, Monday, Sept. 4, 1989

LANCASTER STOCKYARDS, INC.

1147 Litz Pike Lancaster, Pennsylvania 17601
Serving The Community For 90 Years

HAY, STRAW & CORN SALE

Every Friday At 11 AM



GREEN DRAGON MARKET & AUCTION

RD No. 4 Ephrata, Pa. 717-738-1117
1 mile North of Ephrata on N. State St.

Out of State Buyers - Cash or Certified Check Only