

Insights On Production Efficiency Shared At Swine Seminar

PETERSBURG, IL — Nearly 150 hog producers representing approximately 400,000 hogs received insights for fine-tuning production efficiencies at the Illinois Summer Swine Seminar recently held in Petersburg, IL.

Each producer had been invited by one of nine attending swine veterinarians. The seminar was sponsored by SmithKline Animal Health Products and coordinated by Jon Knapp, major account coordinator for the firm. Moderating the seminar was Dr. Joe Connor, a Carthage, IL, swine consultant and past president of the American Association of Swine Practitioners (AASP).

Featured speakers consisted of swine experts Gary D. Dial, DVM, Ph.D., University of Minnesota; Tim Loula, DVM, Nicolet, Minn.; Richard D. Hedde, Ph.D., SmithKline Animal Health Products; LeRoy G. Biehl, DVM, MS, University of Illinois; and Darrell Dunteman, CPA, Lewis-town, Ill.

One of eight means of increas-

ing production efficiency discussed was selection of a growth promotant for maximum results. Growth promotants increase the availability of feed nutrients to pigs by controlling the activity of gut bacteria. Hedde reported on the effectiveness of five growth promotants commonly used as feed additives: Virginiamycin, Tylosin, Flavormycin, Bacitracin and Chlortetracycline.

Virginiamycin recently proved to offer the best opportunity for growth and feed efficiency enhancement in a study conducted by Hedde and Thomas O. Lindsey, Ph.D., SmithKline Animal Health Products.

Hedde also reviewed the history of porcine somatotropin in worldwide pork production. He concluded, "Somatotropin is a natural product (of the pig's metabolic system) that will enhance the productive efficiency of pig production as well as to produce a more healthful pork product."

Dial made well received presentations on the aspects of repro-

ductive performance and facility use: how to optimize sow and facility utilization; factors influencing the reproductive performance in commercial swine; and breeding and gestation facilities -- matching biology and facility design.

Loula emphasized management essentials for reducing preweaning mortality: Highly motivated people, well planned and cared for facilities, genetics, and tender loving care for the herd.

Biehl moved the discussion to the grower-finisher stage of production. He says, "The performance of the grower-finisher pigs often determines the profit margin in the swine unit."

When a production problem occurs here, he encourages producers to thoroughly examine their herd's genetics, nutrition, environment, health-disease status, management and relationships among these factors.

Dunteman reviewed methods available for calculating production costs. He emphasized using

an accurate basis in order to offset profit with actual production costs.

Proceedings from the swine seminar can be obtained by writ-

Tested Boar Sale

(Continued from Page D2)

Boar Index of 136 and sold for \$725. The remaining two Berkshires in this pen brought \$550 and \$450.

Carl Rabenold of Kutztown offered a pen of two Hampshires, the pen index being 124, the average sale price \$488. The boars had average daily gains of 2.18 and 2.31 pounds, back fat measurements of .59 and .76, and percentage of lean cuts, 64 and 60. The boars sold for \$550 and \$425.

A pen of two Spotted boars from K. Ketterer of Newville finished with an index of 111 and an average sale price of \$488. The high boar in the pen had a daily gain of 1.88 pounds, back fat of .59, and a 6.2 loin eye area. This boar brought \$600. The second boar brought \$375, finishing with a boar index of 103.

A Yorkshire consigned by Bill Work of Smock, sold for \$400. The boar gained 2.06 pounds per day, had 61% of lean cuts, and finished with an index of 90.

Two Hampshires from Donald Lake of Big Cove Tannery went

ing SmithKline Animal Health Products, 1600 Paoli Pike, West Chester, PA 19380 or by calling Annmarie Gormley at 800/877-7303, extension 7506.

for \$400 and \$325. The boars had daily gains of 2.06 and 2.05 pounds, back fat measurements of .49 and .52, loin eye areas of 4.7 and 5.7, and final indices of 127 and 124.

A Hampshire consigned by C. & C. Bomgardner of Annville with a daily gain of 1.73 pounds, 165 days to 230 pounds, and a final index of 103 brought \$300.

A total of 30 boars averaged \$475; with 10 Durocs averaging \$588, three Berkshires averaging \$575, two Spotted averaging \$488, five Hampshires averaging \$400, one Landrace bringing \$400, and 13 Yorkshires averaging \$395.

The sale was sponsored by the Pennsylvania Department of Agriculture in Cooperation with the Penn State University and the Pennsylvania Pork Producers Council. The Sale Committee consisted of: Vern Hazlett, Kenneth Kephart, Leon Arnold, Ken Ketterer, Carl Rabenold, Bill Work, Reno Thomas, and John Zimmerman. The auctioneer was Harry Bachman.

STIHL® #1 WORLDWIDE



SAVE \$50⁰⁰
024WB — \$289⁹⁵*
2.82 HP / 10.4 lbs.

STIHL QUALITY!
NEW 026 — \$329⁹⁵*
3.49 HP / 10.4 lbs.

028SWB — \$339⁹⁵*
3.35 HP / 12.3 lbs.

- * Made in the U. S. A.!
- * Anti-Vibration Handles!
- * Lifetime Electronic Ignition!
- * Quickstop™ Inertia Chain Brake!
- * Oil-Saving Ecomatic™ Lube System!

* Includes 16" bar & chain.

NEW PRODUCTS FROM STIHL

044 PRO SAW — Best power-to-weight ratio of any pro saw in the market today! H.D. air filter.

BACKPACK BLOWERS — Make Work Fun with two new models. Air flow vol. - Up to 476 cfm.

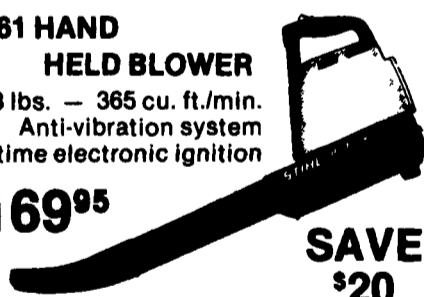
CHAPS — Added saw safety with Cordura® nylon chaps. Nine layers of cut retardant material!

BG-61 HAND HELD BLOWER

8.8 lbs. — 365 cu. ft./min.
Anti-vibration system
Lifetime electronic ignition

\$169⁹⁵

SAVE \$20



Available at Participating Dealers.

- Bechtelsville**
PASSMORE SERVICE
CENTER, INC.
RD 1, Rt. 100
215-387-9084
- Bowers**
BOWERS LAWN
& GARDEN
Lyons Rd.
215-682-7716
- Elm**
BOMBERGER'S STORE, INC.
666 W. Newport Rd.
717-885-2407
- East Earl**
GOODS LAWN & GARDEN
CENTER
Route 23
717-354-4026 Ext. 34
- Ephrata, Hershey, Lancaster**
HOLLINGER'S LAWN &
GARDEN EQUIP.
Ephrata, PA 717-738-1131
Hershey, PA 717-533-4060
Lancaster, PA 717-656-2710
- Ephrata**
WES STAUFFER
ENGINES & EQUIPMENT
23 Pleasant Valley Rd.
717-738-4215

- Gap**
GAP POWER EQUIPMENT
Corner of Rt. 30 & Rt. 897
717-442-8870
- Hamburg**
SHARTLESVILLE
FARM SERVICE
RD 1, Box 1362
215-488-1025
- Jonestown**
BLUE MOUNTAIN
ENTERPRISES, INC.
Rt. 72 South
717-865-2994
- Lebanon**
THE FARM WORKSHOP
1611 Fonderwhite Rd.
717-273-9540
- Myerstown**
EBLING LAWN &
GARDEN SERVICE
898 E. Lincoln Ave.
717-866-6720
- Ono**
SHUEY'S SALES & SERVICE
Jonestown Rd.
717-865-4915
- Oxford**
OXFORD GREENLINE, INC.
1100 Limestone Rd.
215-832-2573

- Peach Bottom**
WAKEFIELD SAW SHOP
742 Nottingham Rd
- Port Trevorton**
IVAN MARTIN'S
SAW SERVICE
RD 1, Box 689
- Ronks**
A & B SALES & SERVICE
2 Miles South of Rt. 23 Along 772
Thru Monterey - RD 1
- Somerset, PA**
McCooie, MD
LINCOLN SUPPLY &
EQUIPMENT CO.
Somerset, PA 814-443-1681
McCooie, MD 301-786-6800
- Watsonstown**
BEILER'S REPAIR
1 M. W. of Turbotville
On Rt. 44
RD 2, Box 54
- West Chester**
M.S. YEARSLEY & SONS
110-120 E. Market St.
215-696-2990

STIHL®
NUMBER ONE WORLDWIDE

D.S. MACHINE SHOP

238B Old Leacock Rd., Gordonville, PA 17529

INTRODUCING NEW STYLE STOVES

- LARGE GLASS DOORS • ENERGY EFFICIENT
- PLACE YOUR ORDER NOW!**
FOR EARLY DELIVERY

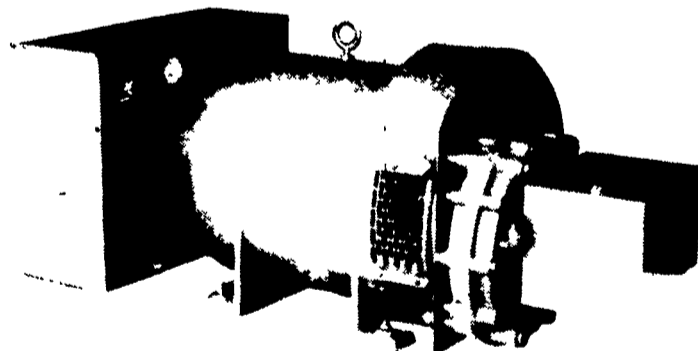
CUSTOM BUILT HIGH PRESSURE WASHERS



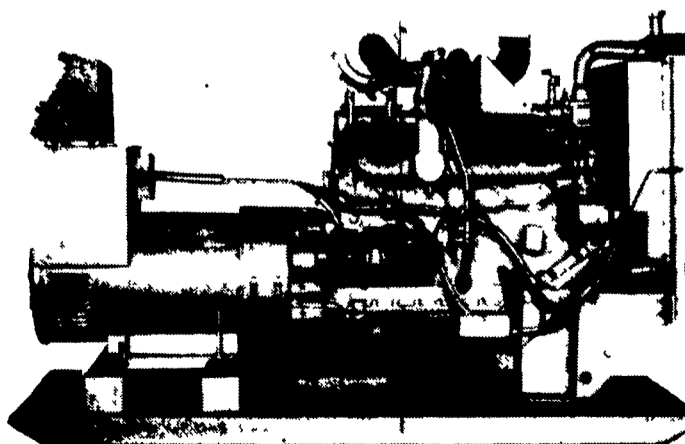
UPS Service



STANDBY GENERATORS



PTO Driven



Automatic Systems

MAXI-POWER INC.

330 Fonderwhite Rd. Lebanon, PA 17042
24 Hr. Service (717) 273-4544 Radio Dispatch