

Virginia

(Continued from Page A11)

SPRING 55.25; BUCKS 47.50 FEEDER LAMBS CHOICE AND FANCY 70-85 LBS 58.50 SLAUGHTER EWES ALL GRADES 12.00 15 GOATS 12.00-50.00 PER HEAD.

FEEDER CATTLE 332 HEAD - FEEDER STEERS AND FEEDER HEIFERS 1.00-4.00 LOWER. STEERS; MEDIUM 1 LARGE 1 SMALL 1 MED.&LARGE 2 200-300 91.00-98.00 --- 300-400 92.00-102.00 96.00-100.00 --- 83.00-90.00 400-500 84.00-89.00 85.00-94.00 74.00-78.00 77.00-80.00 500-600 83.00-88.00 --- 72.00-73.00 75.00-81.00 600-700 77.00-82.50 81.00-82.00 69.00-71.00 74.00-78.00 700-800 74.25-78.00 77.50-80.00 --- 69.00-72.00 800-900 74.00-76.00 --- 900-1100 70.00-73.00 --- --- HOLSTEIN STEERS; MED.&LARGE 1-2 200-300 LBS 85.00-95.00; 300-500 LBS 74.50-80.00 500-700 LBS 69.00-75.50; 700-900 LBS 60.00-65.50 900-1100 LBS 55.00-59.00.

HEIFERS; MEDIUM 1 LARGE 1 MED.&LARGE 2 300-400 77.00-83.00 85.00-90.00 75.00-80.00 400-500 72.00-75.00 --- 69.00-71.00 500-600 71.00-76.00 75.00-77.00 65.00-68.00 600-700 72.00-75.00 76.00-77.25 65.50-70.00 700-800 70.00-74.50 --- 67.00 800-900 65.00-67.00 --- FEEDER BULLS; MED. 1 MED.&LARGE 2 300-500 LBS 75.00-83.00 71.00-73.00 500-700 LBS 71.00-76.00 --- COWS WITH CALVES AT SIDE 5 PAIR; M&L-1, 5-7 YR OLD 900-1100 LBS WITH CALVES 100-350 LBS 65.00-78.50 PER PAIR. BABY CALVES RETURNED TO FARMS 23 HEAD NEWBORN TO 4 WK OLD 50.00-127.50 PER HEAD.

Shenandoah Valley Livestock

Harrisonburg, Va.
Aug. 26, 1989

Report supplied by auction
STEERS: M&L-1 300-500 LBS. 81.50-95.50; 500-700 LBS. 79.50-90.25; 700-1000 LBS. 66.00-77.50; HOLSTEIN 300-1000 LBS. 66.50-80.00. S-L&M&L-2 300-500 LBS. 74.50-88.50; 500-700 LBS. 64.50-75.00; 700-1000 LBS. 66.00-73.50.

FEEDER BULLS: M&L-1 300-500 LBS. 84.50-90.50; 500-700 LBS. 78.50-87.00. S-L&M&L-2 300-500 LBS. 77.25-82.75; 500-700 LBS. 69.50-83.00.
HEIFERS: M&L-1 300-500 LBS. 76.00-83.00; 500-700 LBS. 73.00-80.50; 700-1000 LBS. 66.50-75.00. S-L&M&L-2 300-500 LBS. 70.00-81.50; 500-700 LBS. 71.00-77.50.
STOCK COWS: BABY CALVES: SMALL 70.00-100.00; LARGE 95.00-140.00.
SLAUGHTER COWS TREND: 2.00-4.00 LOWER. UTILITY AND COMMERCIAL 2-4 45.00-49.00; CANNER AND CUTTERS 1-3 40.00-43.75.
SLAUGHTER BULLS 1&2 55.25-62.25.
LAMBS: BLUE O HIGH CHOICE AND PRIME 58.75; RED O CHOICE 55.75; FEEDER LAMBS CHOICE 66.00-70.00; SLAUGHTER EWES 13.00-14.50.
HOGS: SOWS 1-3 29.75-32.25; BOARS 22.75-25.00.
SLAUGHTER CALVES: GOOD & CHOICE CWT/100 1.05-1.28.

Valley Livestock

Athens, Pa.

Monday, Aug. 28, 1989

Report supplied by auction
HOLSTEIN HEIFER CALVES TO 125.00.
VEAL CALVES TO 92.00.
VEALER BULL CALVES TO 137.50.
SLAUGHTER CALVES 70.00-85.00.
GRASSERS & FEEDERS 45.00-70.00.
LAMBS 50.00-68.00.
SHEEP 18.00-32.00.
HOGS 200 TO 250 LBS. 38.00-46.00.
SOWS 27.00-32.00.
BOARS 24.00-26.00.
PIGS EACH 20.00-24.00.
HEIFERS 50.00-56.00.
STEERS 52.00-60.00.
FEEDER STEERS 55.00-83.00.
BULLS 50.00-58.50.
COWS GOOD 47.00-52.00.
COWS MEDIUM 46.00-48.00.
COWS POOR OR SMALL 32.00-44.00.
CATTLE MARKET STEADY.
CALF MARKET GOOD.
GOATS TO 52.50.
HORSES, SMALL, TO 325.00.

Westminster Livestock Auction

Hagerstown, Md.

Tuesday, August 29, 1989

Report supplied by auction

SLAUGHTER COWS: HIGH YIELD UP TO 53.75; UTILITY 47.00-51.00; CANNERS 44.00-48.00; SHELLY 43.00 DOWN.
BULLS: 1100-1800 LBS. YG#1 60.00-64.00; YG#2 54.00-58.00.
FED STEERS: 1000-1350 LBS. SELECT TO LOW CHOICE 62.00-67.50. FED HEIFERS: 900-1075 LBS. CHOICE UP TO 68.50; STANDARD 51.00-55.00.
VEAL CALVES: 150-300 LBS. CHOICE 90.00-104.00; GOOD 80.00-90.00; CULLS 85-120 LBS. 78.00-88.00; 50-80 LBS. 72.00-80.00; WEAK AND ROUGH 65.00 DOWN.
FARM CALVES: HOLSTEIN BULLS 10.00-15.00 HIGHER. 95-120 LBS. 120.00-143.00; 80-90 LBS. 90.00-123.00; HOLSTEIN HEIFERS 110.00-130.00; BEEF X BULLS 90.00-101.00.
BUTCHER HOGS, 60 HEAD, 1.00 LOWER. US#2 AND 3 215-240 LBS. 45.00-46.00; US#2 AND 3 240-260 LBS. 43.00-45.00; 280-320 LBS. 33.00-36.50.
SOWS: 35 HEAD, US#1 AND 3 300-700 LBS. 33.00-35.75; US#2 AND 3 31.00-33.00.
BOARS: 31.00-32.25.
STOCK CATTLE: 86 HEAD, STEERS 400-500 LBS. 79.00-87.00; 700-800 LBS. 70.00-74.00.
HEIFERS: FEED TYPE, 300-500 LBS. 75.00-87.00; 500-700 LBS. 70.00-80.00; 700-900 LBS. 60.00-70.00.
HOLSTEIN HEIFES: 50 HEAD, 150-350 LBS. 107.00-130.00; 400-600 LBS. 84.00-97.00; 600-800 LBS. 65.00-75.00.
BULLS: 200-400 LBS. 89.00-96.00; 400-600 LBS. 70.00-81.00; 600-800 LBS. 54.00-66.00.
LAMBS: 75 HEAD, CHOICE TO PRIME 80-120 LBS. 60.00-63.00; GOOD TO CHOICE 55.00-60.00; CHOICE 45-80 LBS. 55.00-70.00.
SHEEP: 20.00-32.00.

GOATS: 1 LARGE BILLY 97.00; LARGE 60.00-77.00; MEDIUM 35.00-55.00; SMALL 20.00-35.00.
PIGS AND SHOATS: 90 HEAD, 5.00 HIGHER; BY THE HEAD, 25-40 LBS. 29.00-32.00; 50-75 LBS. 28.00-40.00; 75-100 LBS. 40.00-45.00; BY THE POUND, 110-160 LBS. 40.00-48.00; 180-210 LBS. 42.00-45.00.
STOCK BOARS: 215-250 LBS. 33.00-33.50.
10 HEAD, CLOSE SPRINGING SOWS, BY THE POUND, 450-650 LBS. 44.00-52.00.

935.00-1160.00.
HERD OF 30 HEAD HOLSTEINS, 600.00-1125.00; JERSEYS, 560.00-1125.00.
LOCAL SPRINGING HEIFERS, 725.00-940.00.
SHORTBREDS, 570.00-775.00.
OPEN, 360.00-530.00.
BULLS, 710.00-810.00.
LOCAL COWS, 450.00-1175.00.

Peoria Cattle

Peoria, Illinois

Tuesday, August 29, 1989

FEDERAL-STATE WEEKLY CATTLE AUCTION ON MONDAY AFTERNOON.

RECEIPTS THIS WEEK: 183 LAST WEEK: 228.

COMPARED TO SALES THE PREVIOUS WEEK COWS MOSTLY STEADY. BULLS GENERALLY STEADY.

COWS: BREAKING UTILITY AND FEW COMMERCIAL 2-4 46.50-54.00 MOSTLY 48.00-52.00 INDIVIDUAL UTILITY 2 AT 57.50.

CUTTER AND BONING UTILITY 1-2 44.00-51.50, FEW CANNER AND LOW CUTTER 1-2 37.50-44.00.

BULLS: YG 1-2 1100-1950 LBS. 60.00-64.50.

FEEDER CATTLE: STEERS: MEDIUM FRAME 1 375-500 LBS. 90.50-92.00. 575-775 LBS. 77.50- 87.00.

HOLSTEINS: LARGE FRAME 2 850-990 LBS. 62.25-64.25.

HEIFERS: MEDIUM FRAME 1 300-450 LBS. 79.00-88.50. FEW FLESHY 636 LBS. 70.75.

Peoria Sheep

Peoria, Illinois

Tuesday, August 29, 1989

FEDERAL-STATE OPENING, MID-SESSION AND CLOSE SHEEP: 250 SLAUGHTER LAMBS MOSTLY 2.00 TO 4.00 LOWER. NO COMPARISON ON EWES FROM LAST WEEK.

WOOLED SLAUGHTER LAMBS: MIXED CHOICE AND PRIME 105-120 LBS. MOSTLY 55.00-57.00.

SHORN SLAUGHTER LAMBS: MIXED CHOICE AND PRIME 100-120 LBS. 55.00- 58.00, ONE LOT AT 60.00.

KEYSTONE MILLS "MAXI-SIL"

Proven By Research
And Local Farm
Results
To Provide:



- Faster fermentation...Promotes rapid drop in pH, which causes natural lactic acid producing organisms to grow at a higher rate.
- Less spoilage... Silage on exposed face of trench or pit silos remains palatable over a longer period of time.
- Flexible... Can be used in trench, pit, bag, or upright silos and with any forage crops used for silage.
- Cost Efficient...1 lb. of free-flowing Purina Maxi-Sil will treat a ton of silage.
- Non-corrosive... Will not damage equipment.
- Longer lasting... No refrigeration required and can be stored in any type facility.



R.D. 3
Ephrata, PA 17522
(717) 354-4616

1975 Route 336
Romulus, NY 14541
(315) 549-2578

Quality Products...Quality Service

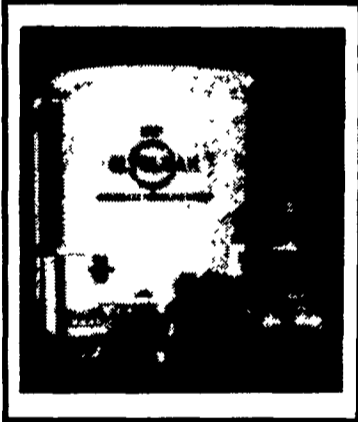
* Trademark Ralston Purina Company

MILLER DIESEL INC.

DIESEL FUEL INJECTION & TURBO CHARGER SPECIALIST
6030 Jonestown Road
Harrisburg, PA 17112
Phone 717-545-5931 - Interstate 81 Exit 26

"GLYCLEAN" ANTI-FREEZE RECYCLING SYSTEM

- RESTORES USED ANTI-FREEZE TO BETTER THAN ORIGINAL CONDITION
- REDUCES HAZARDOUS WASTE
- \$\$\$ BIG SAVINGS \$\$\$

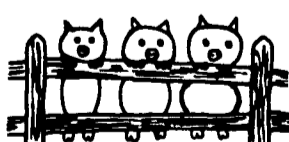


FOR COMPLETE INFORMATION, WRITE OR CALL

SOYBEAN ROASTING ON YOUR FARM

Don't Waste It - Roast It!

This Little Piggy Went To Market,
This Little Piggy Stayed Home,
This Little Piggy Had...
ROASTED SOYBEANS



Make Higher Profits From All Grains.
Roasting Improves TDN, Destroys Mold,
Retards Toxins & Removes Moisture.

CUSTOM GRAIN ROASTING
DONE IN PA. &
SURROUNDING STATES

DALE L. SCHNUPP
RD 6, Lebanon, Pa. 17042
PH: 717-865-6611

DAVID N. GROFF
RD 1 Box 506C
Lewistown, Pa. 17837
717-966-3593



ALLEN SUMMERS
703 E. Christine Rd.
Nottingham, Pa. 19362
215-932-4761