

Flower And Vegetable

(Continued from Page B2)

raw or browned in butter with brown sugar rates high on the judges charts, but will it do well on the market? Ferretti said, "Generally people are hesitant to try new vegetables.

Flower gardens.

Flowers are tested with full sunlight and under a mesh that cuts sunlight 50 percent.

Growers are currently developing impatiens that grow as well in sun as in shade. This year impatiens are doing as well in full sun as in partial shade.

"It's been an unusual year," said Dr. Robert Fortney, associate professor of floriculture. "If next year is hot and sunny, we might get different results."

In hot sun, disease in many flowers such as pansies does not take control like it does in wet, cloudy weather.

The gardens show that tuberous begonias do well from seed and more adaptable to shade and sun than those grown from bulbs.

Mary Meeker, crew group leader for the flower gardens, said, "Summer pastels is a pleasant sur-



Using flowers and vegetables from the Trial Gardens, Mary Meeker arranged artful displays of flowers.

do as much with colored foliage in landscaping as many other countries." He expects their popularity to grow as gardeners become more familiar with colored foliage.

Roses

Roses go through evaluation in

resistance? Judges also add their personal opinions such as "I hate salmon-colored roses." If too many have similar complaints, the rose is eliminated.

Scores are tallied and sent to the All American selections for ranking.

For growers or gardeners, the bottom line is the performance. The All America Selection Winners have been thoroughly tested across the U.S. and have proven superior quality.

The Penn State Flower and Vegetable Trial Gardens are operated by the Department of Horticulture, College of Agriculture and were established in the early thirties for the purpose of evaluating new varieties of plant materials. Individual seed companies and plant breeders provide seed testing and contribute financial support.

The gardens are open daily from 9 a.m. to 9 p.m. except Thursday morning for spraying.

Identify garden diseases

If you wish for a gardener to identify diseases or pests that are destroying your plants, do not

despair. Your Penn State County Extension Agent will do just that. If he cannot identify it, he will provide a kit that includes a specimen sheet. Send the completed sheet with a specimen of the infected plant to Penn State University. The diagnosis accuracy depends upon the information you supply, the plant material selected and the condition of the specimen when it arrives at the clinic.

Penn State identifies the problem and sends a letter and a fact sheet that explains how to control the problem.

Often gardeners do not differentiate between plants with insect and disease problems. "You must identify the problem before treating the affected area," John Peplinski, coordinator of the Plant Disease Clinic, said. "It doesn't do any good to spray a diseased plant with an insecticide."



Convincing people to try new vegetables is difficult, but Dr. Peter Ferretti, professor of vegetable crops, thinks the scallop squash, which can be eaten raw or cooked, should be used for more than color in the market place.

prise." The Summer Pastel collection is a dwarf yarrow with the mature plant reaching about 2 feet tall and 18 inches wide. They flower in four months from seed. The flowers provide an improved color range of pinks, apricots, cream, reds, lavenders, purples and pure white. They offer superior performance in the garden, but Meeker said her experiments show that Summer Pastels do not dry as well as the traditional yarrow.

Fortney suggests that home gardeners rotate flowers every three years to eliminate problems with disease and insects.

A performance record of all plants and flowers is available from Penn State.

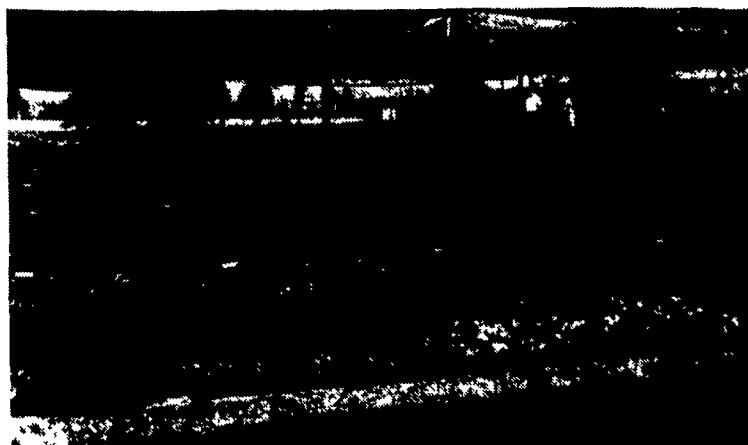
Among the more common flower varieties are Amaranthus from Calcutta, India, which shows the beauty of colored foliage.

Fortney said, "The U.S. does not

test gardens across the U.S. These gardens evaluate roses that are unnamed. Dr. Charles Heuser, associate professor of horticultural physiology, said, "Out of a group of 50, only one to three are selected for marketing. The remainder are destroyed."

The roses are evaluated in two-year cycles to show how they weather the first and second winter.

In roses, gardeners look for novelty, color when in bud and in open bloom, bud and flower form and their aging quality. Aging gracefully refers to self-shattering petals that fall off rather than brown on the plant. Fragrance is also noted. Are stem clusters long enough to put in vase? Is the plant habit compact with lots of foliage. Does the color of foliage show gloss or do yellowing leaves detract from the rose. Is it disease



Trial gardens are grown in full sun and under mesh canopies that cuts the sun by 50 percent.



Have You Heard?

By Doris Thomas

Lancaster Extension
Home Economist

Removal of Crayon From A Load Of Wash

I occasionally receive a phone call from a consumer faced with the horrible experience of a load of clothes coming out of the washer or dryer laden with red, green, blue or black marks. This unfortunate situation is the result of a crayon which was overlooked in the pocket of one of the articles. Crayons melt in the dryer and transfer onto almost everything in the wash load.

One of the most effective methods for removal of such stains, according to the International Fabricare Institute of America, is to first hang the garments up and allow them to dry completely. The use of a dry-cleaning solvent will very often remove the stain, and it may be cost effective to have the entire load of clothes cleaned in a coin-op dry-cleaning machine. Another possible method is to pretreat the stains with one of the popular spray and wash products as they do contain some solvents. However, if the articles are extensively stained, it would be best to have them cleaned in a coin-op and then possibly later rewashed for the most effective method of removal.

Collision Damage Waiver Not A Must

Collision damage waiver (CDW) on a rental car - do you need it? It can add \$10 to \$14 each day to your car rental fee and may not be necessary.

Driving a rental car exposes you to personal property and lia-

bility risks. The collision damage waiver agreement assures you the car rental company will pay for damages to the rented car. However, you are probably protected through your automobile insurance. If you are already covered, the CDW is an unnecessary expense, because it is double insurance.

Check with your insurance agent to determine the collision and liability coverage as applied to rental cars. When you know what protection is available from your policy, it reduces the possibility of overpayment for a rental car.

Read the fine print in auto rental contracts; most say you are liable if you drive recklessly, abuse the car, drive under the influence of drugs (including alcohol) and/or fail to lock the car.

Some credit card companies protect their card holders when they charge the car rental with them. Check your credit card information to see if you have this coverage available to you.

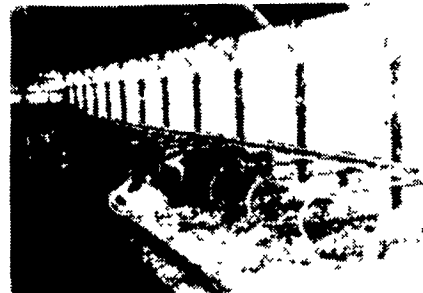
Larger car rental firms cover fire or natural occurrence damage while small rental companies may not.

The confusing nature of rental car insurance is requiring regulator action. The collision damage waiver's future is probably limited. Illinois and New York have passed laws placing a cap on charges a rental car consumer must pay for auto damages. Other states are considering similar legislation.

PAUL B. **Zimmerman** INC.

LOOP STALLS

All Loop Stalls Are Coated With Baked On Thermoset Epoxy Powder Coating After Fabrication



- Super Tough Finish
- Protection From Rust & Corrosion
- Superior Electrical Insulation
- Chip Resistant
- Resists Acid & Chemicals
- Smoother Finish Stays Cleaner

Zimmerman Loop Stalls Are Constructed of:

- 2 3/8" Outside Diameter High Yield Steel Tubing With A 12 Gal. (.108) Wall
- Spray Arc Transfer Method Used On Welds

