

Belleville Livestock Auction

Belleville, Pa.

Wednesday, August 23, 1989

Report Supplied by PDA

CATTLE 105...PDA... Compared with last week's market: Select holstein heifer, individual at 57.75. Few Breaking Utility and Commercial sl. cows 47.00-49.50, Cutter and Boning Utility 47.75-51.85, one 53.00, Canner & low Cutter 43.50-47.00, Shells down to 38.50. Few Yield Grade No. 1, 1125/1575 lbs. slaughter bulls 55.35-60.10.

CALVES 148... One Choice vealer 91.00, Standard and Good 70/100 lbs. 75.00-85.00, Utility 60/80 lbs. 70.00-75.00. Farm Calves: Holstein Bulls No. 1, 90/130 lbs. 110.00-135.00, No. 2, 85/130 lbs. 82.00-117.00, few Hol. Heifers 90/125 lbs. 90.00-111.00.

HOGS 150... US No. 1-2 225/245 lbs. barrows and gilts 48.85-49.25, (3 head 50.00), 1-3 210/250 lbs. 47.75-48.60. US No. 1-3 330/630 lbs. sows 28.50-36.00. Boars 26.00-30.50.

FEEDER PIGS 225... US No. 1-3 20/35 lbs. feeder pigs 10.00-16.00, 35/50 lbs. 14.00-25.00 --- all per head.

SHEEP 35... Few Choice 50/80 lbs. spring slaughter lambs 57.00-67.00, Good & Choice 70/115 lbs. 49.00-55.00. Few Slaughter ewes 17.00-29.00.

GOATS 34... Large 44.00-59.00, Medium 30.00-44.00 --- all per head. **HOLSTEIN DAIRY COWS** - \$600.00-\$1250.00, COUPLE \$1425.00 - PER HEAD.

Leesport Livestock Auction

Leesport, Pa.

Wednesday, August 23, 1989

Report Supplied by PDA

CATTLE 257...PDA... Supply included 11 Feeder Cattle ...Compared to last Wednesday's market: Slaughter steers strong to \$1.50 higher; Cows unevenly steady. Couple High Choice & Prime 74.00&75.00, Choice 1050/1400 lbs. 64.00-73.50, Select 67.75-71.00, few 72.75; Choice 1200/1350 lbs. Holsteins 63.50-65.50, one Prime 68.75, Select 62.75-64.75, Standard 57.00-62.25. Few Choice sl. heifers 65.00-69.75, few Select 63.50-64.50, few

Select Holsteins 59.75-65.25, few Standard 51.25-54.25. Breaking Ut. & Commercial sl. cows 48.25-53.75, couple 56.00, Cutter & Bon. Utility 48.00-52.25, few 54.00, Canner & Low Cutter 46.75-49.00, Shells down to 42.00. Few Select & Choice sl. bullocks 63.25-66.75, few Standard 58.00-61.75; Select & Choice Holsteins 59.75-63.50. Few Yield Grade No. 1, 1240/1750 lbs. sl. bulls 58.00-66.00, one 69.00, few No 2, 850/950 lbs. 53.25-55.00.

CALVES 210... Vealers \$4 to \$5 higher. Couple Choice 96.00&109.00, couple Good 87.00&91.00, Standard & Good 85/110 lbs. 89.00-92.50, 70/85 lbs. 85.00-89.50, few Utility 90/115 lbs. 85.00-89.00, few 55/80 lbs. 60.00-71.00. Farm Calves: Holstein Bulls No. 1, 95/125 lbs. 117.00-134.00, No. 2, 90/120 lbs. 91.00-120, 85/90 lbs. 90.00-95.00, few Holstein 95/125 lbs. heifers 95.00-125.00; Beef Cross 90/130 lbs. Bulls and Heifers 95.00-130.00; few Slaughter Calves 275/525 lbs. 70.00-75.00.

HOGS 356... Barrows and Gilts steady to .50 higher. US No. 1-2 215/255 lbs. 47.00-48.50, 1-3 205/265 lbs. 46.60-47.35, 2-3 215/285 lbs. 46.00-46.85, lot 2-4 315 lbs. 43.35, lot 1-3 160 lbs. 44.50. Sows \$2 to \$4 higher. US No. 1-3 300/575 lbs. sows 35.75-36.75, few 38.75, few 2-3 400/635 lbs. 34.50-36.00, few Medium 250/400 lbs. 30.00-34.50. Boars 33.25-34.25.

FEEDER PIGS 205... Lot US No. 1-3 20 lbs. feeder pigs 20.00 per head; few 20/30 lbs. 65.00-92.50, 30/50 lbs. 60.00-74.00, 2-3 30/100 lbs. 51.00-62.00, lot Utility 20 lbs. 55.00 --- all per hundredweight.

SHEEP 47... Choice 70/105 lbs. spring slaughter lambs 59.00-63.00, few 68.00, few 125/140 lbs. 49.00-54.00, few Good & Choice 45/60 lbs. 81.00-110.00. Few Slaughter ewes 22.00-35.00.

GOATS 19... Large adult 60.00-66.00, Large kids 35.00-57.50, few small Kids 30.00-33.00 --- all per head.

Belknap Livestock Auction

Dayton, Pa.

Wednesday, August 23, 1989

Report Supplied by PDA

SALE NOT REPORTED.

Dewart Livestock

Dewart, PA

August 21, 1989

CATTLE 142...PDA... Compared with last Monday's market: One Choice Holstein steer 64.50, few Select 59.75-64.00. Couple Choice sl. heifers 67.25-67.75, few Select & Choice Holsteins 61.00-63.00. Few Breaking Utility & Commercial sl. cows 47.00-48.75, Cutter & Bon. Utility 46.75-50.00, couple 52.50, Canner & Low Cutter 43.00-46.75, shells down to 38.00. Few Yield Grade No. 1, 930/1620 lbs. sl. bulls 55.25-63.75. Feeder Cattle: Few Medium Frame No. 1, 300/670 lbs. heifers 64.00-75.00.

CALVES 217... Few Choice vealers 94.00-96.00, few Good 84.00-89.00, Standard & Good 70/100 lbs. 86.00-94.00, Utility 60/90 lbs. 78.00-88.00. Farm Calves: Holstein Bulls, No. 1-2, 90/130 lbs. 100.00-125, few 130.00. Hol. Heifers 90/130 lbs. 95.00-129.00.

HOGS 39... Lot US 1-3 215 lbs. barrows and gilts 47.00, lot 235 lbs. 48.50. US No. 1-3 400/645 lbs. sows 33.25-36.25, couple 39.00. One Boar 26.50.

FEEDER PIGS 86... Few Lots US No. 1-3 25/30 lbs. feeder pigs 14.00-21.50, few lots 45/60 lbs. 24.00-25.50 --- all per head.

SHEEP 3... No Market Test.

GOATS 0... No Market Test.

New Wilmington Livestock

N. Wilmington, PA

August 21, 1989

CATTLE 243...PDA... Compared with last Monday's market: Slaughter cows fully steady. Select & low Choice slaughter steers 65.00-68.75, Standard 57.00-63.50. Few Standard sl. heifers 55.75-60.00. Breaking Utility & Commercial sl. cows 48.00-52.25, few 54.00-55.25, Cutter & Boning Utility 46.50-51.00, few high dressing 53.25, Canner & Low Cutter

39.75-47.00, Shells down to 29.50. Yield Grade No. 1, 1345/2085 lbs. sl. bulls 58.50-64.00, few No. 2, 965/1635 lbs. 53.25-56.75. Feeder Cattle: Few Medium & Large Frame No. 1, 300/490 lbs. steers 83.00-91.00, couple 108.00&109, few 670/825 lbs. 64.50-75.00. Medium & Large Frame No. 1, 300/400 lbs. heifers 75.00-90.00, 520/720 lbs. 58.00-71.00.

CALVES 258... Couple Choice vealers 102.50-110.00, few Good 88.00-96.00, Standard & Good 90/120 lbs. 79.00-87.00, 60/85 lbs. 57.50-80.00, Utility 50/70 lbs. 40.00-48.00. Farm Calves: Hol. Bulls 90/135 lbs. 95.00-125.00, No. 2, down to 85.00, 80/85 lbs. 80.00-87.00; Hol. Heifers 95/120 lbs. 95.00-120.00. Beef cross 80/135 lbs. bulls & heifers 83.00-125.00, 135/190 lbs. 88.00-110.00.

HOGS 436... Barrows and gilts .50 to \$1 lower. US No. 1-2 230/250 lbs. 47.50-48.25, 1-3 215/260 lbs. 46.00-47.50, 1-3 190/220 lbs. 39.50-46.00. Sows mostly steady. US No. 1-3 320/600 lbs. sows 32.00-37.00, 290/330 lbs. 28.00-32.00. Boars 31.50-35.00.

FEEDER PIGS 34... US No. 1-3 20/35 lbs. feeder pigs 7.00-19.00, 35/50 lbs. 15.00-26.00 --- all per head.

SHEEP 152... High Choice & Prime 65/115 lbs. spring sl. lambs 64.00-69.00, Choice 65/95 lbs. 58.00-65.00; Good & Choice 50/75 lbs. feeder lambs

45.00-58.00. Slaughter ewes 12.00-19.00. **GOATS 24...** Medium and Large 24.00-45.00, one 70.00, fe Small 20.00-24.00 --- all per head.

New Holland Horses

New Holland Sales Stables

New Holland, PA

Monday, Aug. 21, 1989

REPORT SUPPLIED BY AUCTION REGISTERED RECEIPTS OF 291 HEAD OF HORSES, MULES AND PONIES. MARKET STEADY.

DRIVING HORSES 450.00-1300.00. RIDING HORSES 375.00-750.00. LIGHTWEIGHT KILLERS 210.00-410.00. HEAVYWEIGHT KILLERS 450.00-650.00.

MARES 40.00-100.00. COLTS 20.00-50.00. GELDINGS 40.00-100.00. LARGER PONIES 140.00-350.00.

Estimated Daily Livestock Slaughter

Under Federal Inspection

August 23, 1989

	CATTLE	CALVES	HOGS	SHEEP
WED., 8/23/89 (EST)	127,000	9,000	314,000	23,000
WEEK AGO (EST)	126,000	9,000	312,000	23,000
YEAR AGO (ACT)	128,000	10,000	313,000	20,000
WEEK TO DATE (EST)	361,000	25,000	940,000	60,000
SAME PD LT WK (EST)	371,000	25,000	929,000	61,000
SAME PD LT YR (ACT)	382,000	29,000	910,000	58,000

HOG PRODUCTION Products And Programs

FEEDS

- * KM Complete Feeds
- * KM Concentrates
- * KM Base Mixes
- * Custom Formulated Feeds
- * Purina Complete Feeds
- * Purina Concentrates

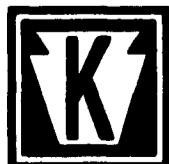
GENETICS

- * P.I.C. Genetics
- Camborough 15 Gilts • HY Boars
- Line 26 Boars

PROGRAMS

- * Pigtales - Record Keeping System
- * Service Programs - Management Advice
- * Sow Contracts
- * Finishing Contracts
- * Supplying Quality Feeder Pigs With PIC Genetics
- * Clean and Sanitized Trucking

Call - The Keystone Mills Hog Group - Today



KEYSTONE MILLS

Serving Agriculture Since 1894

R.D. 3
Ephrata, PA 17522
(717) 354-4616

1975 Route 336
Romulus, NY 14541
(315) 549-2578

MILLER DIESEL INC.

DIESEL FUEL INJECTION & TURBO CHARGER SPECIALIST

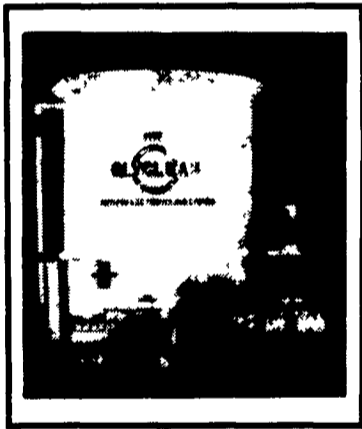
6030 Jonestown Road

Harrisburg, PA 17112

Phone 717-545-5931 - Interstate 81 Exit 26

"GLYCLEAN" ANTI-FREEZE RECYCLING SYSTEM

- RESTORES USED ANTI-FREEZE TO BETTER THAN ORIGINAL CONDITION
- REDUCES HAZARDOUS WASTE
- \$\$\$ BIG SAVINGS \$\$\$



FOR COMPLETE INFORMATION, WRITE OR CALL

Announcing Our New Location



Serving Farmers Some Way... Every Day...

- Cash Grain Merchandising
- Cash Feed Stuff Sales
- Livestock Forward Pricing
- Grain Forward Pricing
- Fertilizer Sales
- Full Service Future Brokerage
- Market Consulting

PACMA, INC.

475 E. High St.

P.O. Box 206

Palmyra, PA 17078

Phone 1/717/838-7060
In PA 1/800/PACMA INC

Out Of State 1/800/783-3647
Fax 717/838-7060

PACMA Inc Is Not An Affiliate Of PFA