

'86 Ford F250, 1/2 ton, 4x4, 300 6 cylinder, 4 spd., PS, PB, lock-out hubs, new radials, excellent condition, \$8,975. 717-733-2873

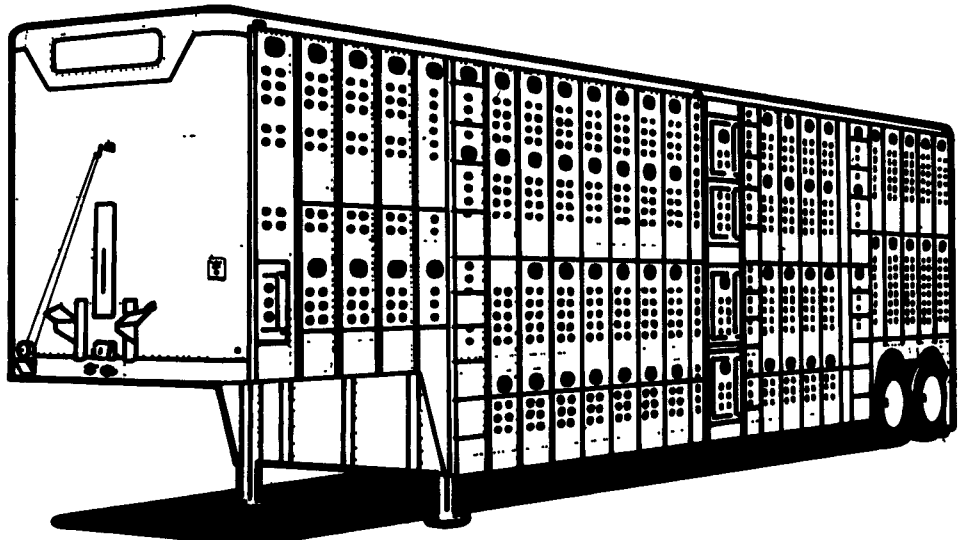
'86 Ford F150 1/2 ton pickup, 300 6 cylinder, HD, 4 spd., PS, PB, AM-FM, charcoal, excellent condition, \$5,450. 717-733-2873

'86 Ford XL F150 Super Cab, 300 6 cylinder, auto., PB, PS, AM-FM, dual tanks, 6,250 GVW, excellent condition, \$8,600. 717-733-2873

'87 Chevy HD C20 w/new Reading utility body w/ enclosed roof, 350, auto., PB, PS, AM-FM, 15,000 miles, like new, \$12,900. 717-733-2873

The "Silver Star"

BY WILSON... THE ULTIMATE IN LIVESTOCK TRANSPORTATION



- Superior Strength in Critical Areas — King Pin, Tandem, etc
- Fastener Design Allows Flexing Without Cracking
- Unequaled Quality in Gate Hardware
 - Tubular Framed Outer & Inner Gates
 - Secure & Easy-Operating Latches
 - Wrap-Around Gate Hinges with Grease Fittings.
- Lighter in Weight Than Slatted Models Without Sacrificing Strength.

- Standard Features:
 - Counter-Balanced Ramps, Dog House, Fold-To-Corner Bull Bar, Wiring Harness, Outboard Hubs, Plus Many More
- Variety of Available Optional Hole Patterns
- Options Tailored to Meet Your Individual Needs.
- Best Resale Value in the Industry.
- Lowest Cost of Ownership.
- 100 Years Experience in Building Quality & Value

WILSON TRAILER COMPANY
4400 South Lewis Boulevard
Sioux City, Iowa 51106



CALL TOLL FREE 1-800-852-0006
in Iowa Call (717)943-5591
Ask For Sales Department

Since 1890... A Good Name To Have Behind You!

MORITZ "N" TOP CAT STOCK & HORSE TRAILERS

IN STOCK!

- 12 Foot Bumper
- 14 Foot Bumper
- 16 Foot Gooseneck
- 18 Foot Gooseneck

Rt. 501, 1 1/2 Miles South of Schaefferstown, PA
PHONE: (717) 949-8817 or 949-2549
MARTIN HARDWARE & EQUIPMENT CO. INC.
Mon. & Wed. 8 To 5; Tues., Thurs., Fri. 8 To 8;
Sat. 8 To 4

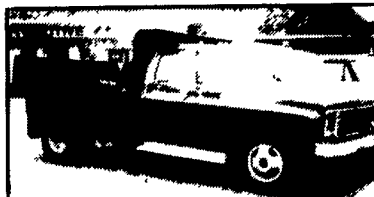
1987 Ford F350 diesel, 5 speed, w/12' Leister cattle body. (703)729-0512.

'74 Kenworth CEO, 13 speed, 4 bag air ride, needs motor work, rest of truck in good condition. 717-862-3372.

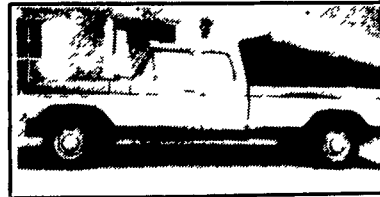
'78 Jeep J20 1/2 ton 4x4, V8, auto., PB, PS, AM-FM, mechanically good, \$1,275. 717-733-2873

'86 Chevy C30 Silverado, dual whl. pickup, 454 auto., PS, PB, air, AM-FM cassette stereo, 19,000 miles, 2 tone blue, like new, \$12,500. 717-733-2873

LEBANON COUNTY'S FOREMOST TRUCK SPECIALIST



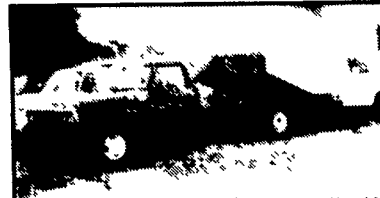
'79 C-30 CHEVY DUMP
454, AT, PS, PB, A/C, 40K
\$9,495



'78 FORD F-250 XLT DUMP
V-8, AUTO, PS, PB
\$4,995



'79 DODGE POWER WAGON
STAKE BODY 4x4, 24,000 ORIG.
MILES, AUTO, PS, PB, 318 V8
\$5,895



'79 FORD F-350 TILT-BACK
V-8, 4 SPEED, PS, PB,
FULL HYD. BED, VERY NICE



OVER 90 CARS
& TRUCKS IN
STOCK

CALL BOBBY GERHART
AT: (717) 273-7995
5 POINTS
LEBANON, PA

SAVE BIG BUCKS ON TRUCKS

OVER 30 USED TRUCKS IN STOCK ALWAYS

CALL US TOLL FREE 1-800-642-8605

WE'LL SERVICE YOUR TRUCK WHILE YOU'RE AT THE SALE BARN. CALL TOM AT: (717) 354-4901

AUTHORIZED CATERPILLAR & CUMMINS SERVICE & PARTS DEALER

1989 FORD F-250 4x4
Pickup, 6 cyl., 4 spd. trans., overdrive, PS, PB, AM-FM stereo, radial tires, convenience group, aux. fuel tank, handling package, headliner/insulation package, low mount mirrors, tach., sliding window, sport wheelcovers, chrome rear step bumper, spare wheel
\$12,527
ST #9332

1989 FORD F SUPERDUTY Cab & Chassis
V8, 5-spd. trans., overdrive, PS, PB, AM-FM stereo, radial tires, tach., chrome grille, headliner/insulation, super engine cooling, aux. fuel tanks, 161 in. wheelbase, 14,500 GVW.
\$14,315
ST #9326

1989 FORD F-350 4x4
V8, 5 spd. trans., PS, PB, AM-FM stereo, all terrain radial, Eby flat bed, headliner/insulation, handling package, super engine cooling, aux. fuel tanks, tach., chrome grille.
\$18,474
ST #8991

1989 FORD F-800 DUMP TRUCK
PS, AM-FM stereo, diesel, 210 horsepower, 5 speed, 2 speed rear, air brakes, tinted glass, 50 gal. fuel tanks, western mirrors, instrumentation group, 33,000 GVW, 10 ft. dump body.
\$36,349
ST #8080

1989 FORD LN 8000 Grain Truck
PS, AM-FM stereo, 210 HP diesel, 5 spd. two speed rear, air brakes, tinted glass, 50 gal. fuel tanks, western mirrors, 17 ft. Eby grain body.
\$42,164
ST #8078

1988 FORD CF 7000 C/C
170 HP turbo, diesel, 5 speed, two speed rear, 40 gal. right and left hand tank, exhaust brake, 29,500 GVW.
\$24,997
ST #2469

Prices Include Ford Rebates Where Applicable. Tax & Tags Additional.

NEW HOLLAND



CATERPILLAR
TRUCK CENTER

