

**Shenandoah Valley Livestock**

Harrisonburg, Va.  
Aug. 12, 1989

Report supplied by auction

STEERS: M&L-1 300-500 LBS. 95.00-110.00; 500-700 LBS. 75.50-99.00; 700-1000 LBS. 69.50-80.00; HOLSTEIN 300-1000 LBS. 61.00-79.50.

S-L&M&L-2 500-700 LBS. 69.00-86.50; 700-1000 LBS. 65.00-73.50. FEEDER BULLS: M&L-1 300-500 LBS. 85.00-97.50; 500-700 LBS. 78.00-87.00; 700-800 LBS. 71.00-76.00.

S-L&M&L-2 300-500 LBS. 80.00-88.50; 500-700 LBS. 69.50-75.00. HEIFERS: M&L-1 300-500 LBS. 83.00-89.50; 500-700 LBS. 72.50-80.00; 700-1000 LBS. 63.00-75.25.

S-L&M&L-2 300-500 LBS. 72.00-85.50; 500-700 LBS. 69.00-72.00; 700-1000 LBS. 62.00-71.00.

STOCK COWS: BEEF: 685.00; PAIRS 700.00-840.00; DAIRY 710.00-800.00 SPRINGERS.

SLAUGHTER COWS, FEW HIGH YIELDING COWS 51.50-53.25; UTILITY AND COMMERCIAL 2-4 46.00-51.50; CANNER AND CUTTERS 1-3 44.00-47.25.

SLAUGHTER BULLS 1 & 2 58.00-62.75.

LAMBS: BLUE O HIGH CHOICE AND PRIME 60.00; RED O CHOICE 59.50; FEEDER LAMBS CHOICE 63.75-64.50; SLAUGHTER EWES 17.50-19.75.

HOGS: US 1-3 200-240 LBS. 46.10; SOWS 1-3 28.75-32.75; BOARS 24.00.

SLAUGHTER CALVES: GOOD AND CHOICE 85.00-110.00.

**Frederick Livestock Auction**

Frederick, Md.

Monday, Aug. 14, 1989

Report Supplied by Auction

BUTCHER COWS: ACTIVE, 1.50 HIGHER. HIGH YIELD 51.00-53.50; STANDARD AND UTILITY 47.00-51.00; CANNERS 45.00-48.00; SHELLY 45.00 DOWN.

BULLS: YG#1 60.00-63.25; YG#2 54.00-59.00; STEERS, FEW STANDARD 58.00-62.00; HEIFERS, SELECT, 1 AT 64.25; COMMERCIAL 53.00-57.00.

BUTCHER HOGS: 150 HEAD, 75 CENTS HIGHER, #1-3 215-250 LBS. 46.75-48.00; #2 AND 3 240-260 LBS.

42.00-46.00; 1 LOT 206 LBS. TO 46.00. SOWS: 1.00 HIGHER, 300-600 LBS. 33.50-35.25; THIN SOWS 28.00-32.00. HEAVY BOARS: 31.50-32.50.

VEAL CALVES: MAINLY LIGHT-WEIGHTS, ONCE CHOICE 245 LBS. AT 102.00; GOOD 85.00-95.00; CULL CALVES, 5.00 HIGHER, 85-115 LBS. 80.00-89.00; 50-80 LBS. 70.00-82.00; WEAK AND ROUGH 65.00 DOWN.

CALVES RETURNING TO FARM: PRICES LOWER. HOLSTEIN HEIFERS, BEEF X BULLS 85.00-103.00; 90-120 LBS. 95.00-110.00; HOLSTEIN BULLS 85-90 LBS. 85.00-95.00; 95-120 LBS. 95.00-107.00.

LAMBS: 60 HEAD CHOICE 70-120 LBS. 60.00-64.50; GOOD 55.00-60.00; FEEDERS 50-60 LBS. 63.00-65.00. SHEEP: FAT 18.00-20.00.

STOCK CATTLE: SCARCE. STEERS, FEW 500-600 LBS. 75.00-78.50; 1 800 LB. AT 71.50; HEIFERS FEW 500-700 LBS. TO 65.00; 1 HOLSTEIN 350 LBS. 72.50; BULLS, 1 RED ANGUS 830 LBS. AT 61.50; DAIRY COWS, SMALL TO 58.50.

PIGS AND SHOATS: 100 HEAD, BY THE HEAD 20-30 LBS. 15.00-23.00; 2 LOTS 50-75 LBS. 31.00-38.00; BY THE POUND, 140-180 LBS. 32.00-36.00; BOARS 250 LBS. TO 32.75.

**Keister's Middleburg Auction**

Middleburg, Pa.

Monday, August 15, 1989

Report Supplied by Auction

CATTLE 413...REPORT SUPPLIED BY THE AUCTION...High Choice & Prime slaughter steers 71.00-74.10, few YG #4 68.00-71.00, Choice 68.00-73.75, Select 65.00-67.75; Choice holsteins 65.00-69.35, Select 62.00-64.75, Standard 58.00-61.75. Choice sl. heifers 65.00-70.10, Select 63.00-64.75, Standard 58.00-62.75. Breaking Utility & Commercial sl. cows 49.00-54.00, few 56.50, Cutter & Boning Utility 48.50-53.75, Canner & low Cutter 45.00-48.25, Shells down to 42.00. Choice sl. bullocks 65.00-68.50, Select 60.00-64.75. Yield Grade No. 1, 1200/1860 lbs. sl. bulls 58.75-65.50. FEEDER CATTLE: Medium Frame No. 1, 350/750 lbs. steers 65.00-86.00. Medium Frame No. 1, 350/750 lbs. heifers 60.00-75.00.

CALVES 234...Choice vealers 92.00-110.00, Standard and Good 90/110 lbs. 65.00-85.00, 60/90 lbs. 60.00-75.00. Farm Calves: Holstein Bulls No. 1, 90/125

lbs. 90.00-112.00, Hol. Heifers 100/125 lbs. 100.00-120.00.

HOGS 406...US No. 1, 225/245 lbs. barrows and gilts 49.00-50.75, 1-2 225/250 lbs. 48.50-48.75, 1-3 200/210 lbs. 42.00-47.00, 2-3 200/275 lbs. 42.00-46.75. US No. 1-3 300/700 lbs. sows 34.00-38.50, 2-3 300/750 lbs. 31.00-36.50. Boars 31.00-34.25.

FEEDER PIGS 455...US No. 1-3 20/35 lbs. feeder pigs 15.00-27.00, 35/50 lbs. 22.00-32.00, --- all per head.

SHEEP 58...Choice 80/110 lbs. spring slaughter lambs 65.00-70.00, few 40/55 lbs. 81.00-125.00, Good 50/80 lbs. 58.00-68.00. Slaughter ewes 15.00-32.00.

GOATS 33...Large 55.00-80.00, Small 25.00-55.00 --- per head.

**Valley Livestock**

Athens, Pa.

Monday, Aug. 14, 1989

Report supplied by auction

HOLSTEIN HEIFER CALVES TO 107.50.

VEAL CALVES TO 90.00. VEALER BULL CALVES TO 127.50. SLAUGHTER CALVES 65.00-80.00.

GRASSERS & FEEDERS 45.00-70.00. LAMBS 55.00-69.00.

SHEEP 15.00-32.00. HOGS 200 TO 250 LBS. 38.00-45.50.

SOWS 24.00-32.00. BOARS 23.00-25.50.

PIGS EACH 12.00-24.00. HEIFERS 50.00-54.00.

STEERS 52.00-61.50. FEEDER STEERS 50.00-84.00.

BULLS 48.00-64.00. COWS GOOD 47.00-53.50.

COWS MEDIUM 45.00-47.00. COWS POOR OR SMALL 32.00-44.00.

CATTLE MARKET ACTIVE.

CALF MARKET STEADY.

GOATS TO 62.50.

HORSES, EACH, TO 190.00.

MARKET STEADY WITH LAST WEEK.

**Peoria Cattle**

Peoria, Illinois

Thursday, August 17, 1989

CATTLE SUMMARY COMPARED WITH LAST MONDAY SLAUGHTER STEERS AND HEIFERS STEADY TO .25, INSTANCES .50 HIGHER. AT THE COW AND BULL AUCTION SALES GENERALLY UNCHANGED FROM LAST WEEK. SUPPLY MAINLY SELECT AND CHOICE SLAUGHTER STEERS AND HEIFERS WITH ABOUT 6% COWS. RECEIPTS THIS WEEK ABOUT 1500 AS COMPARED WITH 1102 A WEEK AGO AND 1410 A YEAR AGO.

SLAUGHTER STEERS: CHOICE 2-4, MOSTLY 2-3 1050-1300 LBS. 70.50-72.00, MIXED SELECT AND CHOICE 2-3 1000-1250 LBS. 67.50-70.50. SELECT 2-3 950-1100 LBS. 65.00-68.00. PKG SELECT, FEW CHOICE 2-3 1414 LBS. HOLSTEINS 64.50.

SLAUGHTER HEIFERS: CHOICE 2-4 900-1200 LBS. 69.50-71.00, FEW AROUND 1100 LBS. 71.50. 800-950 LBS. 66.00-69.00 SELCT AND CHOICE 2-3 900-1050 LBS. 65.00-67.00. SELECT 2-3 800-1000 LBS. 63.00-65.00.

COWS: BREAKING UTILITY AND FEW COMMERCIAL 2-4 46.00-52.00, FEW UTILITY 2 52.25-53.50. CUTTER AND BONING UTILITY 1-2 45.00-52.00, FEW HIGH DRESSING 52.50-53.50. CANNER AND LOW CUTTER 1-2 40.00-45.50, FEW 31.00-32.00.

BULLS: YG 1-2 57.00-63.50, INDIVIDUAL 1 2005 LBS. 68.00.

**St. Louis Cattle, Hogs**

Thursday, August 17, 1989

OPENING MID-SESSION WEEKLY CLOSE.

CATTLE AND CALVES: 475 ( 25 SLTR, 450 FDRS).

SUPPLY CONSISTS OF FEEDER CATTLE AND COWS FOR REGULAR THURDAY'S AUCTION.

NO SLAUGHTER CATTLE SALES REPORTED.

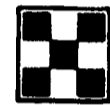
COWS: CUTT, UTIL, COMM BULK SALES HI-DRESS % LO-DRESS % BREAKING 2-4 NO TEST, BONING 1-2 NO TEST, LOW TO AVG CUTTER NO TEST.

BULLS: YG 1-2 NO TEST.

RECEIPTS THIS WEEK 1,400: WEEK AGO 1,400: YEAR AGO 1,600

FOR THE WEEK, SLAUGHTER STEERS MOSTLY .50 HIGHER, EXCEPT HOLSTEIN STEERS 1.00-1.50 HIGHER. SLAUGHTER HEIFERS MOSTLY .50, INSTANCES 1.00 HIGHER.

COWS FULLY 4.00 HIGHER. BULLS FULLY STEADY. SLAUGHTER SUPPLY MAINLY CHOICE AND MIXED SELECT AND CHOICE STEERS AND HEIFERS, AROUND 10% COWS.



**Purina®**

**CALF PURA-LYTE®**  
BRAND

**What It Is** - A water soluble powder, high in energy and essential electrolytes, with superior absorption characteristics for rapid response.

**What It Does** - Aids in replacement of normal body fluids and electrolytes and for energy-rich nutritional support in young calves with diarrhea.



**Helps Keep Calves Healthy And Growing**

Call - The Keystone Mill Dairy Group - Today



**KEYSTONE MILLS**

—Serving Agriculture—Since 1894—



R.D. 3  
Ephrata, PA 17522  
(717) 354-4616

1975 Route 336  
Romulus, NY 14541  
(315) 549-2578

Quality Products - Quality Service

★ Trademark Ralston Purina Company



**MILLER DIESEL INC.**

DIESEL FUEL INJECTION & TURBO CHARGER SPECIALIST

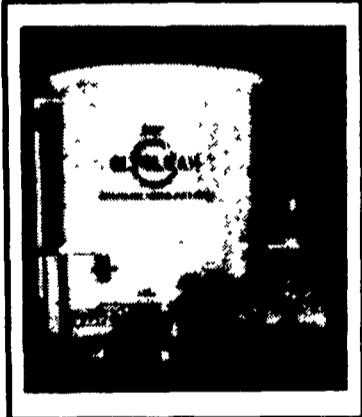
6030 Jonestown Road  
Harrisburg, PA 17112

Phone 717-545-5931 - Interstate 61 Exit 26

**"GLYCLEAN"**

ANTI-FREEZE RECYCLING SYSTEM

- RESTORES USED ANTI-FREEZE TO BETTER THAN ORIGINAL CONDITION
- REDUCES HAZARDOUS WASTE
- \$\$\$ BIG SAVINGS \$\$\$



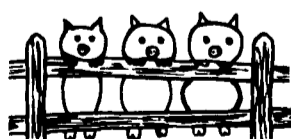
FOR COMPLETE INFORMATION, WRITE OR CALL

**SOYBEAN ROASTING ON YOUR FARM**

Don't Waste It - Roast It!

This Little Piggy Went To Market,  
This Little Piggy Stayed Home,  
This Little Piggy Had...

ROASTED SOYBEANS



Make Higher Profits From All Grains.  
Roasting Improves TDN, Destroys Mold,  
Retards Toxins & Removes Moisture.

CUSTOM GRAIN ROASTING  
DONE IN PA. &  
SURROUNDING STATES

**DALE L. SCHNUPP**  
RD 6, Lebanon, Pa. 17042  
PH: 717-865-6611

**DAVID N. GROFF**  
RD 1 Box 506C  
Lewisburg, Pa. 17837  
717-966-3593



**ALLEN SUMMERS**  
703 E. Christine Rd.  
Nottingham, Pa. 19362  
215-932-4761