

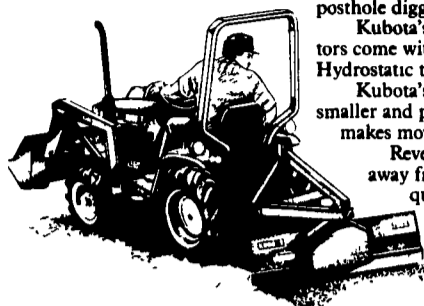
# SCRAPE, DIG, PULL, LOAD, MOW AND MORE



Estate owners, landscapers and farmers will appreciate the Kubota B-50 Series' wide choice of handy implements. These include mid and rear mount

mowers, front loaders, boxscrapers, backhoes, posthole diggers, snowblowers, even rotary tillers. Kubota's remarkable B-50 Series compact tractors come with mid and 2-speed rear PTO. Optional Hydrostatic transmission From 17-24 HP. Kubota's optional "Bi-Speed Turn" system allows smaller and precise turns in 4-Wheel Drive, which makes mowing, and even loading more efficient. Reverse air flow cooling directs radiator heat away from the operator for a comfortable, quiet ride. Low piston speed extends engine life.

The Kubota B-50 Series. Versatile compact tractors.



**2.75%  
FINANCING  
AVAILABLE!**



Nothing like it on earth.™

See Us For:

- ★ SALES      ★ RENTALS
- ★ PARTS     ★ SERVICE

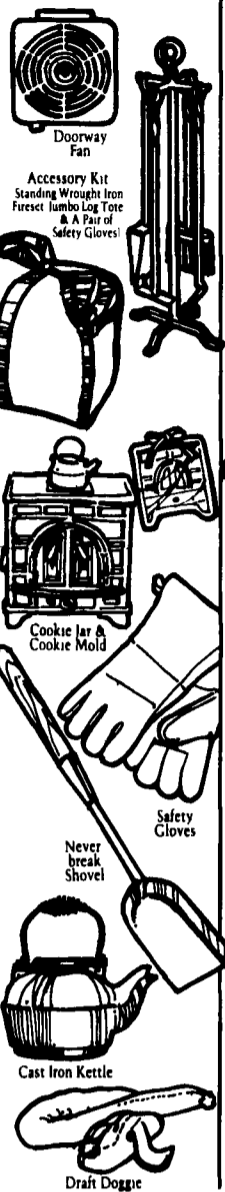
### USED KUBOTA'S IN STOCK

- B6200, 15 Hp, Diesel, 4WD, Hydro, PS, 48" Mower - Like New
- B7100, 16 Hp, Diesel, 4 WD, Gear - Excellent Condition
- B7100, 16 Hp, Diesel, 4 WD, Hydro, With Front Loader - Excellent Condition

Full Line of Kubota Equipment Available At:  
**NICARRY EQUIPMENT CO.**

RD #2, Box 2008, Reading, Pa. 19605      215-926-2441  
Located: 4 Miles North of Reading On Rt. 61 - 3 Miles South of Leesport  
Hours: Mon. thru Fri. 8 to 5; Sat. 8 to 3

Choose from these and other accessories.



# SAVE \$200\*



## For Buying The World's Most Popular Woodstove

\*Get up to a \$100 cash discount and up to \$100 worth of free accessories with the purchase of a new Consolidated Dutchwest Stove. Savings vary by model. Hurry... limited time offer!

**BOWMAN'S STOVE SHOP**  
906 E. Main St., Ephrata, PA 17522  
**(717) 733-4973**  
Tues. & Wed. 10-6; Thurs. & Fri. 10-8; Sat. 10-4  
Int. of Rtes. 322 & 222 - Closed Mondays



**STRIKE  
IT  
RICH!**

SELL  
IT  
WITH  
A

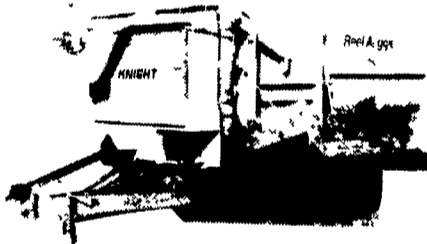
**LANCASTER  
FARMING  
CLASSIFIED**



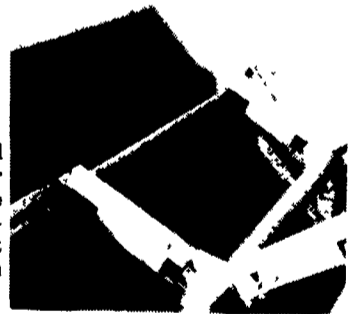
# Reel Auggie

2000 Series

A new concept in TMR Mixers



The Mixer/Blender/Feeder that handles your TMR ingredients including long stem hay. Pictured is the RA2250.



### Reel Auggie Mixing Chamber

The reel turns slowly and gently lifts material into the two blending augers. The lower auger is notched and moves the material forward. The upper auger, which moves the material rearward, features replaceable knives which assist the blending of long baled hay or other tough roughage materials.

### Advantages of the Reel Auggie Design

- \* No more mixing by force and pressure
- \* Blending long hay, other roughages, and by-product materials.
- \* Reduced mixing time with lower horsepower requirements.
- \* Reduced material breakdown, fluffier material consistency faster, more even unloading.
- \* Power chute optional in tow and truck mount applications.

Stationary • Tow • Truck

**You can  
depend  
on a  
Knight**



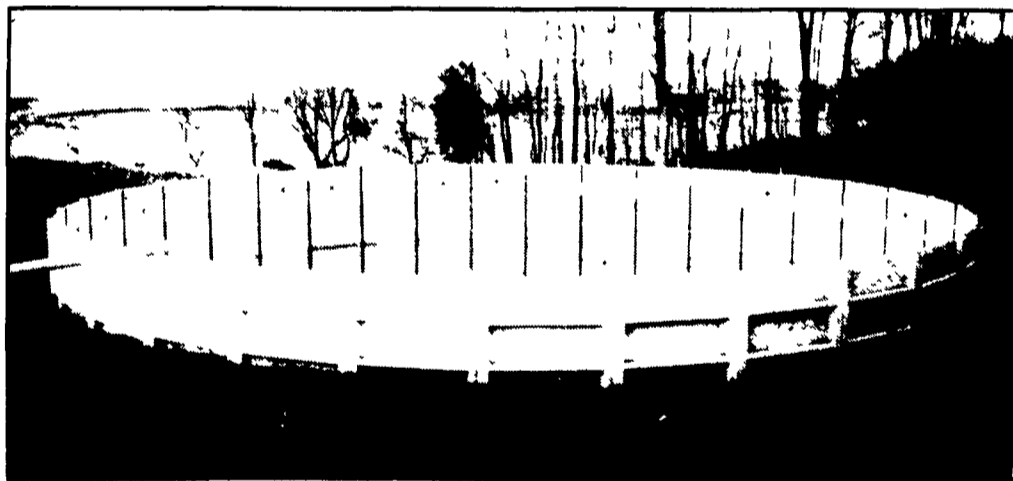
Since 1945

FOURTY YEARS

**TODD FARM  
EQUIPMENT, Inc.**

FARM EQUIPMENT DIVISION  
HAGERSTOWN, MD (301) 791-0422

## PRECAST CONCRETE STORAGE TANKS The Concrete Advantage!



### CONSIDER THESE BENEFITS:

- **DURABLE AND MAINTENANCE FREE** Once erected and in use, you will be assured trouble-free storage.
- **COST EFFECTIVE** Liquid storage and handling costs are minimized.
- **QUALITY CONTROL** Panels are manufactured under controlled factory conditions using up-to-date technology.
- **APPEARANCE** Blends into the local surroundings.
- **FEWER JOINTS** Only 38 in our 500,000 gallon tank — and no bolts.
- **WATERTIGHT CONSTRUCTION** Ensured with our patented joint system and the monolithic closure pour connected base slab.
- **FULL HEIGHT PANELS** 8', 12' or 13' high depending on required capacity and "NO HORIZONTAL JOINTS".
- **EXTENSIVE RANGE** From 27,000 to 500,000 gallon capacity.
- **SITING** Can be surface erected, or can be PARTIALLY or FULLY BURIED depending on the tank size.

See Us At Ag Progress Days  
Aug. 15, 16, 17 — Loc. West 4th St.

★ **STAR SILOS** ★  
**717-866-5708**

630 E. Lincoln Avenue  
Myerstown, PA 17067

After Office Hours Call:  
Bob Brubaker 717-464-3136  
John Swope 717-933-4758