

August 9, 1989

	CATTLE	CALVES	HOGS	SHEEP
WED., 8/9/89 (EST)	125,000	9,000	314,000	23,000
WEEK AGO (EST)	125,000	9,000	307,000	22,000
YEAR AGO (ACT)	127,000	10,000	308,000	20,000
WEEK TO DATE (EST)	365,000	25,000	908,000	63,000
SAME PD LT WK (EST)	369,000	24,000	889,000	60,000
SAME PD LT YR (ACT)	371,000	31,000	894,000	57,000



(Continued from Page A3)

Acres Cattle Update: Live cattle and feeder cattle futures settled mixed today with the fats ending the day from 35 lower to 27 higher on the spot August option, while feeders settled from 3 lower on the March to 33 higher on the August. Front month support was tied to firmer cash fundamentals, notably heavy fed cattle movement yesterday at higher prices. An increase in cut-out values and expectations for further strength provided further support. Some sales were tied to commercial hedging. Feeders were higher on reports of higher prices paid at auction barns for replacement feeders. Some short covering was featured late in the session. **CME FEEDER SETTLEMENT PRICE:** Aug. 7, 1989 - \$84.45 up \$.10 **NEXT DAY OUTLOOK: CASH PRICES** - steady **FUTURES** - steady

Acres Hog Update: Live hog futures settled lower today from \$33/cwt on the spot option to as much as \$1.23/cwt on the April. Session long selling was tied to commission house fund related transactions tied to long liquidation and weaker cash fundamentals. Reports of heavier than anticipated receipts added further pressure along with sharply lower midday product quotes. The lack of deliveries posted against the August kept losses in that option at a minimum coupled with its discount to cash. Bellies were sharply lower as declining pork product prices pressured along with expectations for larger supplies. New contract lows were set in the February through July options.

King's Hay

Kirkwood, Pa.
Tuesday, August 8, 1989
Report Supplied by Auction
TOTAL LOADS: 29.
ALFALFA: 131.00-199.00.
ALFALFA MIX: 125.00-146.00.
GRASS HAY: 71.00.
TIMOTHY AND TIMOTHY MIX
74.00-120.00.
MIXED HAY: 50.00-119.00.
BAR CORN: 85.00-105.00.
STRAW: 80.00-112.00.

N. Wilmington, PA

August 7, 1989

CATTLE 253...PDA... Compared with last Monday's market: Slaughter cows \$1 to \$1.50 higher. Few Choice slaughter steers 70.00-73.00, one Select 67.50, Standard 55.50-63.50. One Choice sl. heifer 68.00, one low yielding 64.75, one Select 61.00, few Standard 54.00-58, few low yielding 46.25. Breaking Utility & Commercial sl. cows 48.00-52.75, few 53.50-54.50, Cutter & Boning Utility 46.80-50.50, few high dressing 52.50, Canner & Low Cutter 38.00-45.75, Shells down to 15.00. Yield Grade No. 1, 1325/2215 lbs. sl. bulls 57.00-61.00, couple 64.50&65.25, one No. 2, 945 lbs. 55.00. Feeder Cattle: Few Medium & Large Frame No. 1, 280/415 lbs. steers 89.00-98.00, 600/930 lbs. 63.00-70.00, Medium & Large Frame No. 1, 400/675 lbs. heifers 64.00-73.00, Large #2, 500/750 lbs. Holsteins 53.00-65.50. Large Frame No. 2, 550/900 lbs. Holstein bulls 52.00-65.00.

CALVES 275... Few Choice vealers 103.00-110.00, Standard & Good 90/120 lbs. 70.00-80.00, 65/85 lbs. 60.00-75.00,

Utility 50/90 lbs. 30.00-42.00. Farm Calves: Hol. Bulls 90/135 lbs. 102:50-121, No. 2, down to 88.00, 80/85 lbs. 70.00-80.00; Hol. Heifers 95/125 lbs. 80.00-125.00. Beef cows 80/125 lbs. bulls & heifers 80.00-144.00.

HOGS 372... Barrows and gilts steady to strong. US No. 1-2 210/225 lbs. 46.00-46.75; 1-3 215/265 lbs. 45.50-46.25, 1-3 160/200 lbs. 36.50-42.50. Sows Boars

30.00-33.00.

FEEDER PIGS 39... Lot US No. 1-3 20 lbs. feeder pigs 9.00, 40/60 lbs. 17.00-31.00 -- all per head.

SHEEP 152... High Choice & Prime 80/100 lbs. spring sl. lambs 66.00-74.00, few 65/75 lbs. 78.00-84.00, Choice 65/95 lbs. 55.00-65.00; Good & Choice 55/85 lbs. feeder lambs 47.00-58.00. Slaughter ewes 6.00-24.00.

Milk May Help Diabetics

ROSEMONT, IL. — Drinking milk may help diabetics manage their blood-sugar levels, according to researcher Mary C. Gannon, Ph.D., at the VA Medical Center in Minneapolis. Since the goal in the treatment of adult-onset (Type 1) diabetes is to prevent high glucose levels, preferably by dietary means, the best foods for diabetics may be those that increase blood insulin without causing a substantial rise in blood glucose. Milk may be such a food. In Gannon's

research, blood insulin was better (i.e., higher) after subjects consumed test "meals" consisting of milk compared with other meals of glucose in water or the milk sugar, lactose, in water. In another experiment, seven different high-protein meals were compared for their effects on blood insulin levels. The high-milk-protein meal (cottage cheese) was among the three most effective protein sources in raising insulin levels.



2020 Horseshoe Rd. Lancaster, PA 17601

Phone 717-397-0035

Fall Alfalfa Hydroseeding Program



Now is the time to plan your late summer planting. Why Fluid Seeding?

- 1) Liquid 3-10-30 makes an excellent choice to start your Alfalfa
- 2) Uniformed application is a must when seeding.
- 3) Many more advantages - Give us a call!

- Reserve Alfalfa from our champion line Edge - Magnum III - Big Ten - Dynasty
- We are the leader in Fluid Hydroseeding

August and September Top Dressing Alfalfa 3-10-30 0-0-40

Princep 90 (Alfalfa Label)

Due to Alfalfa stress, give it a boost with our liquid

Lebanon Valley National Bank's Agricultural Group INVITES YOU TO STOP BY THE PA FFA FOUNDATION BEEF STAND DURING AG PROGRESS DAYS

Have your financial questions answered by Lebanon Valley National Bank's Agricultural Loan Professionals.

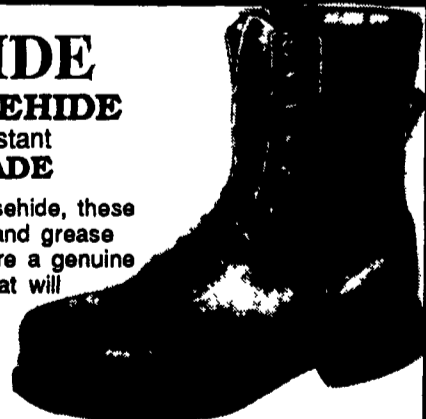
- Mike Firestine - Vice President - Sr. Agricultural Loan Officer
- Bob Donaldson - Agricultural Loan Officer
- Paul Bissman - Agricultural Loan Officer
- Sean McKinney - Agricultural Loan Officer
- Cathy Whittaker - Agricultural Loan Coordinator



Lebanon Valley National Bank 717-274-6906
Member, FDIC Equal Opportunity Lender

HORSEHIDE GENUINE HORSEHIDE
Barnyard Acid Resistant AMERICAN MADE

Made of tough, long wearing horsehide, these shoes stand manure, silage, oil and grease better than cowhide. Shoes feature a genuine Goodyear welt, nitro cork sole that will not track, steel shank, padded collar, cushion insole and arch support. Ideal for barn use. Sizes 7-13 including 1/2 sizes. 1st quality. Our experience shows that horsehide outlasts good cowhide by 50% or more for farm use.



STYLE	WIDTH	PRICE	SIZE	TOTAL
6 Inch	D, EE, EEE	\$52.95		
8 Inch	D, EE, EEE	\$54.95		
8" Steel Toe	EE Only	\$59.95		
8" Insulated,	snow grip sole	\$62.95		

We ship in 24 hours NY Add 7% Tax
We pay shipping Grand Total

W-R SUPPLY CO.
Lake Crane Rd.
Box 388
Earlville, N.Y. 13332
1-800-533-1675

CUSTOMER _____
ADDRESS _____
TOWN _____
STATE _____ ZIP _____

VISA — Phone orders shipped same day — Mastercard