

Oliver 1550 gas tractor, motor completely overhauled. 717-658-7493.

Oliver Single Row Potato Harvester, in good working condition, parts are available, good chains. We will show you how it works. Dump trailer available or can be run in baskets on your trailer. 215-445-6427.

1973 IH Loadstar 1600 w/Swartz 24' roll-back, nice \$8,500
 Timberjack log skidder, as is \$675
 JD 450 C w/ROPS \$13,500
 Case 580B TLB \$6,900
 1978 Chevy Bruin w/wetline \$7,995
 Muvall Implement Trailer w/winch \$7,995
 Case DC Stock Puller, \$2,500
 Ford 8N with tools, orig., \$3,995
 JD 3020 Del., WFE, \$5,995
 JD 5010 self-loading scraper \$7500
 Case 580C, TLB, \$11,750
 JCB TLB \$5,400
 Drott 40 cruz-air \$9,400
 Case 1537 Uni-loader \$850
 1982 Mack Cab/Over w/Sleeper \$10,500
 1984 Chevy 1/2 ton 4 WD, our own \$7,800
 Kelly 50 3 Pt. Backhoe \$2,350
 5,000 Lb. Modified Pull Tractor \$3,500
 Used Tractor Parts

GOODRICH AUCTION SERVICE
 Rt 38 & 38B
 Newark Valley NY
 607-642-3293
 Our Next Auction August 26th

WOODS MOWER 208, new, \$3,150. 301-833-9091

WOODS MOWER HD315, 15' Batwing, new, \$6,000. 301-833-9091

Will buy moldy grain! (301)833-1847.
 WOODS D80, nice, \$1,000. 301-833-9091

WOODS MOWER 121, new, \$3,350. 301-833-9091

Refrigeration units, 2 Kramer 15 ton w/blowers, very good condition. (609)561-0114.

Super M 560-D, WFE tractor, 656-D hydro WFE, excellent condition. 717-258-3967

Terrain King 5' side-mounted rotary mower \$2500. 215/279-2928

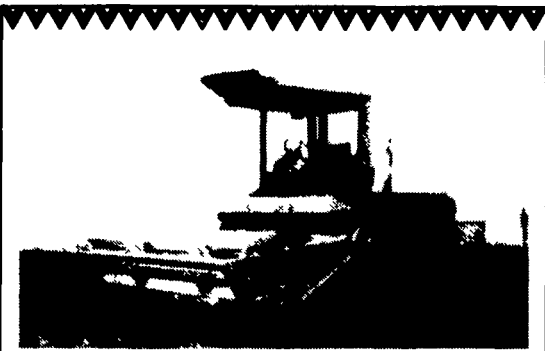
WANTED: 2000 or 3000 Ford Tractor with standard transmission. Also MF Model 81 mower conditioner. 703-547-2366 anytime.

WANTED: Portable or stationary TMR feed mixer. Reasonable price. (717)656-2615.

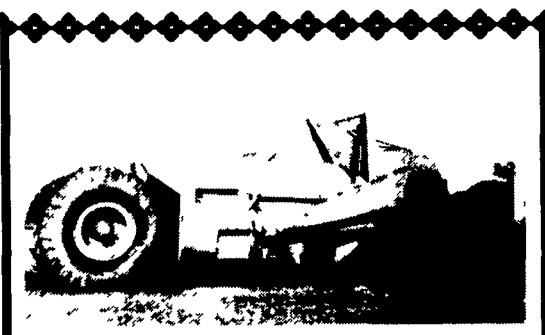
WANTED TO BUY: NH 718 chopper w/824 cornhead. Lancaster Co. (717)656-8531.

We specialize in flat belting, cut to order, baler throwers, self unloading wagons, long table blower belts. Franklin Co. 717-328-3591. If no answer 717-328-5603

WHEEL LOADER IH 510 w/cab. \$12,500. 301-833-9091



1495 Haybine, Diesel
 717-733-0575



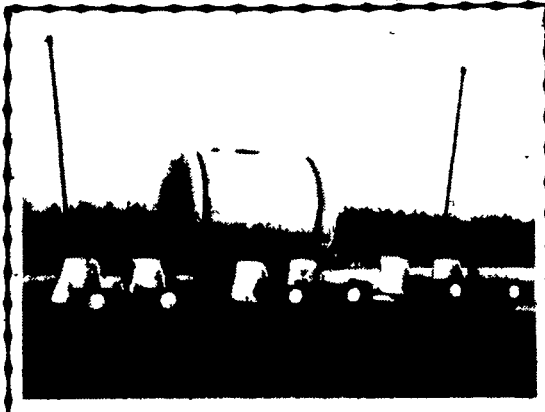
Cat 70 Pan
 All Hydraulic
 \$9,500
 301-928-3000



JD 720
 Runs Excellent, v.g. rubber
 \$2,600
 Belmont Farm
 301-833-9091



NH 900 Harv. Elec. Controls,
 1000 RPM, Nice \$9,500
 717-733-7408



New Mechanical
 Transplanter
 \$3,500
 301-928-3000



6,000 Lb. Cap. 4 WD, All Terrain Forklift,
 Good Detroit Diesel, Needs Lot of Minor
 Work, Government Surplus, \$3,500.
 Baltimore, Md.
 (301) 486-6691

DEPENDABLE MOTOR CO.
 East Main St., Honey Brook, PA.
 215/273-3131 or 215/273-3737

USED EQUIPMENT

- NH 519 Spreader
- NH 822 Corn Head
- NH 276 Baler
- NH 320 Baler
- Peerless Ear Corn Grinder-Blower, Excellent Condition

DEALER FOR
Roskamp



KUBOTA B7100
 4 WD with front and rear blades,
 and 4 ft. belly mower
 \$5,600
 Belmont Farm
 301-833-9091

IH D-358 (108 H.P.) Diesel Engine
 (excellent condition - uses no oil-clean)
 Choice of
 - Complete fan to flywheel \$2,550
 - Power unit with clutch, radiator, switchbox with tach, auto-shutdown \$3,595
 - As above w/o clutch & radiator \$2,850
In Stock For Baler Mounting
 Lombardini 9LD - (30 HP) diesel engines
 Kawasaki KF200 (20 HP) gasoline engines
 NH 311 baler engine mounting kits
 NH 565 baler engine mounting kits
 NH baler rear wagon hitches & bale chutes
 Belts, belt tighteners, shields, etc. for balers
 Steel wheels for balers, rakes & mowers (yellow)
Miscellaneous Supplies
 150 Browning 4Q3V60 Sheave.....\$2.00 each
 50 Browning 6Q3V60 Sheave.....\$2.00 each
 Good double pedestal desk & credenza
FARM-BILT MACHINE
 68 South Weavertown Rd.
 Ronks, Pa. 17572

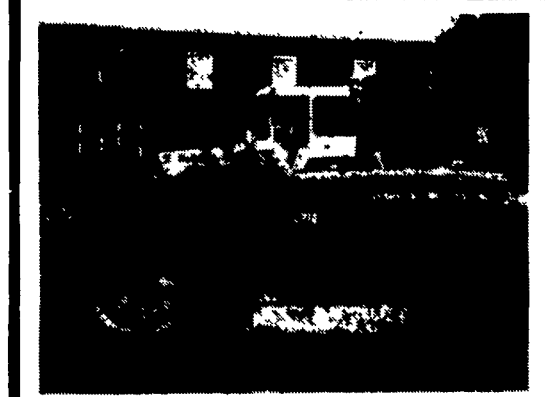
Vegetable seeders by Stanhay, Nibex & Cole. Market Farm Implement. (814)443-1831.

Vermeer new and used round balers. 7' and 9' haybines. Silawrap round bale wrappers, round bale transporters and forks. Electric hay saws. (412)423-4076.

USED TRACTOR PARTS, also rebuilt clutches and torques. We ship UPS. Hill-T Farm Sales - Service, 4295 Richmond Palestine Road, New Madison, Ohio 45346. 513-548-0718.

Used NI 323 corn pickers, good to excellent condition. \$2,600. to \$3,800. 717-768-3197

TRACTORS
 IH 1066 Hydro, Cab, Air, Ex Cond \$13,000
 IH Hvdro 70 very good cond \$8,000
HAY EQUIPMENT
 Vicon KM 321 Disc Mower, Used 1 Season \$10,000
 Vicon Wheel Rake \$1,100
 JD 330 Round Baler, 1 Yr Old \$7,000
 JD 337 Baler \$6,000
 NH 1002 Bale Wagon, 53 Bales, \$3,000
 Woods 20' Batwing Mower, 2 Yrs Old \$6,000
MANURE SPREADERS
 3000 gal Badger \$4,000
 2400 gal. Martin VanGuard, good cond. \$3,500
 NH 791, 2 Beater Endgate \$3,500
CHOPPERS
 JD 3960, 3 RN, 5/2 hay PU, excel. cond. \$11,000
 NH 890 w/Grass Head \$6,000
 (2) JD 716A Tandem, good cond. \$6,000
 JD 714 Tandem, good cond. \$3,500
 301-694-8624



JD 3010 Diesel
 Utility
 \$4,500
 Belmont Farm
 301-833-9091

M&R EQUIPMENT, INC.
 Box 379 Marsteller Rd.
 New Park, PA
 PH 1-717-993-2511
 1-717-246-1972

CASE IH FARM EQUIPMENT IN STOCK - NEW

- 885 Row Crop, FWD, Cab
- 485 2 WD, Hyd. Shuttle
- 900 Planter, 6 RN
- 5100 Drill, 16x7 F
- 96 Rake w/Dolly
- 245 Compact, FWD
- Coming In - 485 2WD with Hyd. Shuttle
- 600 Blower
- 5500 Chisel Plows 7' & 9'
- 370 Disc, 11'6"
- 2250 Loader
- #40 Blade
- #10 Blades

Best Buys in Used Equipment

NEW IDEA

	List	Sale
NI 5209 Disc Mower	\$11,224	\$9,200
NI 484 Round Baler	\$10,558	\$8,600
NI 521 Pull Type 7' Sickle Bar	\$3,445	\$2,850
NI 279 Cuditioner	\$8,055	\$6,500
NI 406 9'6" Rake	\$3,570	\$2,850
NI 415 8'6" Rake	\$3,090	\$2,750
NI 3609 90 Bu. Spreader	\$3,273	\$2,600

BIGGS INCORPORATED
 34 Ruckley Ave.
 Rising Sun, MD
 301-658-5531

WHITE FARM EQUIPMENT
NEW EQUIPMENT
 WHITE-
 60 All American Series Tractor
 80 All American Series Tractor, 4WD
 FB 16, 2WD w/48" Center Mount Mower
 FB 31, 4WD w/Loader
 FB 37, 2WD w/Turf Tires
 FB 37, 4WD w/Loader
 598 5/6 Bot. Plow
 5100 4-Row Planter w/Dry Fert.
 KUHN-
 11' 6 Rake & Tedder
 GEHL-
 HT 243 Tedder
 FB 1540 Blower
 FB 1560 Blower
 FB 1580 Blower
 MC 2170 Mower Cond.
 CB 1060 Forage Harvester
 KEWANEE-
 42 Ft. Hay And Corn Elevator
 BRILLION-
 10 Ft. Grass Soeder Deep-Til Implement
 MDS-148 Pulvimulcher
NEW IDEA FARM EQUIPMENT
 NEW IDEA-
 3618 Spreader
 3622 Spreader
 406 Hydraulic Rake
 5109 Mower Cond.
USED EQUIPMENT
 NI 323 1-Row Cornpicker
 NI 400 Rake
 NI 526 Disk Mower
 NI 224 Spreader
 Gehl 4300 Skid Steer Loader
MILLER EQUIPMENT CO.
 RD 1 Bechtelsville, PA
 215-845-2911