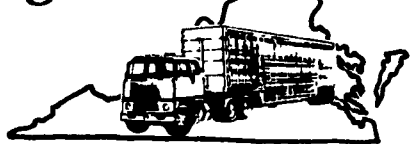


Virginia



Cattle & Hogs

Virginia Weekly

Richmond, Va.
Thursday, August 3, 1989
July 27-August 2, 1989

FEEDER STEERS AND HEIFERS IN VIRGINIA WERE STEADY TO \$6.50 HIGHER AS MIDWEST PRICES WERE STEADY TO \$2.00 LOWER. SLAUGHTER STEERS AND HEIFERS IN VIRGINIA WERE STEADY AS MIDWEST PRICES WERE \$1.00-3.00 LOWER.

COWS AND BULLS IN VIRGINIA WERE STEADY AS MIDWEST PRICES WERE 50 CENT HIGHER. BEEF PRO-

DUCTION WAS 3% BELOW A WEEK AGO AND 7% BELOW A YEAR AGO. AVERAGE DRESSED WEIGHTS WERE 2 POUND LIGHTER THAN LAST YEAR.

VEAL AND CALF PRICES IN VIRGINIA WERE MIXED, \$1.00 LOWER TO \$5.00 HIGHER AS MIDWEST PRICES WERE STEADY. VEAL AND CALF PRODUCTION WAS LESS THAN 1% BELOW A WEEK AGO BUT 11% BELOW A YEAR AGO. AVERAGE DRESSED WEIGHTS WERE 16 POUNDS HEAVIER THAN LAST YEAR.

LAMB PRICES IN VIRGINIA WERE

PRICES WERE STEADY TO \$1.00 LOWER. LAMB PRODUCTION WAS 6% ABOVE A WEEK AGO AND 6% BELOW A YEAR AGO. AVERAGE DRESSED WEIGHTS WERE 1 POUND HEAVIER THAN LAST YEAR.

SLAUGHTER HOG PRICES IN VIRGINIA WERE STEADY TO 50 CENT LOWER AS MIDWEST PRICES WERE \$1.00-1.75 LOWER. FRESH PORK PRICES WERE STEADY TO \$4.00 LOWER EXCEPT HAMS WHICH WERE \$2.00-2.50 HIGHER. PORK PRODUCTION WAS LESS THAN 1% ABOVE A WEEK AGO AND 3% ABOVE A YEAR AGO. AVERAGE DRESSED WEIGHTS WERE THE SAME AS LAST YEAR.

THE VIRGINIA DIRECT HOG MARKET JULY 27-AUG. 2, 1989. RECEIPTS FOR THE DIRECT HOG MARKET IN VIRGINIA ESTIMATED 17,665 HEAD COMPARED TO LAST WEEK 16,998 HEAD. THE MARKET CLOSED STEADY TO 50 CENT LOWER COMPARED TO LAST WEDNESDAY'S TRADING WITH BARROWS AND GILTS; COUNTRY POINTS PLANTS US 1-3 200-240 LBS 44.00-46.00 --- US 1-2 210-240 LBS FEW HIGH YIELDING 45.50-48.00 US 2-4 210-240 LBS BASE PRICE 43.50-46.00

SOWS \$30.00-34.50 AND BOARS \$20.00-28.25.

SLAUGHTER STEERS AND HEIFERS 4%; SLAUGHTER COWS 24%; SLAUGHTER BULLS 3%; SLAUGHTER CALVES AND VEALERS 0%; FEEDER CATTLE UNDER 600 LBS 51% OVER 600 LBS 18%.

PRICE RANGES FOR VIRGINIA WEEKLY AUCTIONS SLAUGHTER CATTLE STEERS; CHOICE 2-3 1000-1150 LBS 63.50-66.75 CHOICE 2-3 1150-1300 LBS 65.50-69.75 CHOICE 2-3 1300 LBS & OVER 67.00-69.75 HEIFERS; CHOICE 2-3 900-1000 LBS 65.00-67.75 CHOICE 2-3 1000-1150 LBS 65.00-65.50 CHOICE 2-3 1150-1250 LBS 65.00-65.75 UTILITY & COMMERCIAL COWS 41.00-52.75 BULLS - 1-2 900-1300 LBS 52.50-64.00 1-2 1300-1600 LBS 52.00-64.00 1-2 1600 LBS & OVER 54.00-68.50 SLAUGHTER CALVES AND VEALERS VEALERS - HIGH CHOICE & PRIME 100-250 LBS 82.00-103.00 GOOD AND CHOICE 100-250 LBS NO QUOTE CALVES - GOOD AND CHOICE 250-500 LBS 76.00-88.00 SLAUGHTER LAMBS HIGH CHOICE & PRIME 95-125 LBS SPRING 55.25-60.00; BUCKS 52.00 SLAUGHTER HOGS US 2-4 200-250 LBS 39.00-46.00 SOWS US 1-3 300-500 LBS 27.00-34.50; 500 LBS & OVER 30.00-34.75.

FEEDER CATTLE STEERS; MEDIUM 1 HEIFERS; MEDIUM 1 200-300 LBS 90.00-110.00 300-400 LBS 80.00-94.00 FEW 75.00 300-400 93.00-106.00 FW 112.00 400-500 76.00-85.00 400-500 86.00-104.00 500-600 75.00-84.00 FW 68.50 500-600 79.00-95.00 600-700 70.00-83.00 FW 68.00 600-700 78.50-87.00 700-800 62.50-74.00 700-800 72.00-80.50 800-900 62.00-69.00 800-900 69.00-78.00.

LBS 53.50.

HEIFERS; SELECT 2-3 850-1100 LBS 57.50.

SLAUGHTER COWS 123 HEAD CUTTER & BNG. UT. 1-3 38.00-46.25 BRK.UT. & COMM. 2-4 42.00-52.00 CANNER & LOW CUTTER 1-2 36.00-44.00.

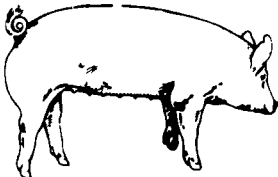
SLAUGHTER BULLS 12 HEAD - 1-2 900-1300 LBS 52.50 1-2 1300-1600 LBS 56.75-58.00 1-2 1600 LBS & OVER 57.00-61.00.

SLAUGHTER CALVES AND VEALERS 9 HEAD VEALERS - HIGH CHOICE AND PRIME 100-250 LBS 91.00 CALVES - GOOD AND CHOICE 250-500 LBS 76.00-88.00.

FEEDER CATTLE 215 HEAD - NO TRENDS REPORTED. STEERS; MEDIUM 1 MED.&LARGE 2 300-400 90.75 --- 400-500 85.00-92.00 --- 500-600 85.00-87.50 2 AT 77.75 --- 600-700 73.25-80.00 71.50 700-800 73.00-77.50 72.00 HOLSTEIN STEERS; MED.&LARGE 1-2 300-500 LBS 68.00-75.00; 1100 LBS & OVER 56.00.

HEIFERS; MEDIUM 1 SMALL 1 MED.&LARGE 2 300-400 76.50-83.50 --- 400-500 78.50-82.50 --- 74.00 500-600 76.25-82.00 73.00-75.00 68.50-74.50 600-700 72.75-75.75 --- 66.50-68.25 700-800 67.50 --- FEEDER BULLS; MED. 1 MED.&LARGE 2 300-500 LBS 85.00-91.00 --- 500-700 LBS --- 67.75-75.00 700-900 LBS 67.75 --- COWS WITH CALVES AT SIDE 15; M-1, 6-10 YR OLD 750-900 LBS WITH CALVES 240-400 LBS 535.00-750.00; L-1, 4-12 YR OLD 750-1100 LBS WITH CALVES 150-250 LBS 405.00-700.00 PER PAIR. BABY CALVES RETURNED TO FARMS 41 HEAD NEWBORN TO 4 WK OLD 40-80.00 PER HEAD. OVER 100 LBS 65.00-107.50 PER CWT.

EMERY'S BUYING STATION



OPEN TO RECEIVE YOUR MARKET HOGS

AT THE GREEN DRAGON MARKET
RD 4, EPHRATA, PA 17522
1 MILE N. OF EPHRATA
ON STATE STREET.

HL MONDAY, TUESDAY, and
WED. WEDNESDAY 7:00 A.M. to 11:30 A.M.

215-458-5677 Residence
717-733-9648 Office

YOU ARE PAID FOR YOUR HOGS IMMEDIATELY

Ken & Lois Emery, Proprietors

Agricultural Software

We sell and support Doane(tm) and Harvest(tm) software for:

- * Accounting
- * Crop management
- * Dairy management
- * Equipment management
- * Poultry management
- * Swine management and more.

Heritage Computer Solutions

Annville, PA

Call 717-838-1685 or
717-397-1998

Northern Virginia Area Livestock

Summary

Orange, Va.

Wednesday, August 2, 1989

ALL TRENDS COMPARED TO LAST WEDNESDAY SLAUGHTER CATTLE 165 HEAD - NO TRENDS REPORTED.

SLAUGHTER STEERS AND HEIFERS 21 HEAD STEERS; CHOICE 2-3 1000-1150 LBS 66.75 SELECT 2-3 1100 LBS & OVER 55.00
HOLSTEIN; SELECT 1-2 1100-1500

Peoria Sheep

Peoria, Illinois

Tuesday, August 1, 1989

FEDERAL-STATE OPENING, MID-SESSION AND CLOSE SHEEP: 300. TRADING MODERATE. COMPARED WITH LAST TUESDAY SLAUGHTER LAMBS MOSTLY 3.00 HIGHER. SLAUGHTER EWES STEADY.

SLAUGHTER LAMBS: CHOICE AND PRIME 110-125 LBS. 57.00-60.00, 90-110 LBS. 55.00-57.00.

SLAUGHTER EWES: CULL AND UTILITY 13.00-16.00.

PROFIT MAKERS = OUTLAW BOARS

- I. **Hampshires** - selected for Lean Muscle, the key ingredient in the efficient production of lean high quality pork.
 - II. **Landrace** - pig factories - selected for durability, pig numbers, milk production, high productivity.
 - III. **Large Whites** - highly productive super mothers, litters up to 19 born alive & 16 weaned.
- Free selection and delivery. All animals guaranteed.



Call Collect For More Information

OUTLAW SEEDSTOCK SERVICES

Ben Outlaw Route 2, Box 324A • Seven Springs, NC 28578 • 919-569-7521

SWINE PRODUCTION SALES AND SERVICE

Feeding Programs And Services To Meet Your Individual Needs

Computerized Record Keeping System

Contracts Available



Supplying Farm Fresh Feeder Pigs

Marketing and Hedging Services

Marketing of Genesis Breeding Stock

Developing Individual Financial Programs

Quality Products And Services - Working For YOU

419 West High Street
Elizabethtown, PA 17022

Elizabethtown
(717) 367-1525

PA Toll Free
1-800-468-5524

Shippensburg
(717) 532-7845

Diesel Fuel PROBLEMS?



FUEL POWER

The Additive For All Reasons And Seasons!

FPPF Fuel Power is a year 'round fuel additive that:

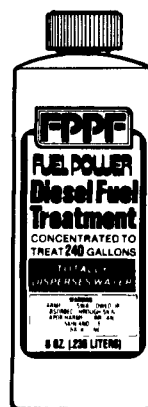
- totally disperses the fuel
- prevents the growth of algae
- decarbonizes the entire fuel injection system
- provides GREATER POWER and more miles per gallon

For further information, write/call:

MILLER DIESEL INC.

DIESEL FUEL INJECTION & TURBO CHARGER SPECIALIST
TUNE UPS AVAIL. BY APPT.

6030 Jonestown Rd., Harrisburg, PA 17112
717-545-5931 Interstate 81 Exit 26



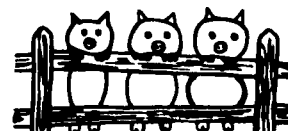
#1 YEAR ROUND BEST SELLER

SOYBEAN ROASTING ON YOUR FARM

Don't Waste It - Roast It!

This Little Piggy Went To Market,
This Little Piggy Stayed Home,
This Little Piggy Had...

ROASTED SOYBEANS



Make Higher Profits From All Grains.
Roasting Improves TDN, Destroys Mold,
Retards Toxins & Removes Moisture.

CUSTOM GRAIN ROASTING
DONE IN PA. & SURROUNDING STATES

DALE L. SCHNUPP

RD 6, Lebanon, Pa. 17042
PH: 717-865-6611



ALLEN SUMMERS
703 E. Christine Rd
Nottingham, Pa. 19362
215-932-4761

DAVID N. GROFF
RD 1 Box 506C
Lewisburg, Pa 17837
717-966-3593