



**Produce Markets**

**Philadelphia Vegetables**  
July 26, 1989

PARTLY CLOUDY 73-91.  
ARTICHOKE SUPPLIES INSUFFICIENT TO QUOTE.  
ASPARAGUS HIGHER MEXICO 12-lb crt bchd 12s exlge 25.00 lge 25.00 one label 28.00 sml 24.00 loose jbo 25.00.  
BEANS ABOUT STEADY various bu containers Round Green type unless otherwise stated NJ 10.00- 11.00 mos 11.00 fair qual 8.00-9.00 mos 8.00 fair cond 5.00-6.00 PA fair qual 7.00-8.00 fair cond 5.00 1-1/9 buctn fair qual 9.00-10.00.  
BEANS-LIMA MD buhmpr fair qual 18.00 VA buhmpr fair qual 18.00.  
BEETS SUPPLIES LIGHT OH crt bchd 12s 6.50-7.00 one lot 4.00-5.00 NJ crt bchd 12s 6.00.  
BROCCOLI ABOUT STEADY CA ctn bchd 14s 11.00-12.00 mos 12.00 few 12.50 18s 12.00 Loose Crowns 13.00.  
BRUSSEL SPROUTS NO SUPPLIES.

CABBAGE SLIGHTLY LOWER 1-3/4 buctn & crt med green unless otherwise stated NJ 6.00-7.00 some 5.00 fair cond 4.50 Red 7.00-8.00 PA incl lge 5.00-7.00 NY 7.00 Red 7.00- 8.00 MI fair cond 4.00.  
CARROTS ABOUT STEADY 48-1 lb film bags in film sacks CA 16.50-17.00 one lot 14.00 50-lb sacks loose jumbo CA 11.50-13.00 mos 12.00 few 14.00 fair cond 9.00-10.00 ctn bchd 24s CA 10.50 miniature type OH ctn 20-12 oz film bags 8.00.  
CAULIFLOWER HIGHER CA ctn film overwrpd 12s 15.00-16.00 few 16.50.  
CELERY SLIGHTLY LOWER CA ctns 1-1/2 doz 15.00 2 doz 15.00-17.00 mos 16.00 few 19.00 2-1/2 doz 16.00-17.00 few 20.00 MI ctn 2 doz 14.00 few 12.00-13.00 2-1/2 doz 14.00- 16.00 few 12.00-13.00 3 doz 15.00-16.00 few 12.00-13.00 NY 2 doz 12.00- 13.00 3-4 doz 9.00-10.00 OH 3 doz 9.00 4 doz 9.00-10.00.  
CHINESE CABBAGE OH 1-1/9 buctn incl Nappa 9.00-10.00 CA 50-lb ctn Nappa 16.00-17.00 mos 17.00 Bok Choy 15.00.  
CORN wirebound crt approximately

4-4-1/2 doz unless otherwise stated PA White 14.00-15.00 NC Yellow 10.00 NY Yellow 10.00-12.00 White 12.00-14.00 mos 13.00 few 15.00 fair qual loas 11.00 Bi-color fair qual 8.00.  
CUCUMBERS LOWER 1-1/9 buctns & crts waxed medium unless otherwise stated NJ 9.00-11.00 few 12.00 fair qual 6.50 lge 5.00 sml 7.00-8.00 few 10.00 Pickles sml 16.00-17.00 med-lge 10.00 fair cond 4.00-5.00 lge 6.00-8.00 NY 10.00 fair qual 5.00-6.00 MI 8.00-10.00 fair qual 4.00-5.00 lge 5.00 PA 10.00-11.00 fair qual 7.00- 8.00 lge 4.00-6.00 sml 8.00-9.00.  
EGGPLANT ABOUT STEADY GA 1-1/9 buctn fair qual 8.00 NC 1-1/9 buctn wrpd med 10.00-12.00 fair qual 6.00-8.00 mos 8.00 lge 8.00-10.00 NJ 1-1/9 buctn fair qual few 5.00.  
ENDIVE SLIGHTLY LOWER OH 1-1/9 buctn 7-7.50 mos 7.00 CA ctn 24s 10.00-10.50.  
ESCAROLE LOWER OH 1-1/9 buctn 7.00-8.00 CA ctn 24s 11.00-11.50.  
GARLIC per lb CA 30-lb ctn White Colossal 1.10 super jbo 1.10 jbo .85 MEXICO 30-lb ctn White Colossal 1.10 super jbo 1.00 jbo .80 packages 12-2s 1.75.  
GREENS ABOUT STEADY crt approximately 1-1/2 bu bchd unless otherwise stated NJ Collards, Mustard, Turnip Tops & Rape 7.00 Kale 7-7.50 PA Kale 6.50 CA Red Kale 15.00.  
LEEKS NJ crt bchd 12s 10.00-12.00 GUATEMALA ctn bchd 12s 12.00-15.00.  
LETTUCE ICEBERG SLIGHTLY HIGHER ctn 24s unless otherwise stated CA 17.00-18.00 fair qual 13.00-15.00 fair cond 10.00-12.00 ord cond loas 5.00 film wrpd 15.00 30s 14.00 WA fair cond 8.00-9.00 MI ctn 18s 6.00 ROMAINE SLIGHTLY HIGHER CA ctn 24s

11.00-12.00 crt 15.00 few 15.50 OH crt 24s 7.00-8.00 mos 8.00 few lower BIG BOSTON CA ctn 24s 7.50-8.00 fair cond 5.00 BIBB OH 12-qt bkt 24s 5.00 LEAF CA ctn 24s 10.00-11.50 mos 11.00 few 9.50 Red 10.00-12.00 mos 10.00 few 9.50 OH crt 24s incl Red 7.00.  
MUSHROOMS ABOUT STEADY PA 4-qt bkt med-lge 5-5.50 sml-med 4-4.50 10-lb ctn med 9-9.50 lge 10.50 exlge 11.50-11.75 packages 10-12 oz 9-9.50 mos 9.00 3-lb ctn Shiitake 18.00 fair qual 12.00-13.00 mos 12.00.  
OKRA SUPPLIES LIGHT GA buhmpr med fair cond few 18.00 med-lge fair qual & cond 15.00.  
ONIONS-GREEN ABOUT STEADY ctn bchd 48s NJ 9.00-10.00 MEXICO 8.00.  
PARSLEY ABOUT STEADY bchd 5 doz Curly unless otherwise stated OH crt 15.00 ctn 10.00 CA ctn 13.00.  
PEAS-GREEN CA buctn few 25.00.  
PEAS-SOUTHERN SUPPLIES INSUFFICIENT TO QUOTE.  
PEAS-SUGAR 10-lb ctn per lb CA incl via air 1.20-1.35 mos 1.20 GUATEMALA incl fair appear 1.40-1.50 mos 1.40 Sugar Snap 2.20.  
PEPPERS LOWER 1-1/9 buctns & ctns Calif Wonder type unless otherwise stated NJ lge 12.00-14.00 fair cond 10.00-11.00 med 10.00-12.00 sml 8.00 NC lge 10.00-12.00 med 8.00-10.00 Red lge fair cond 22.00 PA lge-exlge 12.00-15.00 lge 12.00 med 10.00 GA lge fair qual & cond 9.00-10.00 med 8.00.  
RADISHES ABOUT STEADY OH ctn Red 30-6 oz film bags 2.50-3.75 mos 3.00 few 4.00 14-1 lb film bags 2.50-3.75 mos 3.00 bchd 24s 6.00-8.00 White 24-8 oz film bags 6.00.  
RUTABAGAS CANADA 50-lb ctn CD#1 waxed 18.00.  
SPINACH PA 1-1/4 buctn Savoy type 12.00 NJ bukt Savoy type 12.00 OH 1-1/4 buctn Savoy type 10.00-12.00 CA flat type ctn bchd 24s 11.00-12.00.  
SQUASH SLIGHTLY HIGHER NJ 1/2 buct & ctn Zucchini sml-med 7.00-8.00 few 10.00 occ 12.00 med 5.00 Yellow Straightneck sml-med 5.00-7.00 mos 5.00-6.00 med 4.00-5.00 mos 4.00 PA 1/2 buctn Yellow Straightneck sml-med very few 5.00.  
SWEET POTATOES SUPPLIES INSUFFICIENT TO QUOTE.  
TOMATOES LOWER 25-lb ctn Pink to Light Red US Comb or better unless otherwise stated VA 5x6s 10.50-11.00 few 9.50 Red 9.00 6x6s 7.50-8.50 6x7s 7-7.50 mos 7.00 fair qual 5x6s fair cond 7.00 6x6s fair cond 6.00 NJ incl green-turning Wide range in qual & cond lge 8.00-12.00 mos 8.00-10.00 one lot few best 15.00 ord qual 4.00 med 4.00-8.00 mos 6.00-7.00 ord qual & cond 3-3.50 sml fair cond 3.00-4.00 CA 5x6s 10.50 6x6s 8.50 6x7s 7.50 fair qual 5x6s 9.00-10.00 FL vine ripe 5x6s 11.00-12.00 NC fair qual 5x6s 9.00-10.00 6x6s 8.00 REPACKED LOCALLY CA & VA 5x6s 13.00 6x6s 12.00 6x7s 11.00 PLUM TYPE VA Red 6.00-7.00 GA fair cond 6.00-7.00 CHERY TYPE flats 12-1 pt trays CA Red 6.00-7.00.  
TURNIPS SUPPLIES INSUFFICIENT TO QUOTE.  
VEGETABLES-OTHER ITALY 1-lyr flat Radicchio 12s 10.00-12.00.  
WATERCRESS WV ctn bchd 24s 8.50-9.00.

**Leola Produce Auction**

Leola, PA  
July 25, 1989

Report Supplied by Auction  
APPLES, LODI: 8.00-10.00 BU.  
BLUEBERRIES: 8.50-12.00 12 PT. FLAT.  
BEANS, GREEN: 11.00-16.00 1 1/9 BU.  
BEANS, YELLOW WAX: 11.00-16.00 1 1/9 BU.  
BEANS, LIMA: 16.00-25.50 1 1/9 BU.  
BROCCOLI: 2.50-6.00 12-14 CT.  
CAULIFLOWER: .45-.70 HD.  
CABBAGE: .27-.33 HD.; 3.00-6 50 CRATE.  
CUCUMBERS: 6.50-12.00 1 1/9 BU.  
EGGPLANT: 4.50-9.00 BU.  
CANTALOPES: .80-1.60 EA.  
PLUMS: 8.00-14.00 1/4 BU.  
PICKLES: 3.50-9.50 1/4 BU.  
POTATOES: WHITE 5.75-12.00 50 LBS; RED 6.50-12.00 50 LBS.  
PEPPERS: 9.00-14.00 1 1/9 BU.  
PEACHES: 9.00-12.00 1/4 BU.  
RED BEETS: 4.50-6.50 15 CT. BUNCH.  
RASPEBERRIES, RED: 16.00-20.00 12 PT. FLAT.  
CORN, SWEET: WHITE .85-2.25 DOZ.  
SQUASH: YELLOW STRAIGHT-NECK 2.00-5.00 1/4 BU.  
TOMATOES: CHERRY: 8.00-10.50 12 PTS.; 15.00-25.00 25 LBS. #1.  
WATERMELONS: SEEDLESS 2.00-2.35 EACH; YELLOW DOLLS .60-1.10 EACH.  
ZUCCHINI: 4.00-10.00 1/4 BU.  
SALE DAYS ARE MON.-FRI., 9:30 A.M. AND SAT. 9 A.M.

**Philly Potato & Onion**

July 27, 1989

HAZY 74-94.  
ONIONS-DRY ABOUT STEADY 50-lb sacks US#1 or generally good quality and condition Yellow new crop unless otherwise stated CA Grano type jumbo 13.00 few 14.00 fair cond 11.00-12.00 TX Grano type jumbo 12.50-14.00 mos 13.00-14.00 repacker size 11.00 White jumbo 20.00 medium-large 17.00 NM Grano type jumbo 13.00-14.00 White jumbo 20.00.  
POTATOES ROUND WHITES SLIGHTLY LOWER, OTHERS ABOUT STEADY 50-lb sacks US#1 size A washed or brushed unless otherwise stated Round Whites DE 850- 925 mos 900 some 800 lge 14.50 10-lb paper sacks 235 baled 10-5 lb paper sacks 12.00 VA 8-850 fair condition 700 lge 12.00-13.00 NJ one label 10.00 NC 850-900 fair condition 500 CANADA CD#1 Prince Edward Isle fair condition 500-600 Round Reds AL 50-lb carton 15.00 size B 23.00 WI 14.00 size B 20.00 CA 50-lb carton 15.00-16.00 size B 20.00-22.00 Long Whites CA 50-lb carton 15.00-16.00 Russets 50-lb carton count unless otherwise stated ID Old Crop 70s 18.00 80s 18.00 few 17.50 90s 16.00-16.50 100s 15.00-15.50 baled 10-5 lb film bags non size A 14.50 few higher CA Norkotah 70-80s 12.00-14.00 90s 13.50-14.00 few 14.50 100s 12.50-13.00 10 oz min US#2 10.00.

**FEED INGREDIENTS**

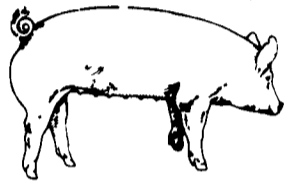
**We Want To Help You Reduce Your Feed Costs**

- 48% SOYBEAN MEAL
- ROASTED SOYBEANS
- DRIED CORN DISTILLERS
- MIXES

Call Us Today...

**HERSHEY AG**

(717) 653-8783 R.D. #1, Box 139  
1-800-544-4574 Marietta, PA 17547



**EMERY'S BUYING STATION**

**OPEN TO RECEIVE YOUR MARKET HOGS**

**AT THE GREEN DRAGON MARKET  
RD 4, EPHRATA, PA 17522  
1 MILE NORTH OF EPHRATA  
ON NORTH STATE STREET.**

**HOURS: MONDAY, TUESDAY, and  
WEDNESDAY 7:00 A.M. to 11:30 A.M.**

215-458-5677 Residence  
717-733-9648 Office

**YOU ARE PAID FOR YOUR HOGS IMMEDIATELY**

Ken & Lois Emery, Proprietors

C.B. HOOBER & SON, INC.  
Intercourse, PA  
(717) 768-8231

**HOOBER**

HOOBER EQUIPMENT, INC.  
Middletown, DE  
(302) 378-9555

**TWO LOCATIONS**  
*The Saving Place*

**WE SHIP PARTS DAILY**

Via UPS - PPSH - BUS - AIR FREIGHT, ETC.

**Ghibli**

**PRESSURE WASHERS**

• Small Gas Engine & 2 Wheel Cart

**JULY SPECIAL**

**45% DISCOUNT!**

(Supply Limited)



COLD WATER

**HOURS**

Mon.-Fri. 7 AM-5 PM; Sat. 7 AM-Noon

**CALL US...**

*It Could Be We Have It*

**Case**

Authorized UPS Station



**YOU STAY PUT**

Pick Up Your Phone And Place Your Parts Order With Us



**The Lancaster County Red Rose**

FFA thanks the

following buyers for supporting our 27th Annual FFA Hog Show & Sale.

- Walter M. Dunlap & Sons
- Hatfield Packing
- Hess's Catering
- Ezra Good
- Gehman's Feed Mill
- Gwaltney Packing
- Willie The Butcher
- Frank Feeser

