

Greencastle Livestock

Greencastle, Pa.

Monday, July 17, 1989

SLAUGHTER CATTLE RECEIPTS: 618 HD. SLAUGHTER STEERS: 110 HD. TREND: STEADY TO 1.00 HIGHER. HIGH CHOICE & PRIME 2-4 CHOICE 2-3 950-1075 LBS. 71.00-74.25, 1075-1375 LBS. 72.50-76.00; CHOICE 2-3, OVER 1375 LBS. 70.00-74.50, CHOICE 4 ALL WEIGHTS 67.00-70.50, SELECT & CHOICE 1-2 950-1100 LBS. 69.00-72.50, 1100-1375 LBS. 67.00-70.50, OVER 1375 LBS. 65.00-69.50. HOLSTEINS CHOICE 2-3 1050-1450 LBS. 62.00-66.50, SELECT 1-2 1050-1450 LBS. 57.00-61.75.

SLAUGHTER HEIFERS: 89 HD. TREND: STEADY TO 1.00 HIGHER. CHOICE 2-3 850-1000 LBS. 65.00-69.00, 1000-1250 LBS. 68.50-74.00; CHOICE 4 ALL WEIGHTS 62.00-66.50; SELECT & CHOICE 1-2 850-1000 LBS. 64.50-70.00, 1000-1250 LBS. 66.00-70.50.

HOLSTEINS: CHOICE 2-3, 1000-1350 LBS. 57.00-67.50; SELECT & CHOICE 1-2, 1000-1350 LBS. 52.50-57.00.

SLAUGHTER BULLS: 14 HD. TREND: STEADY & STRONG. YIELD GRADE 1 ALL WEIGHTS 61.00-66.50; YIELD GRADE 2 ALL WEIGHTS 55.00-60.75.

BULLOCKS: 2 HD. CHOICE 1-3 950-1150 LBS. 63.00-66.00; CHOICE 1-3 1150-1375 LBS. NONE; SELECT 1-2 950-1250 LBS. NONE.

COWS: 293 HD. TREND: 1-2.00 DOWN. BREAKING UTILITY & COMMERCIAL 47.00-51.50; CUTTER & BONING UTILITY 46.00-52.00; CANNER & LOW CUTTER 46.50 & DOWN.

STOCKER & FEEDER CATTLE RECEIPTS: 69 HD. TREND: STRONG DEMAND.

BEEF TYPES: 200-400 LBS. STEERS 90.00-102.00, BULLS 85.00-101.00, HEIFERS 75.00-86.00; 400-600 LBS.

STEERS 78.00-88.00, BULLS 67.00-80.00, HEIFERS 70.00-80.00; 600-800 LBS. 70.00-79, BULLS 60.00-67.00, HEIFERS 59.00-68.00; 800-975 LBS. STEERS 65.00-70.00, BULLS 55.00-60.00, HEIFERS 58.00-60.00.

HOLSTEIN & DAIRY CROSS: 200-400 LBS. STEERS 80.00-90.00, BULLS 75.00-86.00, HEIFERS 80.00-99.00; 400-600 LBS. STEERS 64.50-74.00, BULLS 59.00-64.00, HEIFERS 65.00-71.00; 600-800 LBS. STEERS 59.00-64.00, BULLS 52.00-59.00, HEIFERS 57.00-64.00; 800-975 LBS. STEERS 55.00-59.25, BULLS 51.00-57.00, HEIFERS 52.00-57.00.

CALVES: 793 HD. VEAL CALVES: TREND: STEADY. CHOICE 150-300 LBS. 87.00-104.00; GOOD 150-300 LBS. 78.00-88.00, 100-150 LBS. 75.00-85.00, 80-100 LBS. 73.00-80.00, STANDARD 80-100 LBS. 69.00-73.00, 80 LBS. & DOWN 69.00 & DOWN.

CALVES RETURNING TO THE FARM: TREND: STEADY. HOLSTEIN BULLS OVER 100 LBS. UP TO 124.00, BULK 100.00-119.00; UNDER 100 LBS. UP TO 118.00, BULK 87.00-105.00. HOLSTEIN HEIFERS OVER 100 LBS. UP TO 130.00, BULK 100.00-120.00; UNDER 100 LBS. UP TO 110.00, BULK 80.00-90.00. BEEF TYPE BULLS OVER 90 LBS. UP TO 130.00. BEEF TYPE HEIFERS OVER 90 LBS. UP TO 120.00.

SHEEP & LAMBS: 62 HD. LAMBS: TREND STEADY TO WEAK. CHOICE 80-100 LBS. 61.50-64.00; MEDIUM & GOOD ALL WEIGHTS 55.00-61.00. LIGHT LAMBS UP TO 75.00.

SHEEP: EWES, LEAN 22.00-28.00; EWES, FAT 15.00-21.00; YEARLINGS, 30.00-45.00; BUCKS, 16.00-22.00.

GOATS: 12 HD. SMALL 20.00-26.00; MEDIUM 27.00-42.00; LARGE 43.00-82.00.

HOGS, SOWS & BOARS: BARROWS & GILTS. TREND: STEADY TO .50 LOWER. 210-250 LBS. 45.10-48.00, 250-260 LBS. 46.00-46.75, 260-270 LBS. 43.00-45.50, 270-300 LBS. 40.00-43.00. LIGHT HOGS: 140-180 LBS. 33.50-39.00, 180-210 LBS. 39.00-43.75.

SOWS: TREND: 1.00 HIGHER. GOOD SOWS, UNDER 400 LBS. 34.00-37.50; GOOD SOWS, OVER 400 LBS. 33.50-37.00; CULL SOWS, ALL WEIGHTS 30.00 & DOWN.

BOARS: TREND STEADY. 180-210 LBS. 30.00-32.00, 210-260 LBS. 32.00-35.00, 260-300 LBS. 29.00-31.00, 300 LBS. & OVER 28.00-30.50.

FEEDER PIGS: (BY THE HEAD) 20-30 LBS. 15.00-19.00; 30-40 LBS. 18.00-22.00; 40-50 LBS. 20.00-25.50; 60 LBS. & OVER BY THE LB. 35.00-42.00.

SALE EVERY MONDAY AT 2:00 P.M. & EVERY THURSDAY AT 1:00 P.M.

HAY & STRAW SALE EVERY MONDAY & THURSDAY AT 11:30 A.M.

SPECIAL FEEDER CATTLE SALE: FRIDAY, AUG. 4 AT 7:15 P.M.

SPECIAL FEEDER PIG SALE: SATURDAY, JULY 22 AT 1:00 P.M.

Oklahoma City Feed Cattle Weekly

July 19, 1989

COMPARED WITH LAST WEEK'S CLOSE-FEEDER STEERS AND HEIFERS STEADY TO \$1.00 HIGHER. FEEDER DEMAND GOOD. TRADE ACTIVE. SLAUGHTER COWS \$2.00 LOWER. COW DEMAND MODERATE. NEAR 40% OF COW NUMBERS PURCHASED BY COUNTRY ACCOUNTS. SLAUGHTER BULLS \$2.50-\$3.50 LOWER. BULL DEMAND LIGHT. VERY SHARP DECLINES ON DRESSED COW AND BULL TOOK A TOLL ON LIVE PRICES. RECEIPTS THIS WEEK 10,700; LAST WEEK 9,383; LAST YEAR 14,715. RUN INCLUDED 70% YEARLING FEEDER STEERS AND HEIFERS, STEER AND HEIFER CALVES 24%; COWS AND BULLS 6%.

FEEDER STEERS: MEDIUM AND LARGE FRAME 1, 300-400 LB. \$112.50-\$116.25; 400-500 LB. \$100.00-\$110.00; 500-550 LB. \$96.50-\$101.00; 550-600 LB. \$89.00-\$97.00; 600-650 LB. \$86.50-\$94.00, MOSTLY \$88.50-\$92.50; 650-700 LB. \$86.50-\$89.00; 700-750 LB. \$84.50-\$88.50; 750-800 LB. \$83.50-\$86.50; 800-900 LB. \$80.00-\$84.25; 900-975 LB. \$78.00-\$79.75. LARGE FRAME 2 HOLSTEINS, 335 LB. THIN \$104.00; 480 LB. THIN \$86.00; 560 LB. \$78.25; 875-925 LB. \$66.75-\$70.00.

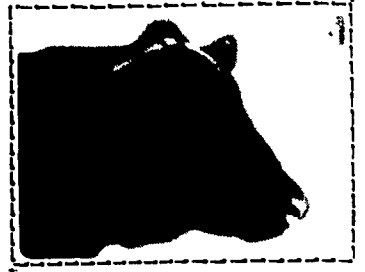
FEEDER HEIFERS: MEDIUM AND LARGE FRAME 1, 300-400 LB. FEW \$95.25-\$101.00; 400-500 LB. \$84.50-\$92.00; 500-600 LB. \$82.00-\$88.00; 600-700 LB. \$80.00-

\$86.00, MOSTLY \$80.50-\$84.25; 700-800 LB. \$79.00-\$81.50; 800-825 LB. FEW \$78.00-\$78.50.

SLAUGHTER COWS: BREAKING UTILITY AND COMMERCIAL Y.G. 3-4 \$47.50- \$50.00, HIGH DRESSING \$50.00-\$52.25. CUTTER AND BONING UTILITY Y.G. 1-2 \$48.00-\$51.50, HIGH DRESSING \$51.00-\$53.75. CANNER AND LOW DRESSING CUTTER \$43.50-\$47.50.

SLAUGHTER BULLS: Y.G. 1, 1250-2250 LB. AVERAGE DRESSING \$59.00- \$63.50, HIGH DRESSING \$63.50-\$65.00, HIGH BONING \$64.75-\$67.75; LOW DRESSING OR FLESHY \$54.00-\$64.25.

REPLACEMENT COWS: PRE TESTED FOR BANGS, PREGNANCY, AND AGE MEDIUM FRAME NO. 1 MUSCLED COWS: 2-6 YEAR OLD 700-975 LB. OPEN TO 6 MONTHS BRED \$59.50-\$70.00/CWT. 5-10 YEAR OLD 850-1150 LB. 2 TO 8 MONTHS BRED \$49.75-\$59.50/CWT. COUPLE LOTS 7-8 YEAR OLD 900-1050 LB. BRAHMA CROSS BRINDLES 2 TO 5 MONTHS BRED \$70.00-\$74.50/CWT.



The Big Parade Of Ford New Holland Tractors And Equipment Is Here At C.E. WILEY & SON INC.

CAN YOU TOP THIS...
0% Financing For 18 Months On New Hay And Forage Equipment -

0% Financing For 24 Months On 20-Series Compact Diesels (12.5 - 26 HP)

...YES! We Have Larger Tractors - They Also Carry Low Rates!

If You Can't Afford New - Check This List Of Good Used Equipment:

- NH 256 Rake
- NH 28 Blower
- NH 310 Baler w/Engine
- Bobcat 610 Skid Loader
- JD 110 Disk Harrow, 12'9"
- Ford 4600 Tractor With Loader
- NH 1495 SP Haybine, Diesel, Cab & Air, Hydrostatic
- NH 679 Manure Spreader w/Endgate & Upper Beater



C.E. WILEY & SON INC. PARADE OF VALUES

Your Southern Lancaster County Ford New Holland Dealer

C.E. WILEY & SON INC.

101 S. LIME QUARRYVILLE, PA. PHONE (717) 786-2895

FOR YOUR CONVENIENCE, 1-800-346-0119

Our 82nd Year Serving The Community

ATTENTION FARMERS

The New Way To Market Your Livestock

HATFIELD PACKING CO. AND MOYER PACKING CO.
Will Receive Hogs Will Receive Cattle

At The

BLAIR-BEDFORD BUYING STATION
RD 1 Martinsburg, Pa

MONDAYS - Hogs 7:30 AM to 12 Noon
Cattle & Calves 7:30 AM to 4 PM

THURSDAYS - Cattle & Calves
7:30 AM to 4 PM

- No commission or yardage fees deducted from check
- Livestock weighed and paid for immediately
- You may call our office sale day for prices

DALE R. HOOVER - Owner

Business 814-793-3077
Residence 814-793-2657

LAWN FURNITURE



RIDGEVIEW WOODCRAFT

R.D. #1 Blain, PA. Phone (717) 536-3687

- Pressure Treated Lawn Furniture
- Where Quality Comes First
- Bridges, Picnic Tables, Gliders, Porch Swings, Rose Arbors, Cupolas, Weather Vanes, Dog Boxes, Etc.

Dealers Welcome
OPEN SIX DAYS A WEEK
(Closed Sun.)
(Clip N Save)

CUPOLAS
Manufactured & Custom Built For:
Gazebos - Red Barn Sheds - Garages - Horse Barns

Ventilate and Decorate

