

Dairy and Livestock Sales

Public Auction Register

Closing Date Monday 5:00 P.M.
of each week's publication

FRI SEPT 15 - 9AM
Equipment Sale at New
Holland Sales Stables Inc.,
New Holland, PA

SAT SEPT 16 13 Acre farm-
ette, farm equip., tools,
antiques and household
goods Along Frysville Rd
2 mi northwest of Martin-
dale, Reuben B and Edna
W. Martin, owners, Nevin
Martin, Andrew Martin,
Paul Horst, Aucts

SAT. SEPT 16 - Along
Frysville Road, approx. 2
mi NW of Martindale 13
Acre Farmette, Farm Eq.,
Antiques Owner, Reuben
B & Edna W Martin Nevin
& Andrew Martin, Aucts

FRI SEPT. 22 - 1:30PM
State Graded Feeder Pig
Sale, Carlisle Livestock
Market, Inc Exit 12 Off
I-81, Phone 717-249-4511

SAT SEPT 23 Modern
Farm Mach., located New
Berlin, PA, Samuel U Beil-
er, owner, Bryan D Imes,
Auct.

SAT SEPT 23 - 10AM Fall
Heifer Sale at New Holland
Sales Stables Inc., New
Holland, PA

SAT SEPT 23 - 11AM, 71
acre farm located along
Spring Grove Rd., East

Earl Twp., Lanc Co., from
Rt 23 in Goodville follow
Spring Grove Rd., approx.
3 mi., terms by John M.
Huber Est., Horning Farm
Agency, Inc., Aucts

SAT SEPT 30 - Farm Toy
Show & Auction York, PA
Fairgrounds Main Bldg
717-768-3554

SAT. SEPT. 30 - 9AM, Real
Estate, Farm Equip.,
Cattle, located along E-
town Rd., 5 mi. north of
Manheim, Rapho Twp.,
Lanc. Co., PA, Anna G.
Ober, owner, Wolgemuth
Auction Service.

OCTOBER

WED. OCT. 4 - 9:30AM,
Annual Dairy Show and
Sale at the Belleville Lives-
tock Mkt., Belleville, PA.

FRI OCT 6 - 9AM Equip-
ment Sale at New Holland
Sales Stables Inc., New
Holland, PA

FRI OCT 13 - 1:30PM
State Graded Feeder Pig
Sale, Carlisle Livestock
Market, Inc. Exit 12 Off
I-81, Phone 717-249-4511.

TUES OCT 17 - 10AM
Quilt & Buggy Sale at New
Holland Sales Stables Inc.,
New Holland, PA.

WED OCT 25 - Dairy
Show & Sale at New Hol-
land Sales Stables Inc.,

New Holland, PA

FRI OCT. 27 - 1:30PM
State Graded Feeder Pig
Sale, Carlisle Livestock
Market, Inc Exit 12 Off
I-81, Phone 717-249-4511

NOVEMBER

FRI NOV. 3 - 9AM Equip-
ment Sale at New Holland
Sales Stables Inc., New
Holland, PA.

FRI NOV 3 - 6PM, selling
300-400 heifers, all sizes,
at the Belleville Livestock
Mkt., Belleville, PA

FRI. NOV. 10 - 1:30PM
State Graded Feeder Pig
Sale, Carlisle Livestock

Market, Inc. Exit 12 Off
I-81, Phone 717-249-4511.

FRI NOV. 24 - 1:30PM
State Graded Feeder Pig
Sale, Carlisle Livestock
Market, Inc Exit 12 Off
I-81, Phone 717-249-4511

DECEMBER

FRI. DEC. 13 - 1:30PM
State Graded Feeder Pig
Sale, Carlisle Livestock
Market, Inc Exit 12 Off
I-81, Phone 717-249-4511.

FRI DEC. 22 - 1:30PM
State Graded Feeder Pig
Sale, Carlisle Livestock
Market, Inc. Exit 12 Off
I-81, Phone 717-249-4511.

PENNSYLVANIA'S 11TH PERFORMANCE TESTED RAM LAMB AND INVITATIONAL EWE SALE

SATURDAY, AUGUST 5, 1989
1:00 P.M.

AT PSU'S AG ARENA
NEXT TO THE:

PENNSYLVANIA DEPARTMENT OF AGRICULTURE'S
MEAT ANIMAL EVALUATION CENTER
651 Fox Hollow Road
State College, PA 16803

Rams On Test:

1-Columbia	13-Hampshire	22-Suffolks
20-Dorsets	(1 Fall Born)	(2 Fall Born)
(5 Fall Born)	11-Shropshire	7-Polypays
	1-Montadale	(1 Fall Born)

CATALOGS AVAILABLE
UPON REQUEST
ABOUT JULY 23

For Information Contact:
GLENN EBERLY At (814) 238-2527
or write to the above address

Selling Approximately
50 Rams and 80 Ewes

Stop by and inspect the
Rams anytime

PUBLIC AUCTION 83 ACRE LANCASTER COUNTY FARM FARM EQUIP. - BEEF CATTLE - GRAINS SATURDAY, SEPTEMBER 30, 1989

9:00 A.M. Real Estate At 11:00 A.M.
Located along Elizabethtown Road, 5
Miles North of Manheim Rapho Twp.,
Lancaster Co., Pa.

83 Acres (more or less) Fertile Land, in a
high state of cultivation. 70 Acres tillable,
balance in pasture w/stream & pond and some
Woodland. Large Bank barn (92x47 ft.) w/
tobacco shed & dampening cellar - Pig barn &
chicken house attached. 37x40' Implement
shed w/corn cribs. 3-Bay concrete block build-
ing. 2 car garage plus other buildings. 2½
STORY 9-ROOM FRAME HOUSE. 1st.
floor: 4 rooms, large kitchen. 2nd floor: 5 Bed-
rooms, bath, closets, balcony, oil hot water
heat, basement & attic. Good roofs, drilled
well, macadam lane. Some road frontage.
Good productive farm. ZONED RURAL.

OPEN-SAT. August 12, 12 to 3, and Thurs-
day, August 24, 5 till 8 P.M. or call
717-665-5664 or 717-949-3102 for
appointment.

TERMS: 10% down day of sale, balance
Jan. 2, 1990. Sale subject to conditions to be
read day of sale.

Sale by
ANNA G. OBER
ROY OBER deceased

J. David Young Attorney
Wolgemuth Auction Service
Clyde H. Lic. #1036
Bob Ph. 717-665-6684
Dennis Ph. 664-3893

NOTICE

To assure that your
Public Sale appears
in the Public Sale
Section we must
have your advertise-
ment by 5 P.M. Tues-
day of each week's
publication.

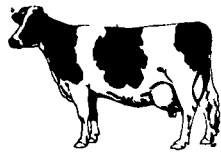
DEALER IN ALL KINDS OF LIVESTOCK

Also Crippled & Down Cattle

MARLIN S. IRWIN

Quarryville, PA
PH: 717-786-3016

NEW HOLLAND SALES STABLES, INC.



Located 12 Miles East of Lancaster,
just off Rt. 23, New Holland, Pa.
SPECIAL DAIRY SALE CONSIGNMENTS
For
WEDNESDAY, JULY 26, 1989
Helper Sale Starts At 11:00 A.M.

- * 1 load fresh and springer cows consigned by Norman and David Kolb.
- * 1 load fresh and springer cows consigned by Merle Brenneman.
- * 1 load fresh and springer cows consigned by Marvin Eshleman.
- * 1 load fresh and springer cows consigned by Raymond Smucker.
- * 1 load fresh cows consigned by Dale Hostetter.
- * 1 load fresh cows consigned by Albert Albright.

PLUS MANY MORE CONSIGNMENTS

For More Information Contact:

Abe Diffenbach 225L
717-354-4341-Barn

Norman Kolb
717-397-5538

Honey-Run Farm Complete Dispersal

Estate Of H.B. Simmons

Thurs., Aug. 3 - 9:30 a.m.- Centerville, PA
300 Registered and Grade Holsteins 300
170 Cows (130 Reg.) - 52 Bred Heifers (40 Reg.) - 80 Yrg. & Calves
Featuring 30 Top Red & White Holsteins

A RED MAGNET w/1042F has 8 Descendants selling:

- Red VG-88 Triple Threat dtr. with 713f
sells with Red VG-87. 841f Cavalier dtr.
who in turn has Red dtrs. selling by
Misty Maple and Enhancer.
- 2 Red Enhancer dtrs - bred heifer and
yearling.
- A VG 34,780m Glendell from the Magnet
has a VG-88 808f Elevation dtr. selling,
who in turn has two dtrs selling.

More Red & White Influence

- A VG-86 Red Triple Threat with 718f
from a VG-87 1305f dam sells. Also her
fancy Red 2y Misty Maple dtr. making
a fantastic 1y9m record 266d 22,519m
670f (still milking 66 lbs. 4.6%).
- A Red Enhancer bred heifer from a
2E-91 1363f Cavalier dam.

Other Top Families And Individuals Selling

- +1293M +59F +30P Rotate with 25,560
3.7 950, 2y.
- VG-86 Valiant with 6y 365d 27,690 4.2
1150 sells with 2 dtrs., a 18,920 4.2
789 2-year-old and an Enhancer calf.
- VG-87 Ivanhoe Star with 22,070m from
a VG Conductor from a 4E-92 dam
sells with 3 dtrs. and a maternal
sister by Pete.
- EX Glendell with 5y 30,340 3.7 1132
sells with 3 dtrs., a 3y Tony with 2-1
365 24,180 3.7 899 and a pair of nice
calves by Steady.
- Maternal sisters by Bova and Elevation
from a 3E 772f dam - a nice pair.
- 20,230m 2y Memorial and her Starbuck
maternal sister from a Bootmaker dam
from a VG 31,300m 1073f Milestone.
- 2 high record Bell dtrs, 4y 362 28,220
3.5 918 and 4y 365 26,650 4.6 1224
- 20,120m, 2y Valiant from a 2E-92 dam
with 32,450m.

Herd Summary

RHA - 152 Cows 18,022 3.9 699
3.3 596P

- Over 100 Head 1st & 2nd Lactation
- 30 Head Sell Fresh May - July
- 21 Due Aug. - Sept.
- Another 35 Head due in Fall

Top Service Sires: Dixiecrat (10), Levi (15), Bell (5), Valiant, Inspiration, Mark, Steady,
Ned Boy, etc. And nearly 30 to Red Sires

**NOTE: Watch for Ads on Machinery
& Full Line of Dairy Equipment - Selling August 14th**

Sale At The Farm: In Crawford Co., PA just off Route 77, approximately 18 miles northeast of Mead-
ville. Meadville is on I-79 41 miles south of Erie and 90 miles north of Pittsburgh

Calhoun Vac. - Tested for Interstate - Pregnancy Checked

**This Is Just A Sample From This Fine Herd
Call For Your Catalog and Plan To Attend**

- Owner -

Honey Run Farm

R.D. 2, Box 221, Centerville, PA 16804
Ken Iverson, Mgr. 814-694-2583

- Sale Staff -

Horace Backus 315-963-7231
Jay Howes 717-867-9236
Howard Hammond 814-664-8040
Mike Weimer 814-498-2047
Sherman Allen 814-382-2922

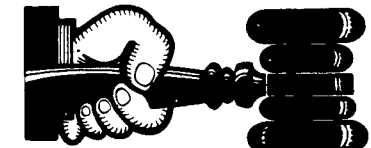
BACKUS ASSOCIATES, INC.

Sale Managers & Auctioneers

AU-000036-L

Mexico NY
315 953 7231

P O Box 424
Elizabethtown PA 17022
717 367 9236



AUCTIONEER'S DIRECTORY

DWIGHT D. MILLER AUCTIONEER QUALITY SERVICE

RD#2 Box 2716
Bethel, Pa.
(717) 933-5736

KREIDER & KLINE AUCTIONEERS

COMPLETE PROFESSIONAL AUCTION SERVICE

REAL ESTATE - FARMS & RESIDENTIAL

PERSONAL PROPERTY - ANTIQUES -

FARM STOCK SALES - LIQUIDATIONS

RANDAL V. KLINE LOYD H. KREIDER

AUCTIONEER-REALTOR AUCTIONEER

717-733-1006 717-786-3394

ROY E. GOOD, JR.

AUCTIONEER

215-445-4309

Auctioneer:

Steve Petersheim:
Steve Jr.



COMPLETE AUCTION SERVICE

Antiques
Household Goods
Farm Equipment
Real Estate

Take Note - Our New-Phone Number
215-593-2828