

## Public Auction Register

Closing Date Monday 5:00 P.M.  
of each week's publication

FRI OCT 27 - 1:30PM  
State Graded Feeder Pig  
Sale, Carlisle Livestock  
Market, Inc Exit 12 Off  
I-81, Phone 717-249-4511.

### NOVEMBER

FRI. NOV. 3 - 9AM Equip-  
ment Sale at New Holland  
Sales Stables Inc., New  
Holland, PA.

FRI. NOV. 3 - 6PM, selling  
300-400 heifers, all sizes,  
at the Belleville Livestock  
Mkt., Belleville, PA.

FRI. NOV. 10 - 1:30PM  
State Graded Feeder Pig  
Sale, Carlisle Livestock  
Market, Inc. Exit 12 Off  
I-81, Phone 717-249-4511.

FRI. NOV. 24 - 1:30PM  
State Graded Feeder Pig  
Sale, Carlisle Livestock  
Market, Inc. Exit 12 Off  
I-81, Phone 717-249-4511.

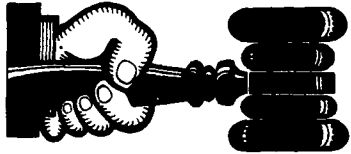
### DECEMBER

FRI. DEC 13 - 1:30PM  
State Graded Feeder Pig  
Sale, Carlisle Livestock  
Market, Inc Exit 12 Off  
I-81, Phone 717-249-4511.

FRI. DEC. 22 - 1:30PM  
State Graded Feeder Pig  
Sale, Carlisle Livestock  
Market, Inc. Exit 12 Off  
I-81. Phone 717-249-4511.

### NOTICE

To assure that your  
Public Sale appears  
in the Public Sale  
Section we must  
have your advertise-  
ment by 5 P.M. Tues-  
day of each week's  
publication.



### AUCTIONEER'S DIRECTORY

## DWIGHT D. MILLER AUCTIONEER QUALITY SERVICE

RD#2 Box 2716  
Bethel, Pa.  
(717) 933-5736



COMPLETE PROFESSIONAL AUCTION SERVICE  
REAL ESTATE — FARMS & RESIDENTIAL  
PERSONAL PROPERTY — ANTIQUES —  
FARM STOCK SALES — LIQUIDATIONS

RANDAL V. KLINE  
AUCTIONEER-REALTOR  
717-733-1006

LLOYD H. KREIDER  
AUCTIONEER  
717-786-3394

ROY E. GOOD, JR.  
AUCTIONEER  
215-445-4309

## ATTENTION

Thinking of having a public auction?  
Complete herd dispersal, farm real estate,  
farm equipment, Antiques or  
specialty sales.  
For more information or free consultation  
Call:

RD 1, Box 103  
Marletta, PA 17547  
Lic. #RY000011-L  
717-426-3769  
717-293-8783



Ask for Darwin or Rodney  
We now offer your real estate  
through brokerage or auction

Auctioneer:  
Steve Petersheim:  
Steve Jr. Petersheim:



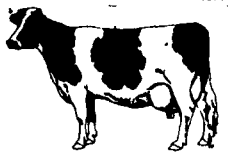
## COMPLETE AUCTION SERVICE

Antiques  
Household Goods  
Farm Equipment  
Real Estate

Take Note - Our New Phone Number  
215-503-2828

## Dairy and Livestock Sales

### NEW HOLLAND SALES STABLES, INC.



Located 12 Miles East of Lancaster,  
just off Rt. 23, New Holland, Pa.

### SPECIAL DAIRY SALE CONSIGNMENTS

For

WEDNESDAY, JULY 19, 1989

Heifer Sale Starts At 11:00 A.M.

30 HEAD CANADIAN COWS, PUREBREDS AND GRADES. 10  
FIRST CALF HEIFERS, FRESH AND SPRINGERS, CONSIGNED BY  
ROY JOHNCOX.

\*\*\*\*\*

1 TOP LOAD NEW YORK STATE COWS, FRESH, PUREBREDS  
AND GRADES. 1 FRESH PACLAMAR ASTRONAUT. DAM VG  
MILESTONE DTR. AS A 4 YR. OLD 305 DYS. OVER 17,000M. 4.1T.  
2ND DAM GP OVER 22,000M WITH A 3.8T. ALSO FANCY 4 YR.  
OLD, FRESH, WAPA ARLINDA CONDUCTOR W/ME OVER  
18,000M. DAM OVER 17,000M. CONSIGNED BY NORMAN AND  
DAVID KOLB.

\*\*\*\*\*

1 REG. MANDINGO BULL, BREEDING AGE. DAM GP 83 AS 5 YR.  
OLD 305 DYS, 23,200M. 4.0T 928F. 2ND DAM 81 PTS. AS 5 YR. OLD  
305 DYS. 23,210M. 4.0T. 927F.

\*\*\*\*\*

York County herd of 52 head in all stages of production.

\*\*\*\*\*

60 Head vaccinated open heifers, weighing 700 to 800 lbs.

\*\*\*\*\*

25 Head 1st calf springing heifers from one herd.

\*\*\*\*\*

#### Also Selling

- \* 1 load fresh and springer cows consigned by Norman and David Kolb.
- \* 1 load fresh and springer cows consigned by Merle Brenneman.
- \* 1 load fresh and springer cows consigned by Marvin Eshleman.
- \* 1 load fresh and springer cows consigned by Raymond Smucker.
- \* 1 load fresh cows consigned by Dale Hostetter.
- \* 1 load fresh cows consigned by Albert Albright.

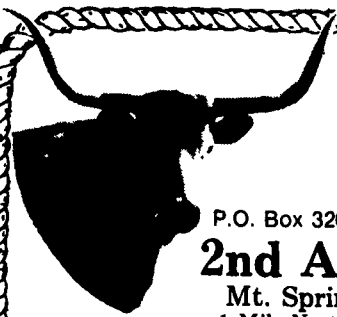
#### PLUS MANY MORE CONSIGNMENTS

For More Information Contact:

Abe Diffenbach 225L  
717-354-4341-Barn

Norman Kolb  
717-397-5538

## AGRICULTURE'S LEADING EDGE FFA



## ROCKING D HORSE & CATTLE CO.



P.O. Box 326, Fredericksburg, PA 17026

717-865-5239

## 2nd ANNUAL SALE • JULY 21 & 22

Mt. Springs Camping Grounds & Rodeo Arena, Shartlesville, PA  
1 Mile North Of Shartlesville Off I-78, Exit 8 In The Heart Of PA Dutch Country.  
AUCTIONEER, EDDIE WOOD, FROM WYNNEWOOD, OK.

### FRIDAY NIGHT, JULY 21 AT 7:00 P.M.:

- \*New & Used Tack \*New & Used Horse & Livestock Trailers (All Sizes)
- \*Skulls \*Horns \*Etc.
- \*A Few Indian Articles (Head Dress)

PARTY TIME - FRIDAY NIGHT, JULY 21 (After Tack Sale)  
\*Chicken Bar-B-Q \*Live Country & Western Band \*Refreshments

### SATURDAY, JULY 22 AT NOON

Guest Speaker: Bob Kropp From Oklahoma State University, (With Department of Animal Science)

To Be Sold Directly After Cattle  
40 Head Ranch Broke Horses

Most Are Registered. Dean Zimmerman Will Have The  
Horses Again This Year.

Consigned from the Lyn Lee Farms: **SALER CATTLE**

3 cow calf combs. (3 in 1 pkg.) which will be either 1/2, 3/4,  
or 7/8.

3 Saler Bulls - 3/4 Blood Red Scuarred (born 3/88), son of  
Uncle who was sired by Nephew. 3/4 black polled bull (born  
9/88) sired by Polled Panther. Full blood bull (5 year old)  
son of Mr. President.

This is the newest & most popular breed on the market  
today. They cross well with Longhorns or any other breed  
of cattle. They are noted for their \*small calving ease  
\*good feed utilization \*durability \*longevity \*dollars  
in your pocket.

Also an **OUTSTANDING SALER BULL** that comes from  
the PA Performance tested Bull Sale that was held at Penn  
State. He is Polled 7/8 LLF Polled Nephew (born 3/10/88) wt.  
77 lbs., wt. on 3/31/89 - 1098 lbs. Daily weight gain 3 51 lbs.,  
estimated loin area 17.6 sq. in.  
Foundation Pure **WATUSI BULL** born 6/14/88 Red & White  
bull, shows alot of horn growth.

- \*Roping \*Pleasure \*Reining
- \*Cutting \*Barrel Racing \*Paints
- \*Pintos \*Appaloosa
- \*A Few Saddle Mules  
(Coon Hunting)
- \*Dark Red Sorrel Mammoth Jack  
coming 2 years old, 14 hands  
& growing.
- \*3 Yearling Sorrel Mammoth  
Jennies

**PROPER I.D. REQUIRED**  
There will be a qualified PA State  
veterinarian present on sale dates  
to answer questions, give advice or  
whatever is necessary.

Horses will be shown  
working cattle on  
Thursday evening &  
Friday afternoon &  
6 P.M. & Saturday until  
11 A.M. in the  
Rodeo Arena.



## Public Auction

Of 2 Parcels Of Land  
Sat., Aug. 5th  
at 10:00 A.M.

Located approx. 1 mile from square in  
Bowmansville just off Laughtown Rd.  
along Spruce St. Brecknock Twp. Lanc.  
Co. Pa.

Parcel #2 consists of large 2 1/2 story  
stone & frame house. 1st. floor has kitch-  
en, living room, family room, full bath. 2nd.  
floor has 5 bedrooms. Attic used for stor-  
age, also large 2 car garage.

BARN Construction is stone & frame bank  
barn. Upper level used for hay, straw &  
equip. storage. Lower level open stables  
for horses or cattle. Condition of buildings  
good.

LAND 23 Acres, approx. 12 acres, good  
usable ground, remainder in pastureland  
with stream flowing thru. Terrain mostly  
gentle slope.

ZONING Residential low with twp. sewer  
line crossing property line. Fronts on  
Spruce St. for several hundred ft. and  
small part fronting on Laughtown Rd.

PARCEL #1 consists of 10 acres of land  
with approx. 6 acres good tillable land,  
also stream flowing thru this parcel. Small  
part meadowland and small part wood-  
land. Terrain gentle slope.

ZONING Residential low. This parcel also  
fronts on Spruce St.

PARCEL #1 and PARCEL #2 to be offered  
separately and as an entirety.  
Inspection anytime by appt. Call (215)-  
286-0135

10% dn. day of sale.

Terms By:

John Z. and  
Elizabeth H. Zimmerman

Auctioneers:  
Elton Horning #000434 L  
Rodney Horning #002167 L