

**National Grain Market**

St. Joseph, MO  
July 3, 1989

GRAIN PRICES SHARPLY HIGHER ON WEDNESDAY. HOT, DRY WEATHER AND EXTENDED FORECAST FOR MORE OF THE SAME FORCED WHEAT, CORN AND SOYBEAN PRICES HIGHER. CONTINUING CONDITIONS CAUSE FEAR OF CROP DETERIORATION.

INTERNATIONAL WEATHER WEEK OF JUNE 25-JULY 1, 1989: UNITED STATES...RAIN BENEFITED CROPS IN THE WESTERN CORN BELT AND PORTIONS OF THE CENTRAL AND NORTHERN GREAT PLAINS. RAIN CONTINUED TO SLOW FIELDWORK IN THE DELTA, WHERE SOIL MOISTURE WAS MOSTLY SURPLUS TO ADEQUATE. WINTER WHEAT WAS MOSTLY FAIR TO POOR. HARVEST WAS 39 PERCENT COMPLETE. RAIN CONTINUED TO SLOW HARVEST IN THE CENTRAL GREAT PLAINS. SPRING WHEAT WAS MOSTLY GOOD TO FAIR. HEADING WAS 45 PERCENT COMPLETE. CORN WAS MOSTLY GOOD TO FAIR WITH 3 PERCENT OF THE ACREAGE IN THE SILKING STAGE. PLANTING WAS 93 PERCENT COMPLETE. FIVE PERCENT OF THE ACREAGE WAS BLOOMING. CANADA...BENEFICIAL RAIN COVERS ALL BUT SOUTHERN ALBERTA AND PARTS OF THE SOUTHEAST. WESTERN USSR...WIDESPREAD SHOWERS BENEFIT MOST CROPS. IN THE NEW LANDS, SHOWERS BENEFIT SPRING GRAINS IN THE SOUTHERN URALS, BUT UNSEASONABLY WARM, DRY WEATHER IN PARTS OF WEST-SIBERIA AND CENTRAL KAZAKHSTAN INCREASES STRESS ON SPRING GRAINS APPROACHING THE HEADING STAGE. EUROPE...MUCH NEEDED RAIN HELPS REDUCE DRYNESS FOR CROPS IN THE NORTH-WEST. SOUTH ASIA...DRY POCKETS PERSIST OVER SOUTHERN INDIA, STRESSING VEGETATIVE CROPS.

BENEFICIAL RAIN CONTINUES IN CENTRAL AND EASTERN AREAS. EASTERN ASIA...HEAVY RAIN AND FLOODING CONTINUE IN SECTIONS OF THE YANGTZE VALLEY. HEAT STRESSES CROPS IN SECTIONS OF THE NORTH CHINA PLAIN. SOUTHEAST ASIA...WIDESPREAD SHOWERS RETURN TO TAHILAND, BRINGING RELIEF TO CROPS ADVANCING INTO REPRODUCTION. SOUTH AMERICA...IN SOUTH-CENTRAL BRAZIL, LIGHT SHOWERS BENEFIT VEGETATIVE WHEAT. IN ARGENTINA, DRY WEATHER HELPS FINAL SUMMER CROP HARVESTS AND ACCELERATES THE PACE OF WHEAT PLANTING. AUSTRALIA...WIDESPREAD RAIN FAVORS WINTER GRAINS IN WESTERN AUSTRALIA. FREEZING TEMPERATURES SLOW GROWTH OF WINTER GRAINS IN NEW SOUTH WALES AND VICTORIA.

EXPORT NEWS: NONE REPORTED.  
DATE CHANGE YEAR AGO  
07/05/89 07/03/89 07/06/88 WHEAT:  
KANSAS CITY 4.35-4.38 UP 10-9  
3.89-3.91 MINNEAPOLIS 4.61 3/4 UP 12  
4.36 1/2 PORTLAND 4.54-4.57 UP 3-4  
4.02-4.07 ST. LOUIS 3.98-4.02 UP 11-13  
3.64-3.70  
CORN, U.S. NO. 2 YELLOW: KANSAS CITY 2.76-2.80 UP 6-5 3.21-3.28  
MINNEAPOLIS 2.77 3/4 UP 9 3/4 3.00  
3/4 SO. IOWA 2.81-2.83 UP 10-8  
3.03-3.19 OMAHA 2.62-2.68 UP 7-8  
3.10-3.11

SOYBEANS, NO. 1 YELLOW: KANSAS CITY 7.62-7.67 UP 20 9.44-9.65  
MINNEAPOLIS 7.48 1/2 UP 28 9.31 1/2  
SO. IOWA 7.52-7.64 UP 25-33 9.30-9.50  
C. ILL. PROCESSORS 7.69 1/2-7.84 UP  
28-22 9.36 1/2-9.61 1/2

KANSAS CITY, US NO. 1 HARD RED WINTER WHEAT, ORDINARY PROTEIN. MINNEAPOLIS, US NO. 1 DARK NORTHERN SPRING WHEAT, 14% PROTEIN. PORTLAND, NO. 2 SOFT WHITE WHEAT, ST. LOUIS, NO. 2 SOFT RED WINTER WHEAT.

FUTURES CLOSE: KANSAS CITY (SEPT) WHEAT 4.22 1/2 UP 9 1/2 4.02  
1/2 MINNEAPOLIS (SEPT) WHEAT 4.16 UP 13 3/4 4.27 1/2 CHICAGO

(SEPT) WHEAT 4.11 1/2 UP 9 1/4 4.06  
3/4 (SEPT) CORN 2.72 3/4 UP 10 3.48 3/4  
(NOV) SOYBEANS 7.02 UP 30 9.86 1/2  
EXPORT: BARGE OR RAIL, PORT OF NEW ORLEANS OR NORTH TEXAS GULF. NO. 1 HARD RED WINTER WHEAT ORDINARY PROTEIN 4.67 UP 10 4.27 NO. 2 SOFT RED WINTER WHEAT 4.19-4.22 UP 9-12 4.02-4.10  
NO.2 YELLOW CORN 3.04-3.07 UP 9-12 3.62-3.63 NO.2 YELLOW SORGHUM RAIL 4.99 UP 3 BARGE 5.17 UP 17 6.04-6.18 NO.2 YELLOW SOYBEANS 7.90-7.92 UP 35-37 9.96-10.00.

**Westminster Hay**

Westminster, Md.

Tuesday, July 4, 1989

Report Supplied by Auction

TOTAL LOADS: 7.  
ALFALFA: 1.60 AND 1.75.  
TIMOTHY MIX: 1.80 BALE.  
TIMOTHY: 1.45 BALE.  
MIXED HAY: 1.50 AND 1.65 BALE.  
NEXT WEEK, JULY 11, IS THE LAST HAY SALE OF THE SEASON.  
REOPENING SEPT. 5.

**Belleville Hay**

Wednesday, July 5

Belleville, PA

Report Supplied by Auction

TOTAL LOADS: 31 LDS. HAY.  
ALFALFA: 52.50-150.00.  
MIXED HAY: 45.00-85.00.  
STRAW: 3 LOADS, 80.00-82.50.

**Leinbach's Hay**

Shippensburg, PA

July 1 and 4. Report Supplied by Auction

TOTAL LOADS: 19.  
ALFALFA: 91.00.  
MIXED HAY: 46.00-77.50.  
TIMOTHY: 51.00-60.00.  
GRASS: 52.00-70.00.  
STRAW: 74.00.  
EAR CORN: 97.50.  
MULCH HAY: 25.00-35.00.

**Some markets not covered by PDA or USDA due to holiday**

**Chester County Hay**

Coatesville, PA

Wed., July 5

TOTAL LOADS: 5.  
ALFALFA: 120.00-132.00.  
STRAW: 100.00.  
TIMOTHY MULCH: 55.00.

**North Jersey Market**

Hackettstown, N.J.

Tues., July 4, 1989

Hay—Straw & Grain Report  
MIXED HAY: 1.50 BALE.  
TOTAL: 1 LOAD.

**Keister's Hay**

Middleburg, PA

Tuesday, July 4

Report supplied by auction  
MIXED HAY, 4 LOADS, 75.00-115.00.  
STRAW: 7 LOADS, 37.50-70.00.  
EAR CORN: 3 LOADS, 120.00-135.00.

**Dewart Hay**

Dewart, PA.

Monday, July 3, 1989

Report Supplied by Auction  
TOTAL LOADS: 2 LDS. HAY, 63.00 and 83.00.  
STRAW: 2 LOADS, 70.00 AND 74.00.  
CORN: 1 LOAD, 119.00.

**Eighty-Four Livestock**

Eighty-Four, PA

July 3, 1989

CATTLE 187...PDA...Compared with last Monday's market: Slaughter cows mostly steady to weak. Few Select slaughter steers 65.00-69.00, Standard 58.50-64.00, few Utility 54.00-58.50. Few Select sl. heifers 64.00-67.00, Standard 56.50-61.00, few Utility 50.00-56.00. Breaking Utility & Commercial sl. cows 48.00-54.50, Cutter & Bon. Utility 47.00-51.50, Canner & low Cutter 39.50-47.50, Shells down to 29.50. Yield

Grade No. 1, 1000/2150 lbs. sl. bulls 57.50-71.50, No. 2, 900/1400 lbs. 53.00-58.00. Feeder Cattle: Few Medium & Large Frame No. 1, 400/600 lbs. steers 75.00-87.00, few Medium #2, 700 lbs. 79.00. Medium Frame No. 1, 400/600 lbs. heifers 69.00-78.00. Medium Frame No. 1, 480/600 lbs. bulls 70.00-81.00, 600/800 lbs. 66.00.

CALVES 291...Few Choice vealers 94.00-108.00, Good 88.00-98.00, Standard & Good 90/120 lbs. 81.00-94.00, 60/85 lbs. 70.00-84.00, few Utility 55/70 lbs. 50.00-70.00. Farm Calves: Holstein bulls 90/125 lbs. 100.00-165.00; Hol. heifers 80/115 lbs. 80.00-135.00. Beef cross 80/115 lbs. bulls & heifers 80.00-135.00.

HOGS 154... Barrows and gilts .25 to .50 lower. US No. 1-2 240/255 lbs. 48.70-49.70, 1-3 218/260 lbs. 47.00-48.80, lot 2-3 280 lbs. 46.00, 2-4 260/295 lbs 42.00-43.00. US No. 1-3 325/600 lbs. sows 33.00-35.00, 2-3 300/550 lbs. 30.00-33.00. Boars 31.00-33.50.

FEEDER PIGS 40...US No. 2-3 20/40 lbs. feeder pigs 10.00-17.00, 60/65 lbs. 27.00-30.00 --- per head.

SHEEP 124...High Choice & Prime 85/100 lbs. spring slaughter lambs 70.00-73.50, lot Choice 91 lbs. 61.50 Good & Choice 60/75 lbs. feeder lambs 59.00-70.00. Slaughter sheep 18.00-23.50.

GOATS 14...Medium 30.00-35.00, Small 15.00-25.00 --- all per head.

**Lebanon Valley Livestock**

Fredericksburg, PA

REPORT NOT AVAILABLE FOR JULY 4, 1989

**HOSTETTER PORK**



Wanted To Buy Crippled and Disabled Sows and Boars -

Hogs Slaughtered For Federal Inspection

PHONE 717-274-7609

Note!

One More Evening Sale

FRIDAY, JULY 28 - 7:00 PM ON THE FARM MONTHLY

**BRED GILT SALE**

Sale To Start Promptly Every 4 Weeks

Located 4 miles east of former location, 1 mile off 472 midway between Quarryville & Oxford, PA, 1 mile south of Kirkwood, turn west off 472 at Union Church (Street Rd.) 1 mile to crossroad turn left, 2nd farm on right. Hill Road. Watch for sale signs.

Validated Brucellosis  
•Free Herd #169  
Qualified Pseudorabies  
Free Herd #55  
50 to 60 Head

We have White Diamond F2's crossbred to Chester White & some 3-way cross - York, Landrace & Duroc.

Vaccinated for Lepto, Erysipias, Rhinitis, E'Coll, Pasteueralla

Hand mated with Breeding Dates

Local Truck Available  
No Hogs Sold On Commission

JOHN B. STOLTZFUS

60 Hill Rd., Kirkwood, Pa.

Abe Diefenbach, Auctioneer AU225L

NEXT SALE FRI., AUG. 25, 1:00 P.M.

**ATTENTION FARMERS**

The New Way To Market Your Livestock

HATFIELD AND MOYER  
PACKING CO. AND PACKING CO.  
Will Receive Hogs Will Receive Cattle

At The

BLAIR-BEDFORD  
BUYING STATION  
RD 1 Martinsburg, Pa.

MONDAYS - Hogs 7:30 AM to 12 Noon

Cattle & Calves 7:30 AM to 4 PM

THURSDAYS - Cattle & Calves

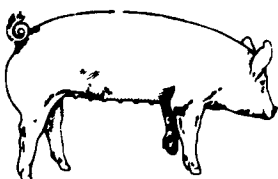
7:30 AM to 4 PM

- No commission or yardage fees deducted from check
- Livestock weighed and paid for immediately
- You may call our office sale day for prices

DALE R. HOOVER - Owner

Business 814-793-3077

Residence 814-793-2657



EMERY'S  
BUYING  
STATION

OPEN TO RECEIVE  
YOUR MARKET HOGS

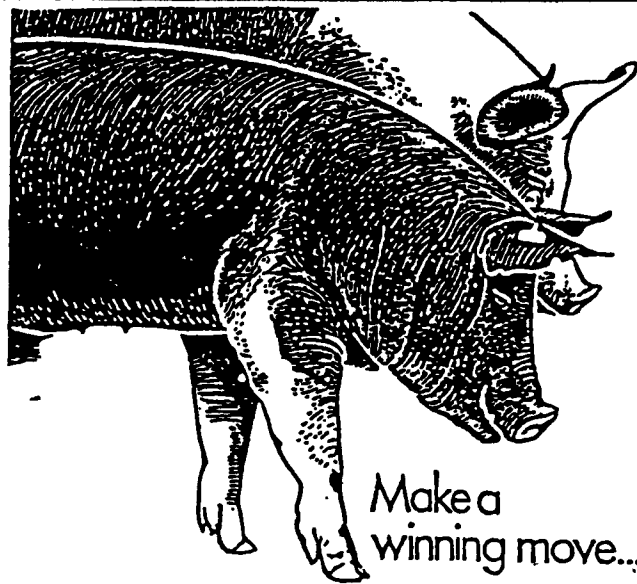
AT THE GREEN DRAGON MARKET  
RD 4, EPHRATA, PA 17522  
1 MILE NORTH OF EPHRATA  
ON NORTH STATE STREET.

HOURS: MONDAY, TUESDAY, and  
WEDNESDAY 7:00 A.M. to 11:30 A.M.

215-458-5677 Residence  
717-733-9648 Office

YOU ARE PAID FOR YOUR  
HOGS IMMEDIATELY

Ken & Lois Emery, Proprietors



Make a winning move...

...Contract with Purina Mills, Inc.

- Single source Feeder Pigs available for 1000 to 1200 head Finishing Floors
- Also accepting new and existing sow herds

We Supply

- Quality Purina Feeds
- Sound Genetic Program
- A Service Representative To Assist You
- Competitive Contract Payment

Call Us Today

1-800-873-5300

Purina Mills, Inc.  
Serving The Needs  
Of Agriculture