

# TICO MANUFACTURING, INC.

IRRIGATION HEADQUARTERS EASTERN UNITED STATES

RT. 13, WILLIAMSTOWN, N.Y. 13493  
24 HR. PHONE (315) 964-2214

IN VIRGINIA AREA CALL:  
LLOYD INGRAM (703) 369-4486

## PUMP, Don't Haul Your MANURE!

WITH TICO IRRIGATION and BAUER ROTA-PUMPS  
...you can pump and spread in one day what would  
take a week to haul, regardless of field conditions

### TICO/FERBO AUTOMATIC HARD HOSE REELS

ACRES IRR/WK.	ACRES IRR/RUN	HOSE O.D.	HOSE I.D.	IRRIGATED LENGTH	WIDTH	MODEL	PRICE
25	2.0	2"	1.6"	700'	180'	50-180	\$5,250
50	4.0	2.5"	2.1"	820'	210'	63-250	\$11,900
60	4.0	3.1"	2.8"	1150'	240'	75-320	\$15,900
75	5.0	3.3"	2.9"	1100'	240'	82-300	\$15,900
90	6.0	3.6"	3.0"	1130'	250'	90-350	\$19,900
130	7.5	4.3"	3.7"	1130'	290'	110-350	\$23,900
110	8.0	4.3"	3.7"	1290'	275'	110-400	\$28,900
145	9.0	5.0"	4.0"	1140'	320'	125-350	\$29,900
130	9.0	5.0"	3.9"	1450'	380'	125-450	\$34,900

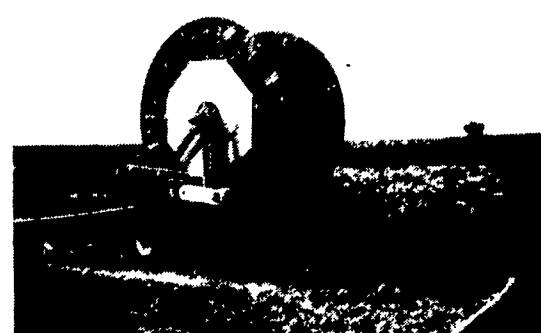
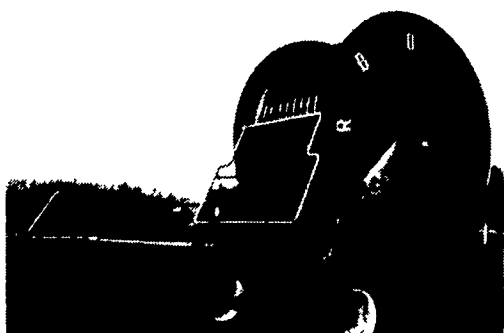
As A Special You Can DEDUCT 15% Off Any Price Quoted Or  
We Will Provide You With A FREE Pump When You Purchase A Hose Reel.



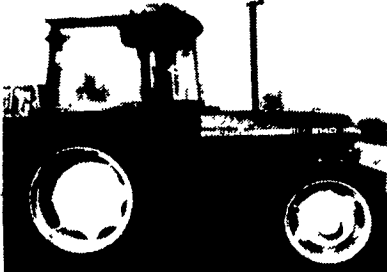
**VERMEER HOSE REEL:**  
4"x1250' - For Manure or Water Irrigation, pumps any type of manure (dairy, chicken, beef, veal, hog, etc.), Fair Condition- \$12,500

### USED IRRIGATION PIPE SPECIALS

98	5"x20'	McDowell	\$45 each
76	6"x20'	McDowell	\$60 each
40	6"x20'	Ireco	\$60 each
90	5"x20'	Ireco	\$45 each
50	4"x40'	Ireco w/Sprinklers	\$50 each
20	2"x40'	Ireco Steelume	\$35 each
105	2"x20'	Ireco Steelume	\$20 each
32	5"x30'	Ireco Steelume	\$70 each
30	10"x30'	Ring	\$150 each
1	Ag Rain Soft Hose Traveler 4 1/2" Hose		\$7,500
1	6/71, 200 HP, Detroit Diesel		\$12,500
1	3/53, 95 HP Detroit Diesel		\$7,950
1	Model 90 Bauer 300DT Hose Reel		\$9,900
1	50/150 Bauer Hard Hose, 25 A Reel		\$3,950
1	Rebuilt Bauer Roto Manure Pump...Reg. \$5,950		NOW \$3,750
1	88 Hale 6" PTO Pump		\$3,500
1	Hale 3 Pt. 500 GPM		\$1,750
1	Hale 50 FB3 R1000		\$3,250
1	Gorman-Rupp 64 AG 4"		\$2,500
1	Gorman-Rupp 66 D2G 6"		\$3,500
1	6 Cyl. Ford Diesel 6x6, 1750 GPM, Rebuilt		\$10,000
1	Detroit 6/71 High Pressure Rebuilt		\$12,500
1	Detroit 6/71 High Volume Rebuilt		\$12,500



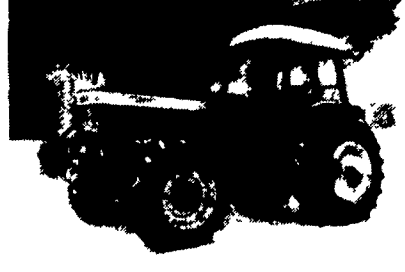
84 JD 4250, 120 HP, MFWD, C/A, 20.8x38, 3100 Hrs., 2 Rem., Quad.....\$34,500



83 JD 2750 (2140), 75 HP, 4-WD, Cab, 3650 Hrs., 13.6R38 (New).....\$18,500



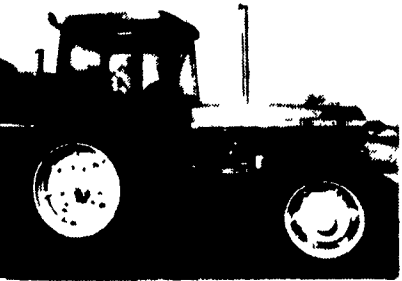
82 JD 2750 (2140), 75 HP, 2 WD, 2400 Hrs., C/A, 13.6x38R.....\$17,900



83 FD TW-25, 140 HP, 4 WD, C/A, 1980 Hrs., 18.4x38.....\$32,900  
SPECIAL \$31,900



82 JD 4050 (4040S) 4WD, C/A, 2250 Hrs., Turbo, 18.4x38 (New), 2 Remotes.....\$20,900  
\$25,900



81 JD 2950 (3140), 85 HP, 4 WD, Cab, 3700 Hrs., 18.4x38R (New), 2 Remotes, Hi-Lo.....\$21,500



80 JD 4440, 130 HP, 4 WD, C/A, 4171 Hrs., 18.4x38R, (New) Quad.....\$22,900

- 84 JD 4250, 120 HP, Mech. 4WD, C/A, 18.4x38, 2690 Hrs., 2 Remotes, Quad.....\$34,500
- 83 JD 2950 (3040), 85 HP, 4 WD, C/A, 16.9x38R, 2442 Hrs., Hi-Lo.....\$22,900
- 89 JD 2355N, 55 HP, 4 WD, 14.9x24, 0 Hrs., TSS.....\$21,500
- 80 JD 4240, 110 HP, 2 WD, C/A, 18.4x38R, 3200 Hrs., 2 Remotes, Quad.....\$17,900
- 83 JD 2750 (2140S) 65 HP, 2 WD, C/A, 13.6x38, 2700 Hrs., Hi-Lo.....\$15,500
- 83 JD 2550 (2040S), 65 HP, 2 WD, Cab, 13.6x36, 2400 Hrs.....\$14,500
- 83 JD 2550, (2040S), 65 HP, 2 WD, Cab, 13.6x38, 2570 Hrs.....\$14,500
- 74 JD 4230, 100 HP, 2 WD, 18.9x38, 5739 Hrs.....\$11,900
- 80 JD 2240, 50 HP, 2 WD, 14.9x28, 2800 Hrs.....\$9,900
- 72 JD 4320, 116 HP, 2 WD, 20.8x34, Cab, 2 Remotes, Synchro.....\$9,500
- 82 JD 4010, 80 HP, 2 WD, 15.5x38, Wide Front End.....\$4,950
- 82 FD 7710 86 HP, 4 WD, Cab, 16.9x38 2 Remotes, Dual Power.....\$21,900
- 82 FD 7610, 84 HP, 2 WD, 15.9x38, Cab, 3100 Hrs.....\$14,900
- 74 IH 966, 95 HP, 4 WD, Cab, 18.4x38, 4400 Hrs., 2 Rem.....\$9,900
- 81 Case 2090, 110 HP, 2 WD, C/A, 23.1x34, 2500 Hrs., 2 Rem.....\$14,900
- 87 Mitsubishi 250D, 22 HP, 4 WD, 606 Hrs., 11.2/10x24 (New) w/Woods Mower.....\$8,500
- 76 Muer Hill 110, 110 HP, 4 WD, 4-Post Cab, 18.4x30, New Clutch.....\$7,500
- Bomford 72" Mid-Mount Mower.....\$2,950
- Bomford 80" Side Mount Mower.....\$5,000

- Pettibone PM-245 DA Loader, 4 WD, Cab, 17.5x25, As Is Special.....\$7,500
- 80 Bolens Isaki 6165, 15 HP, 4WD, 500 Hrs., 8x16 (Turf), w/Great Bend Loader-48".....\$5,250
- 77 IH 570 Spreader.....\$2,500
- 70 New Holland 282 Baler.....\$2,500
- 77 New Holland 357 Feed Grinder.....\$2,500
- Snyder 300 Gal. Corn Sprayer.....\$1,500
- Hay Conveyor.....\$1,500

### SPECIALS

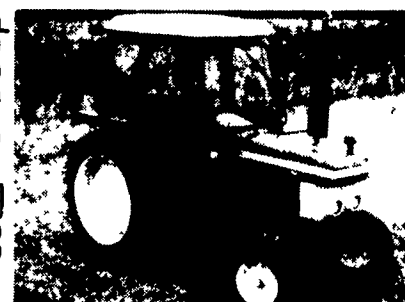
- 64 JD 2010, 47 HP, 2 WD, 14.9x28, Synchro.....\$8,500  
\$5,600
- 62 Cat 922A Loader, 80 HP 4WD, 14.00x24.....\$12,500  
\$10,900
- 72 White Moline, 4 WD, Cab, 2 Remotes, 18.4x38.....\$11,900  
\$10,900
- 77 AC 7080, 180 HP, 2 WD, C/A, 20.8x38, 3800 Hrs., 2 Remotes.....\$10,900  
\$9,600
- 71 Mack Tractor, Diesel.....\$5,000
- 5 Head Tiller, Used.....\$2,950
- 70 IH F544, 55 HP, 15.5x38, 2840 Hrs., 2 Rem., Hydro-static, Mechanics Special As Is.....\$3,500

### STEEL TANK TRAILERS

- 1965 STST 7,000 Gal. Steel Tanker, 38'.....\$1,500
- 1956 QU/CI 6,000 Gal. Steel Tanker, 35'.....\$1,000
- 18,840 Gal. Vertical Fuel Tank Used For Fuel, Grain, Storage, Water, and Waste.....\$1,950
- 23,000 Gal. Tank.....\$2,300



82 FD 6610, 72 HP, 2 WD, Cab, 16.9x38, 2713 Hrs., 2 Remotes, Stand.....\$14,900  
\$12,900



82 FD 5610, 63 HP, 2 WD, Cab, 13.6/12x38 (New), Dual Power.....\$14,900  
\$12,900



80 JD 4240, 110 HP, 4WD, C/A, 18.4x38, 3884 Hrs., 2 Remotes, Quad.....\$18,900



**BEFORE YOU BUY ANY TRACTOR...**  
NEW or USED... 2WD or 4WD...  
CHECK the UNBELIEVABLY  
**LOW PRICES**  
at



## DAVEY JOAN'S TRACTOR SUPER-MART

Location: Junction of NY 104 and NY 13  
Williamstown, NY 13493

**1-315-964-2294**