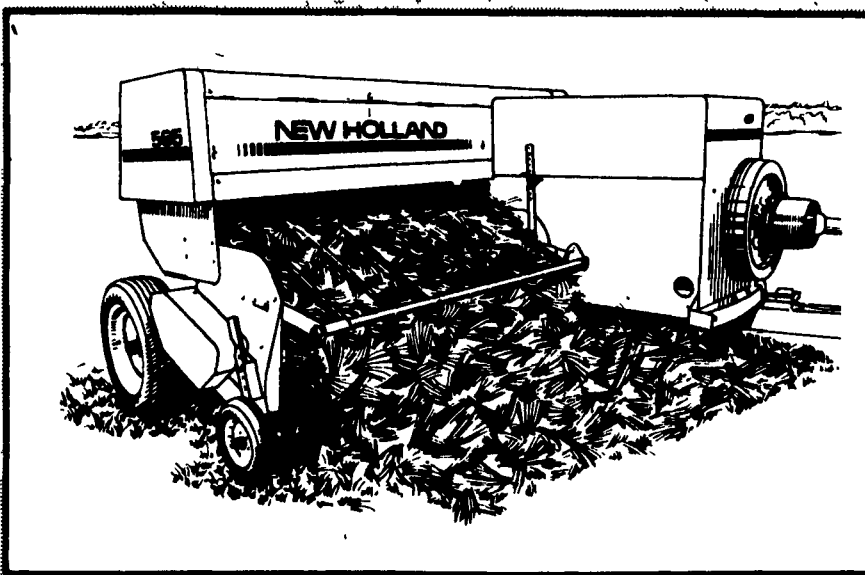
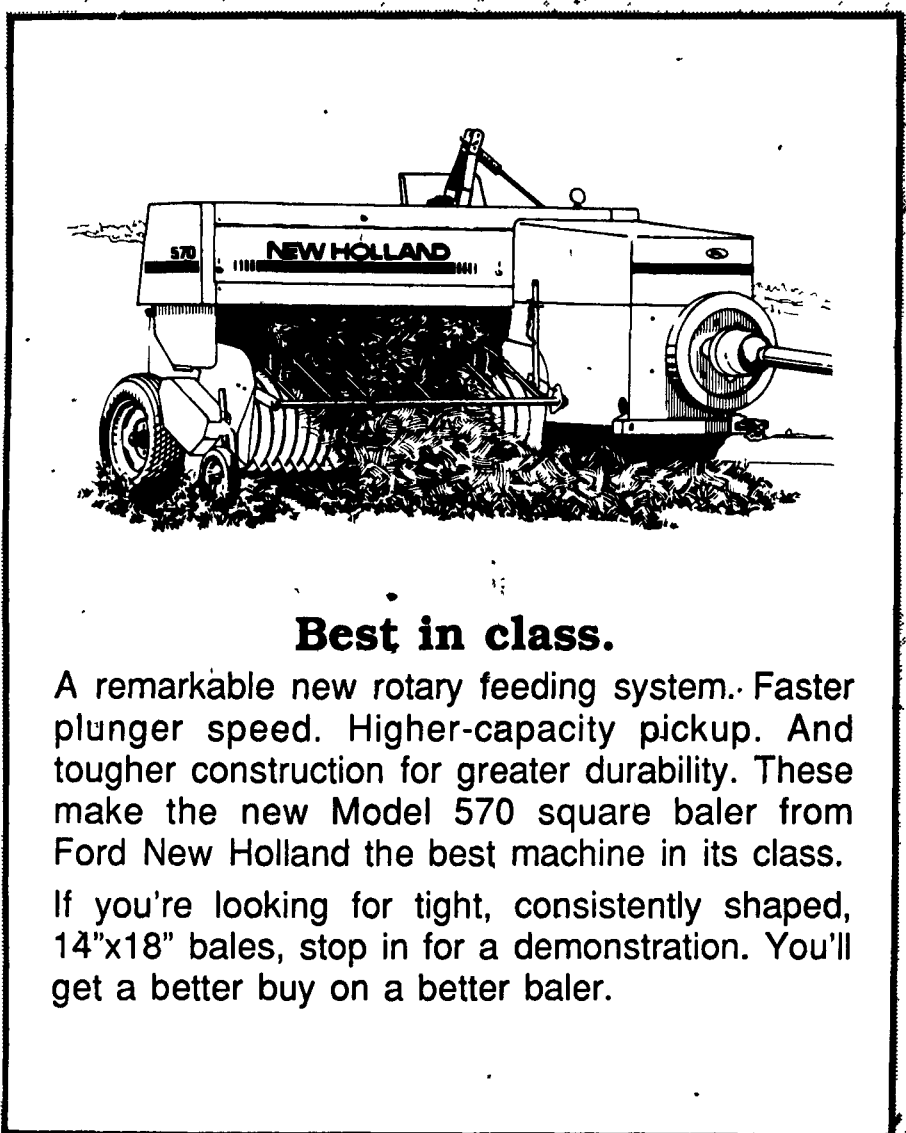


Introducing The New Square Baler Line Up From Ford New Holland



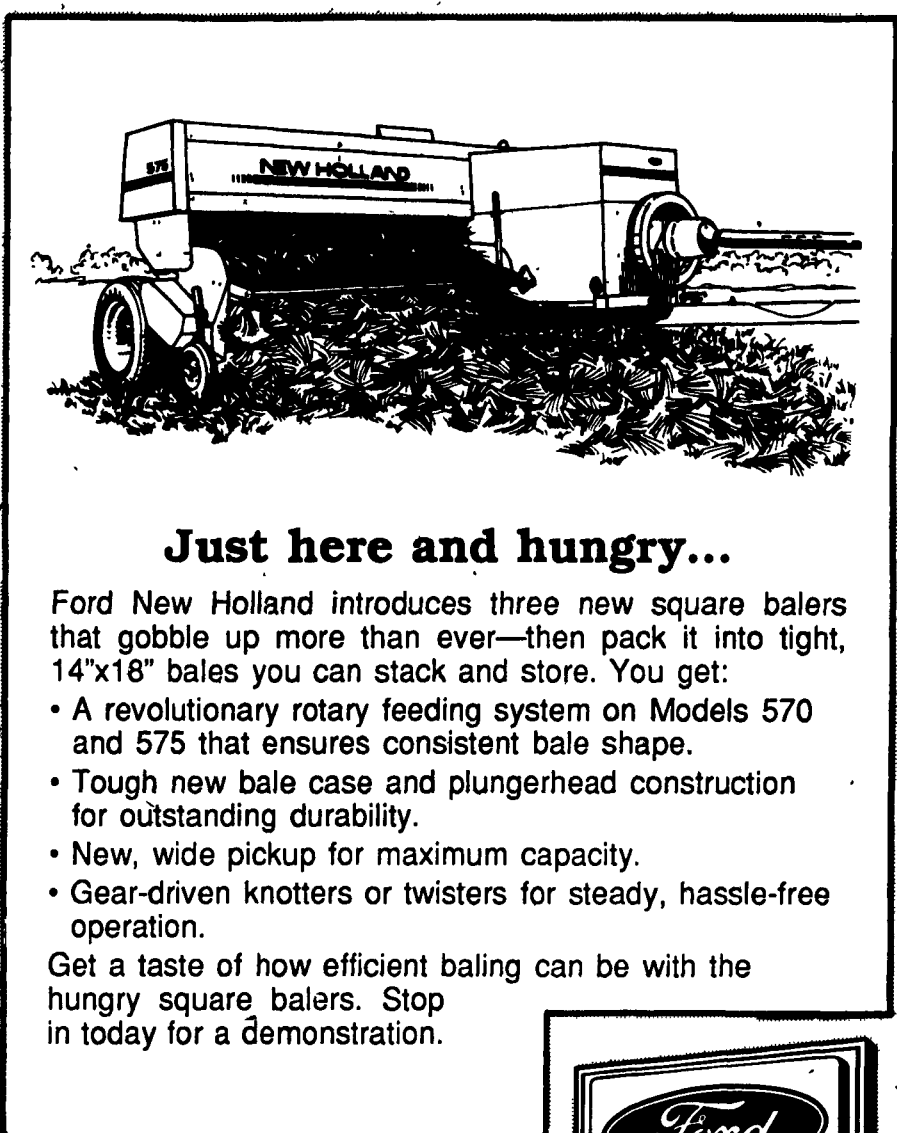
Faster and tougher.

The new Model 565 square baler from Ford New Holland works faster because of a wider, high-capacity pickup. And it's tougher, too, with new high-strength bale case and plungerhead construction, as well as a beefed-up feeder bar. The "565" consistently gives you tight, 14"x18" bales — so stop in today for a demonstration of the best baler of its kind.



Best in class.

A remarkable new rotary feeding system. Faster plunger speed. Higher-capacity pickup. And tougher construction for greater durability. These make the new Model 570 square baler from Ford New Holland the best machine in its class. If you're looking for tight, consistently shaped, 14"x18" bales, stop in for a demonstration. You'll get a better buy on a better baler.



Just here and hungry...

Ford New Holland introduces three new square balers that gobble up more than ever—then pack it into tight, 14"x18" bales you can stack and store. You get:

- A revolutionary rotary feeding system on Models 570 and 575 that ensures consistent bale shape.
- Tough new bale case and plungerhead construction for outstanding durability.
- New, wide pickup for maximum capacity.
- Gear-driven knotters or twisters for steady, hassle-free operation.

Get a taste of how efficient baling can be with the hungry square balers. Stop in today for a demonstration.

**See Your Ford New Holland Dealer
For Current Incentive
Programs.**

