

# Lancaster Co. Livestock Market Auctions

## Lancaster Livestock Auction

Monday, June 26, 1989  
Report Supplied by USDA

Cattle	Calves	Hogs	Sheep	Goats
Monday's Auction	1076	118	433	794 680
Last Monday's Auction	1065	57	306	728 370
Last Year's Auction	783	136	581	716 643

CATTLE: COMPARED TO LAST THURSDAY, SLAUGHTER STEERS WERE 50-1.00 LOWER. NO RECENT COMPARISON ON SLAUGHTER HEIFERS. LARGE SHARE OF SUPPLY CARRYING CONSIDERABLE FILL DUE TO HOT AND HUMID WEATHER. COWS STEADY. BULLS GENERALLY FIRM TO 1.00 HIGHER. SUPPLY INCLUDED 67% SLAUGHTER STEERS, 9% SLAUGHTER HEIFERS, 12% COWS, AND 12% BULLS.

SLAUGHTER STEERS: HIGH CHOICE AND PRIME 3-4 1125-1380 LB. 74.00-75.50; FEW CHOICE 2 1150-1300 LB. 74.00-76.50; CHOICE 2-4 1050-1425 LB. 71.50-74.00, MOSTLY 72.50-73.50; MIXED SELECT AND CHOICE 2-3 1000-1300 LB. 69.50-71.75; SELECT 2-3 67.50-70.00; HOLSTEINS, FEW LOTS CHOICE 2-3 1400-1670 LB. 65.75-68.00, FEW SELECT 2-3 1250-1400 LB. 62.75-63.75, FEW STANDARD 1-2 56.00-60.00.

SLAUGHTER HEIFERS: CHOICE 2-4 1000-1200 LB. 69.50-72.25, FEW 73.25; MIXED SELECT AND CHOICE 2-3 900-1100 LB. 69.00-70.50; SELECT 2-3 64.50-69.00, FEW HEIFERETTES INCLUDED.

COWS: BREAKING UTILITY AND COMMERCIAL 2-4, BULK 47.50-51.50; CUTTER AND BONING UTILITY 1-2, BULK 49.50-52.00, HI DRESSING 53.00-55.00; CANNER AND LOW CUTTER, BULK 47.00-49.50.

BULLOCKS: FEW HIGH SELECT TO LOW CHOICE 2-3 1175-1300 LB. 65.76-67.25.

BULLS: YIELD GRADE 1 1200-2050 LB. 60.50-66.75, HIGH DRESSING 67.00-70.25, COUPLE HEAD 71.50, LOW DRESSING 57.25-60.50; YIELD GRADE 2 1200-2170 LB. 55.00-61.50, 1000-1200 LB. 54.00-58.75.

VEAL CALVES: VEALERS AND SLAUGHTER CALVES STEADY TO 5.00 HIGHER IN LIGHT TEST.

VEALERS: GOOD TO LOW CHOICE 150-200 LB. 75.00-110.00.

SLAUGHTER CALVES: GOOD AND CHOICE 300-600 LB. 70.00-85.00.

RETURNED TO FARM: BULK 90-125 LB. HOLSTEIN BULLS 110.00-135.00, 70-100 LB. 75.00-85.00.

HOGS: COMPARED TO LAST WEDNESDAY BARROWS AND GILTS MOSTLY 1.00 LOWER; SOWS WEAK TO 50 LOWER.

BARROWS AND GILTS: US 1-2 215-250 LB. 48.00-49.00; US 1-3 215-265 LB. 45.00-47.00.

SOWS: US 1-3 300-650 LB. 30.00-33.50; US 1 FEW 300-375 LB. 34.50.

SHEEP: SPRING LAMBS 3.00-4.00 HIGHER; SLAUGHTER EWES STEADY.

SPRING LAMBS: CHOICE AND PRIME 80-110 LB. 68.00-74.00; CHOICE 40-80 LB. 60.00-75.00.

SLAUGHTER EWES: UTILITY AND GOOD 20.00-30.00; YEARLINGS AND TWO-YEAR OLDS 30.00-50.00.

GOATS: ALL GOATS SOLD BY THE HEAD. LARGE 75.00-110.00, THIN 55.00-75.00; MEDIUM 50.00-60.00, THIN 40.00-50.00; SMALL, MAINLY KIDS 30.00-40.00, THIN 15.00-30.00.

## Vintage Livestock Auction

Tuesday, June 27, 1989  
Report Supplied by USDA

Cattle	Calves	Sheep	Goats
Today	683	732	6 0
Last			
Tuesday	1041	756	1 0
Last Year	702	897	6 4

CATTLE: COMPARED TO MONDAY; SLAUGHTER STEERS WERE STEADY TO FIRM IN REDUCED SUPPLIES; NOT ENOUGH HOLSTEIN STEERS OR SLAUGHTER HEIFERS ON HAND FOR AN ACCURATE TEST; COWS FULLY STEADY; NOT ENOUGH BULLS FOR A TEST. SUPPLY INCLUDED NEAR 46% STEERS AND 51% COWS.

SLAUGHTER STEERS: FEW HIGH CHOICE AND PRIME 3-4 1150-1450 LB. 74.60-77.00; FEW CHOICE 2 1140-1400 LB. 74.50-77.50; CHOICE 2-4 1070-1500 LB. 72.00-74.50; MOSTLY 73.00-74.00; FEW MIXED SELECT AND CHOICE 2-3 1000-1300 LB. 71.00-72.00; SELECT 2-3 68.00-71.00; HOLSTEINS, FEW CHOICE 2 1340-1750 LB. 66.75-67.60.

SLAUGHTER HEIFERS: FEW HEAD CHOICE 3 965-1030 LB. 71.75-72.25.

COWS: BREAKING UTILITY AND COMMERCIAL 2-4, BULK 49.00-52.00; CUTTER AND BONING UTILITY 1-2, LO DRESSING 47.00-49.00, BULK 49.00-52.75, HI DRESSING 53.00-54.25; CANNER AND LOW CUTTER 1-2 LO DRESSING 42.00-46.00, BULK 46.00-49.00.

BULLS: FEW YIELD GRADE 2 1000-1500 LB. 57.75-60.75, FEW LOW DRESSING 53.00-56.00.

VEAL CALVES: VEALERS WERE GENERALLY STEADY. SUPPLY INCLUDED 640 IN GRADED FARM WITH 520 RETURNED TO THE FARM.

VEALERS: GOOD TO LOW CHOICE, FEW 150-350 LB. 80.00-104.00, 100-150 LB. 86.00-100.00, 70-100 LB. 75.00-91.00; LOW GOOD 100-150 LB. 64.00-81.00, 70-100 LB. 60.00-78.00.

RETURNED TO FARM: HOLSTEIN BULLS; 25 HEAD 139 LB. 143.00; 244 HEAD 100-125 LB. 120.00-144.00; 75 HEAD 80-100 LB. 126.00-140.00; 105 HEAD 80-100 LB. 89.00-103.00. HOLSTEIN HEIFERS; 63 HEAD 92-113 LB. 93.00-118.00.

SHEEP: NOT TESTED.  
GOATS: NOT TESTED.

## King's Hay

Kirkwood, Pa.

Tuesday, June 27, 1989

Report Supplied by Auction

TOTAL LOADS: 26.

ALFALFA: 64.00-98.00.

ALFALFA MIX: 40.00-90.00.

MIXED HAY: 65.00-96.00.

TIMOTHY AND TIMOTHY MIX: 40.00-95.00.

STRAW: 80.00-121.00.

EAR CORN: 100.00-116.00.

## Lancaster Livestock Auction

Wed., June 28, 1989

Cattle	Calves	Hogs	Sheep	Goats
Wed's Auction	39	6	444	0 0
Last Wed's Auction	91	6	258	0 0
Last Year's Auction	36	11	471	0 0

CATTLE: Not enough of any class on offer for a market test.

VEAL CALVES: No market test.  
HOGS: Compared to Monday barrows and gilts 50-1.00 higher; sows steady to firm.

BARROWS AND GILTS: US 1-2 215-245 lb 49.00-49.75. US 1 215-245 lb 50.00-50.50. US 1-3 215-255 lb 48.00-48.75.

SOWS: US 1-3 300-650 lb 30.50-33.75.  
SHEEP: No market test.  
GOATS: No market test.

## HEINSEY'S POULTRY

Roots, E. Petersburg

Tuesday, June 27

MUSCOVY DUCKS DRAKES 2.06-2.34.

MUSCOVY DUCKS HENS 2.00-2.18.

PEKIN DUCKS .38-.48.

RED FOWL 4-4% LBS. .30-.42; 5-6 LBS. .38-.52.

CROSSBRED FOWL 5-10 LBS. .18-.42.

CROSSBRED ROOSTER 4-6 LBS. .30-.78; 7-11 LBS. .30-.62.

GUNIA FOWL 2.04-2.50.

BANTY ROOSTERS 3.00-6.50.

BANTY HENS 1.50 2.75.

LEGIHORN HENS .32-.38.

LEGIHORN ROOSTERS .30-.52.

SILKIES 3.00-5.25.

GEESE 8-12 LBS. .10-.18.

PIGEONS .75-1.35.

WHITE PIGEONS 2.25-3.00.

RABBITS 4-6 LBS. .60-.82.

RABBITS 7-11 LBS. .30-.68.

BUNNIES .10-1.00.

GUINEA PIGS 1.00-2.75.

GOATS 38.00-59.00.

KID GOATS 27.00-40.00.

DOVES 3.00-4.00.

CHUKERS 4.50-4.85.

PULLETS 5-7 LBS. .30-.48.

TOTAL AMOUNT COOPS 872.

## New Holland Livestock

New Holland, Pa.

Cattle	Calves	Sheep	Goats
Today	1062	563	179 130
Last Thursday	1455	548	227 86
Last Year	663	590	147 192

CATTLE: SLAUGHTER STEERS STEADY TO FIRM. HOLSTEIN STEERS AND SLAUGHTER HEIFERS NOT ACCURATELY TESTED. COWS FAIRLY ACTIVE, MOSTLY 1.00 HIGHER. BULLS NOT FULLY TESTED.

SLAUGHTER STEERS: HIGH CHOICE AND PRIME 3-4 1150-1425 LBS. 74.25-76.25, SEVERAL HEAD 77.75-77.85; CHOICE 2-4 1050-1400 LBS. 72.00-74.75, MOSTLY 73.00-74.00; MIXED SELECT AND CHOICE 2-3 1100-1425 LBS. 70.00-72.00; SELECT 2-3 67.50-70.00; A FEW CHOICE HOLSTEIN 2-3 1150-1550 LBS. 68.00-70.00; SELECT 2-3 62.75-67.00.

SLAUGHTER HEIFERS: A FEW CHOICE 2-3 1000-1100 LBS. 70.25-71.25; FEW SELECT 2-3 67.00-70.00.

COWS: BREAKING UTILITY & COMMERCIAL 2-4 49.50-53.25; CUTTER & BONING UTILITY 1-3 LOW DRESSING 46.00-49.50, BULK 49.75-53.00, HIGH DRESSING 53.25-55.00; CANNER & LOW CUTTER 1-2 LOW DRESSING 44.00-46.50, BULK 46.50-50.00.

BULLS: A FEW YIELD GRADE 1 1400-2100 LBS. 61.00-64.25, INDIVIDUAL 69.50; A FEW YIELD GRADE 2 1000-1500 LBS. 58.00-62.25.

VEAL CALVES: VEALERS MOSTLY 5.00 LOWER; DEMAND RELATIVELY LIGHT ON HOLSTEIN BULLS TO RETURN TO FARM.

VEALERS: A FEW GOOD TO LOW CHOICE 100-130 LBS. 85.00-91.00; 75-100 LBS. 75.00-90.00; LOW GOOD 70-100 LBS. 50.00-71.00.

RETURNED TO FARM: BULK OF HOLSTEIN BULLS WEIGHED 85-110 LBS. BULLS: 100-120 LBS. 112.00-120.00; FEW 94.00-110.00; 80-100 LBS. 90.00-120.00; MOSTLY 95.00-115.00; HOLSTEIN HEIFERS 80-100 LBS. 85.00-100.00.

SHEEP: SPRING SLAUGHTER LAMBS 5.00-10.00 HIGHER ON A LIGHT TEST. SLAUGHTER EWES FIRM TO 1.00 HIGHER.

LAMBS: CHOICE 90-110 LBS. SPRING LAMB 70.00-78.00; 60-90 LBS. 74.00-82.00; 40-60 LBS. 71.00-79.00.

SLAUGHTER SHEEP: UTILITY AND GOOD 25-32.00; CULLS 19.00-25.00; FEW MIDDLE-AGED BUCKS 34.00-44.00; AGED 21.00-30.00.

GOATS: LARGE 53.00-76.00; SEVERAL 90.00-100.00; MEDIUMS 35.00-50.00; SMALL MAINLY KIDS 24.00-34.00, WITH A FEW TO 38.00, ALL BY THE HEAD.

## Lancaster County Weekly

Lancaster, PA

June 30, 1989

CATTLE CALVES

THIS WEEK	2875	1425
LAST WEEK	3652	1367
LAST YEAR	2184	1634

CATTLE: Compared to late last week slaughter steers closed generally steady despite downward pressure early in the week; not enough holstein steers or slaughter heifers for an accurate test this week; cows mostly 1.00 higher; bulls generally steady. Supply included 59% slaughter steers, 6% slaughter heifers, 28% cows and 7% bulls.

SLAUGHTER STEERS: High Choice and Prime 3-4 1150-1450 lb 74.00-76.25, few individuals 77.00-77.85; Choice 2 1150-1400 lb 74.00-77.50; Choice 2-4 1050-1400 lb 71.50-74.50, mostly 72.50-74.00; mixed Select and Choice 2-3 1100-1400 lb 69.50-72.00; Select 2-3 67.50-70.00; Holsteins, few Choice 2-3 1350-1750 lb 66.00-70.00, few Select 2-3 62.75-67.00.

SLAUGHTER HEIFERS: Few Choice 2-4 965-1200 lb 69.50-72.25, few 73.25; mixed Select and Choice 2-3 900-1100 lb 69.00-70.00.

COWS: LOW DRESSING BULK HIGH DRESSING Breaking Utility and Commercial 2-4 47.50-53.25 late 49.50-53.25 Cutter and Boning Utility 1-3 46.00-49.50 49.00-53.00 53.00-55.00. Canner and low Cutter 42.00-46.50 46.00-50.00.

BULLOCKS: Not tested.  
BULLS: Yield grade 1 1200-2100 lb 60.50-66.75, few high dressing 67.00-71.50; yield grade 2 1000-1400 lb 57.00-62.25.

VEAL CALVES: Vealers mostly 5.00 lower. Demand was rather light for Holstein bulls to return to farm.

VEALERS: Good to low Choice few 150-350 lb 80.00-110.00, 100-150 lb 85.00-100.00 closing 85.00-91.00, 75-100 lb 75.00-91.00; low Good 70-100 lb 50.00-78.00.

RETURNED TO FARM: Bulk 90-115 lb Holstein bulls; 100-140 lb 112.00-144.00, mostly 112.00-130.00, few 94.00-112.00; 80-100 lb 80.00-120.00, few 126.00-140.00, mostly 95.00-115.00. Holstein heifers 80-115 lb 85.00-118.00.



**B&R CATTLE CO.**  
RD 1, Marietta, PA  
17547  
Office Phone:  
(717) 653-8164  
Specializing In  
Stockers &  
Feeders  
**JOHN BOWMAN**  
Ph (717) 653-5728  
**RON RANCK**  
Ph (717) 656-9849

**LEBANON VALLEY LIVESTOCK MARKET, INC.**  
1 mile East of  
Fredericksburg  
along Rt. 22  
**PHONE**  
**JONESTOWN**  
**865-2881**

Flea Market Auction  
every Tuesday at 12:30.  
Tools, Eggs, Produce,  
etc.  
Buyers & Sellers  
Welcome

**HAY, STRAW & CORN**  
**— SALE —**  
Every Friday At 11 AM



**GREEN DRAGON MARKET & AUCTION**

RD No. 4 Ephrata, Pa. 717-738-1117  
1 mile North of Ephrata on N. State St.

Out of State Buyers - Cash or Certified Check Only



## AUCTIONS

MONDAY

9:00 A.M. — Slaughter Bulls, Heifers, Steers, Cows

10:00 A.M. — Goats, Veal Calves, Lambs

12 Noon — Slaughter Hogs

WEDNESDAY

8:00 A.M. — Slaughter Hogs

10:00 A.M. — Slaughter Bulls, Heifers, Steers, Cows

11:00 A.M. — Veal Calves, Lambs

FRIDAY

11:00 A.M. — Stocker and Feeder Cattle

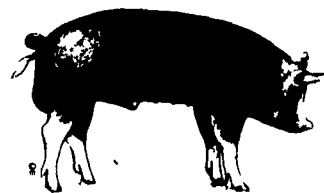
SATURDAY

8:00 A.M. — Slaughter Hogs

**Graded Feeder Cattle Sale**  
**Fri., July 7 - 11:00 A.M.**  
Graded Cattle sold in lots of 10 or more

**LANCASTER STOCKYARDS, INC.**

1147 Lititz Pike Lancaster, Pennsylvania 17601  
Serving The Community For 90 Years



## VINTAGE SALES STABLES, INC.

Sale Every Tuesday  
10:30 A.M.

Slaughter Cattle Auction -  
Steers, Bulls, Heifers, Cows,  
Feeder Cattle.

Get calves in early. We start to grade and weigh at 2:00.

Business Phone  
717-768-8204

Home Phone  
215-458-8518

L. Robert Frame, Manager  
Box 100 Paradise, PA

10 miles East of Lancaster on Rt. 30