

Public Auction Register

Closing Date Monday 5:00 P.M.
of each week's publication

FRI. AUG. 25 - 1:30PM
State Graded Feeder Pig
Sale, Carlisle Livestock
Market, Inc. Exit 12 Off
I-81, Phone 717-249-4511.

Machinery Sale at the Bel-
leville Livestock Market,
Belleville, PA, selling all
kinds of machinery on con-
signment. Glick, Gibboney,
Gilligan, Aucts.

SAT. AUG. 26, Harness
and Harness Shop Equip-
ment, blacksmith tools,
wagons and sleighs,
located in Ephrata, PA,
Mervin Z. Martin, owner,
Bryan D. Imes, Auct

SAT SEPT 2, 4th Annual
Cosignment Sale, Williams
Grove Historical Steam
Engine Assoc., Harold
Scheib or Little IKE Eichel-
berger, Auct.

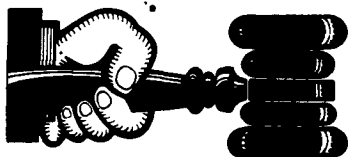
TUES. AUG. 29 - 6PM Gun
and Clock Sale at New Hol-
land Sales Stables Inc.,
New Holland, PA

FRI. SEPT. 8 - 1:30PM
State Graded Feeder Pig
Sale, Carlisle Livestock
Market, Inc. Exit 12 Off
I-81, Phone 717-249-4511.

FRI SEPT. 8 - 7PM Horse
Sale at New Holland Sales
Stables Inc., New Holland,
PA.

SEPTEMBER

FRI. SEPT 1 - 9AM, Fall



AUCTIONEER'S DIRECTORY



KLINE & KREIDER AUCTIONEERS

COMPLETE PROFESSIONAL AUCTION SERVICE
REAL ESTATE — FARMS & RESIDENTIAL
PERSONAL PROPERTY — ANTIQUES —
FARM STOCK SALES — LIQUIDATIONS

RANDAL V. KLINE
AUCTIONEER-REALTOR
717-733-1006

LLOYD H. KREIDER
AUCTIONEER
717-786-3394

ROY E. GOOD, JR.
AUCTIONEER
215-445-4309

Auctioneer:

Steve Petersheim:



COMPLETE AUCTION SERVICE

Antiques
Household Goods
Farm Equipment
Real Estate

Take Note - Our New Phone Number
215-593-2828



ALPHEUS L. RUTH

HORNING FARM AGENCY, INC.

SPECIALIZING IN
FARM AUCTIONS

Qualified Pedigree service for herd dispersals.
Call us for a free Market Evaluation.

215-286-5183

MAIN STREET
MORGANTOWN, PA 19543

Dairy and Livestock Sales

SAT. SEPT. 9 - 10AM,
Complete Farm Machinery
Dispersal, located on Blue
Rock Rd., just off Rt. 999,
between Millersville &
Washington Boro, Charles
K Nissley, owner, Wolge-
muth Auction Service.

FRI. OCT. 6 - 9AM Equip-
ment Sale at New Holland
Sales Stables Inc., New
Holland, PA.

State Graded Feeder Pig
Sale, Carlisle Livestock
Market, Inc. Exit 12 Off
I-81, Phone 717-249-4511.

FRI. OCT. 13 - 1:30PM
State Graded Feeder Pig
Sale, Carlisle Livestock
Market, Inc. Exit 12 Off
I-81, Phone 717-249-4511.

FRI. DEC. 22 - 1:30PM
State Graded Feeder Pig
Sale, Carlisle Livestock
Market, Inc. Exit 12 Off
I-81, Phone 717-249-4511

MON. SEPT. 11 - 9AM
Lebanon Valley Auct. Co.
Inc. Annual Fall Consig-
ment Auction. Farm Trac-
tors, Eq. & Related Items.
Located Lebanon Area
Fairgrounds.
717-866-2135.

TUES. OCT. 17 - 10AM
Quilt & Buggy Sale at New
Holland Sales Stables Inc.,
New Holland, PA.

WED. OCT. 25 - Dairy
Show & Sale at New Hol-
land Sales Stables Inc.,
New Holland, PA.

FRI. OCT. 27 - 1:30PM
State Graded Feeder Pig
Sale, Carlisle Livestock
Market, Inc. Exit 12 Off
I-81, Phone 717-249-4511.

FRI. SEPT. 15 - 9AM
Equipment Sale at New
Holland Sales Stables Inc.,
New Holland, PA.

SAT. SEPT. 16 13 Acre far-
mette, farm equip., tools,
antiques and household
goods. Along Frysville Rd.
2 mi. northwest of Marti-
dale, Reuben B. and Edna
W. Martin, owners, Nevin
Martin, Andrew Martin,
Paul Horst, Aucts.

FRI. SEPT. 22 - 1:30PM
State Graded Feeder Pig
Sale, Carlisle Livestock
Market, Inc. Exit 12 Off
I-81, Phone 717-249-4511.

SAT. SEPT. 23 - 10AM Fall
Heifer Sale at New Holland
Sales Stables Inc., New
Holland, PA.

SAT. SEPT. 23 - 11AM, 71
acre farm located along
Spring Grove Rd., East
Earl Twp., Lanc. Co., from
Rt. 23 in Goodville follow
Spring Grove Rd., approx.
3 mi., terms by John M.
Huber Est., Homing Farm
Agency, Inc., Aucts.

SAT SEPT 30 - Farm Toy
Show & Auction York, PA.
Fairgrounds Main Bldg
717-768-3554.

NOVEMBER

FRI. NOV. 3 - 9AM Equip-
ment Sale at New Holland
Sales Stables Inc., New
Holland, PA.

FRI. NOV. 3 - 6PM, selling
300-400 heifers, all sizes,
at the Belleville Livestock
Mkt., Belleville, PA

FRI. NOV. 10 - 1:30PM
State Graded Feeder Pig
Sale, Carlisle Livestock
Market, Inc. Exit 12 Off
I-81, Phone 717-249-4511.

FRI. NOV. 24 - 1:30PM
State Graded Feeder Pig
Sale, Carlisle Livestock
Market, Inc. Exit 12 Off
I-81, Phone 717-249-4511.

DECEMBER

FRI. DEC. 13 - 1:30PM

OCTOBER

WED. OCT. 4 - 9:30AM,
Annual Dairy Show and
Sale at the Belleville Lives-
tock Mkt., Belleville, PA

NOTICE

To assure that your
Public Sale appears
in the Public Sale
Section we must
have your advertise-
ment by 5 P.M. Tues-
day of each week's
publication.

SALE EVERY

TUESDAY

Graded Sale
1st Tuesday each
month
2 P.M.
Horse Auction
2nd Saturday each
month
1 P.M.

**FAUQUIER
LIVESTOCK
EXCHANGE**

Marshall, Va.
703-364-1566

PIGS

STATE GRADED SALE
FRI., JULY 7
1:30 P.M.

WESTMINSTER
LIVESTOCK AUCTION
Westminster, MD

Now holding 2 sales
each month on 1st &
3rd Fridays.

Phone (301) 848-9820
or (301) 857-1179

DEALER IN ALL KINDS
OF LIVESTOCK

Also Crippled & Down-Cattle

MARLIN S. IRWIN

Quarryville, PA
PH: 717-786-3016

NEW HOLLAND SALES STABLES, INC.



Located 12 Miles East of Lancaster,
just off Rt. 23, New Holland, Pa.
SPECIAL DAIRY SALE CONSIGNMENTS

For
WEDNESDAY, JULY 5, 1989
Heifer Sale Starts At 11:00 A.M.

HERD OF 45 HEAD FROM INDIANA COUNTY
IN ALL STAGES OF PRODUCTION.

- * 1 load fresh and springer cows consigned by Norman and David Kolb.
- * 1 load fresh and springer cows consigned by Merle Brenneman.
- * 1 load fresh and springer cows consigned by Marvin Eshleman.
- * 1 load fresh and springer cows consigned by Raymond Smucker.
- * 1 load fresh cows consigned by Dale Hostetter.
- * 1 load fresh cows consigned by Albert Albright.

PLUS MANY MORE CONSIGNMENTS
For More Information Contact:

Abe Diffenbach 225L
717-354-4341-Barn

Norman Kolb
717-397-5538

HERON RUN FARM COMPLETE DISPERSAL

Washington, New Jersey

July 11, 1989

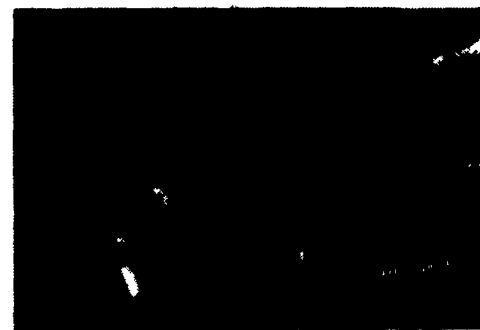
Auction: 11:30 Country Breakfast: 8:30
RHA 13713 5.3 723 4.1 Protein 18 EX 30 VG 13 D
65 Cows in Milk 30 Bred Heifers 25 Calves

FANCY JERSEYS

4 COWS OVER 1000 lbs. FAT; 6 COWS OVER 900 lbs. FAT
8 COWS OVER 20000 lbs. MILK



Herons Betsy - EX 90
2-01 267 2 14597 5.4 781 4.0 583 RIP



Valleystream Jody's Jean B ET - #X 91
4-03 305 2 15664 5.6 882 4.4 682 DHIR

COW FAMILIES ARE THE STRONG POINT OF THIS HERD

DAIL - VG 88 Silver Beacon, twice over 1000 fat sells with 1 dtr. by Bright spot with 18,492 5.5 1016 scored VG 87, EX Grand DTR. by Jody's Imp. Surville.

VIOLET - EX 91 dtr. of J.F.D. Title with 21,561 4.5 965, 4 Reliant dtrs. sell 1 Beacon son, 1 Reliant son, 1 milking two year old dtr. by Silver Beam also sells.

ALLURE - One of TOP BRASS best dtrs. 3-11 20835 4.8 1004, sells with A.I. Contract, bred to BOOMER SOONER, TWO preg heifers carrying ET's from Allure sell with her (BOOMER SOONER ET'S) What a Package!

BEA - EX 94 dtr. of Nippersink 7-0 365 24695 4.4 1082. This is truly one of the Breeds BEST COWS, and she transmits too!

BETSY - EX 90 at TWO yrs. of age and what a record she is working on 2-0 227 12717 5.4 684 RIP.

NARCI - EX 91 - THE KIND FOR TODAY - 3-3 365 15478 5.9 913 with 75% of 5.4 on first test as a 4 yr. old.

B LADY & LOU - Mat. sisters from Beacon dam with 4-2 305 17981 5.8 1043 B LADY - 2-0 296 11753 6.2 730 due sale time to BOOMER SOONER LOU - 4-2 15839 5.6 880 due sale time to TOP BRASS.

HOPPIE - VG 87 dtr., of Magic 3X over 20000# milk, dtr. by Beacon VG 88 at 2 yrs. and BRIGHT SPOT 2 yr. old sell.

JEAN - Mat. sister to VALLEYSTREAM SILVER BEACON, she is EX 91 with 4-3 266 14295 5.5 793 RIP. Due late Aug. to Reliant.

HONEY - 2 yr. 365 14583 5.0 729 FRESH AGAIN AND STARTING STRONG.

FANCY SR. CALF AND YEARLING SHOW HEIFERS!

GLENNA - EX 92 Favorite Saint. 6-3 312 16011 4.9 785 Due Sept. to Yankee Chief.

LISABETH - VE 88 Golden Faithful. 6-3 365 20778 4.8 995

GLITTER - ONE FOR THE SHOWS - 1st Jr. Yr. 1987 All American & Louisville due late Aug. Her dam Valleystream Silver B Goldie VG 87 19934 5.1 1016.

NIKKI - EX 91 Beacon dtr. 4-0 362 17360 4.5 799 fresh again at 5-2 55d 4134 5.4 233 RIP HER SON by Yankee Chief sells and is eligible for JERSEY YOUNG SIRE PROGRAM.

For our friends in Lancaster County there will be free transportation to the sale, please contact Don Welk at STONEHURST FARMS for further information 717-687-7475

Bids May be Left With
Brenda Spence, JMS - 614-861-3636; John L. Morris - 301-371-4023; Dr. Lee Majeskie, Univ. of MD - 301-454-7847.

Planes will be met on request at Newark Airport or A.B.E. Airport in Allentown, PA.

HERON RUN FARM - MAX E. SPANN
Washington, N.J. 07882 201-537-6110

DAN VOSBURG, MANAGER 201-537-4100, 201-689-4022