

# THE OLD FARMER'S ALMANAC

JUNE 26-JULY 2, 1989  
July 1, Dominion Day in Canada.

June 26, 1284, the Pied Piper of Hamelin, Germany, lures 130 children into oblivion.  
June 28, 1902, the U.S. buys the uncompleted Panama Canal from France.  
Average length of days for the week 15 hours 15 minutes July 2, 1961, Ernest Hemingway, winner of both Nobel and Pulitzer prizes in literature, dies of a gunshot wound.  
*The face of the enemy frightens me only when I see how much it resembles mine.*



**Ask the Old Farmer:** I've heard of something called a "heater piece" in reference to land parcels. Do you know its meaning? T.J. Vt.  
A heater piece is a triangular piece of land, rather small, and thus compared to a box-iron or a piece of soapstone heated and used to warm the feet.

**Home Hint:** To clean parchment window shades use a wall-paper cleaner.

## OLD FARMER'S WEATHER FORECAST

**New England:** Showers, then clearing and hot, showers in the north. July starts hot with scattered showers. Average July temperature, 72.5° F.  
**Greater New York-New Jersey:** Clear with a brief heat wave ending a coolish June. July begins with showers, heavy in the south, and warmer temperatures.  
**Middle Atlantic Coastal:** Clear and warm to end the sixth month, thundershowers to begin the seventh. July edges in with seasonable warmth.  
**Piedmont & Southeast Coastal:** Rain is heavy in the east, June ends sunny, however, with seasonable warmth and showers in the west, more showers for July.

(All Rights Reserved, Yankee Publishing Incorporated, Dublin, NH 03444)

## Grantsville Livestock

Grantsville, Maryland  
Sat., June 17, 1989

HOGS: TOP BARROWS & GILTS 44.00-47.00; HEAVY BUTCHER 30.00-45.00; LIGHT BUTCHER 30.00-42.50; BUTCHER SOWS 28.00-35.00; FEEDER SHOATS 5.00-30.00.

VEAL: GOOD 90.00-115.00; STANDARD 75.00-85.00; UTILITY 50.00-65.00; BULL CALVES 100.00-150.00.

SHEEP & LAMBS: GOOD 55.00-63.50; UTILITY 48.00-52.00; SLAUGHTER EWES 18.00-30.00.

SLAUGHTER CATTLE: STEERS GOOD 68.00-70.00; STANDARD 60.00-65.00; UTILITY 55.00-58.00. HEIFERS GOOD 65.00-68.50; STANDARD 58.00-62.00; UTILITY 52.00-55.00.

COWS: COMMERCIAL 48.00-55.50; UTILITY 42.00-46.00; CANNER & CUTTER 35.00-40.00.

BULLS. COMMERCIAL & GOOD

54.00-61.10; CUTTER & UTILITY 48.00-52.00.

STOCK-FEEDER CATTLE: GOOD 68.00-78.00; MEDIUM 55.00-65.00.

STEER CALVES: GOOD 75.00-82.50; MEDIUM 60.00-70.00.

HEIFER CALVES: GOOD 65.00-80.00; MEDIUM 52.00-60.00.

EGGS: LARGE .52-.65; MEDIUM .48-.52.

## Belknap Livestock Auction

Dayton, Pa.

Wednesday, June 21, 1989

Report Supplied by PDA

CATTLE 61...PDA...Compared with last Wednesday's market: One Select slaughter steer 66.25, few Standard 58.00-64.00, few Utility 52.50-57.25. One Choice sl. heifer 66.00, one Select holstein 61.25, few Standard 58.50-59.75. Few Breaking Utility & Commercial sl. cows 47.75-50.00, one 52.00, Cutter & Bon. Utility 46.25-50.00, Canner & Low Cutter 38.00-46.25, Shells down to 30.00. One

Utility sl. bullock 50.25. Feeder Cattle: Few Medium Frame No. 1, 440/640 lbs. heifers 62.00-72.00.

CALVES 132...Standard and Good 90/120 lbs. vealers 86.00-100.00, 65/85 lbs. 70.00-88.00. Farm Calves: Holstein Bulls 90/125 lbs. 100.00-155.00, few Holstein heifers 100/115 lbs. 102.00-116.00. Beef cross 70/120 lbs. bulls & heifers 80.00-127.00, 150/260 lbs. 96.00-127.50; Holstein steers 150/285 lbs. 86.00-100.00, Hol. heifers 175/270 lbs. 80.00-85.00.

HOGS 179...Barrows and gilts \$3.50 higher. US No. 1-2 225/250 lbs. 47.50-48.00, 1-3 225/265 lbs. 46.50-47.50, small lot 50.00, 2-3 230/270 lbs. 44.85-46.50, lot 330 lbs. 38.50, 1-3 195 lbs. 41.25, lot 140 lbs. 45.00. US No. 1-3 250/545 lbs. sows 30.00-33.25. Boars 25.00-29.50, Light weights one stock 36.00.

FEEDER PIGS 34...Lot US No. 1-3 25 lbs. feeder pigs 14.00, Utility 15/30 lbs. 6.50-13.00 --- all per head.

SHEEP 36...Choice & Prime 75/90 lbs. spring slaughter lambs 58.00-62.50. Few Slaughter ewes 18.00-22.50.

GOATS 7...One Large Kid 36.00, few Medium & small Kids 16.00-30.00 --- all per head.

## Morrisons Cove Livestock

Martinsburg, Pa.

Monday, June 19, 1989

Report supplied by auction

CATTLE: 148 STEERS: H. CHOICE & PRIME 70.25-72.75; CHOICE 68.50-69.75; GOOD 63.50-67.25; STANDARD 52.50-58.75.

HEIFERS: CHOICE 66.50-69.75; GOOD 52.00-63.00.

COWS: UTILITY & COMMERCIAL 50.25-54.00; CUTTERS 47.50-49.25; CANNER & LOW CUTTER 42.00-48.00.

BULLOCKS: GOOD & CHOICE 60.50-65.75.

BULLS: YIELD GRADE NO. 1 58.75-64.00.

FEEDER CATTLE: STEERS GOOD 63.50-72.50; STANDARD 58.50-63.00; BULLS GOOD 60.00-68.50; STANDARD 54.00-60.00; HEIFERS GOOD 62.00-70.00; STANDARD 51.00-61.00. CALVES: 288. PRIME 107.00-120.00;

CHOICE 96.00-105.00; GOOD 88.50-94.00; STANDARD AND GOOD 78.00-86.50; 90-110 LBS. 82.50-102.00; 65-90 LBS. 76.00-93.50; HOLSTEIN BULLS 90-130 LBS. 122.00-161.50; HOLSTEIN HEIFERS 90-130 LBS. 92.00-118.50.

HOGS: 173. US#1-2 46.50-47.75; US #1-3 44.50-46.00.

SQWS: US#1-3 30.00-37.50. BOARS: 31.00-35.75.

FEEDER PIGS: 52. US#1-3 20-35 LBS. 21.50-28.50 PER HEAD; 1-3 35-50 LBS. 29.00-36.50 PER HEAD.

SHEEP: 44. SLAUGHTER LAMBS CHOICE 60.00-63.50; GOOD 58.00-60.00; SL. EWES 24.00-36.50.

GOATS: 28.00-62.00 PER HD. 4 LOADS OF HAY, 49.00-74.00.

## Valley Livestock

Athens, Pa.

Monday, June 19, 1989

Report supplied by auction

HOLSTEIN HFR. CALVES TO 135.00. VEAL CALVES 75.00-96.00.

VEALER BULL CALVES TO 125.00-175.00.

SLAUGHTER CALVES 75.00-93.00. GRASSERS & FEEDERS 45.00-70.00.

LAMBS, 60.00-72.00. SHEEP 15.00-32.00.

HOGS 200 TO 250 LBS. 40.00-44.50. SOWS 25.00-32.00.

BOARS 22.00-34.00. PIGS EACH 12.00-26.00.

HEIFERS, 48.00-51.75. SMALL STEERS TO 60.00.

FEEDER STEERS 50.00-72.00. BULLS 54.00-60.00.

COWS GOOD 47.00-53.00. COWS MEDIUM 44.00-47.00.

COWS POOR OR SMALL 35.00-44.00. CATTLE MARKET STEADY.

CALF MARKET STEADY. GOATS TO 85.00.

PONIES UP TO 100.00. HORSES EACH TO 500.00.

## Belleville Livestock

Auction

Belleville, Pa.

Wednesday, June 21, 1989

Report Supplied by PDA

CATTLE 94...REPORT IS SUPPLIED BY THE AUCTION...Utility slaughter steers 58.00-59.10. Breaking Utility and Commercial sl. cows 50.35-53.00, Cutter

and Boning Utility 49.00-51.50, Canner & low Cutter 43.00-47.85, Shells down to 36.00. Yield Grade No. 1, 1415/1590 lbs. sl. bulls 57.75-61.50, No. 2, 955/1150 lbs. 54.10-55.00. Feeder Cattle: Few Steers 49.50-90.00.

CALVES 106...Standard and Good vealers 80.00-85.00. Farm Calves: Holstein Bulls 95/115 lbs. 121.00-146.00, 85/95 lbs. 90.00-120.00.

HOGS 103...US No. 1-2 215/255 lbs. barrows and gilts 49.75-51.00, 1-3 200/280 lbs. 48.25-49.25. US No. 1-3 sows 30.00-35.00. Boars 23.00-29.00.

FEEDER PIGS 182...US No. 1-3 feeder pigs 15.50-30.50 --- all per head.

SHEEP 36...Good spring slaughter lambs 57.00-65.00. Slaughter ewes 12.00-30.00.

GOATS 17...21.00-67.00 --- all per head. HOLSTEIN DAIRY COWS - \$600.00-\$1300.00 - PER HEAD.

## Shenandoah Valley Livestock

Harrisonburg, Va.

June 17, 1989

Report supplied by auction

STEERS: M&L-1 300-500 LBS. 87.00-92.00; 500-700 LBS. 74.00-91.00.

FEEDER BULLS: 300-500 LBS. 82.00-90.00; 500-700 LBS. 65.50-79.00; 700-800 LBS. 67.00-75.00.

HEIFERS: M&L-1 300-500 LBS. 72.00-85.00; 500-700 LBS. 70.50-84.50.

STOCK COWS: BEEF, PAIRS 500.00-810.00, SPRINGERS 500.00-625.00.

SLAUGHTER COWS: UTILITY AND COMMERCIAL 2-4 43.00-51.75, 1 AT 53.75; CANNER AND CUTTER 1-3 39.00-47.25; SLAUGHTER BULLS 1&2 53.75-64.00.

LAMBS: BLUE O HIGH CHOICE AND PRIME 65.00; RED O CHOICE 57.00; FEEDER LAMBS CHOICE 53.00-57.50; SLAUGHTER EWES 15.00-16.00.

HOGS: SOWS 1-3 23.75-30.75; BOARS 23.00.

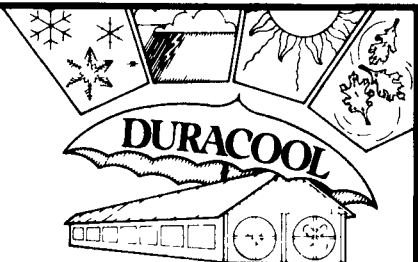
## Peoria Cattle

Peoria, Illinois

Thursday, June 22, 1989

FEDERAL-STATE OPENING, MID-SESSION AND CLOSE CATTLE: 50 NOT ENOUGH OFFERED FOR A

Protect your Poultry all year round with DURACOOOL



DURACOOOL's white elastomeric roof coating system is designed to solve roofing problems including heat buildup, rust and general deterioration and water leakage

- 1 DURACOOOL keeps out heat. Interior house temperatures are reduced by 4 to 12 degrees meaning cooler birds, less mortality, better feed conversion and potential energy savings
- 2 DURACOOOL coating extends life of current roof by many years. Containing a strong rust inhibitor, DURACOOOL may be applied directly over a rusty surface and has a design life of 12-15 years
- 3 DURACOOOL seals the roof of any minor pre-existing leaks. Nails stay tight
- 4 DURACOOOL is sold by the square foot, installed, and with a five year warranty by authorized distributor/applicators

DURACOOOL gives you a new roof with a cooler inside temperature at a fraction of the cost of new metal! References furnished upon request

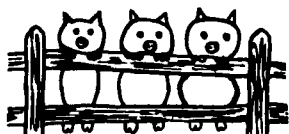
## ALINE SUPPLY

RD #2 Box 289, Rt. 35, Mt. Pleasant Mills, PA 17853  
(717) 539-2500  
IN PA 1-800-237-1330

## SOYBEAN ROASTING ON YOUR FARM

Don't Waste It - Roast It!

This Little Piggy Went To Market,  
This Little Piggy Stayed Home,  
This Little Piggy Had...  
ROASTED SOYBEANS



Make Higher Profits From All Grains.  
Roasting Improves TDN, Destroys Mold,  
Retards Toxins & Removes Moisture.

CUSTOM GRAIN ROASTING  
DONE IN PA. &  
SURROUNDING STATES

DALE L. SCHNUPP  
RD 6, Lebanon, Pa. 17042  
PH: 717-865-6611

DAVID N. GROFF  
RD 1 Box 506C  
Lewisburg, Pa. 17837  
717-966-3593

ALLEN SUMMERS  
703 E. Christine Rd.  
Nottingham, Pa. 19362  
215-932-4761



## MARKET YOUR FORMULA FED

CALVES WITH AREA PACKER  
Our valued growers weigh their own calves.

Domenic Venuto, Inc.  
622 Federal Street  
Philadelphia, PA 19147  
215-339-9921  
or 215-467-9614  
or 215-389-VEAL

## ATTENTION FARMERS

The New Way To Market Your Livestock  
HATFIELD PACKING CO. AND MOYER PACKING CO.  
Will Receive Hogs Will Receive Cattle

At The

BLAIR-BEDFORD BUYING STATION  
RD 1 Martinsburg, Pa.

MONDAYS - Hogs 7:30 AM to 12 Noon  
Cattle & Calves 7:30 AM to 4 PM

THURSDAYS - Cattle & Calves  
7:30 AM to 4 PM

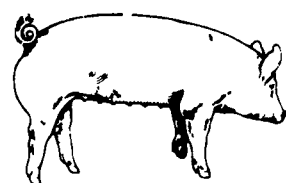
- No commission or yardage fees deducted from check
- Livestock weighed and paid for immediately
- You may call our office sale day for prices

DALE R. HOOVER - Owner  
Business 814-793-3077  
Residence 814-793-2657

CRIPPLED AND DISABLED COWS, STEERS & BULLS  
Slaughter Under USDA Inspection

FREE CALL  
1-800-234-COWS (2697)  
215-286-9400  
Wayne Taylor

Lebanon, Berks, Lancaster & Chester Counties



EMERY'S BUYING STATION

OPEN TO RECEIVE YOUR MARKET HOGS

AT THE GREEN DRAGON MARKET  
RD 4, EPHRATA, PA 17522  
1 MILE NORTH OF EPHRATA ON NORTH STATE STREET.

HOURS: MONDAY, TUESDAY, and WEDNESDAY 7:00 A.M. to 11:30 A.M.

215-458-5677 Residence  
717-733-9648 Office

YOU ARE PAID FOR YOUR HOGS IMMEDIATELY

Ken & Lois Emery, Proprietors