

Dewart Livestock Auction

Dewart, Pa.

Monday, June 19, 1989

Report Supplied by PDA

CATTLE 104...PDA...Compared with last Monday's market: Slaughter cows about steady. Few Choice slaughter steers 65.00-69.00, few Select 60.50-63.75. One Select sl. heifer 65.50. Breaking Utility & Commercial sl. cows 45.75-48.75, Cutter & Bon. Utility 46.50-49.75, couple 51.85, Canner & Low Cutter 42.75-46.00, Shells down to 39.00. Few Yield Grade No. 1, 1050/1685 lbs. sl. bulls 58.00-63.75.

CALVES 161...One Choice vealers 111.00, few Standard & Good 75/100 lbs. 80.00-91.00, few Utility 60/85 lbs. 70.00-75.00. Farm Calves: Holstein Bulls, No. 1-2, 85/135 lbs. 110.00-165.00; Hol. Heifers 100/120 lbs. 90.00-131.00.

HOGS 38...Few Lots US 1-3 235/250 lbs. barrows and gilts 46.00-46.90. US No. 1-3 360/640 lbs. sows 29.00-33.75. Couple Boars 30.00&30.25.

FEEDER PIGS 100...US No. 1-2 20/35 lbs. feeder pigs 16.00-21.00, 25/50 lbs. 20.00-29, 50/60 lbs. 27.00-32.00 --- all per head.

SHEEP 9...Few Choice 85/105 lbs. spring slaughter lambs 54.00-58.00.
GOATS 0...No Market Test.

Wilmington Livestock Auction

N. Wilmington, Pa.

Monday, June 19, 1989

Report Supplied by PDA

CATTLE 241...PDA...Compared with last Monday's market: Slaughter cows about steady. Few Choice slaughter steers 70.00-74.00, Select & low Choice holsteins 63.00-67.75, few Select 66.50-69.50, Standard 58.00-64.50. Few Choice sl. heifers 67.50-72.50, few Select 62.00-65.00; few Select & Choice holsteins 61.75-66, few Standard 57.50-60.00. Breaking Utility & Commercial sl. cows 47.00-53, one 56.50, low yielding down to 43.25, Cutter & Boning Utility 47.00-51.50, Canner & Low Cutter 39.00-47.50. Few Yield Grade No. 1, 1105/1720 lbs. sl. bulls 57.50-60.00. Feeder Cattle: Few Medium Frame No. 1, 335/640 lbs. steers 76.00-87.00. Med. & Large Frame No. 1, 435/690 lbs. bulls 64.00-77.00.

CALVES 307...Couple Choice vealers 117.50-122.50, Standard & Good 90/120 lbs. 85.00-92.00, 65/85 lbs. 70.00-88.00, lot Utility 57 lbs. 75.00. Farm Calves: Hol. Bulls 95/145 lbs. 130.00-180, No. 2, 97.00-145.00, 85/90 lbs. 90.00-100.00, Hol. Heifers 90/120 lbs. 89.00-147.50. Beef cross 70/130 lbs. bulls & heifers 93.00-130.00.

HOGS 400...Barrows and gilts mostly .50 to .75 higher. US No. 1-2 220/250 lbs. 47.00-47.75, 1-3 215/260 lbs. 46.25-47.25, 2-3 250/280 lbs. 43.00-45.75, 1-3 195/205 lbs. 38.25-42.50. Sows steady. US No. 1-3 330/645 lbs. sows 32.00-37.00, 2-3 315/695 lbs. 28.00-32.00. Boars 28.00-33.00.

FEEDER PIGS 35...US No. 1-3 15/30 lbs. feeder pigs 13.00-16.00, 30/45 lbs. 16.00-20.00 --- per head.

SHEEP 144...High Choice & Prime 80/100 lbs. spring sl. lambs 70.00-78.00, Choice 65/105 lbs. 58.00-69.00; Good and Choice 50/80 lbs. 50.00-63.00. Slaughter ewes 13.00-30.00.

GOATS 10...Few Large 53.00-67.50, few Medium 26.00-43.00 --- all per head.

Eighty-Four Livestock Auction

Eighty-Four, Pa.

Monday, June 19, 1989

Report Supplied by PDA ?31> EIGHTY-FOUR LIVESTOCK AUCTION PA. CATTLE

235...PDA...Compared with last Monday's market: Slaughter cows .50 to \$1 higher. Choice slaughter steers 71.50-74.50, Select 66.00-69.50, Standard 60.00-66.00, few Utility 54.00-58.00. Choice sl. heifers 69.50-72.50, Standard 57.00-61.50, few Utility 49.00-56.00. Breaking Utility & Commercial sl. cows 49.00-53.50, high yielding up to 55.00, Cutter & Bon. Utility 47.00-52.00, Canner & low Cutter 41.70-47.00, Shells down to 32.00. Few Select sl. bullocks 58.00-62.00. Yield Grade No. 1, 1000/1900 lbs. sl. bulls 57.00-71.00. Feeder Cattle: Few Medium Frame No. 1, 400/500 lbs. steers 80.00-89.00. Medium Frame No. 1, 400/600 lbs. heifers 70.00-74.00, 650/800 lbs. 58.00-64.00. Medium Frame No. 1, 600/900 lbs. bulls 60.00-70.00, few 75.00.

CALVES 262...Choice vealers 100.00-118.00, Good 90.00-97.00, Standard & Good 90/120 lbs. 85.00-96.00,

60/85 lbs. 73.00-85.00, few Utility 50/70 lbs. 45.00-65.00. Farm Calves: Holstein bulls 90/125 lbs. 100.00-162.00; Hol. heifers 90/120 lbs. 96.00-120.00. Beef cross 85/115 lbs. bulls & heifers 100.00-140.00.

HOGS 203...Barrows and gilts \$1 to \$1.50 higher. Lot US No. 1-3 239 lbs. 48.00, 1-3 215/260 lbs. 46.00-47.00, 2-3 210/260 lbs. 45.00-46.10, lot 2-4 270 lbs. 41.00, 1-3 120/140 lbs. 46.00-48.00, 180/195 lbs. 40.00-42.00. US No. 1-3 300/600 lbs. sows 37.00-40.00. Boars 30.00-35.00.

FEEDER PIGS 28...US No. 1-3 40/45 lbs. feeder pigs 22.00-31.00, 2-3 30/40 lbs. 9.00-18.00 --- per head.

SHEEP 171...Spring slaughter lambs \$2 to \$3 higher. High Choice & Prime 80/100 lbs. 70.00-74.00, Choice 65/90 lbs. 66.00-71.00. Good & Choice 45/70 lbs. feeder lambs 53.00-63.00. Slaughter sheep 10.00-22.50.

GOATS 9...Few Large 45.00-50.00, few Medium 35.00-40.00 --- all per head.

Mercer Livestock Auction

Mercer, Pa.

Tuesday, June 20, 1989

Report Supplied by PDA

NOT REPORTED JUNE 20, 1989.

New Holland Horses

New Holland Sales Stables
New Holland, PA

Monday, June 19, 1989

REPORT SUPPLIED BY AUCTION REGISTERED RECEIPTS OF 256 HEAD OF HORSES, MULES AND PONIES. MARKET STRONGER.

DRIVING HORSES 410.00-690.00. RIDING HORSES 385.00-730.00. REGISTERED HORSES 750.00-1000.00. HEAVYWEIGHT KILLERS 450.00-650.00.

LIGHTWEIGHT KILLERS 270.00-400.00.

MARE PONIES 35.00-100.00.

COLTS 25.00-45.00.

GELDING PONIES 35.00-100.00.

LARGER PONIES 150.00-250.00.

Peoria Sheep

Peoria, Illinois

Tuesday, June 20, 1989

FEDERAL-STATE OPENING, MID-SESSION AND CLOSE SHEEP: 150 TRADING MODERATE. COMPARED WITH LAST TUESDAY SLAUGHTER LAMBS AND SLAUGHTER EWES STEADY SLAUGHTER LAMBS: CHOICE AND PRIME 90-120 LBS. 62.00-64.00, SOME 65.00.

SLAUGHTER EWES: UTILITY AND CULL 10.00-15.00.

C.B. HOOBER & SON, INC.
Intercourse, PA
(717) 768-8231

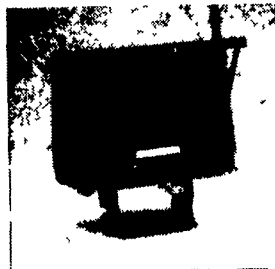


TWO LOCATIONS

The Saving Place

HOOBER EQUIPMENT, INC.
Middletown, DE
(302) 378-9555

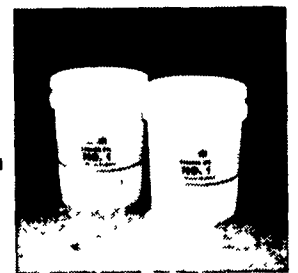
FENDER MOUNT AM/FM/CASSETTE STEREO



Enjoy the crisp, clear sound of stereo while you work. Shock resistant and waterproof housing.
ZVX300TRA. Limit 1



CASE IH NO. 1 OIL FOR DIESEL ENGINES



Special additives help protect your engine from corrosion 407356R3. Limit 4

SPECIAL PRICE

124⁹⁹

LESS REBATE

25⁰⁰

NET COST AFTER REBATE

99⁹⁹

SPECIAL PRICES

22⁹⁵

LESS REBATES

4⁰⁰

NET COST AFTER REBATE

18⁹⁵

WE SHIP PARTS DAILY

Via UPS - PPSH - BUS - AIR FREIGHT, ETC.

HOURS

Mon.-Fri. 7 AM-5 PM, Sat. 7 AM-Noon

CALL US...
It Could Be We Have It



Authorized UPS Station

YOU STAY PUT



Pick Up Your Phone And Place Your Parts Order With Us

POURED REINFORCED CONCRETE CONSTRUCTION

MANURE STORAGE STRUCTURES - DEPEND ON US FOR TOP QUALITY

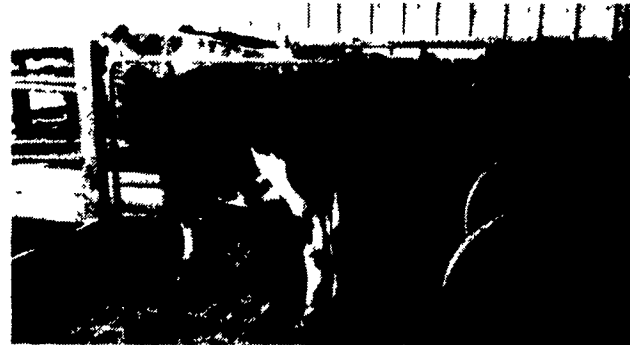
- Steel In Circular Manure Pits Grade 60



ABOVE-GROUND CONCRETE MANURE TANK

We Will Build A Manure Storage Tank To Fit Your Needs!

Waffle Cattle Slats



Ideal For Heifer, Cattle And Freestall Barns. Absolute Comfort For All Animal Sizes.

SIZES AND LAYOUTS TO YOUR SPECIFICATIONS

Groffdale concrete walls, inc.
148 BRICK CHURCH RD., LEOLA, PA 17540

(717) 656-2016

ZIMMERMAN MFG. CORP.
125 King Court and Hollander Road
New Holland, PA 17557
717/354-9611

HIGH-VOLUME PORTABLE COOLING FAN

Excellent for cooling dairy barns, livestock buildings, garages, warehouses, plants or for emergency ventilation.

Large, slow turning (400 rpm), 6-wing propeller fan is matched to a deep venturi frame for high volume air movement and smooth, quiet operation.

Special high efficiency motor can be plugged into most ordinary 115 Volt outlets or can be converted to 230 Volts.

Cabinet of painted galvanized steel is easily moved about on 10" wheels.



SPECIFICATIONS:

- Model #CF48-1 48" Portable Fan
- 20,500 CFM Air Movement
- 1 HP Ball Bearing Motor With Overload Protection, Uses 9.2 Amps, 115 Volts

COMPARE THIS WITH OTHER 1 HP MOTORS WHICH USE 15 AMPS OR EVEN MORE!

Zimmerman 9.8 Amps, 30 Days Use = \$ 76.20
Brand X 15.0 Amps, 30 Days Use = \$124.20
SAVINGS - \$48 per Month Based On 10 Cents Per KWH

Also Available In 36" Models With 1/2 HP Motor And 13,200 CFM

CALL FOR PRICES OR NAME OF DEALER IN YOUR AREA