

National Grain Market

St. Joseph, MO
June 14, 1989

GRAIN PRICES SHARPLY HIGHER FOR 2ND CONSECUTIVE DAY. FUTURES ON SOME COMMODITIES UP NEAR DAILY LIMIT AS TRADERS THOUGHT OVER-SOLD POSITIONS EXISTED. RAIN DELAYED HARVESTING AND FARMER SELLING OF WHEAT AND SOYBEAN PLANTING NOT COMPLETED IN SOME WET AREAS. BRAZILIAN EXPORT OF SOYBEANS TIED UP DUE TO FINANCIAL CRISIS IN THAT COUNTRY. SECOND WEEK OF GOOD EXPORT ORDERS OF WHEAT AND CORN A FACTOR. LAST YEAR'S DROUGHT NOT FORGOTTEN AND SOME FORECAST THAT LARGE AREA COULD BE HIT AGAIN THIS YEAR AS SEVERAL PLACES CONTINUE TO SUFFER AND VERY SHALLOW TOP SOIL-MOISTURE MANY OTHER PLACES.

EXPORT NEWS: CHINA BOUGHT 100,000 TONNES OF SOFT RED WINTER WHEAT FOR 89/90 MARKETING YEAR.
DATE CHANGE YEAR AGO 06/14/89 06/13/89 06/15/88 WHEAT: KANSAS

CITY 4.37-4.40 UP 4 3.93-3.97 MINNEAPOLIS 4.49 3/4-4.54 3/4 UP 5 3/4-10 3/4 4.45 PORTLAND 4.45-4.51 UP 1 3.87-3.92 ST. LOUIS 3.87-3.90 UP 9 3.51-3.60

CORN, U.S. NO. 2 YELLOW: KANSAS CITY 2.51-2.56 UP 4.2.66-2.70 MINNEAPOLIS 2.53 3/4 UP 2 1/4 2.53 1/2 SO. IOWA 2.57-2.60 UP 3-4 2.53-2.66 OMAHA 2.45-2.48 UP 4-6 2.56
SOYBEANS, NO. 1 YELLOW: KANSAS CITY 7.25-7.30 UP 11 8.86-8.92 MINNEAPOLIS 7.22 1/2 UP 28 1/2 8.80 SO. IOWA 7.25-7.31 UP 29-28 8.72-8.89 C. ILL. PROCESSORS 7.26-7.32 1/2 UP 21 1/2-19 1/2 8.89-9.08

KANSAS CITY, US NO. 1 HARD RED WINTER WHEAT, ORDINARY PROTEIN. MINNEAPOLIS, US NO. 1 DARK NORTHERN SPRING WHEAT, 14% PROTEIN. PORTLAND, NO. 2 SOFT WHITE WHEAT, ST. LOUIS, NO. 2 SOFT RED WINTER WHEAT.

FUTURES CLOSE: KANSAS CITY (JULY) WHEAT 4.21 1/2 UP 3 1/2 3.97 3/4 MINNEAPOLIS (JULY) WHEAT 4.11 3/4 UP 5 3/4 4.30 CHICAGO (JULY) WHEAT 3.98 3/4 UP 6 1/2 3.94 (JULY) CORN 2.56 3/4 UP 4 1/4 2.79 1/2 (JULY) SOYBEANS 7.29 1/2 UP 28 1/2 9.20 (NOV) SOYBEANS 6.45 1/4 UP 17 1/4 EXPORT: BARGE OR RAIL, PORT

OF NEW ORLEANS OR NORTH TEXAS GULF. NO. 1 HARD RED WINTER WHEAT ORDINARY PROTEIN 4.67-4.70 UP 4-6 4.25 NO. 2 SOFT RED WINTER WHEAT 4.14-4.19 UP 7-9 3.94-3.98 NO.2 YELLOW CORN 2.85-2.86 UP 3 2.99-3.02 NO.2 YELLOW SORGHUM RAIL 4.69 DN 2 BARGE 4.73 UP 9 4.96-5.09 NO.2 YELLOW SOYBEANS 7.60-7.62 UP 31-32 9.24-9.28.

Belleville Hay

Wednesday, June 14
Belleville, PA

Report Supplied by Auction
TOTAL LOADS: 20 LDS. HAY.
ALFALFA: 127.50-162.50.
MIXED HAY: 45.00-75.00.
STRAW: 7 LOADS, 47.50-70.00.
EAR CORN: 3 LOADS, 110.00-117.50.

Dewart Hay

Dewart, PA.
Monday, June 12, 1989

Report Supplied by Auction
TOTAL LOADS: 5 LDS. HAY,
41.00-76.00.
STRAW: 51.00-69.00.
CORN: 80.00-99.00.
OATS: 1.60 BU.

King's Hay

Kirkwood, Pa.
Tuesday, June 13, 1989

Report Supplied by Auction
TOTAL LOADS: 27.
ALFALFA: 111.00-118.00.
ALFALFA MIX: 92.00-105.00.
ALFALFA AND ALFALFA MIXED,
NEW CUTTING: 63.00-85.00.
MULCH: 29.00.
MIXED HAY, NEW CUTTING:
58.00-85.00.
RYE STRAW, NEW: 40.00-65.00.
STRAW: 60.00-84.00.
GRASS: 101.00.
EAR CORN: 105.00-112.00.
OATS: 2.35 BU.

Chester County Hay

Coatesville, PA
Wed., June 14

Report Supplied by Auction
TOTAL LOADS: 9.
ALFALFA: 140.00.
STRAW: 80.00.
TIMOTHY: 110.00-120.00.
TIMOTHY MULCH: 70.00.; NEW,
60.00.

Green Dragon Hay

Ephrata, Pa.
Friday, June 9, 1989

Report Supplied by Auction
TOTAL LOADS: 98.
MIXED HAY: 50.00-115.00.
ALFALFA: 59.00-155.00.
TIMOTHY: 61.00-131.00.
GRASS HAY: 1 LOAD, 62.00.
STRAW: 41.00-85.00.
EAR CORN: 107.00-122.00.
OATS: 2.80 BU.

New Holland Hay

New Holland, Pa.
Monday, June 12, 1989

Report Supplied by Auction
TOTAL LOADS: 93.
ALFALFA: 58.00-137.00, 1 AT 167.00 AND 1 AT 177.00.
MIXED HAY: 57.00-110.00, 1 AT 137.00.
TIMOTHY: 87.00-125.00, 1 AT 160.00.
CLOVER: 85.00.
STRAW: 49.00-102.00, 1 AT 160.00.
EAR CORN: 74.00-119.00.
OATS: 2.55 AND 1.25 BU.

Good's Hay

Leola, Pa.
Wed., June 14, 1989

Report Supplied by Auction
TOTAL LOADS: 82.
ALFALFA: 72.00-126.00; NEW
45.00-84.00.
TIMOTHY: 91.00-113.00.
MIXED HAY: 64.00-121.00; NEW AT
86.00-101.00.
STRAW: 40.00-82.00.
GRASS: NEW AT 80.00.
CORN: 98.00-124.00.
OATS: 2.70-3.00 BU,
CLOVER: 88.00.

Westminster Hay

Westminster, Md.
Tuesday, June 13, 1989

Report Supplied by Auction
TOTAL LOADS: 7.
ALFALFA: DARK, .25-40 BALE.
MIXED HAY: .80-1.00 BALE.
STRAW: 1.30 BALE.

Heritage Computer Solutions

Division of Heritage PMS Inc.

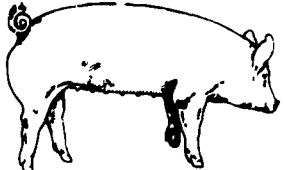
Pacesetters in Agri-Business
Computer Technology

458-B Valley Glen Rd.,
R.D. 3, Annville, PA 17003

Layer Performance 2.0

- the layer management computer program

- ★ Track Flock Performance, Finances & Egg Gradeout
 - ★ Compare your flock data with strain potentials
 - ★ Easy to read reports, summaries & graphs.
- Call (717) 838-1685 or (717) 397-1998 for more information



EMERY'S BUYING STATION

We Will Be Closed
June 19, 20 & 21
For Vacation

OPEN TO RECEIVE
YOUR MARKET HOGS

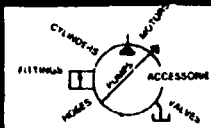
AT THE GREEN DRAGON MARKET
RD 4, EPHRATA, PA 17522
1 MILE NORTH OF EPHRATA
ON NORTH STATE STREET.

HOURS: MONDAY, TUESDAY, and
WEDNESDAY 7:00 A.M. to 11:30 A.M.

215-458-5677 Residence
717-733-9648 Office

YOU ARE PAID FOR YOUR
HOGS IMMEDIATELY

Ken & Lois Emery, Proprietors

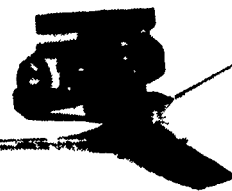


BEILER HYDRAULICS

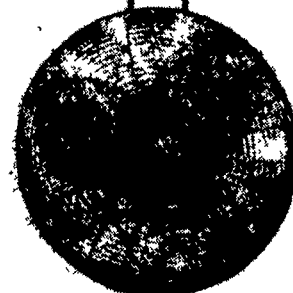


252 N. Shirk Rd., New Holland, PA 17557 (717) 354-6066
WHOLESALE • RETAIL SALES • SERVICE • INSTALLATIONS

VENTILATION SPECIALS

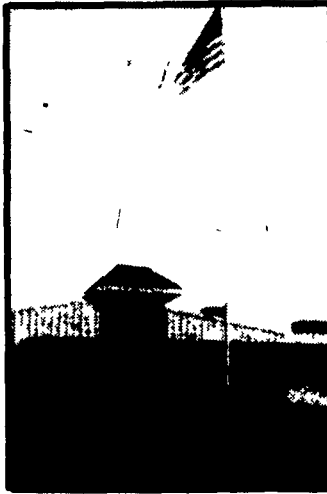


56" CEILING FANS
SPECIAL THRU
JUNE 17
\$95.00
Less Motor



24" CIRCULATING FANS
w/Hyd. Motor
SPECIAL THRU JUNE 30
\$195.00

LOCAL DEKALB HATCHERY TEAM

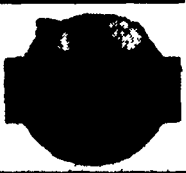


Four nearby locations capable of large volumes to fill your orders in 1 to 2 consecutive days utilizing professional people and state of the art equipment. This provides you with fast, efficient service that results in a top quality chick.

The only full service company, in this area, to handle the total needs of poultrymen.

For More Information Phone:
717-653-1102

Monday - Friday 8:30 AM - 4:00 PM



Be Wise
Check our
prices before
you buy!!

SPRAY MATERIALS

- * BULLET
- * ATRAZINE
- * DUAL
- * BICEP
- * LASSO MT.
- * SUTAZINE
- * ROUND UP
- * BLADEX
- * BANVEL
- * LOROX
- * GRAMOXONE
- * PRINCEP
- * EXTRAZINE
- * FURADAN
- * COUNTER
- * LORSBAN
- * DYFONATE
- * ETC.

SAVE ON BULK HERBICIDES

- * BULLET
- * LASSO MT
- * ETRAZINE
- * BLADEX
- * DUAL
- * BICEP
- * PROWL

MELVIN R. WEAVER

2213 Leabrook Road, Lancaster, PA 17601
Ph: 717-569-6576 or 898-8354